



# United Steel Products, Inc.

33-40 127<sup>th</sup> Place, Flushing NY 11368 - (718)478-5330 - Fax: (718)779-3202  
www.unitedsteelproducts.com

## ARTIC-T-1150 – THERMAL INSULATED STEEL SECTIONAL DOOR



### PRODUCT FEATURES

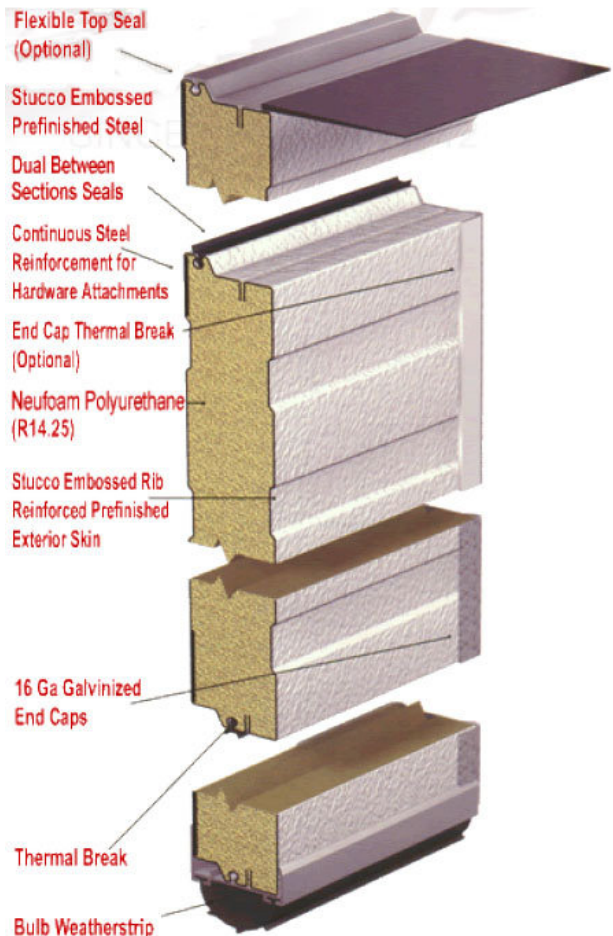
- Panel thickness – 1 ½”
- Exterior steel – .016
- Exterior surface – textured, ribbed
- Torsion springs – 10,000 cycles
- Standard width – 20’-0” wide
- Standard height – 18’-0” high
- Exterior color – white
- Interior color – white
- 2” galvanized steel track

### PRODUCT HI-LITES

- Heavy duty foam injected polyurethane insulation
- Thermal break
- Ship-lap joint
- Stucco embossed texture, ribbed reinforced design
- Baked enamel finish
- R-value 14.25, U-value 0.07

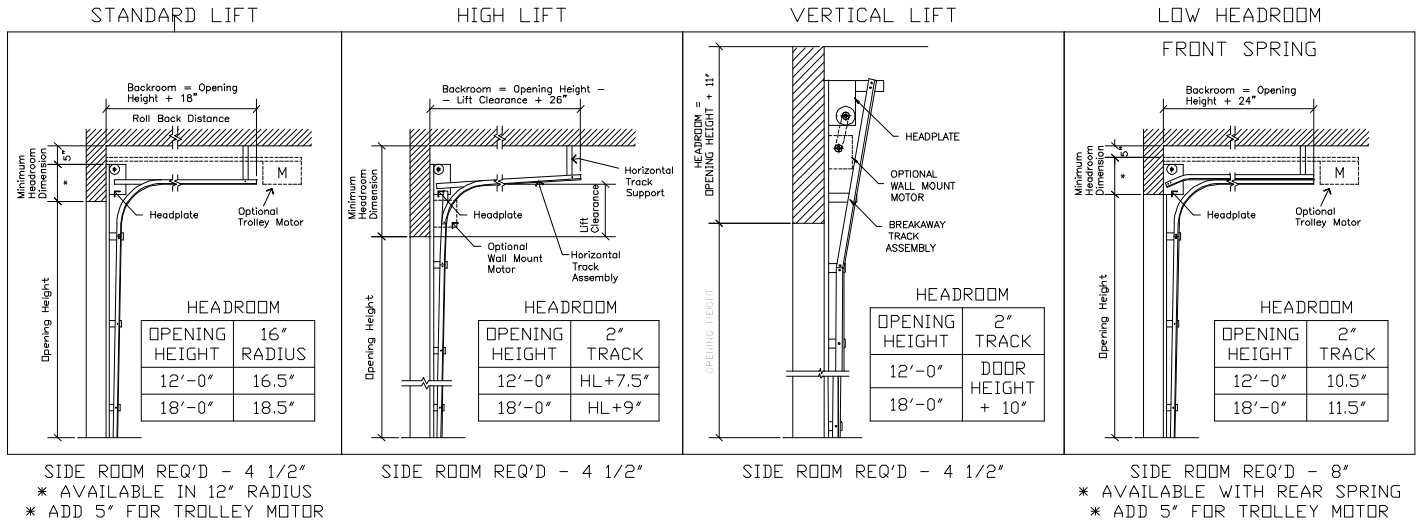
### OPTIONS

- Brown exterior color
- Vision lites
- Full view glass sections
- Pass door
- Exhaust port
- High cycle springs



# ARTIC-T-1150 – THERMAL INSULATED STEEL SECTIONAL DOOR

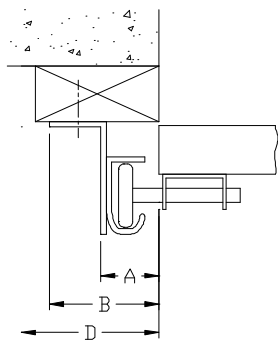
## TRACK ELEVATION OPTIONS



## TRACK JAMB MOUNTS

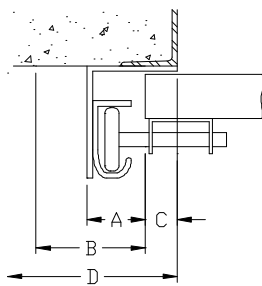
NOTE: Consult factory for 3" track clearances

### WOOD JAMBS



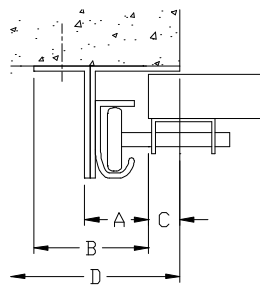
2" TRACK		
A	B	D
1.5"	3.5"	5"

### STEEL JAMBS



2" TRACK			
A	B	C	D
1.5"	3.5"	1"	5"

### MASON JAMBS



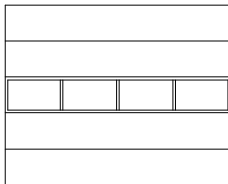
2" TRACK			
A	B	C	D
1.5"	3.5"	1"	5"

DOOR OPENING WIDTH	NUMBER OF WINDOWS
8'-0" - 9'-0"	2
9'-1" - 12'-2"	3
12'-3" - 16'-2"	4
16'-3" - 19'-2"	5
19'-3" - 24'-2"	6
24'-3" - 25'-2"	7

DOOR HEIGHT	SECTIONS HIGH
7'-1" - 8'-1"	4
8'-2" - 10'-1"	5
10'-2" - 12'-1"	6
12'-2" - 14'-1"	7
14'-2" - 16'-1"	8
16'-2" - 18'-1"	9

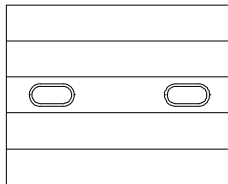
## WINDOW LITES

### FULL VISION



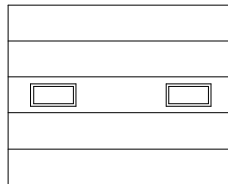
FULL VISION GLAZING SECTION WITH GLASS FINISH WHITE OR ALUMINUM AVAILABLE IN 1/8" D/S GLASS, 1/4" GLASS, 1/2" INSULATED GLASS

### TYPE AA



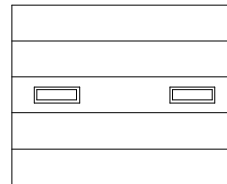
610x305MM (24"x12") DUAL ACRYLIC THERMAL SET IN MOULDED GASKET

### TYPE E



610x305MM (24"x12") CLEAR FLOAT GLASS SEALED UNIT SET IN MOULDED FRAME

### TYPE CPL



610x203MM (24"x8") CLEAR FLOAT GLASS SEALED UNIT SET IN MOULDED FRAME

## AVAILABLE OPTIONS

- Trolley motor – standard lift, low headroom
- Jackshaft motor – vertical lift, high lift
- Chain hoist – vertical lift, high lift

# USP

**UNITED STEEL PRODUCTS, INC.**  
33-40 127<sup>th</sup> Place, Flushing NY 11368  
(718)478-5330 - Fax: (718)779-3202

Distributed by:

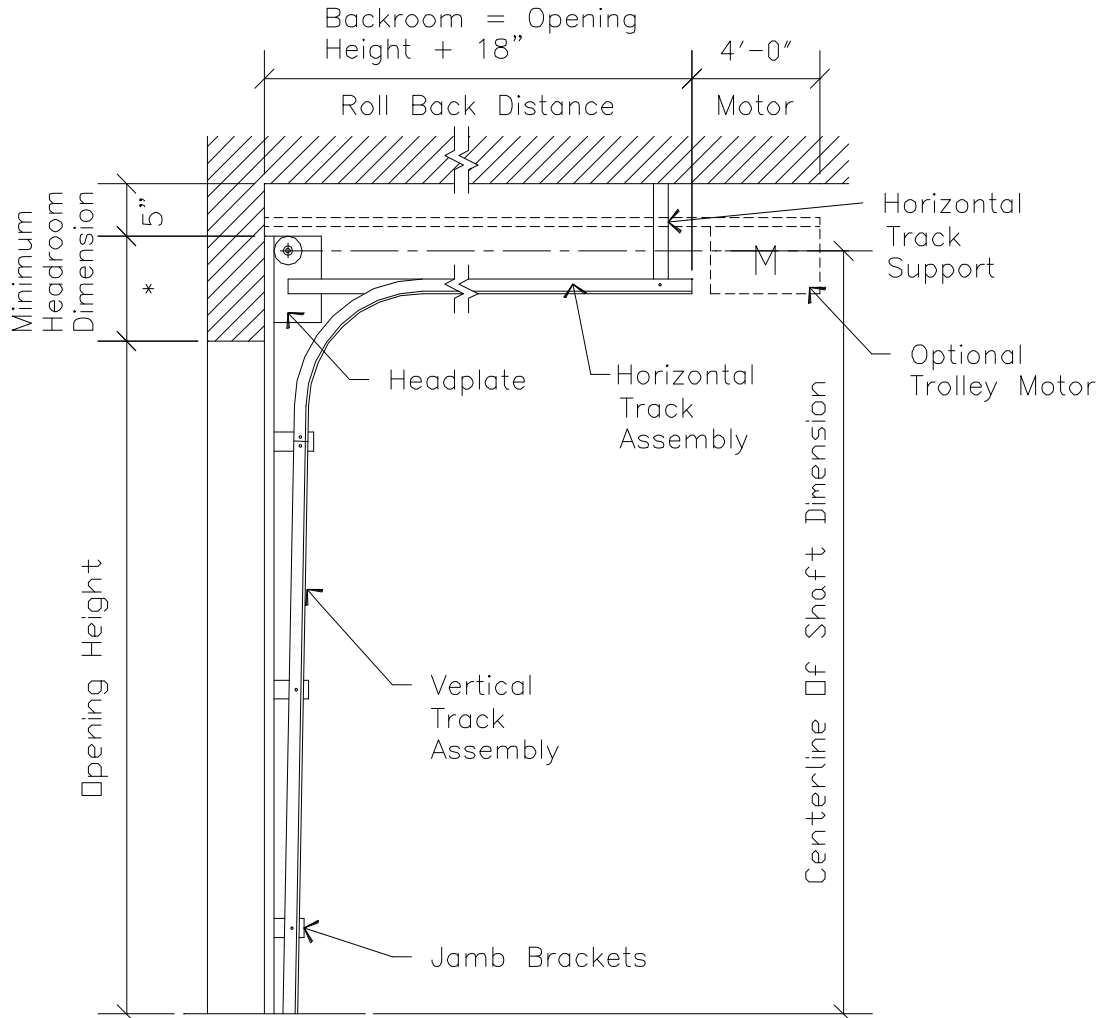


# United Steel Products, Inc.

33-40 127<sup>th</sup> Place, Flushing NY 11368 - (718)478-5330 - Fax: (718)7793202  
www.unitedsteelproducts.com

## SECTIONAL DOORS

### Standard Lift Track



#### **Headroom Clearance Dimensions**

Opening Height	Cable Drum	12" Radius	16" Radius	3" Track
12'-0"	D400-144	13"	16.5"	18"
18'-0"	D525-216	14.5"	18.5"	19"
26'-0" / Consult Factory	D800-312	16.5"	19.5"	21"

#### **Operation:**

- Manual lift \*
- Trolley motor operator (add 5" headroom)

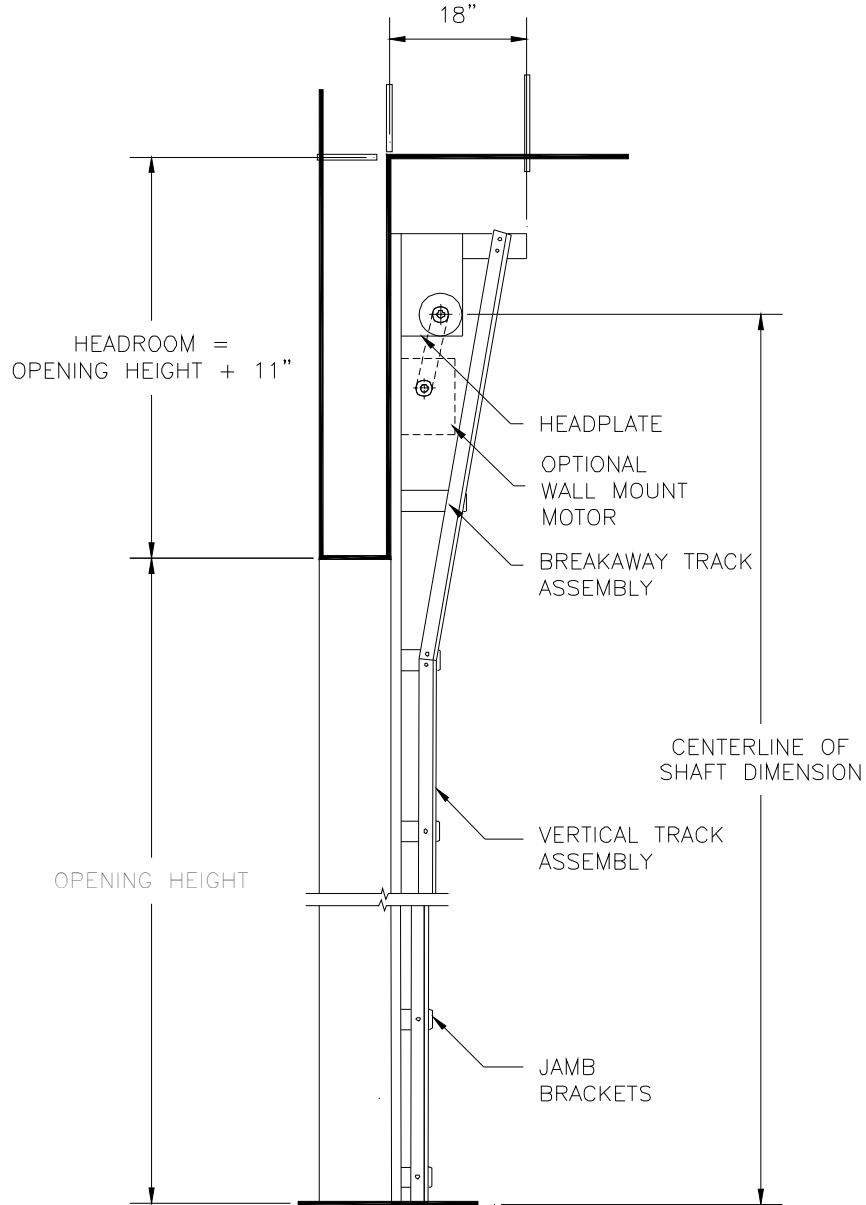
#### **Side Room Req'd**

2" Track	3" Track
4.5"	6.5"



**SECTIONAL DOORS**

Full Vertical Track (Low Headroom)



**Headroom Clearance Dimensions**

Door Height	Cable Drum	2" Track	3" Track
12'-0"	D400-144	Door height + 10"	Door height + 10"
16'-0"	D525-216		
26'-0"	D800-312		

**Operation:**

- Manual lift
  - Chain hoist (add 6" side room) \*
  - Jackshaft motor operator (add 18" side room) \*
- \* - solid shaft req'd

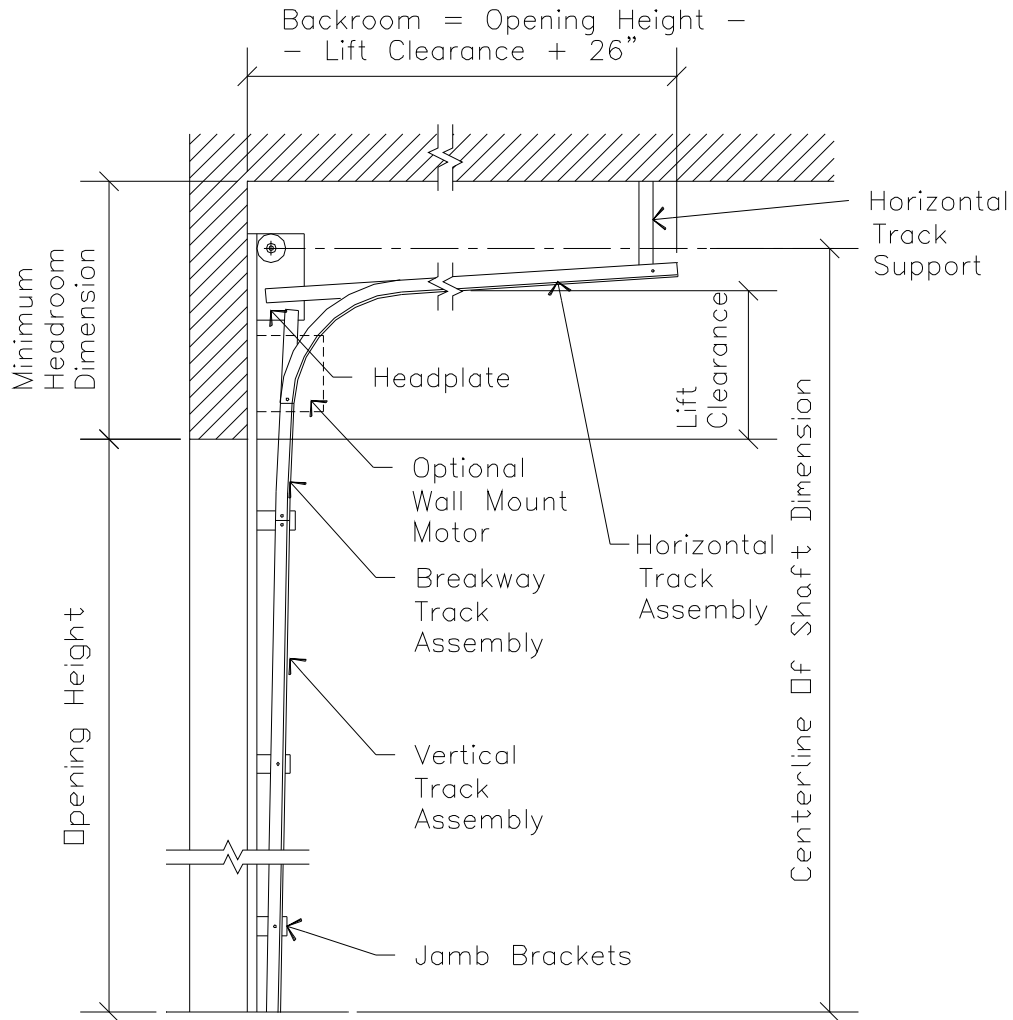
**Side Room Req'd (Manual)**

2" Track	3" Track
4.5"	6.5"



**SECTIONAL DOORS**

**Hi-Lift (Lift Clearance Track)**



**Headroom Clearance Dimensions**

Cable Drum	2" Track 16" Radius	3" Track 16" Radius
D400-54	HL + 7.5"	HL + 9.5"
D525-54	HL + 9"	HL + 10.5"
D575-120	HL + 10"	HL + 12"
D6375-164	HL + 16"	HL + 16"
D800-120	HL + 17"	HL + 18"

**Side Room Req'd**

2" Track	3" Track
4.5"	6.5"

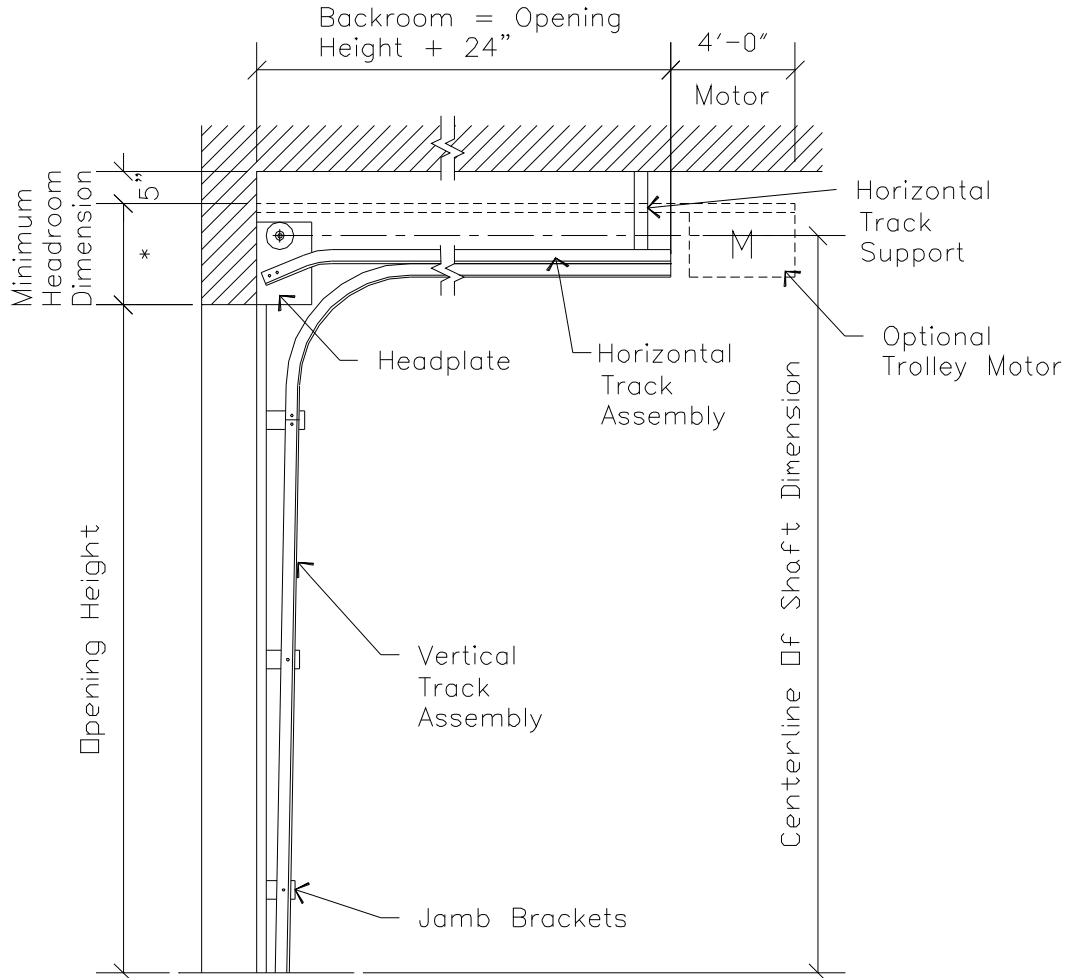
**Operation:**

- Manual lift
  - Chain hoist (add 6" side room) \*
  - Jackshaft motor operator (add 18" side room) \*
- \* - solid shaft req'd



**SECTIONAL DOORS**

**Low Headroom Track - Springs to Front (Standard)**



**Headroom Clearance Dimensions**

Opening Height	Cable Drum	2" Track	3" Track
12'-0"	D400-144	10.5"	13"
18'-0"	D525-216	11.5"	15.5"
26'-0" / Consult Factory	D800-312	11.5"	15.5"

**Side Room Req'd**

2" Track	3" Track
8"	9"

*Consult factory for narrower clearances*

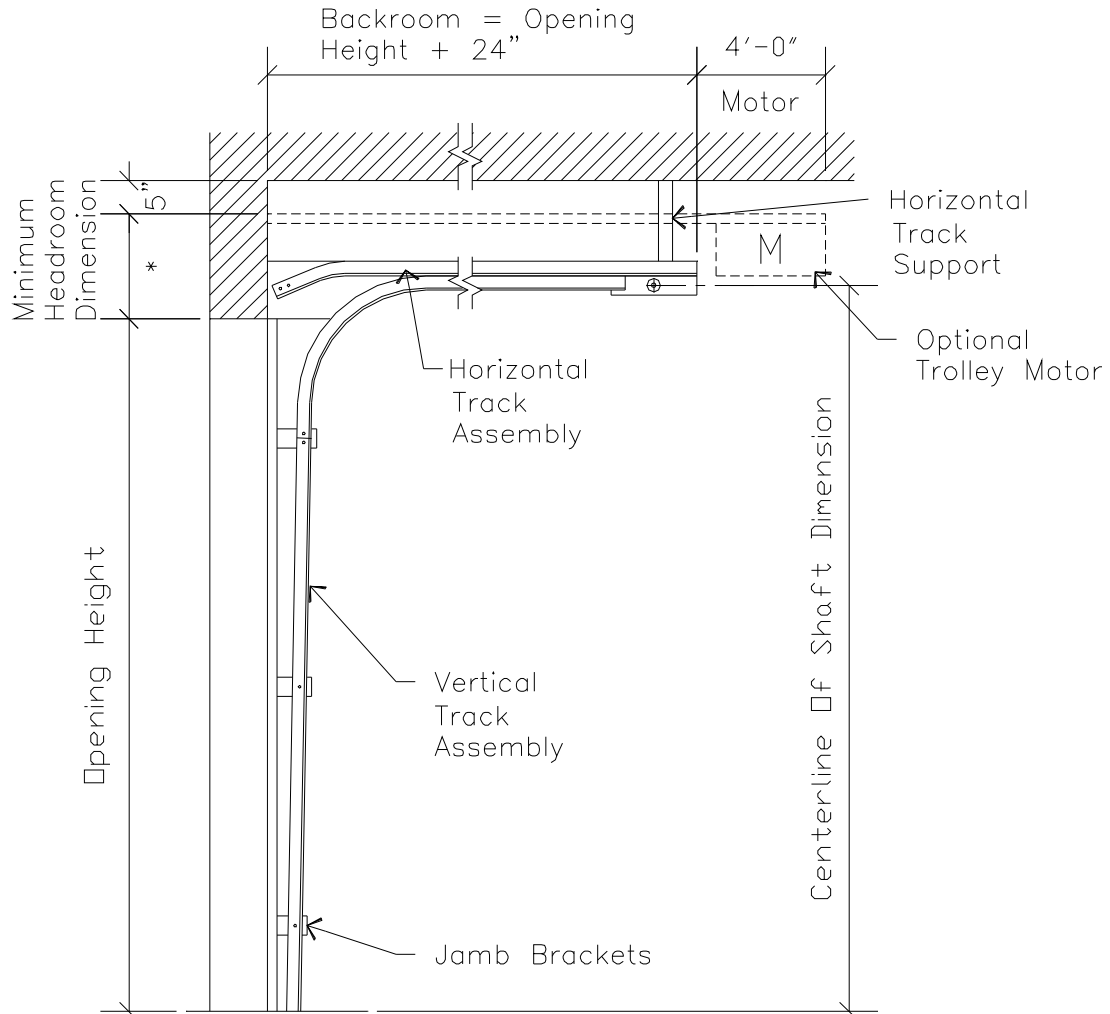
**Operation:**

- Manual lift \*
- Trolley motor operator (add 5" headroom)



**SECTIONAL DOORS**

**Low Headroom Track - Springs to Rear (Option)**



**Headroom Clearance Dimensions**

Opening Height	Cable Drum	2" Track	3" Track
12'-0"	D400-144	4.5"	7.5"
18'-0"	D525-216	5"	7.5"
26'-0" / Consult Factory	D800-312	5"	7.5"

**Side Room Req'd**

2" Track	3" Track
8"	9"

Consult factory for narrower clearances

**Operation:**

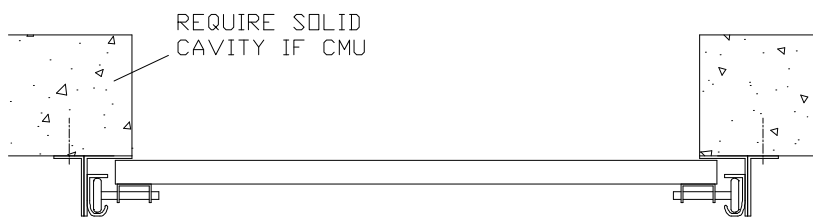
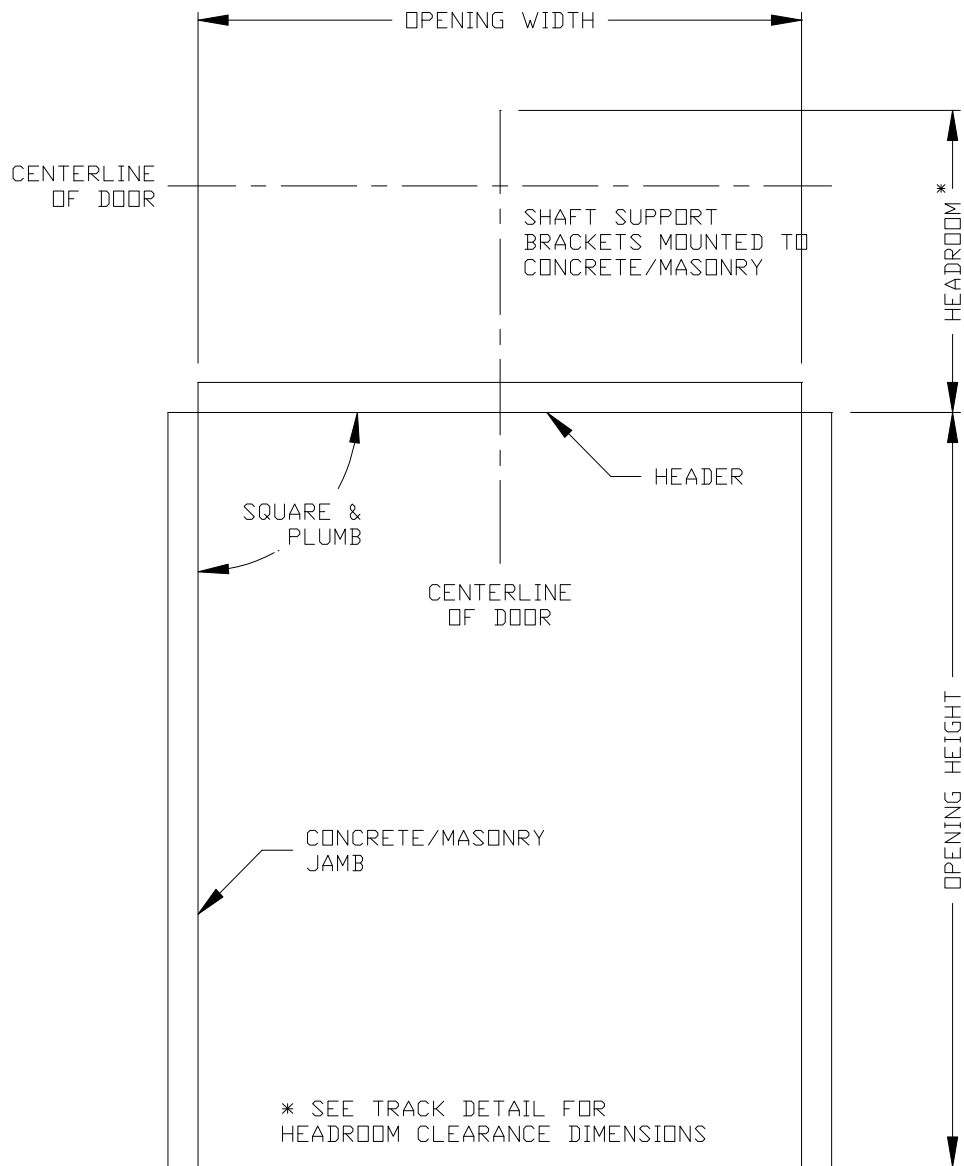
- Manual lift \*
- Trolley motor operator (add 5" headroom)



# United Steel Products, Inc.

33-40 127<sup>th</sup> Place, Flushing NY 11368 - (718)478-5330 - Fax: (718)7793202  
www.unitedsteelproducts.com

## SECTIONAL DOORS Wall Mount / Masonry Walls





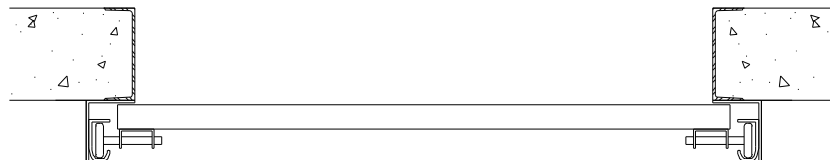
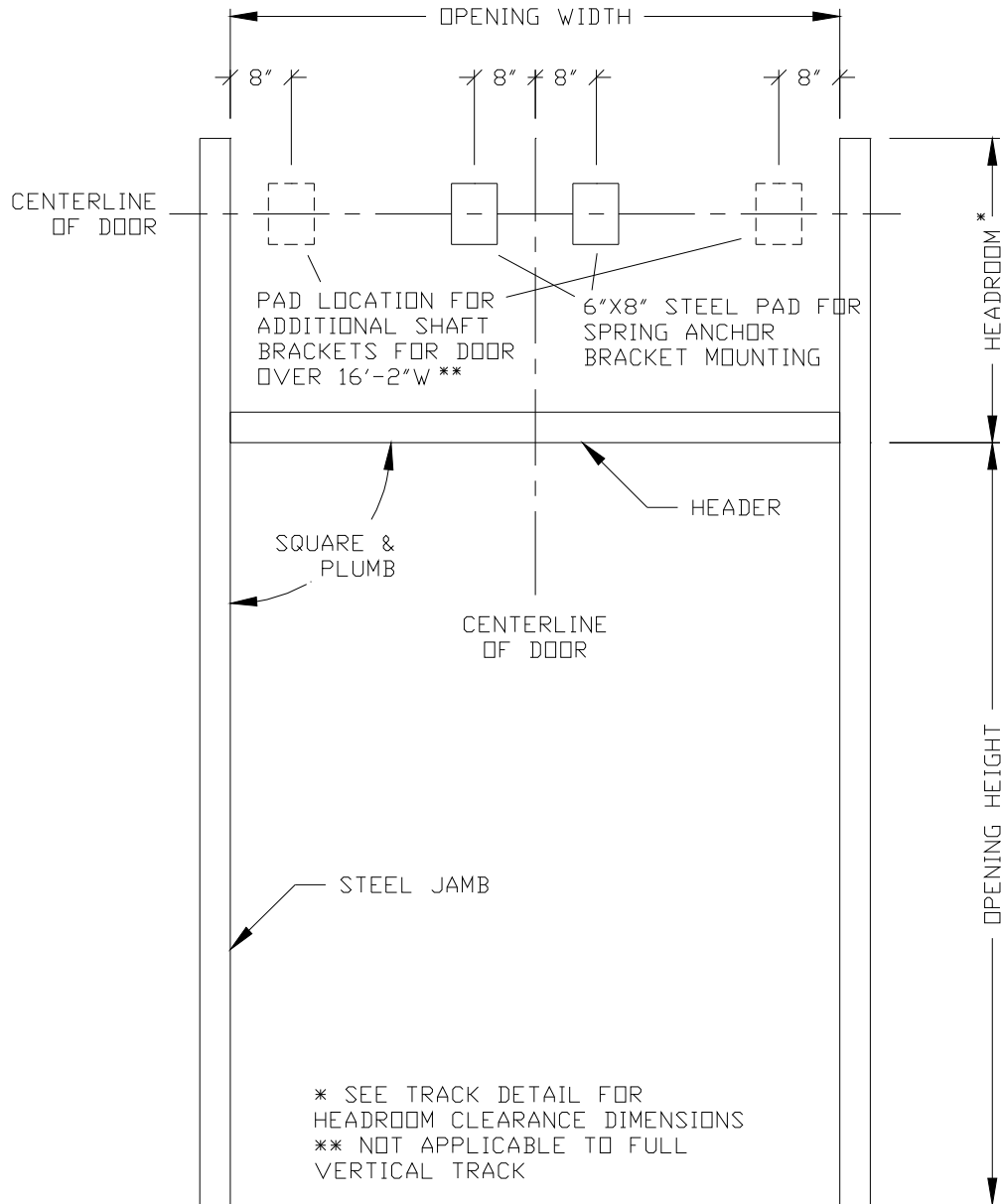


# United Steel Products, Inc.

33-40 127<sup>th</sup> Place, Flushing NY 11368 - (718)478-5330 - Fax: (718)7793202  
www.unitedsteelproducts.com

## SECTIONAL DOORS

### Wall Mount / Steel Jambs



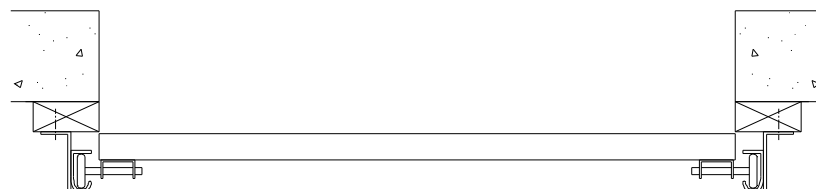
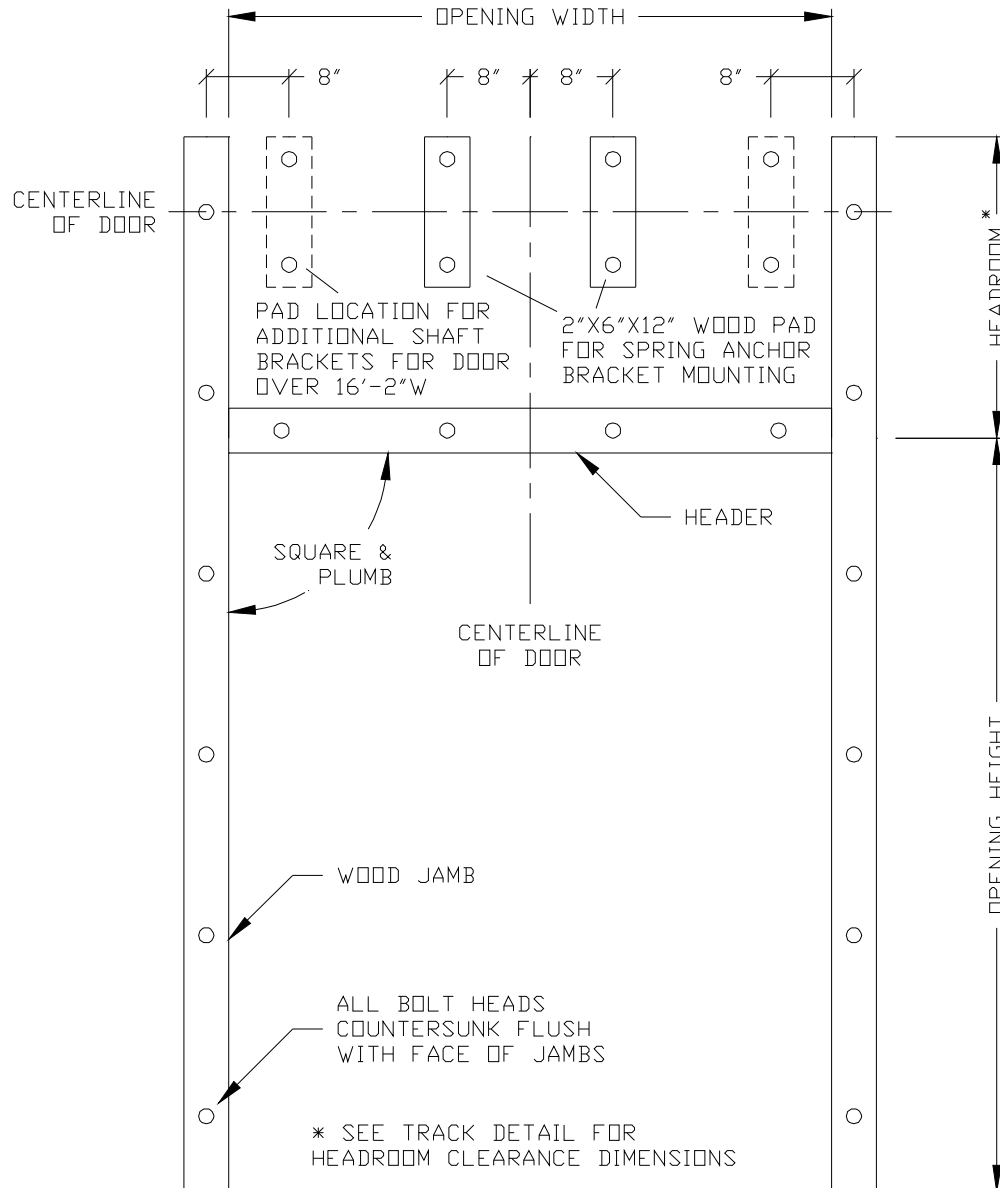


# United Steel Products, Inc.

33-40 127<sup>th</sup> Place, Flushing NY 11368 - (718)478-5330 - Fax: (718)7793202  
www.unitedsteelproducts.com

## SECTIONAL DOORS

Wall Mount / Wood Jambs





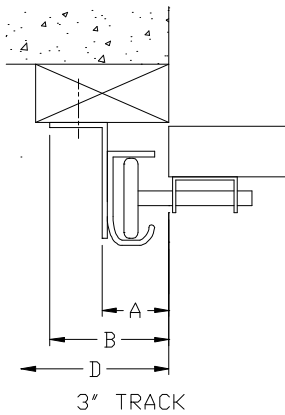
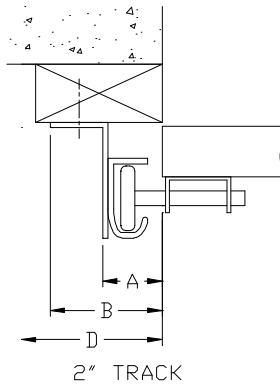
# United Steel Products, Inc.

33-40 127<sup>th</sup> Place, Flushing NY 11368 - (718)478-5330 - Fax: (718)7793202  
 www.unitedsteelproducts.com

## SECTIONAL DOORS

### Track Mount Details

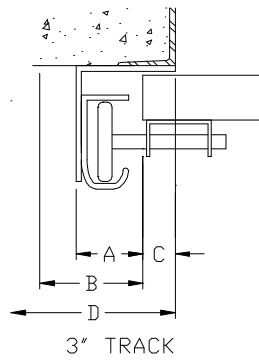
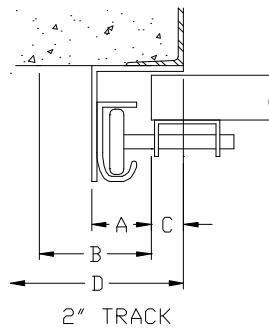
#### WOOD JAMBS



#### DIMENSIONS

TRACK	A	B	D
2"	1.5"	3.5"	5"
3"	2"	4"	6"

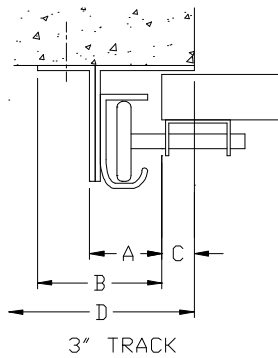
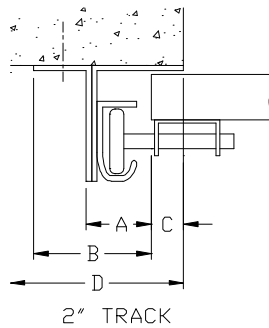
#### STEEL JAMBS



#### DIMENSIONS

TRACK	A	B	C	D
2"	1.5"	3.5"	1"	5"
3"	2"	4"	1"	6"

#### MASON JAMBS



#### DIMENSIONS

TRACK	A	B	C	D
2"	1.5"	3.5"	1"	5"
3"	2"	4"	1"	6"

#### SEAL OPTIONS

