

# the Hawthorn Plan



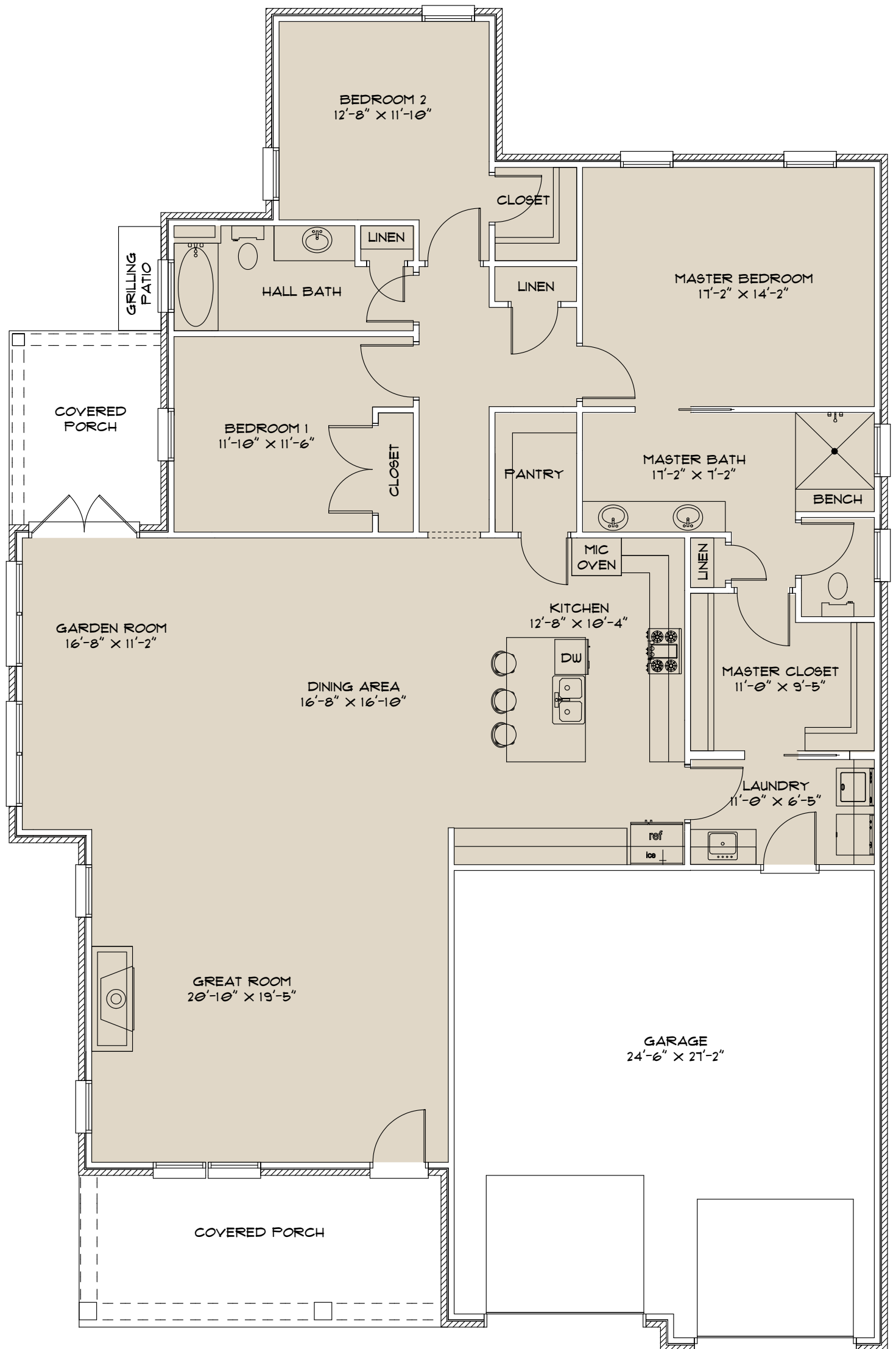
## Courtyard Front Entry



- 2,329 SF (Main Level)
- Courtyard Garden Room
- Great Room with Fireplace
- Courtyard Covered Porch or Open Patio
- Optional Second Floor
- 3 bedrooms, 2 bathrooms
- Open Living/Dining/Garden Room
- Flex room: office or 3rd bedroom
- Tour this Plan @ 10 Kipling Lane

The Hawthorn Plan

A



the **Legacy**  
at CARY CREEK

 **BERKSHIRE HATHAWAY** | Preferred Real Estate HomeServices