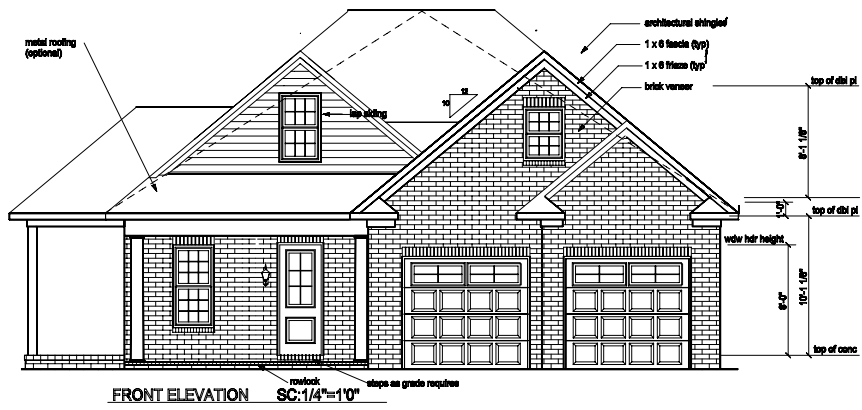


# the primrose plan

## Courtyard Front Entry



- 1,956 SF
- Courtyard Covered Porch
- Plan Width: 49' +
- Plan Depth: 64' +
- 3 bedrooms, 2.5 bathrooms
- Open Living/Dining/Kitchen
- Flex room: office or 3rd bedroom

The primrose plan

