



# FOX RIDGE

SPECIFICATIONS

# TABLE OF CONTENTS

SUB-CONTRACTOR LIST	PAGE 2
EXTERIOR	PAGE 3
LANDSCAPE, CONCRETE	PAGE 4
GARAGE DOOR, WINDOWS	PAGE 5
WOOD DETAILS	PAGE 6
HARDWARE	PAGE 7
GREAT ROOM	PAGE 8
DINING ROOM	PAGE 11
KITCHEN	PAGE 12
LOWER LIVING	PAGE 18
ENTRY	PAGE 22
MASTE SUITE	PAGE 24
JUNIOR MASTER	PAGE 31
GUEST BEDROOMS	PAGE 37
GUEST BATH 110	PAGE 38
GUEST BATH 112	PAGE 39
MAIN POWDER BATH	PAGE 45
LOWER POWDER BATH	PAGE 47
BARN DOORS	PAGE 49
OFFICE	PAGE 50
LAUNDRY ROOM	PAGE 51
MUDROOM	PAGE 53
MECHANICAL	PAGE 54
OROZCO ELECTRIC - SCOPE OF WORK	PAGE 54
CLOUD 9 - SCOPE OF WORK	PAGE 72

CONTRACTOR / BUILDER

CHRIS RHODES, SODA MOUNTAIN CONSTRUCTION, 970.846.0699

ARCHITECT

TRAVIS MATHEY, SODA MOUNTAIN DESIGN, 970.846.9454

CIVIL ENGINEER

WALTER MCGILL, FOUR POINTS SURVEYING & ENGINEERING, 970.819.1161

STRUCTURAL ENGINEER

BENJAMIN SCHUTT, APLENGLOW ENGINEERING SOLUTIONS, 970.879.1181

INTERIOR DESIGN

KATHLEEN ROSENCRANTZ, ROY SEVEN DESIGNS, 970.846.9174

CABINETRY

DARA RICKETTS, BARB STIMSON CABINET DESIGNS, , 970.879.7760

APPLIANCES

BARB STIMSON CABINET DESIGNS

COUNTER TOPS

GREG GRASSO, 970.846.5784

LIGHTING

TRICIA HUAN, THE LIGHT CENTER, 970.846.3471

ELECTRICAL

ROB OROZCO, OROZCO ELECTRIC, 970.846.6722

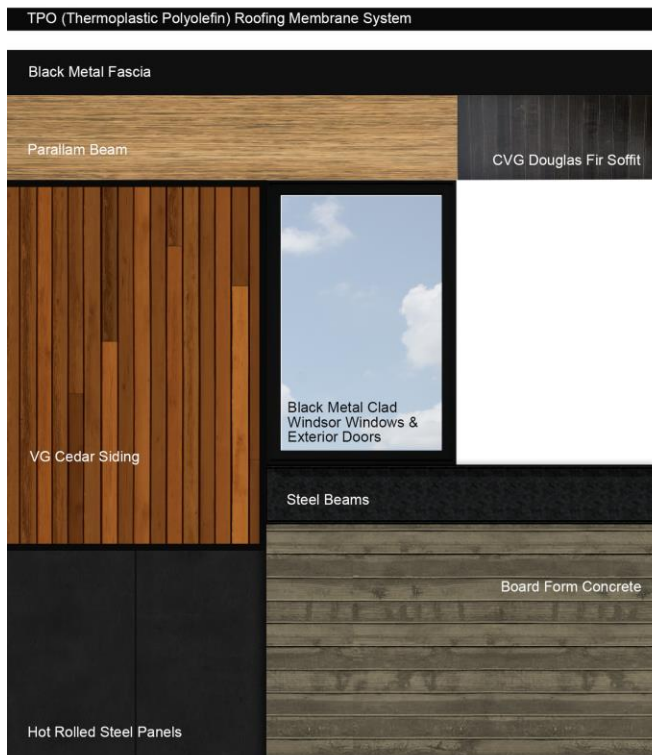
A/V, LOW VOLTAGE, ALARM, LIGHTING SYSTEM

THOMAS MCKENZIE, CLOUD 9, 970.819.7182

PLUMBING

DAVE TRUJILLO, ROCKY MOUNTAIN PLUMBING, 970.734.6058

# EXTERIOR



There are four types of materials used on the exterior:  
5" Thin lined clear vertical grain siding, connected to the home with an angled hidden nail fastener

- Horizontal board form concrete is used on the south elevation. This is a full 8" of solid concrete with a faux horizontal wood grain

- 16 Gauge Hot Roll Steel panels are applied to the house using exposed screws. The steel is cleaned using mineral spirits. It is then cleaned with warm water and a rag and dryer out to room temperature. Once the cleaning process is finished, several coats of Permalac (a high density exterior laquer) are applied on a horizontal application. The panels are prefinished and then installed in place

- The soffits are finished using a 3"x3/8" clear vertical grain Douglas Fir. The boards are connected to the framing using hidden nail fasteners and a tongue and groove connection.

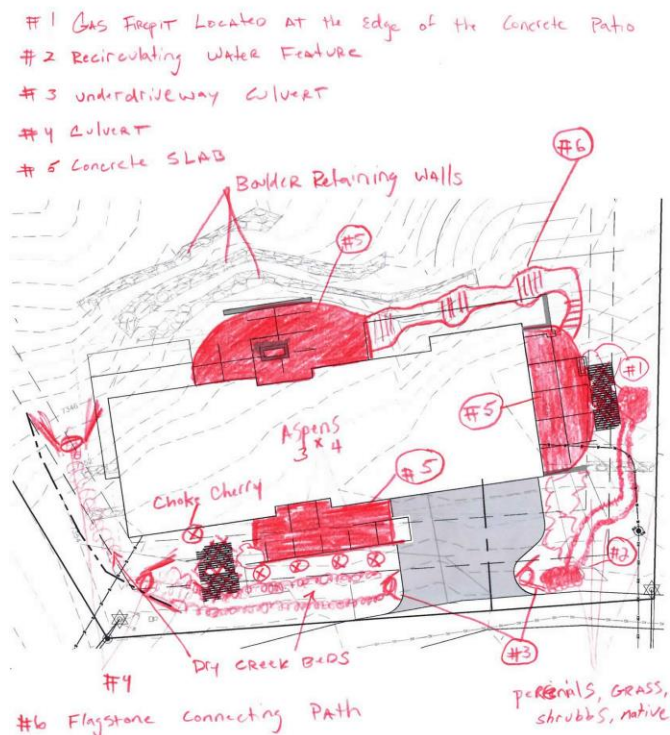
# ROOF

The roof is a 1/12 pitch. The membrane used is a white TPO (thermal plastic polyolefin). There are three areas of snow retention rods located on the roof to protect from snow sliding off the roof to the ground. One system is located on the master roof. The other two locations are mid span on the main roof and on the west side. The roof does not have any gutters or heat tape.

The R value of the blown in insulation of the roof is R50+. It is installed using 6 to 8" of corbond expanding insulation and then completed using netting and blown in cellulose to acquire the R50+ value. The roof was engineered through Alpenglow Engineering. It does need any maintenance or shoveling.

# LANDSCAPING

The landscape plan is comprised of a zero scape native design. A water feature is prominent at the entry of the home. It begins off the upper patio next to a gas burning fire pit. The water feature will be planted using perennials, low grass, and native ground cover to enhance the natural feel of the feature. A recirculating pump is used to cycle the water. As you enter the front door of the home a dry boulder creek bed follows the south side of the home. A choke cherry tree will be planted in front of the massive board form wall. Three to four aspen trees will be planted along the walkway and dry creek bed to buffer the neighboring home. Native grass and low plantings will bring this small area to life. The west side of the home continues with a dry boulder creek bed that will evacuate water to the ravine below the north side of the house. A series of massive boulder retaining walls make up the north side of the building envelope. A french drain system is used to promote water evacuation. A 5" colored concrete slab is dominant out the lower level rec room door. A premium hot tub location is located at the west end of this concrete slab. There is a small portion of shrubs or tall grasses that we intend to plant along the top of the boulder wall to buffer the drop to below. A creative flagstone pathway and steps connect the lower patio to the upper patio. Small shrubs and native grasses will be planted along the path to enhance the natural setting and transition in outdoor living areas. A bubble diagram and key is attached to help explain the landscape plan.

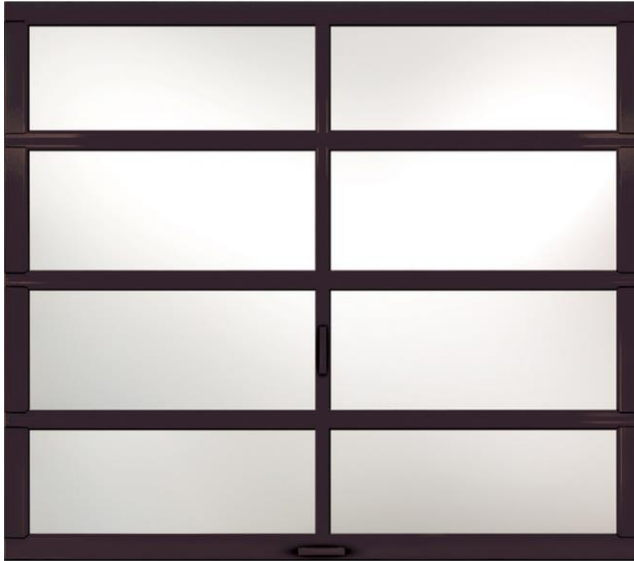


## CONCRETE

The concrete patios and walk way surfaces as well as the garage floor are a 5" reinforced colored concrete slab. A trowel finish was used on the entry, upper, and lower patios. Control lines were cut into the slab in case of cracking. All slab areas are sloped appropriately to move water away from the home or towards a drain. The entry driveway was poured using 3 to 4" of asphalt. It is sloped to evacuate water from the surface. Additional culverts were added to accumulate water and exit appropriately.

- UPPER PATIO approx. 366sf
- LOWER PATIO approx. 335sf

# GARAGE DOORS



CLOPAY DOOR "AVANTE"  
- rust-proof aluminum frame  
- wall of windows, lit from the interior  
-LIFTMASTER opener, 8587W

# WINDOWS

- The window package is a black metal clad Winsor window package. The glass is insulated and is a double pane window. Pine window and door jambs are stained a walnut color to match the walnut interior trim. There are several different types of windows on the home. IE fixed casements, pre hung, awning, and sliders. All windows are installed per the manufacturers specifications, tempered where necessary, and operable for egress.

# INSULATION

The insulation value of the exterior walls is R30+. The insulation used is netted and blown in using cellulose. All exterior windows, doors, and steel are insulated independently using an expanding spray foam. SMC also uses this spray foam in any other areas that we feel necessary to control a thermal break.

GARAGE DOORS - <http://www.allaccesssteamboat.com/steamboat-springs-Aluminum-Garage-Doors.aspx>

LIFT - <https://www.liftmaster.com/For-Homes/garage-door-openers/elite-series/model-8587W>

WINDOWS & EXTERIOR DOORS - <http://www.windsorpinnacle.com/>

# WOOD FLOORING

Wood floors to be installed in common living spaces on both levels, running parallel with the length of the house.

## MAIN LEVEL:

Great Room, Kitchen & Pantry, Dining, Office, Powder Bath, Open Bridge & Hallway

## LOWER LEVEL:

Living Room, Hallway, Powder Bath

- Mill Run Cottage Grade American Black Walnut
- Solid 3/4" Tongue & Groove Plank Links
- 5"-8" Plank Widths
- 6'-12' Plank Lengths
- End Match, Square Edge
- Glue Down / Nail Down, Moisture Barrier
- Glue Down, Moisture Barrier (lower level)
- Greengaurd Certified Epoxy Finish



# DOORS

Interior doors supplied by SUN MOUNTAIN

- A11-panel square, select walnut
- select walnut flat jamb
- 8', 1 3/4" thickness

# WOOD TRIM

The interior trim will be a clearcoated Walnut, complimenting the wood flooring

- 2" wide trim on doors and windows
- 4" high floor base trim
- Square, Eased Edges
- Flush transition /profile with door and window jambs

# WOOD VALANCE

A built-in, 12" Walnut valance in the main level great room

- Following the transom space between the lower and upper windows in the living space into the breakfast nook
- Housing for continous LED lighting
- Housing for window shades (existing hard-wiring for motorized options)

DOORS - <http://www.sunmountaindoor.com/doors/design/yourdoor/1/>

# DOOR HARDWARE

INTERIOR DOOR HARDWARE  
EMTEK "HERCULES" lever with square rosette -  
privacy set on all bathroom doors -  
passage set on bedroom and common doors -  
satin nickel finish -  
satin nickel door hinges -



# CABINET HARDWARE

Cabinet hardware to be contemporary in style. Finishes will coordinate with the plumbing finishes for each space.



# GREAT ROOM



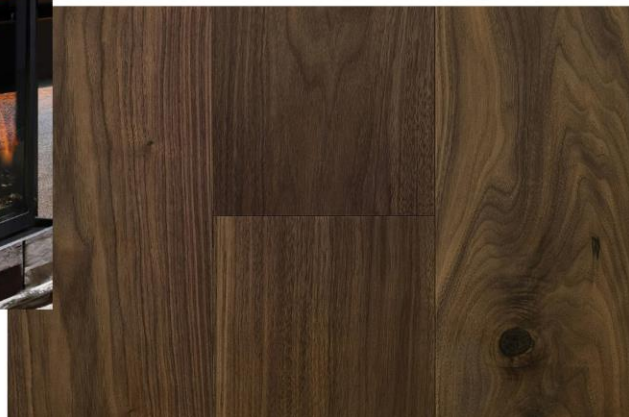
84" FANIMATION ceiling fan with light -  
satin nickel / black blades -

LBL monopoint swivel heads (X2) -  
satin nickel / black shield -  
either side of steel surround -

KINGSMAN MCVP42 -  
3-Sided, 42" Fireplace -

STEEL FIREPLACE SURROUND  
\*\*\*NO ROCK USED\*\*\*  
square framing around unit -  
full height to ceiling, angled -  
custom steel mantle -

WALNUT -  
solid walnut flooring -  
walnut window & door trim -  
custom walnut light & shade valance -

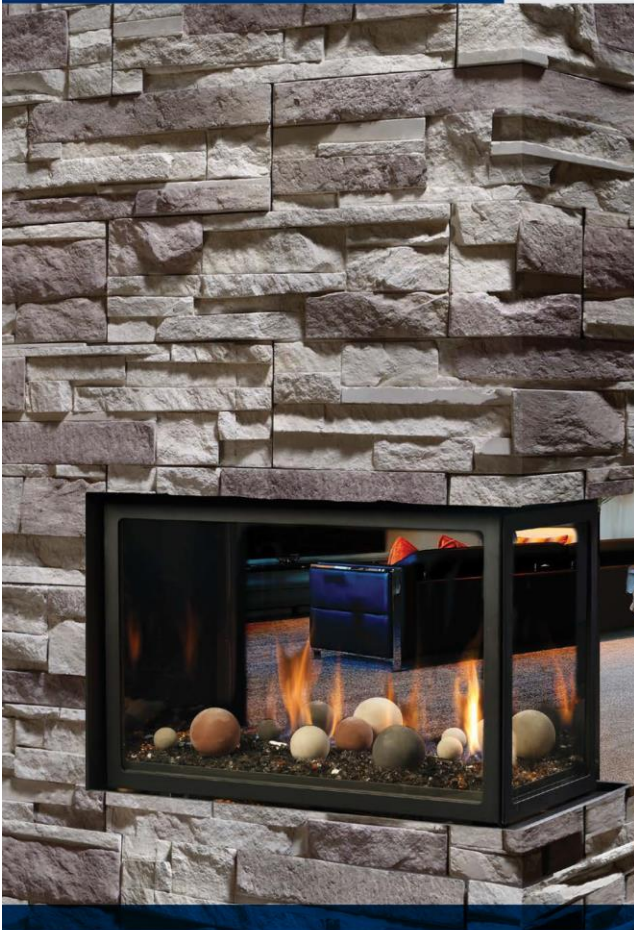




## MCVP42

ZERO CLEARANCE DIRECT VENT PENINSULA GAS FIREPLACE

Model	MCVP42N/NE	MCVP42LP/LPE	MCVP42NH/NHE	MCVP42LPH/LPHE
Fuel	Natural	Propane	Natural	Propane
Gas Control	Millivolt / IPI	Millivolt / IPI	Millivolt / IPI	Millivolt / IPI
Input Max.	30,250 BTU	28,500 BTU	31,250 BTU	29,000 BTU
Input Min.	21,000 BTU	23,000 BTU	21,250 BTU	23,000 BTU
FE (P.4.1-02)	53.5% / 54.6%	54.8% / 55.9%	64.8% / 66.6%	66.3% / 68%



### STANDARD FEATURES

- Dedicated Clean View appliance
- Millivolt or IPI valve system allows operation during a power failure with Hi/Low heat and flame adjustment
- Safety Screen Barrier\*



Ecran de sécurité

### OPTIONAL FEATURES

#### Porcelain Reflective Liner

#### Glass Tray

For use with Bronze Glass Media, Cannonballs, and Driftwood Log Set

#### Accent Lighting

For use with the Glass Tray

#### Log Set

Oak (8 piece) Set, and Driftwood (6 Piece) Set

#### Brick Refractory Liner

Traditional

#### Thermostat

Wall Mount Millivolt Thermostat or Programmable Thermostat

#### Remote Control

Thermostat on/off, Thermostat on/off modulating, Thermostat on/off modulating and light control.



The unit illustrated is a MCVP42NH Peninsula Fireplace - Natural Gas, MP42GT Glass Tray, ZG5C Glass Media - Bronze x (5), RBCB1 Cannonballs, MP42PL Porcelain Reflective Liner.



THE ULTIMATE IN DESIGN, ENGINEERING & QUALITY

# DESIGNER CLEAN VIEW™ FIREPLACES

Make the most of the best view in the house with our line of Zero Clearance Direct Vent Peninsula Gas Fireplaces. Ideally suited for new construction or renovations anywhere in your home.

### OPTIONS



The unit illustrated is a MCVP42NH Peninsula Fireplace - Natural Gas, MP42GT Glass Tray, ZG5C Glass Media Bronze x (5), M42LOG3 Drift Wood Log Set, MP42PL Porcelain Reflective Panel.

### STYLING



M42LOG4  
Oak Log Set



M42LOG3  
Driftwood Log Set



Multi-coloured  
Cannonballs

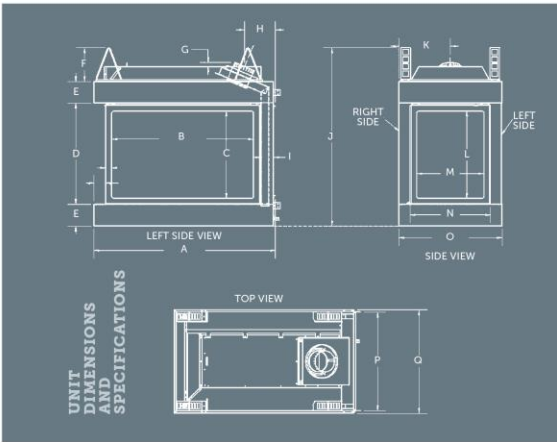


Decorative  
Ember Glass



Traditional  
Brick Liner RLT

FRONT VIEW	SIDE VIEW	TOP VIEW
A	43 1/8"	-
B	33 1/8"	-
C	20 1/8"	-
D	23 1/8"	-
E	45 1/8"	-
F	8"	-
G	1"	-
H	7 1/8"	-
I	3"	-
J	-	42 1/4"
K	-	12 1/4"
L	-	20 1/8"
M	-	16"
N	-	19"
O	-	24 1/4"
P	-	23 1/4"
Q	-	24 1/2"



### UNIT AND FRAMING SPECIFICATIONS (IN.)

Top Flue Models	Height Actual	Height Framing	Width Actual	Width Framing	Depth Actual	Depth Framing
MCVP42	42 1/4"	42 1/8"	43 1/8"	42 1/2"	24 1/8"	23 3/8"

# DINING ROOM

MURRAY FEISS  
"KLOHE" LED, 30" PENDANT  
OIL RUBBED BRONZE FINISH



SONNEMAN  
"STIX" LED, 36" PENDANT  
SATIN BLACK FINISH

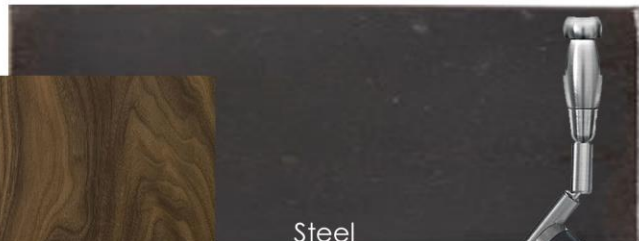


The Dining Room Fixture will hang directly from the tongue and groove ceiling, at 14'H.  
There are 2 options to choose from, either circular or linear

With the open Living-Dining space, the Walnut floor carries through seamlessly, as does your view of the fireplace structure and light valance



- Solid Walnut Flooring
- Walnut Window & Door Trim
- Custom Walnut Light & Shade Valance



Steel



LBL Monopoint Swivel Heads (X2) -  
Satin Nickel / Black Sheild  
"ART" wall across from Fireplace

# KITCHEN



## CABINETRY

custom designed cabinetry & island -  
ENCORE EV GREY OAK, engineered veneer -  
full extension, soft close drawer guides -  
soft close doors -  
slab drawer & door front -  
vertical grain-match -  
brushed nickel hardware (exact style TBD)



EV Grey Oak



Blizzard

Glass

## PANTRY

### PRO CLOSET -

melamine closet line, fully adjustable -  
shelving from floor to 84"H -  
radius corner shelf -  
white finish -

## COUNTER TOPS

solid surface quartz material -  
CAESARSTONE, color: blizzard -  
3cm thickness -  
eased edge, square corners -  
island 4'x15' (approx. 60sf)  
perimeter approx. 26sf



Walnut

## BACK SPLASH

EMSER TILE, VOGUE GLASS, 2"x16", grey glossy -  
laid horizontally, square stack -


1



**VOGUE™ - Glass**  
Gray  
GLASS WALL TILE  
2" x 16" W87VOGUGR0216P

2" x 16"



Color shade variations

V1 Low	V2 Medium	V3 High	V4 Substantial
-----------	--------------	------------	-------------------



#### APPLICATIONS

Product	Floor	Wall	Counter	Residential	Commercial Light	Commercial Heavy	Outdoor use	Go Linear	Green Friendly
VOGUE™ - Glass Gray		X		X	X	X			

**GROUT JOINT  
RECOMMENDATION**  
Approximately 3/16"

#### TASK LIGHTING

- TECH Lighting
- architectural wall monorail
- installed above upper cabinets
- (1) 4' track with 2 monopoints
- (1) 8' track with 3 monopoints
- arm extension 18"
- satin nickel finish, black shield
- hidden magnetic transformer

#### UNDER CABINET LED LIGHTING

#### PENDANTS (5)

- REJUVENATION HARDWARE
- from T&G ceiling above island
- hang at level height above island
- follow ceiling angle
- metal shade, 13"Wx15"H
- oil rubbed bronze finish





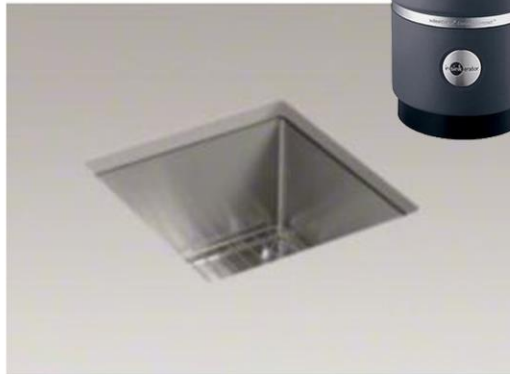
KITCHEN SINK  
 KOHLER "STRIVE" -  
 undermount, single bowl -  
 stainless steel -  
 35"Wx18"D -

FAUCET  
 BLANCO "CULINA"-  
 semi-pro, pull-out spray -  
 2.2 GPM -  
 polished chrome finish -  
 22"H -



PREP SINK  
 KOHLER "STRIVE" -  
 undermount, bar sink -  
 stainless steel -  
 15"Wx15"D -

PREP FAUCET  
 BLANCO "CULINA" -  
 mini kitchen faucet, pull-out spray -  
 1.8 GPM -  
 17"H -



GARBAGE DISPOSAL (X2)  
 IN-SINK-ERATOR "EVOLUTION"

KITCHEN SINK - <http://www.us.kohler.com/us/Strive-35-x-18-5-16-x-9-5-16-under-mount-extra-large-single-bowl-kitchen-sink-with-basin-rack/productDetail/kitchen-sinks/1029991.htm?skuId=1029984&brandId=empty&>

KITCHEN FAUCET - [http://shop.ferguson.com/product/Blanco-B441331-Chrome-678744?Ntt=B441331&Ns=AvailabilitySort%7Co%7C%7CPrimary\\_Finish%7C1%7C%7CSort\\_Order%7C1&term=B441331](http://shop.ferguson.com/product/Blanco-B441331-Chrome-678744?Ntt=B441331&Ns=AvailabilitySort%7Co%7C%7CPrimary_Finish%7C1%7C%7CSort_Order%7C1&term=B441331)

PREP SINK - <http://www.us.kohler.com/us/Strive-15-x-15-under-mount-bar-sink-with-basin-rack/productDetail/bar-sinks/941428.htm?skuId=941405&brandId=empty&>

MINI FAUCET - <http://shop.ferguson.com/product/blanco-B441624-chrome-878492?tb=>

GARBAGE DISPOSAL  
[http://shop.ferguson.com/decor/product.pl?Ntt=IPRO750&Ns=AvailabilitySort%7Co%7C%7CPrimary\\_Finish%7C1%7C%7CSort\\_Order%7C1&term=IPRO750&mid=330180&fh=Black%20/%20Stainless](http://shop.ferguson.com/decor/product.pl?Ntt=IPRO750&Ns=AvailabilitySort%7Co%7C%7CPrimary_Finish%7C1%7C%7CSort_Order%7C1&term=IPRO750&mid=330180&fh=Black%20/%20Stainless)

REFRIGERATOR

- THERMADOR "FREEDOM" COLUMNS
- stainless steel, flat panel
- 36" professional handles
- refrigerator 30"Wx84"H
- freezer 18"Wx84"H

RANGE TOP

- DACOR "DISCOVERY"
- stainless steel
- 48"

DACOR DOWNDRAFT  
& BLOWER

DOUBLE OVENS

- THERMADOR "MASTERPIECE"
- stainless steel
- professional handles

DISHWASHER

- DACOR "RENAISSANCE"
- panel ready (match cabinetry)

MICRO-DRAWER

- SHARP
- stainless steel

BEVERAGE / WINE COOLER

- MARVEL
- stainless frame, glass door

DUMBWAITER

- cabinet panel door
- lowers to garage access



REFRIGERATOR - <http://www.thermador.com/refrigeration/refrigerator-columns/t30ir8oosp-30-inch-builtin-fresh-food-column>

FREEZER - <http://www.thermador.com/refrigeration/freezer-columns/t18if8oosp-18-inch-builtin-freezer-column>

RANGE TOP - <https://www.dacor.com/Our-Products/Cooktops/Discovery-Gas-Rangetops-DYRTP.aspx>

DOWNDRAFT - <http://dacor.com/Products/Ventilation/Renaissance-48-46-36-30-Downdrafts>

BLOWER - <http://www.mountainhighappliance.com/en/catalog/product/155343-Dacor-REMP16>

DOUBLE OVENS - <http://www.thermador.com/cooking/ovens/med302jp-30-inch-masterpiece-series-double-oven-with-professional-handle>

DISHWASHER - <http://dacor.com/Products/Dishwashers/Renaissance-24-Integrated-Dishwasher>

MICRO-DRAWER - [http://www.mountainhighappliance.com/en/catalog/product/277793-Sharp-SMD2470ASC#277793\\_product\\_1](http://www.mountainhighappliance.com/en/catalog/product/277793-Sharp-SMD2470ASC#277793_product_1)

WINE COOLER / BEVERAGE CENTER - <http://www.mountainhighappliance.com/en/catalog/product/235498-Marvel-ML24BCGiRS>

# LOWER LIVING

## BAR SINK

- NATIVE TRAILS "MOJITO"
- self rimming bar sink
- hammered brushed nickel
- 16"Diam, 13" bowl diam.

## FAUCET

- KOHLER "KARBON"
- single handle
- polished chrome & black
- 13"H

## BEVERAGE CENTER

- MARVEL
- panel ready (match cabinetry)

## STEEL COUNTER TOPS

## CABINETRY

- CURRENT TAKASE TEAK
- builder grade textured melamine
- slab door fronts
- soft close doors

## LIGHTING

- 5" recessed cans (X4)
- 4" recessed cans (X2) in cabinetry niches
- wiring for decorative chandelier/fixture



BAR SINK - <http://shop.ferguson.com/product/Native-Trails-CPS16-Brushed-Nickel-783804?Ntt=NATIVE+TRAILS&N=80+3000361>

BAR FAUCET - <http://shop.ferguson.com/product/kohler-K6227C12-polished-chrome-288883?tb=>

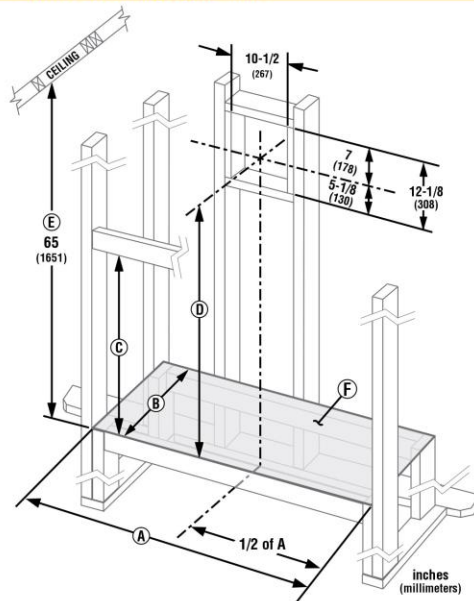
WINE COOLER - <http://www.agamarvel.com/marvel/products/beverage-centers/ml24bcg1/>



FIREPLACE -

[http://superiorfireplaces.us.com/system/document\\_files/files/ooo/ooo/962/original/785628M\\_DRL\\_6500\\_09.16.15\\_WEB.pdf?1452867514](http://superiorfireplaces.us.com/system/document_files/files/ooo/ooo/962/original/785628M_DRL_6500_09.16.15_WEB.pdf?1452867514)

## FLAT WALL FRAMING SPECIFICATIONS



**DRL6554**

A	66"
B	20-1/2"
C	46-3/4"
D	48-1/4"
E	Min. height from appliance base front to ceiling
F	Mounting platform



Approved for use with European Copper and Chimney Classics chimney tops, which improve performance and add an elegant touch.

**On the cover:** DRL6542 shown with Brushed Nickel Bezel, Black Satin Surround, and Goldfinger Crushed Glass Media

### IMPORTANT NOTES:

As with any fireplace, this appliance is extremely hot during operation. Read and understand all operating instructions before using this appliance. For further information, consult your dealer.

Local conditions, such as elevation, wind, vent configuration and choice of fuel will affect overall appearance of the fire and heating performance. Performance can also vary with home design and insulation, climate, condition and type of fuel used, appliance location, burn rate, accessories chosen, chimney installation and how the appliance is operated.

Diagrams, illustrations and photographs are not to scale—consult installation instructions. Product designs, materials, dimensions, specifications, colors and prices are subject to change or discontinuance without notice.



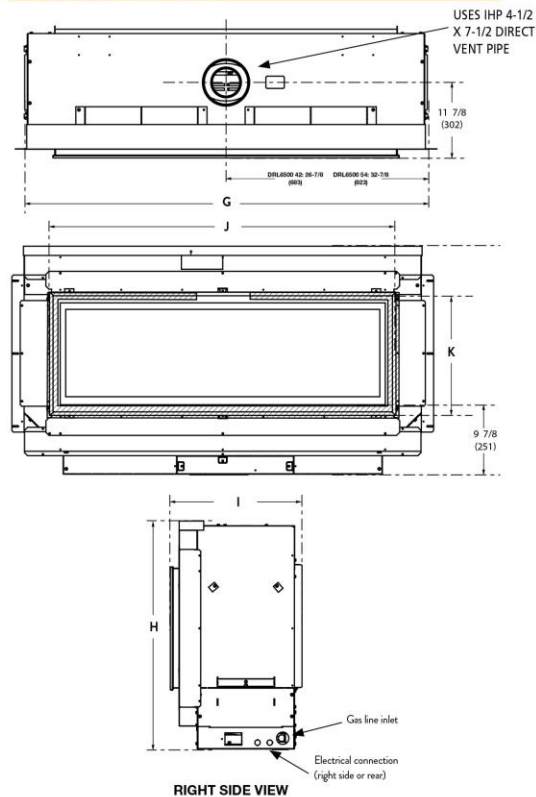
© 2015 Innovative Hearth Products  
785628M 09/15

Visit us online



SuperiorFireplaces.us.com

## APPLIANCE SPECIFICATIONS



**RIGHT SIDE VIEW**

**DRL6554**

G	65-3/4"
H*	36-3/8"
I	20-1/2"
J	56-1/8"
K	19-5/8"

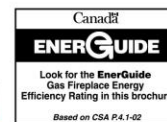
\*Additional 9-3/8" for standoffs

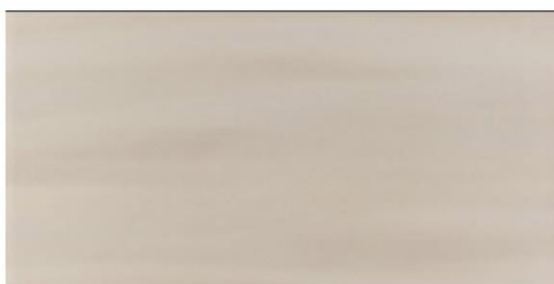
### FIREPLACE EFFICIENCIES — Listed to ANSI Z21.88 as a gas fireplace heater.

MODEL	FUEL	BTU/HR	AFUE**	P4/ENERGUIDE*
DRL6554	NG	26,000-37,000	70.2%	66.9%



\*Intermittent ignition systems.

\*\*Annual Fuel Utilization Efficiency (AFUE) is the recognized U.S. rating system for the total efficiency of heating products.





## IKI 36G

<b>Code</b>	IKI 36G
<b>Collection</b>	254 - Iki
<b>Colour</b>	101 - GREY
<b>Technology</b>	FULL BODY PORCELAIN TILE
<b>Item Description</b>	PLAIN
<b>Size</b>	cm 30,0 x 60,0
<b>Finish</b>	Natural
<b>Structure</b>	Smooth
<b>Surface look</b>	Semi-glossy
<b>Edge</b>	Monocaliber, Rectified
<b>Thickness in mm</b>	10,5
<b>UPEC</b>	U4 P4+ E3 C2
<b>Unity of measure</b>	CO
<b>Environmental certification</b>	 

# ENTRY



## FRONT DOOR

- SUN MOUNTAIN DOORS
- 3/6X9/0, stile and rail, clear glass
- ROCKY MOUNTAIN HARDWARE "METRO"
- 2 1/4"x30" escutcheon
- grip-to-grip mortise lock
- olympus handle 15"
- dark white bronze finish (WD), solid bronze material

## ENTRY CHANDELIER

- JONATHAN ADLER "RIO"
- each globe adjustable up to 11' in height
- small globes 12" diam
- large globes 18" diam

## PENDANTS (X3)

- JONATHAN ADLER "RIO"
- each centered in stairwell windows above landing
- 12" diam

## EXTERIOR PENDANT

- TROY LIGHTING "BENNINGTON"
- bronze finish, matte opal glass
- 13"Wx15"H

## TILE

- DESIGN MATERIALS "STREAMING"
- through body porcelain
- metal edge transition to wood floor
- color smoke, 18"x36"



(WD)

RMH - <http://www.rockymountainhardware.com/products/door-hardware/door-sets/entry-door-sets/thumblatch-entry-sets/metro-entry-set-g207>

166

## Streaming

DECORI. DECORS. Decors. Dekor. Decoraciones. Декоры.



**7500**  
STR Ivory Tessere  
30x30 - 12"x12"  
32 ▲



**7501**  
STR Grey Tessere  
30x30 - 12"x12"  
32 ▲



**7502**  
STR Smoke Tessere  
30x30 - 12"x12"  
32 ▲



**7503**  
STR Olive Tessere  
30x30 - 12"x12"  
32 ▲



**7504**  
STR Black Tessere  
30x30 - 12"x12"  
32 ▲

	Str. Ivory	Str. Grey	Str. Smoke	Str. Olive	Str. Black
Battiscopa 10x60 Rett. - 4"x24" Rect.	7490 30 ●	7491 30 ●	7492 29 ●	7493 29 ●	7494 30 ●
Battiscopa 7,5x90 Rett. - 3"x36" Rect.	7495 33 ●	7496 33 ●	7497 33 ●	7498 33 ●	7499 33 ●

IMBALLI E PESI. PACKAGING AND WEIGHTS. Emballages et poids. Verpackung und Gewicht. Embalajes y pesos. Упаковка и Вес.

	Pcs	Box Mq/Box	Kg	Colli	Pallet Mq/Pallet	Kg S
STR 15x60 Rett. - 6"x24" Rect.	12	1,08	23,04	40	43,20	922
STR 15x90 Rett. - 12"x36" Rect.	9	1,215	25,65	36	43,74	923
STR 22,5x90 Rett. - 9"x36" Rect.	6	1,215	25,80	36	43,74	929
STR 45x90 Rett. - 18"x36" Rect.	3	1,215	26,10	36	43,74	940
STR 45x45 Rett. - 18"x18" Rect.	5	1,0125	22,20	33	33,41	732
STR 30x60 Rett. - 12"x24" Rect.	6	1,08	24,00	40	43,20	960
STR 60x60 Rett. - 24"x24" Rect.	3	1,08	24,30	40	43,20	972
STR Tessere 30x30 Rett. - 12"x12" Rect.	5	0,44402	9,05	-	-	-
STR Battiscopa 10x60 Rett. - 4"x24" Rect.	10	6 ml	15,00	60	360 ml	900
STR Battiscopa 7,5x90 Rett. - 3"x36" Rect.	6	5,4 ml	8,40	102	550,8 ml	857

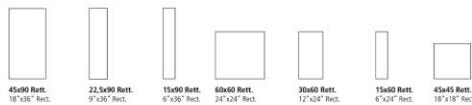
164

## Streaming

GRES FINE PORCELLANATO COLORATO IN MASSA. FINE FULL-BODY COLOURED PORCELAIN STONEWARE. Grés cérame coloré pleine masse. Durchgefärbtes Feinsteinzeug. Grés fine porcelánico coloreado en toda su masa. Керамогранит окрашенный в массу.

FORMATI / SPESSORI. SIZES / THICKNESS. Formats / Épaisseurs. Formate / Stärken. Formatos / Grosos. Форматы / Толщины.

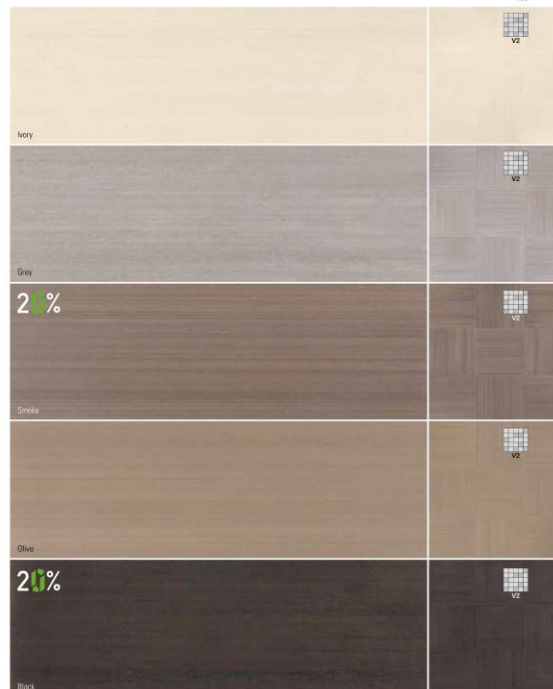
10 mm



CODICI/ARTICOLI. PRODUCT CODE. Code produit./Artikelnummer. Código de producto. Код артикула.	Str. Ivory	Str. Grey	Str. Smoke	Str. Olive	Str. Black
45x90 Rett. 18"x36" Rect.	7490 125 ●	7491 125 ●	7492 125 ●	7493 125 ●	7494 125 ●
22,5x90 Rett. 9"x36" Rect.	7495 127 ●	7496 127 ●	7497 127 ●	7498 127 ●	7499 127 ●
15x90 Rett. 6"x36" Rect.	7500 127 ●	7501 127 ●	7502 127 ●	7503 127 ●	7504 127 ●
60x60 Rett. 24"x24" Rect.	7495 107 ●	7496 107 ●	7497 105 ●	7498 105 ●	7499 107 ●
30x60 Rett. 12"x24" Rect.	7495 91 ●	7496 91 ●	7497 89 ●	7498 89 ●	7499 91 ●
15x60 Rett. 6"x24" Rect.	7500 91 ●	7501 91 ●	7502 90 ●	7503 90 ●	7504 91 ●
45x45 Rett. 18"x18" Rect.	7495 71 ●	7496 71 ●	7497 70 ●	7498 70 ●	7499 71 ●

CARATTERISTICHE TECNICHE. TECHNICAL FEATURES. Características técnicas. Technische Eigenschaften. Características técnicas. Технические характеристики.	VALORE MEDIO/AVERAGE VALUE. Valeur Moyenne. Durchschnittswert. Valor Medio. Среднее значение.
ISO 10545-6	≤ 150 mm²
ISO 10545-12	RESISTE RESISTANT Résistant. Beständig. Resistente. Resistente.
ASTM C1028 (C.O.F.)	≥ 0,42 WET
ANSI A137.1 (C.O.F.)	≥ 0,42 WET
B.C.R.A.	≥ 0,40
DIN 51130	R 9
ISO 10545-13	UP-III-A-UPA

165



# MASTER SUITE



CEILING FAN  
LED light -  
oil rubbed bronze -  
52" -



MONOPOINTS (X5)  
LBL swivel heads -  
satin nickel, black shield -

SWITCHED OUTLETS

EXTERIOR SCONCES (x2)  
MINKA LAVERY "BAY VIEW" -  
oil rubbed bronze -  
8"Wx20"H -

CARPET  
ROYALTY "DIVA" -  
color marema -

WALK-IN CLOSET  
PRO CLOSET -  
melamine closet line -  
fully adjustable -

espresso finish with oil rubbed bronze hardware -

WASHER / DRYER  
WHIRLPOOL "DUET" stack kit -  
front load washer with steam -  
front load dryer with steam -  
white -

CLOSET LIGHT (X3)  
FEISS "DAKOTA" -  
espresso finish -  
14"diam -





TUB  
- AMERICAN STANDARD "SEDONA"  
- white, 63"Lx30"W

TUB FILLER  
- BRIZO "ODIN"  
- polished chrome

TUB CHANDELIER  
- TROY "SAUSALITO"  
- dark bronze  
- 25"Wx16"H

STEAM SHOWER  
- BRIZO rainheads (X2)  
- BRIZO "ODIN" hand shower



FLOOR TILE  
DAL TILE "FABRIQUE" -  
creme linen -  
24"x24" -

VANITY WALL & SHOWER  
FLORIDA TILE "TIME 2.0" -  
snow -  
12"x24" -

ACCENT  
DAL TILE "ILLUMINI" mosaic

SHOWER LID  
DAL TILE "FABRIQUE" -  
creme linen -  
12"x12" -

SHOWER PAN  
FLORIDA TILE "TIME 2.0" -  
snow -  
2"x2" mosaic -

#### CABINETRY

- floating vanity knotty adler, raisin stain
- wide stile and rail
- full extension soft close drawer guides
- soft close doors

#### SCONCES (X4)

- HUBBARDTON FORGE "ANTASIA"
- dark smoke finish
- 5"Wx26"H, (2 right, 2 left)

#### COUNTER TOPS

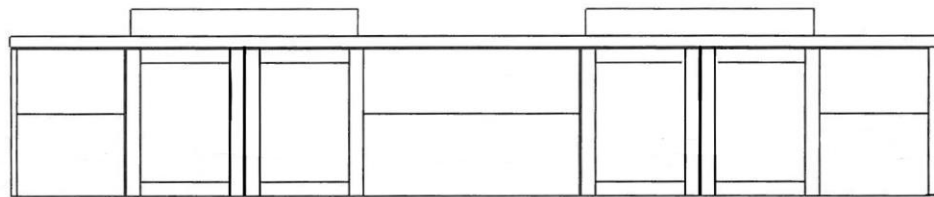
- (& shower bench top)
- CAESARSTONE, color: linen -
- 3cm thickness, eased edges -

#### SINK (x2)

- NAMEEEKS "TEOREMA" -
- white -
- 32"Wx15"Dx5"H -

#### FAUCET (X2)

- DELTA "SIDERNA" -
- polished chrome -



# COLORBODY™ PORCELAIN FABRIQUE™

## SIZES

NOMINAL	ACTUAL	SQ.FT. CARTON	PIECES PER CARTON
24" x 24" Field Tile (Unpolished)	23-9/16" x 23-9/16" (59.8 cm x 59.8 cm)	15.49	4
12" x 24" Field Tile (Light Polished & Unpolished)	11-3/4" x 23-9/16" (29.8 cm x 59.8 cm)	15.49	8
12" x 12" Field Tile (Unpolished)	11-3/4" x 11-3/4" (29.8 cm x 29.8 cm)	10.65	11
2" x 2" Mosaic (Unpolished)	11-3/4" x 11-3/4" (29.8 cm x 29.8 cm) (Mesh-mounted on 12" x 12" sheet)	10.65	11

## LINEAR OPTIONS™ SIZES\*

NOMINAL	ACTUAL	SQ.FT. CARTON	PIECES PER CARTON
6" x 24" Field Tile	6" x 24" (14.63 cm x 59.8 cm)	10.65	11
4" x 24" Field Tile	4" x 24" (9.73 cm x 59.8 cm)	6.46	10
2" x 24" Field Tile	2" x 24" (4.67 cm x 59.8 cm)	6.66	20

\*Additional linear and rectangular sizes available through Linear Options™, Daltile's linear cutting service. Visit [www.daltileproducts.com/lineartileoptions](http://www.daltileproducts.com/lineartileoptions) for sizes and order information.

## RESIDENTIAL

### RESIDENTIAL USAGE

FLOOR	WALL	COUNTERTOPS	EXTERIOR PATIOS	EXTERIOR POOL DECKS
<b>F</b>	<b>W</b>	<b>C</b>	<b>EP</b>	<b>ED</b>

## COMMERCIAL

### COMMERCIAL APPLICATION

	LIGHT COMMERCIAL	COMMERCIAL	COMMERCIAL EXTERIORS
Floors**	◆	◆	
Walls/Backsplashes	◆	◆	◆
Counters	◆	◆	◆
Pool Decking			
Pool Linings	◆	◆	◆

Suitable for exterior walls in freezing and non-freezing climates when proper installation methods are followed.

\*\*Unpolished only

Professional  
TILE SOLUTIONS



TRU-EDGE



daltile  
greenworks™  
ENVIRONMENTAL LEADERSHIP THAT WORKS

Printed using soy inks.

## TRIM

TYPE	SIZE	PIECES PER CARTON
Bullnose® S-43C9 (Light Polished & Unpolished)	3" x 12"	33

\*Bullnose also available in horizontal design in Light Polished & Unpolished in all colors via Special Order.

## SHADE VARIATION

**MEDIUM (V2)**  
Color variation within each tile.

## INSTALLATION

THICKNESS	GROUT JOINT RECOMMENDATION
3/8"	1/8" (3/16" when rectangular sizes are used in a staggered brick-joint pattern, where the overlap does not exceed 33%)

## SLIP RESISTANCE (WET) : 2 & 3

The higher the rating, the higher the slip resistance.

1 < .50

2 .50 - .59 (Light Polished)

3 ≥ .60 (Unpolished)

## TEST RESULTS

	ASTM#	RESULTS
Water Absorption	C373	< 0.5%
Breaking Strength	C648	> 450 lbs
Scratch Hardness	MOHS	8.0
Chemical Resistance	C650	Resistant
Coefficient of Friction (Unpolished)	C1028	Wet: ≥ 0.60 Dry: ≥ 0.70
Coefficient of Friction (Light Polished)	C1028	Wet: ≥ 0.50 Dry: ≥ 0.70

## NOTES

Special care should be taken when grouting with dark pigmented colors. A grout release is recommended to prevent finely powdered pigments from lodging in the pores of the surface. Use of a latex modified thin-set is recommended for installation.

Since there are variations in all fired ceramic products, tile and trim supplied for your particular installation may not match these samples. Final color selection should be made from actual tiles and trim and not from tile and trim samples or color reproductions. Manufactured in accordance with ANSI A 137.1 standards.

For additional information, refer to "Factors to Consider" at [www.daltile.com/CommercialFactors](http://www.daltile.com/CommercialFactors).

Water, oil, grease, etc. create slippery conditions. Floor applications with exposure to these conditions require extra caution in product selection. Not for use on ramps.



7834 C. F. Hawn Freeway | Dallas, TX 75217 | 214.398.1411 800.933.TILE  
For more information about Daltile products and services, visit our website at [daltileproducts.com](http://daltileproducts.com)

©2009 Daltile Corporation (11/09) SSPTSFA009

# Time 2.0

## Typical Uses

Time/2.0 through body porcelain tile is ADA compliant and appropriate for all residential and commercial wall & countertop applications. Suitable for commercial areas such as restaurants, hotels and retail spaces. This Florida Tile product will contribute to USGBC LEED points and the ANSI approved NAHB Green Building Points.

Typical Properties <sup>1</sup> (Floor)	ASTM	ANSI	Results Natural	Textured	Polished
Coefficient of Friction <sup>2</sup>	C-1028	Varies	Dry 0.8 Wet 0.6	Dry 0.8 Wet 0.7	Dry 0.6 Wet 0.4
DCOF AcuTest		>=0.42	Pass	Pass	N/A
Durability Classification <sup>3</sup>	C1027	N/A	P1	P1	P1
Surface Scratch Hardness	Mohs Scale	N/A	7 Mohs	7 Mohs	7 Mohs
Break Strength	C-648	250 lbs.	850 lbs. avg	850 lbs. avg	750 lbs. avg
Water Absorption	C-373	<0.5%	<0.5%	<0.5%	<0.5%
Thickness			10.5mm	10.5mm	10mm




<sup>1</sup> These values vary from lot to lot.

<sup>2</sup> Dry & Wet values from independent test laboratory.

<sup>3</sup> P1 is the highest durability rating an unglazed tile can achieve and should be suitable for the most demanding applications.

## Field Tile

Nominal Size <sup>1</sup>	Metric (cm)	Pcs./Sq Ft <sup>2</sup>
12" x 12"	30x30	1
6" x 24"	15x60	1
12" x 24"	30x60	.5
24" x 24"	60x60	.25

Trim Name	Shape	SKU	Nominal Size
Bullnose		P43C9	3"x12"
Cove Base		P36C9	6"x12"
Cove Base Corner		PB3169	6"x1"

## Color Variations

Color reproductions in this printed piece may vary from actual tile colors. Final selection should be made from actual tile samples.



V2 = Slight Variation  
Distinguishable differences in texture and/or pattern with similar colors

# Time 2.0

Color	12x12 natural	6x24 natural	12x24 natural	24x24 natural	M12 natural	12x12 polished	12x24 polished	24x24 polished	12x24 textured	12x12 textured	P43C9 polished	P43C9 natural	P36C9 & PB3169 natural
	10.5mm					10mm			10.5mm				
snow	T21B1	T21B1	T21B1	T21B1	T21B1	T2161	T2161	<b>T2161*</b>	T217B1	T217B1	T2161	T21B1	T21B1
white	T22B1	T22B1	T22B1	T22B1	T22B1		<b>T2261*</b>	<b>T2261*</b>				T22B1	T22B1
cream	T23B1	T23B1	T23B1	T23B1	T23B1	T2361	T2361	<b>T2361*</b>	T237B1	T237B1	T2361	T23B1	T23B1
beige	T24B1	T24B1	T24B1	T24B1	T24B1	T2461	T2461	<b>T2461*</b>	T247B1	T247B1	T2461	T24B1	T24B1
dove	T25B1	T25B1	T25B1	T25B1	T25B1		<b>T2561*</b>	<b>T2561*</b>				T25B1	T25B1
silver	T26B1	T26B1	T26B1	T26B1	T26B1	T2661	T2661	<b>T2661*</b>	T267B1	T267B1	T2661	T26B1	T26B1
grey	T27B1	T27B1	T27B1	T27B1	T27B1		<b>T2761*</b>	<b>T2761*</b>				T27B1	T27B1
carbon	T28B1	T28B1	T28B1	T28B1	T28B1	T2861	T2861	<b>T2861*</b>	T287B1	T287B1	T2861	T28B1	T28B1
black	T29B1	T29B1	T29B1	T29B1	T29B1	T2961	T2961	<b>T2961*</b>	T297B1	T297B1	T2961	T29B1	T29B1

\* These items are special order and not in stock.

# FASHION ACCENTS™

## DECORATIVE ACCENTS

wall • backsplash • decorative

*ShimmerSeries*



ILLUMINI UMBER F016  
5/8 x 3 Random Mosaic

### RESIDENTIAL USAGE

FLOORS	WALLS	COUNTERTOPS	EXTERIOR PATIOS	EXTERIOR POOL DECKS
F*	W			

\* Keltic Knots only

### COMMERCIAL USAGE

	INTERIOR			EXTERIOR	
	RESIDENTIAL	LIGHT COMMERCIAL	COMMERCIAL	RESIDENTIAL	COMMERCIAL
Floors/Patios*		✓			
Walls/Backsplashes	✓	✓	✓	✓	✓
Countertops					
Pool Decking					
Pool Linings					

Suitable for non-freezing climates when proper installation methods are followed.

\*Keltic Knots only

### SHADE VARIATION



### INSTALLATION

THICKNESS	GROUT JOINT RECOMMENDATION
Varies by accent strip	Varies by accent strip

WASHER - <http://www.whirlpool.com/laundry-1/laundry-2/washers-3/-/%5BFW87HEDW%5D-1022124/WFW87HEDW/>

DRYER -

<http://www.whirlpool.com/webapp/wcs/stores/servlet/WHORNAjaxCatalogSearchView?storeId=10211&catalogId=10561&langId=-1&beginIndex=0&searchTerm=WGD87HEDW>

CARPET - <http://www.royaltycarpetmills.com/carpet/diva#R01910014>

TUB - <http://shop.ferguson.com/product/American-Standard-2766014-White-901067?Ntt=AMERICAN+STANDARD&N=91+3003808>

TUB FILLER - [http://shop.ferguson.com/product/Brizo-DT70175DR70100-Chrome-848354?Ntt=DT70175PC&Ns=AvailabilitySort%7Co%7C%7CPrimary\\_Finish%7C1%7C%7CSort\\_Order%7C1&term=DT70175PC](http://shop.ferguson.com/product/Brizo-DT70175DR70100-Chrome-848354?Ntt=DT70175PC&Ns=AvailabilitySort%7Co%7C%7CPrimary_Finish%7C1%7C%7CSort_Order%7C1&term=DT70175PC)

COUNTER TOP - <http://www.caesarstoneus.com/en/The-Catalog/Pages/2230%20Linen.aspx>

SINK - <http://www.nameeks.com/product/Bathroom-Sink/Scarabeo-8031/80.html>

FAUCET -

[http://shop.ferguson.com/decor/product.pl?Ntt=D65480LFPC&Ns=AvailabilitySort%7Co%7C%7CPrimary\\_Finish%7C1%7C%7CSort\\_Order%7C1&term=D65480LFPC&mid=283045&fh=Polished%20Chrome](http://shop.ferguson.com/decor/product.pl?Ntt=D65480LFPC&Ns=AvailabilitySort%7Co%7C%7CPrimary_Finish%7C1%7C%7CSort_Order%7C1&term=D65480LFPC&mid=283045&fh=Polished%20Chrome)

HAND SHOWER -

[http://shop.ferguson.com/decor/product.pl?Ntt=D88875PC&Ns=AvailabilitySort%7Co%7C%7CPrimary\\_Finish%7C1%7C%7CSort\\_Order%7C1&term=D88875PC&mid=321325&fh=Polished%20Chrome](http://shop.ferguson.com/decor/product.pl?Ntt=D88875PC&Ns=AvailabilitySort%7Co%7C%7CPrimary_Finish%7C1%7C%7CSort_Order%7C1&term=D88875PC&mid=321325&fh=Polished%20Chrome)

RAINHEAD -

[http://shop.ferguson.com/decor/product.pl?Ntt=D81375PC&Ns=AvailabilitySort%7Co%7C%7CPrimary\\_Finish%7C1%7C%7CSort\\_Order%7C1&term=D81375PC&mid=328003&fh=Polished%20Chrome](http://shop.ferguson.com/decor/product.pl?Ntt=D81375PC&Ns=AvailabilitySort%7Co%7C%7CPrimary_Finish%7C1%7C%7CSort_Order%7C1&term=D81375PC&mid=328003&fh=Polished%20Chrome)

\*\*\*ALL BATHROOMS HAVE THE SAME TOILET

TOILET BOWL - [http://shop.ferguson.com/decor/product.pl?Ntt=K4199-o&Ns=AvailabilitySort%7Co%7C%7CPrimary\\_Finish%7C1%7C%7CSort\\_Order%7C1&term=K4199-o&mid=272160&fh=White](http://shop.ferguson.com/decor/product.pl?Ntt=K4199-o&Ns=AvailabilitySort%7Co%7C%7CPrimary_Finish%7C1%7C%7CSort_Order%7C1&term=K4199-o&mid=272160&fh=White)

TOILET TANK - [http://shop.ferguson.com/decor/product.pl?Ntt=K4467-o&Ns=AvailabilitySort%7Co%7C%7CPrimary\\_Finish%7C1%7C%7CSort\\_Order%7C1&term=K4467-o&mid=280754&fh=White](http://shop.ferguson.com/decor/product.pl?Ntt=K4467-o&Ns=AvailabilitySort%7Co%7C%7CPrimary_Finish%7C1%7C%7CSort_Order%7C1&term=K4467-o&mid=280754&fh=White)

SEAT - [http://shop.ferguson.com/decor/product.pl?Ntt=K4636-o&Ns=AvailabilitySort%7Co%7C%7CPrimary\\_Finish%7C1%7C%7CSort\\_Order%7C1&term=K4636-o&mid=41830&fh=White](http://shop.ferguson.com/decor/product.pl?Ntt=K4636-o&Ns=AvailabilitySort%7Co%7C%7CPrimary_Finish%7C1%7C%7CSort_Order%7C1&term=K4636-o&mid=41830&fh=White)

# JUNIOR MASTER

CARPET  
- ROYALTY "DIVA"  
- color marema

CEILING FAN  
- LED light  
- oil rubbed bronze  
- 52"

SWITCHED OUTLETS

BATH PENDANTS (X2)  
- GEORGE KOVACS "COUNTER WEIGHT"  
- dark bronze, white linen shade  
- 8"Wx13"H

FLUSH MOUNT (X3)  
- TECH LIGHTING "FINCH"  
- LED, dark bronze  
- 2 bath, 1 closet  
- 12"diam.

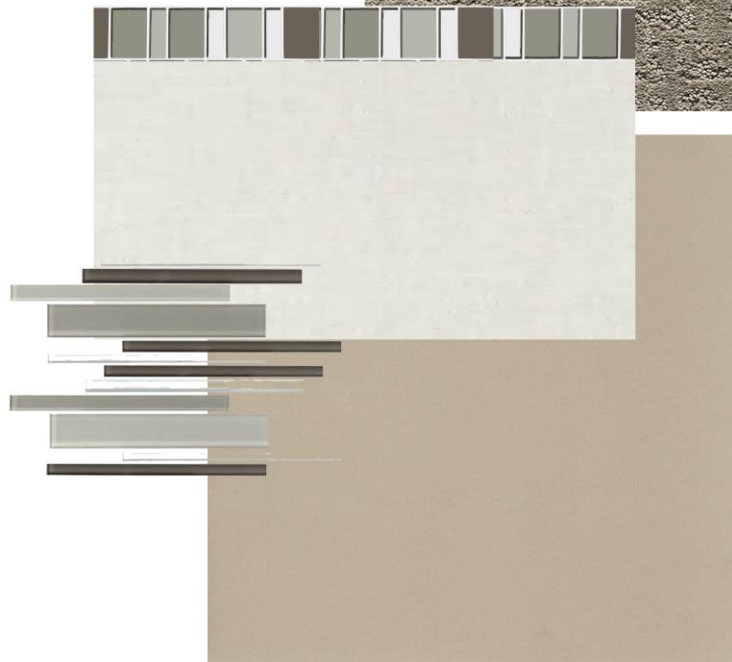
FLOOR TILE  
- FLORIDA TILE "TIME 2.0"  
- beige, 24"x24"

WAINSCOT & SHOWER  
- ARIZONA TILE "TOUCH"  
- snow, 12"x24"

SHOWER PAN  
- ARIZONA TILE "TOUCH"  
- snow, 2"x2" mosaic

WAINSCOT GLASS ACCENT  
- DALTILE "COLOR WAVE"  
- cashmere blend  
- block mosaic

SHOWER NICHE GLASS ACCENT  
- DALTILE "COLOR WAVE"  
- cashmere blend  
- interlocking mosaic (linear)



#### CABINETS

- floating vanity knotty adler, raisin stain
- wide stile and rail
- full extension soft close drawer guides
- soft close doors

#### COUNTER TOPS

- (& shower bench top)
- CAESARSTONE, color: linen
- 3cm thickness, eased edges

#### SINK (X2)

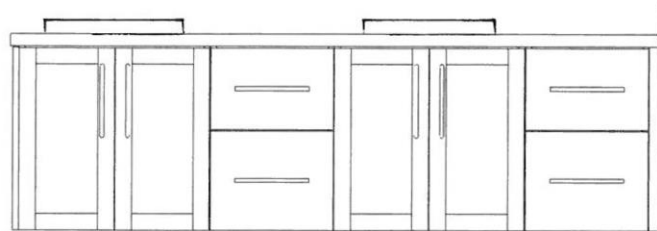
- NAMEEKS "BUCKET"
- white
- 16" diam. x 2.5"H

#### FAUCET (X2)

- WATERMARK DESIGNS "BROOKLYN"
- satin nickel

#### SHOWER HEAD

- WATERMARK DESIGNS "BROOKLYN"
- satin nickel



CARPET - <http://www.royaltycarpetmills.com/carpet/diva#Ro1910014>

COUNTER TOP - <http://www.caesarstoneus.com/en/The-Catalog/Pages/2230%20Linen.aspx>

SINK - <http://www.nameeks.com/product/Bathroom-Sink/Scarabeo-8810.html>

FAUCET - <http://watermark-designs.com/collection-model-detail/brooklyn-31/bath-lavatory-fittings/two-handle/31-2-2-1/>

SHOWERHEAD - <http://watermark-designs.com/collection-model-detail/brooklyn-31/shower-sets/thermostatic/31-6-4/>

# ARIZONA TILE

## TOUCH SERIES



Touch Sunset



Touch Glow



Touch Pearl



Touch Snow



Touch Summer



Touch Sunset

### PRODUCT TYPE

Rectified Glazed Porcelain  
Digital Print Technology

### MANUFACTURER

Mediterranea

### COLORS

Touch Glow  
Touch Pearl  
Touch Snow  
Touch Summer  
Touch Sunset

### SIZES

12"×12"×8mm  
12"×24"×8mm  
2"×2" Mosaic

### RECOMMENDED USES

Commercial & Residential  
Interior & Exterior  
Floor & Wall  
Backsplashes  
Countertops  
Fireplaces  
Tub Surrounds & Showers  
Vanities

P.E.I. RATING: 4

FROSTPROOF: Yes

STATIC C.O.F. DRY: 0.83

STATIC C.O.F. WET: 0.63

DYNAMIC C.O.F. WET: 0.58

### TRIM

3"×12" SBN

The Touch Series is a rectified, glazed porcelain manufactured in the United States. Inspired by the rich textures of commercial textiles, this series has a clean look and offers a simplistic, modern appeal. The Touch Series contains 60% pre-consumer recycled content. It is available in five colors and provides an industrial and commercial aesthetic that is now available for residential installations as well. Because this material is a porcelain product, maintenance risks involved with actual stone are eliminated. When installing this tile with a staggered joint, the manufacturer recommends offset should not exceed 25%. This series is suitable for residential and commercial applications.

The Touch Series is Green Squared<sup>SM</sup> Certified. All products bearing the Green Squared<sup>SM</sup> Certified certification mark have been assessed for conformance to the ANSI A138.1 standard by a recognized third-party certification body. Green Squared<sup>SM</sup> is a certification program developed by the Tile Council of North America (TCNA) as part of its ongoing initiative to support the efforts of producers, purchasers and policy makers to improve the environmental and social sustainability of products and services, based on either established and/or advanced scientific principles, practices, materials and standards.



Produced with DIGITAL PRINT TECHNOLOGY

SIZE	SF/PIECE	PIECES/BOX	SF/BOX	BOXES/PALLET	SF/PALLET
12"×12"×8mm	0.9793	10	9.793	60	587.58
12"×24"×8mm	1.9689	8	15.7512	32	504.0384
2"×2" Mosaic	0.9555	10 sheets	9.555	45	429.975
3"×12" SBN	0.2423	15	3.634	85	308.89

Please view actual material when making your selection, as the images on this page are only representative.  
Standard packaging quantities are noted above, but variances may occur.

[www.arizonatile.com](http://www.arizonatile.com)

## Time 2.0

### Typical Uses

Time/2.0 through body porcelain tile is ADA compliant and appropriate for all residential and commercial wall & countertop applications. Suitable for commercial areas such as restaurants, hotels and retail spaces. This Florida Tile product will contribute to USGBC LEED points and the ANSI approved NAHB Green Building Points.

Typical Properties <sup>1</sup> (Floor)	ASTM	ANSI	Results Natural	Textured	Polished
Coefficient of Friction <sup>2</sup>	C-1028	Varies	Dry 0.8 Wet 0.6	Dry 0.8 Wet 0.7	Dry 0.6 Wet 0.4
DCOF AcuTest		>=0.42	Pass	Pass	N/A
Durability Classification <sup>3</sup>	C1027	N/A	P1	P1	P1
Surface Scratch Hardness	Mohs Scale	N/A	7 Mohs	7 Mohs	7 Mohs
Break Strength	C-648	250 lbs.	850 lbs. avg	850 lbs. avg	750 lbs. avg
Water Absorption	C-373	<0.5%	<0.5%	<0.5%	<0.5%
Thickness			10.5mm	10.5mm	10mm




<sup>1</sup> These values vary from lot to lot.

<sup>2</sup> Dry & Wet values from independent test laboratory.

<sup>3</sup> P1 is the highest durability rating an unglazed tile can achieve and should be suitable for the most demanding applications.

### Field Tile

Nominal Size <sup>1</sup>	Metric (cm)	Pcs./Sq Ft <sup>2</sup>
12" x 12"	30x30	1
6" x 24"	15x60	1
12" x 24"	30x60	.5
24" x 24"	60x60	.25

Trim Name	Shape	SKU	Nominal Size
Bullnose		P43C9	3"x12"
Cove Base		P36C9	6"x12"
Cove Base Corner		PB3169	6"x1"

### Color Variations

Color reproductions in this printed piece may vary from actual tile colors. Final selection should be made from actual tile samples.



V2 = Slight Variation  
Distinguishable differences in texture and/or pattern with similar colors

## Time 2.0

Color	12x12 natural	6x24 natural	12x24 natural	24x24 natural	M12 natural	12x12 polished	12x24 polished	24x24 polished	12x24 textured	12x12 textured	P43C9 polished	P43C9 natural	P36C9 & PB3169 natural
	10.5mm					10mm			10.5mm				
snow	T21B1	T21B1	T21B1	T21B1	T21B1	T2161	T2161	<b>T2161*</b>	T217B1	T217B1	T2161	T21B1	T21B1
white	T22B1	T22B1	T22B1	T22B1	T22B1		<b>T2261*</b>	<b>T2261*</b>				T22B1	T22B1
cream	T23B1	T23B1	T23B1	T23B1	T23B1	T2361	T2361	<b>T2361*</b>	T237B1	T237B1	T2361	T23B1	T23B1
beige	T24B1	T24B1	T24B1	T24B1	T24B1	T2461	T2461	<b>T2461*</b>	T247B1	T247B1	T2461	T24B1	T24B1
dove	T25B1	T25B1	T25B1	T25B1	T25B1		<b>T2561*</b>	<b>T2561*</b>				T25B1	T25B1
silver	T26B1	T26B1	T26B1	T26B1	T26B1	T2661	T2661	<b>T2661*</b>	T267B1	T267B1	T2661	T26B1	T26B1
grey	T27B1	T27B1	T27B1	T27B1	T27B1		<b>T2761*</b>	<b>T2761*</b>				T27B1	T27B1
carbon	T28B1	T28B1	T28B1	T28B1	T28B1	T2861	T2861	<b>T2861*</b>	T287B1	T287B1	T2861	T28B1	T28B1
black	T29B1	T29B1	T29B1	T29B1	T29B1	T2961	T2961	<b>T2961*</b>	T297B1	T297B1	T2961	T29B1	T29B1

\* These items are special order and not in stock.



## COLOR WAVE™ GLASS MOSAICS

**SOFT CASHMERE INTERLOCKING  
MOSAIC CW22**  
Classic Blends  
Pre-Consumer: 30.0%  
Post-Consumer: 7.5%  
Origin: China

SOFT CASHMERE CW22

### SIZES

		SQ. FT. CARTON	PCS. PER CARTON
3 x 6 Field Tile	3" x 6" (7.30 cm x 14.80 cm)	4.00	32
2 x 12 Liner	2" x 12" (6.90 cm x 32.30 cm)	10.00	60
1 x 6 Straight-joint Liner (Mesh-mounted)	11-7/8" x 11-7/8" (29.90 cm x 29.90 cm)	10.00	10
2 x 1 Brick-joint Mosaic (Mesh-mounted)*	12-7/8" x 11-7/8" (34.80 cm x 32.30 cm)	10.00	10
1 x 1 Mosaic* (Mesh-mounted)	11-7/8" x 11-7/8" (29.90 cm x 29.90 cm)	10.00	10
Random Interlocking Mosaic (Mesh-mounted)*	11-7/16" x 15-5/8" (27.94 cm x 39.37 cm)	10.00	10
3" Block Random Mosaic (Mesh-mounted)**	11-3/4" x 11-3/4" (29.80 cm x 29.80 cm)	9.60	10

\* Random Interlocking and 2 x 1 mosaics available only in Classic Blends.  
\*\* 3" Block Random Mosaic available in Classic Blocks only.

### BLEND/BLOCK COMPONENTS

CW21 25% Feather White CW02, 25% Smoked Pearl CW17,  
25% Powder Puff CW03, 25% Silver Mink CW04  
CW22 25% Casual Tan CW07, 25% Silver Mink CW 04, 25% Feather White CW02,  
25% Kinetic Khaki CW09  
CW23 25% Feather White CW02, 25% Tango Tan CW06, 25% Suede Shoes CW10,  
25% Casual Tan CW07  
CW24 25% Suede Shoes CW10, 25% Whipped Cream CW05,  
25% Tango Tan CW06, 25% Green Parade CW15  
CW25 20% Morning Sun P650\*, 20% Honeycomb P651\*, 20% Tea Leaves P657\*,  
20% Cactus P660\*, 20% Green Leaf P662\*  
CW26 25% Olive Oil GR08\*, 40% Whipped Cream CW05, 10% Root Beer CW11,  
25% Kinetic Khaki CW09  
CW27 25% Twilight Blue CW14, 33% Whisper Glen CW12, 33% Blue Lagoon CW13  
CW28 25% Ice White CW01, 25% Nine Iron CW19  
25% Smoked Pearl CW17, 25% Top Hat CW18

\*Colors unique to blend - not stocked. Colors available via special order only, with  
extended lead time

### SHADE VARIATION

BLEND/ BLOCKS	 <b>RANDOM (V4)</b> Considerable variation from tile to tile
SOLIDS	 <b>MEDIUM (V2)</b> Color variation within each tile



By their very design, Daltile products can help make it easier for you to earn LEED® points  
and/or points towards many industry leading green home building programs. From using  
recycled material content to establishing manufacturing facilities within 500 miles of your  
project, we help ensure you don't have to compromise your design to be environmentally  
conscious. For detailed information, visit [daltilegreenworks.com](http://daltilegreenworks.com).

### RESIDENTIAL USAGE

FLOORS	WALLS	COUNTERTOPS	EXTERIOR PATIOS	EXTERIOR POOL DECKS
				

CW30 Red Hot and CW32 Capri Breeze are not recommended for exterior use.  
Suitable for exterior walls in freezing and non-freezing climates when proper installation  
methods are followed.

### COMMERCIAL USAGE

	INTERIOR			EXTERIOR *	
	LIGHT RESIDENTIAL	COMMERCIAL	COMMERCIAL	RESIDENTIAL	COMMERCIAL
Floors/Patios					
Walls/Backsplashes**	✓	✓	✓	✓	✓
Countertops					
Pool Decking					
Pool Linings	✓	✓	✓	✓	✓

\*CW30 Red Hot and CW32 Capri Breeze are not recommended for exterior use.  
\*\*Suitable for exterior walls in freezing and non-freezing climates when proper  
installation methods are followed.

### INSTALLATION

THICKNESS	GROUT JOINT RECOMMENDATION
5/16"	Approximately 1/8"

### TEST RESULTS

	ASTM#	RESULT
Water Absorption	C373	< 0.5%
Breaking Strength	C648	> 100 lbs
Scratch Hardness	MOHS	4.0
Chemical Resistance	C650	Resistant

### NOTES

Strong random shading enhances the beauty of this product. To achieve optimal  
results, tile should be selected from multiple cartons and shading arrangement planned  
prior to installation.

Since there is shade variation in all glass products, the tile supplied for your particular  
installation may not match these samples. Final selection should be made from actual  
tiles and not from tile samples or color reproductions. Manufactured in accordance  
with ANSI A137.2 standards.

For additional information, refer to "Factors to Consider" at [daltile.com/Factors](http://daltile.com/Factors).



DESIGN WITH CONFIDENCE™

7834 C. F. Hawn Freeway | Dallas, Texas 75217 | 800.933.TILE

For more information about Daltile products and services, visit our website at [DALTILE.COM](http://DALTILE.COM).  
© 2014 Dal-Tile Corporation (11/14)

# GUEST BEDROOMS



## CEILING FAN

- "KEWL"
- black, 52"

## CARPET

- ROYALTY "DIVA"
- color marema

## RECESSED CANS

- 5" recessed cans
- (X4) each bedroom

# GUEST BATH 110

## VANITY LIGHT

- MINKA LAVERY "CAMDEN SQUARE"
- aged iron finish, 24"W

## CABINETRY

- CURRENT wide stile and rail
- floating vanity, knotty adler, woodland stain
- 3/4 extension, soft close drawer guides

## COUNTER TOPS

- CAESARSTONE, color: linen
- 3cm thickness, eased edges

## SINK

- NAMEEKS "MIKY"
- undermount, white, 16"sq.

## FAUCET & SHOWER HEAD

- BRIZO "ODIN"

FLOOR TILE & SHOWER PAN  
ARIZONA TILE "BASALTINA" -  
ivory, 24"x24" / 2"x2" mosaic -

WAINSCOT & SHOWER  
BEDROSIANS "EPIC" -  
white, 4"x40" -

WAINSCOT & NICHE GLASS ACCENT  
EMSER TILE "VOGUE" -  
taupe matte, 2"x16" -



# GUEST BATH 112

## SCONCES (X2)

- SONNEMAN "METRO"
- black, white linen shade, 24"H



## CABINETRY

- CURRENT wide stile and rail
- floating vanity, knotty adler, woodland stain
- 3/4 extension, soft close drawer guides
- soft close doors

## COUNTER TOPS

- CAESARSTONE, color: linen
- 3cm thickness, eased edges

## SINK

- NAMEEKS "ZEFIRO"
- vessel, white, 27"Wx14"Dx7"H

## FAUCET & SHOWER HEAD

- BRIZO "ODIN"

## FLOOR TILE & SHOWER PAN

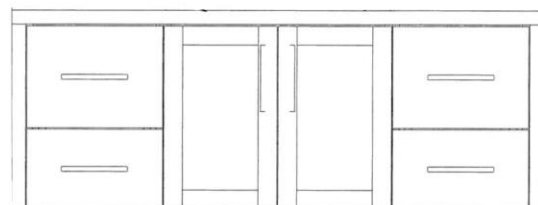
- ARIZONA TILE "BASALTINA"
- ivory, 24"x24" / 2"x2" mosaic

## SHOWER SURROUND

- BEDROSIANS "EPIC"
- white, 8"x40"

## BACK SPLASH & NICHE ACCENT

- MARAZZI "MIDDLETON SQUARE"
- glazed ceramic
- steeple gray 4"x13"



CARPET - <http://www.royaltycarpetmills.com/carpet/diva#Ro1910014>

COUNTER TOP - <http://www.caesarstoneus.com/en/The-Catalog/Pages/2230%20Linen.aspx>

BATH 110 SINK - <http://www.nameeks.com/product/Bathroom-Sink/Scarabeo-8089.html>

BATH 110 FAUCET - <http://shop.ferguson.com/product/brizo-D65375LF-brilliance-brushed-nickel-768772?tb=&Ntt=ODIN&term=ODIN>

BATH 112 SINK - <http://www.nameeks.com/product/Bathroom-Sink/Scarabeo-8206.html>

BATH 112 FAUCET - <http://shop.ferguson.com/product/brizo-D65475LF-brilliance-brushed-nickel-768775?tb=&Ntt=ODIN&term=ODIN>

SHOWERHEAD - [http://shop.ferguson.com/product/Brizo-DT60275-Brilliance-Brushed-Nickel-768828?Ntt=ODIN&Ns=AvailabilitySort%7Co%7C%7CPrimary\\_Finish%7C1%7C%7CSort\\_Order%7C1&term=ODIN](http://shop.ferguson.com/product/Brizo-DT60275-Brilliance-Brushed-Nickel-768828?Ntt=ODIN&Ns=AvailabilitySort%7Co%7C%7CPrimary_Finish%7C1%7C%7CSort_Order%7C1&term=ODIN)

## ARIZONA TILE

## BASALTINA SERIES



Basaltina Ivory



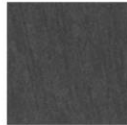
Basaltina Ivory



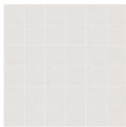
Basaltina Mid Grey



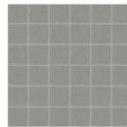
Basaltina Mocha



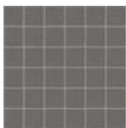
Basaltina Nero



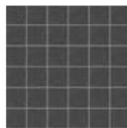
Basaltina Ivory Mosaic



Basaltina Mid Grey Mosaic



Basaltina Mocha Mosaic



Basaltina Nero Mosaic

### PRODUCT TYPE

Rectified Color Body Porcelain

### COLORS

Basaltina Ivory  
Basaltina Mid Grey  
Basaltina Mocha  
Basaltina Nero

### FINISHES

Matte  
Semi-Polished

### SIZES

12"×24"×10mm Rectified  
24"×24"×10mm Rectified  
\*11-1/2"×23-5/8" Stack  
\*2"×2" Mosaic  
\*matte finish only

C.O.F. DRY: 0.68 (matte)

C.O.F. WET: 0.66 (matte)

DYNAMIC C.O.F. WET: 0.44 (matte)

DYNAMIC C.O.F. WET: 0.45 (semi-polished)

P.E.I. RATING: 5

FROSTPROOF: Yes

### TRIM

3"×12" SBN  
\*6"×12" Cove Base  
\*1"×6" Cove In  
\*1"×6" Cove Out

### RECOMMENDED USES

Commercial & Residential  
Interior & Exterior  
Floor & Wall  
Backsplashes  
Countertops  
Fireplaces  
Tub Surrounds & Showers  
Vanities

Basaltina is a rectified color body porcelain. It provides a clean, modern look to any environment. It is available in two sizes and two finishes, plus a stack and numerous trim pieces. Because this material is a porcelain product, minimal maintenance is required. When installing rectangular tiles 15 inches or longer with a staggered joint, it is recommended that the offset not exceed 33%. This series is suitable for residential and commercial applications.



Basaltina Ivory Stack



Basaltina Mid Grey Stack



Basaltina Mocha Stack



Basaltina Nero Stack

SIZE	CONVERSION/PC.	PIECES/BOX	SF/BOX	BOXES/PALLET	SF/PALLET
12"×24"×10mm	1.9368	8	15.4944	40	619.7760
24"×24"×10mm	3.8736	4	15.4944	40	619.7760
2"×2" Mosaic	0.9385	11	10.3253	54	594
Stack	1.89	5	9.45	54	270
SBN	N/A	40	N/A	36	1,440
Cove Base	N/A	20	N/A	45	900
Cove In/Out	N/A	116	N/A	N/A	N/A

Standard packaging quantities are noted above, but variances may occur.

Please view actual material when making your selection, as the images on this page are only representative.

[www.arizonatiles.com](http://www.arizonatiles.com)

# Epic Glazed Color Body Porcelain



White



CRDEPWH440 - 4" x 40"  
CRDEPWH840 - 8" x 40"

## Sizes

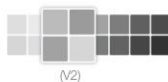
Shape	Size	Sq Ft/Ctn	Pieces/Ctn
	4"x40" Field Tile (10 cm x 100 cm)	10.76	10
	8"x40" Field Tile (20 cm x 100 cm)	10.76	5

## Product Information

Tile Thickness: 3/8"

Recommended Grout Joint: 3/16"

## Shade Variation



Overlap should not exceed 33%

## Icons



Made in Italy



Glazed Color  
Body Porcelain



Rectified Edge



Ink Jet



## Technical Specifications

Description	Results	ASTM#
Water Absorption	≤ 0.50%	C373
PEI Rating	4	C1027
MOHS (Scratch Resistant)	N/A	MOHS
Frost Resistant	Unaffected	C1026
Breaking Strength	≥ 250 lbs	C648
Chemical Resistant	Unaffected	C650
COF AcuTest	≥ 0.42	AcuTest

## Application

	Interior			Exterior	
	Residential	Light Commercial	Commercial	Residential	Commercial
Floors	•	•	•		
Walls / Backsplashes	•	•	•	•	•
Countertops	•	•	•	•	•
Showers	•	•	•	•	•
Pool Decking					
Pool Lining	•	•	•	•	•

www.bedrosians.com

MKTTERCRDEPI

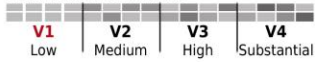


**VOGUE™ - Glass**  
**Taupe Matte**  
 GLASS WALL TILE  
 2" x 16" W87VOGUTA0216M

2" x 16"



Color shade variations



#### APPLICATIONS

Product	Floor	Wall	Counter	Residential	Commercial Light	Commercial Heavy	Outdoor use	Go Linear	Green Friendly
VOGUE™ - Glass Taupe Matte		X		X	X	X			

**GROUT JOINT  
 RECOMMENDATION**  
 Approximately 3/16"

# MIDDLETON SQUARE™

## GLAZED CERAMIC WALL TILE

Oxford White



Windsor Cream



Latte



Urban Mist



Steeple Gray



Black Bean



### Sizes



4-1/4"x12-7/8"  
5/16" (8mm)

### Trims



4-1/4"x12-7/8"  
Bullnose

Thickness	4-1/4"x12-7/8" 5/16" (8mm)	4-1/4"x12-7/8" Bullnose
Oxford White (White)	MS40412MODA1P2	MS40S44C9MA1P2
Windsor Cream (Almond)	MS41412MODA1P2	MS41S44C9MA1P2
Latte (Taupe)	MS42412MODA1P2	MS42S44C9MA1P2
Urban Mist (Gray)	MS43412MODA1P2	MS43S44C9MA1P2
Steeple Gray (Dark Gray)	MS44412MODA1P2	MS44S44C9MA1P2
Black Bean (Black)	MS45412MODA1P2	MS45S44C9MA1P2

## APPLICATIONS

	Institutional	Commercial	Residential
Floors			
Walls & Backsplashes	•	•	•
Countertops			

Wall tile suitable for exterior applications in non-freezing climates only when proper installation methods are followed.



Wall  
Tile



Trim  
Available



Low  
Variation



Pre-Consumer  
Recycled Content



No  
VOC



## PERFORMANCE CHARACTERISTICS

	Moisture Absorption	Breaking Strength	MOH'S	Chemical Resistance
Wall Tile	< 20.00%	120 - 230 lbs.	4-6	Resistant

**MARAZZI**  
DARE TO BE BOLD™



# POWDER BATH

PENDANT  
- ELAN "NIU"

CABINETRY  
- CURRENT TAKASE TEAK  
- builder grade textured melamine  
- floating vanity  
- slab door fronts  
- soft close doors

COUNTER TOPS  
- CAESARSTONE, color: linen  
- 3cm thickness, eased edges  
- frame top & bottom of vanity

SINK  
- KOHLER "DEMI-LAV"  
- self-rimming, white, 16"Wx14"D

FAUCET  
- BRIZO "VIRAGE"  
- brushed nickel

BACK SPLASH  
- EMSER TILE "SEMPLICE", beveled  
- glazed ceramic, glossy white, 4"x12"



SINK - [http://shop.ferguson.com/product/Kohler-K-2833-White-98368?Ntt=K2833&Ns=AvailabilitySort%7Co%7C%7CPrimary\\_Finish%7C1%7C%7CSort\\_Order%7C1&term=K2833](http://shop.ferguson.com/product/Kohler-K-2833-White-98368?Ntt=K2833&Ns=AvailabilitySort%7Co%7C%7CPrimary_Finish%7C1%7C%7CSort_Order%7C1&term=K2833)

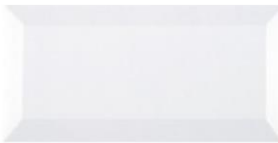
FAUCET -

[http://shop.ferguson.com/decor/product.pl?Ntt=D6543oLFBN&Ns=AvailabilitySort%7Co%7C%7CPrimary\\_Finish%7C1%7C%7CSort\\_Order%7C1&term=D6543oLFBN&mid=271292&fh=Brilliance%2oBrushed%2oNickel](http://shop.ferguson.com/decor/product.pl?Ntt=D6543oLFBN&Ns=AvailabilitySort%7Co%7C%7CPrimary_Finish%7C1%7C%7CSort_Order%7C1&term=D6543oLFBN&mid=271292&fh=Brilliance%2oBrushed%2oNickel)



#### APPLICATIONS

Product	Floor	Wall	Counter	Residential	Commercial Light	Commercial Heavy	Outdoor use	Go Linear	Green Friendly
SEMPlice™ Glossy White Bevelled Edge		X	X	X	X	X			



**SEMPlice™**  
Glossy White Bevelled Edge  
GLAZED WALL TILE



8431 Santa Monica Boulevard  
Los Angeles, California 90069

Phone: 323. 650. 2000  
Fax: 323. 654. 3190

E-mail: [info@emser.com](mailto:info@emser.com)  
[www.emser.com](http://www.emser.com)

All contents ©Emser Tile 2012

# LOWER POWDER BATH



PENDANTS (X2)  
TECH LIGHTING "PINNACLE" -  
black, 24"H -

CABINETRY  
CURRENT wide stile and rail -  
knotty adler, woodland stain -  
soft close doors -

COUNTER TOPS  
- CAESARSTONE, color: linen  
- 3cm thickness, eased edges

SINK  
- THOMPSON TRADERS "BEECH" -  
- vessel, black nickel -

FAUCET  
PFISTER "KENZO" -  
wall mount, brushed nickel -

WAINSCOT  
MARAZZI "MIDDLETON SQUARE" -  
latte, 4"x13" -

Linen

Walnut

SINK - [http://shop.ferguson.com/product/Thompson-Traders-T2RWOR-Black-Nickel-705507?Ntt=BEECH&Ns=AvailabilitySort%7Co%7C%7CPrimary\\_Finish%7C1%7C%7CSort\\_Order%7C1&term=BEECH](http://shop.ferguson.com/product/Thompson-Traders-T2RWOR-Black-Nickel-705507?Ntt=BEECH&Ns=AvailabilitySort%7Co%7C%7CPrimary_Finish%7C1%7C%7CSort_Order%7C1&term=BEECH)

FAUCET - [http://shop.ferguson.com/product/Pfister-PGT49DFiGoW8o100-Brushed-Nickel-723878?Ntt=PGT49DFiK&Ns=AvailabilitySort%7Co%7C%7CPrimary\\_Finish%7C1%7C%7CSort\\_Order%7C1&term=PGT49DFiK](http://shop.ferguson.com/product/Pfister-PGT49DFiGoW8o100-Brushed-Nickel-723878?Ntt=PGT49DFiK&Ns=AvailabilitySort%7Co%7C%7CPrimary_Finish%7C1%7C%7CSort_Order%7C1&term=PGT49DFiK)

# MIDDLETON SQUARE™

GLAZED CERAMIC WALL TILE

Oxford White



Windsor Cream



Latte



Urban Mist



Steeple Gray



Black Bean



## Sizes



4-1/4"x12-7/8"  
5/16" (8mm)

## Trims



4-1/4"x12-7/8"  
Bullnose

Thickness	4-1/4"x12-7/8" 5/16" (8mm)	4-1/4"x12-7/8" Bullnose
Oxford White (White)	MS40412MODA1P2	MS40S44C9MA1P2
Windsor Cream (Almond)	MS41412MODA1P2	MS41S44C9MA1P2
Latte (Taupe)	MS42412MODA1P2	MS42S44C9MA1P2
Urban Mist (Gray)	MS43412MODA1P2	MS43S44C9MA1P2
Steeple Gray (Dark Gray)	MS44412MODA1P2	MS44S44C9MA1P2
Black Bean (Black)	MS45412MODA1P2	MS45S44C9MA1P2

## APPLICATIONS

	Institutional	Commercial	Residential
Floors			
Walls & Backsplashes	•	•	•
Countertops			

Wall tile suitable for exterior applications in non-freezing climates only when proper installation methods are followed.



Wall  
Tile



Trim  
Available



Low  
Variation



Pre-Consumer  
Recycled Content



No  
VOC



## PERFORMANCE CHARACTERISTICS

	Moisture Absorption	Breaking Strength	MOH'S	Chemical Resistance
Wall Tile	< 20.00%	120 - 230 lbs.	4-6	Resistant

**MARAZZI**  
DARE TO BE BOLD™



- Bi-Parting, sliding barn doors
- walnut stile & rail
- LUMICOR, semi-opaque insert
- "MODERN" track, steel finish
- metal wheels
- 30" exterior pulls
- 16" interior flush pulls



## OFFICE & LAUNDRY SLIDING BARN DOORS

---

# OFFICE



## LIGHT FIXTURE

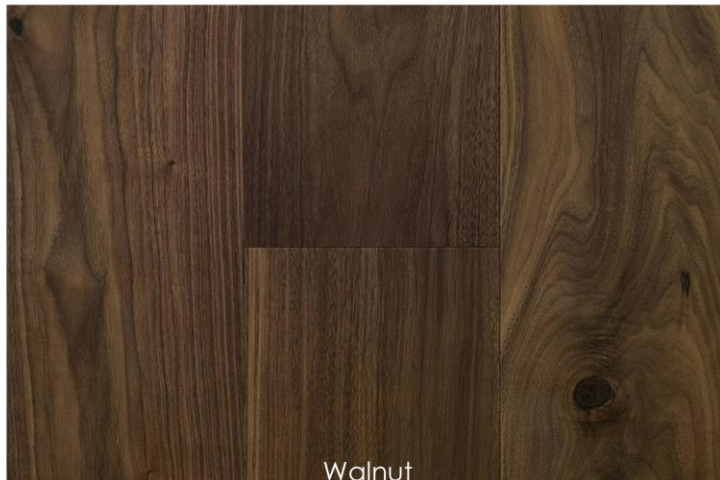
- HUBBARDTON FORGE "EXOS"
- dark smoke finish
- "eclipse" outer shade, linen inner shade
- 23" diam. x 15"H

## RECESSED CANS (X4)

- 5" recessed cans

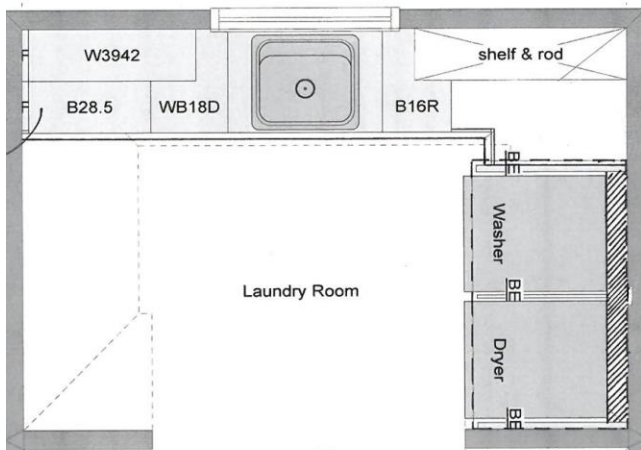
## SCONCES (X2)

- ROBERT ABBEY "BRADLEY"
- \*\*\*across the hall from office\*\*\*
- dark bronze, white glass
- 34"Hx5 3/4"W



Walnut

# LAUNDRY ROOM



PENDANTS (X2)  
 DRUM SHADE -  
 black parchment paper shade -  
 nickel stem / canopy -  
 16" diam. x 10"H -

CABINETRY  
 CURRENT wide stile and rail -  
 knotty adler, chocolate stain -  
 3/4 extension soft close drawer guides -  
 soft close doors -

COUNTER TOPS  
 CAESARSTONE, color blizzard -  
 solid surface quartz material -  
 3cm thickness, eased edge -

W/D COUNTER TOP  
 WOOD, knotty adler, chocolate stain -  
 1 1/2" thick, square edge -

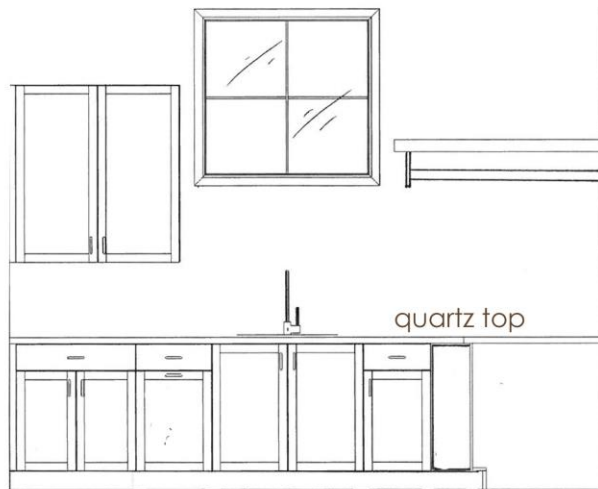
TILE  
 DESIGN MATERIALS "STREAMING" -  
 color smoke, 18"x36" -





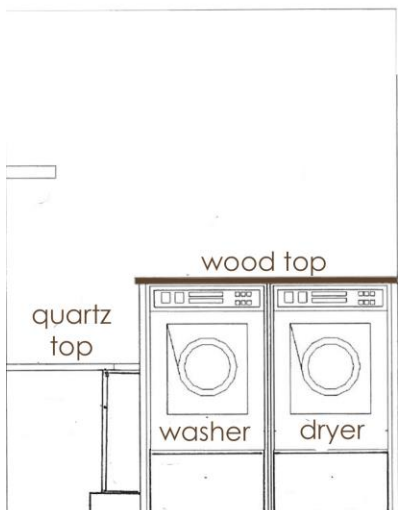
SINK  
ELKAY "CROSSTOWN" -  
undermount, single bowl -  
stainless steel -

FAUCET  
GROHE "CLASSIC" -  
swivel spout -  
chrome -



WASHER / DRYER  
- WHIRLPOOL "DUET"  
- front load with steam, white

WHIRLPOOL PEDESTALS  
- storage drawer  
- white, 15.5"H



<http://www.whirlpool.com/webapp/wcs/stores/servlet/WHRORNAjaxCatalogSearchView?storeId=10211&catalogId=10561&langId=-1&beginIndex=0&searchTerm=FWF87HEDW>

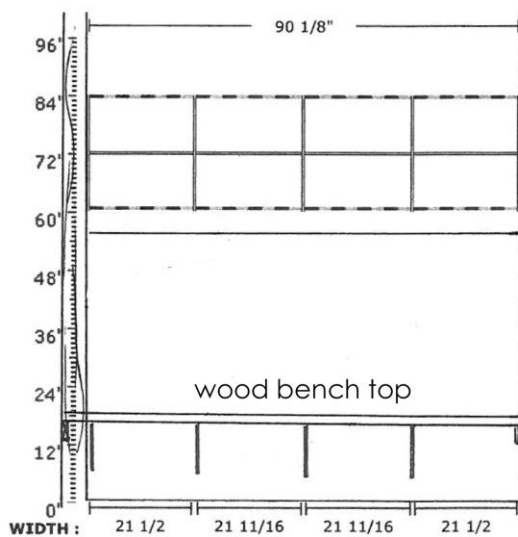
<http://www.whirlpool.com/webapp/wcs/stores/servlet/WHORNAjaxCatalogSearchView?storeId=10211&catalogId=10561&langId=-1&beginIndex=0&searchTerm=WGD87HEDW>

PEDESTALS - [http://www.whirlpool.com/-\[XHPW155DW\]-1022713/XHPW155DW/](http://www.whirlpool.com/-[XHPW155DW]-1022713/XHPW155DW/)

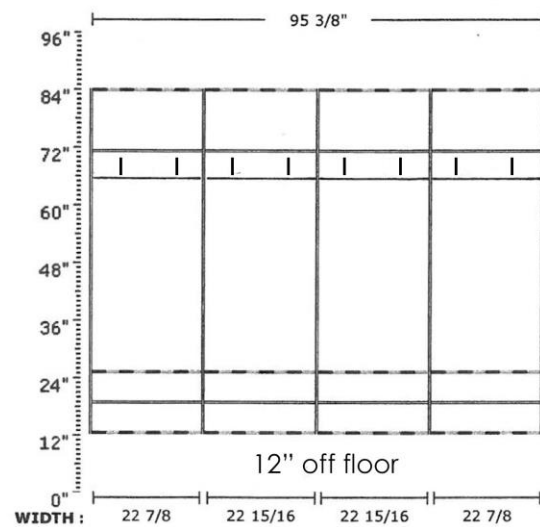
[http://shop.ferguson.com/decor/product.pl?Ntt=EECTRU24179R&Ns=AvailabilitySort%7Co%7C%7CPrimary\\_Finish%7C1%7C%7CSort\\_Order%7C1&term=EECTRU24179R&mid=345964&fh=Stainless%20Steel](http://shop.ferguson.com/decor/product.pl?Ntt=EECTRU24179R&Ns=AvailabilitySort%7Co%7C%7CPrimary_Finish%7C1%7C%7CSort_Order%7C1&term=EECTRU24179R&mid=345964&fh=Stainless%20Steel)

[http://shop.ferguson.com/decor/product.pl?Ntt=g31074001&Ns=AvailabilitySort%7Co%7C%7CPrimary\\_Finish%7C1%7C%7CSort\\_Order%7C1&term=g31074001&mid=127494&fh=Chrome](http://shop.ferguson.com/decor/product.pl?Ntt=g31074001&Ns=AvailabilitySort%7Co%7C%7CPrimary_Finish%7C1%7C%7CSort_Order%7C1&term=g31074001&mid=127494&fh=Chrome)

# MUDROOM STORAGE



LEFT SIDE WALL AS FACING LAUNDRY



RIGHT SIDE WALL AS FACING LAUNDRY

- PRO CLOSET LINE
- melamine closet line, adjustable
- espresso finish

# MECHANICAL

- Hi mass/low temperature radiant heat system using a Triangle Tube high efficiency condensing boiler.
- Boiler is 175,000 BTU type with 80 gallon indirect water heater.
- Hydronic lines are encased in gypcrete on main floor and concrete on lower floor.
- R- esidence has 9 separate zones for heat system which are each controlled by individual thermostats.

# ELECTRICAL

- 82 Receptacles
- 10 GFCI Receptacles
- 5 Floor Receptacles
- 5 Exterior Receptacles
- 39 - 5" recessed cans
- 7 - 5" recessed cans / Shower
- 6 - 4" recessed cans
- 4 - 110CFM Panasonic exhaust fans
- 3 - 80 CFM Panasonic exhaust fans

Orozco Electric

1785 Fish Creek Falls Road  
Steamboat Springs, CO 80487

## Estimate

Date	Estimate #
11/13/2015	54

Name / Address
Soda Mountain Carpentry Fox Lane 2395 Fox Ridge Lane, CO. 80487

			Project
Description	Qty	Rate	Total
Soda Mountain Carpentry- Fox Ridge Lane / 2395 Fox Ridge Lane -Electrical estimate including - Temporary construction power / Main Electrical Service / Complete Electrical Rough and Trim out.		0.00	0.00
Electrical Service -New main electrical service from approved YVEA meter location - Remote location next to YVEA power pedestal- 3" PVC conduit to back of house-entering building at electrical mechanical room in garage / 150'- allowance on main Service conduit run / Main Service to be 200 amps- 8 space feed-through disconnect to be mounted at meter location / Service feeders to be 4/0 Alum. / 52 space main breaker panel to be mounted in mechanical room / All service equipment to be Square D QO / all grounding to meet NEC code.		0.00	0.00
Electrical Rough-In / Complete electrical rough-in using NM-B cable ( Romex ) and plastic nail-on boxes / installation of wiring into standard wood framing with Steel and timber accents / dedicated circuits to be installed for major appliances including 1- 240 volt 50 amp Hot-Tub / 1- 240 volt 40 Steamer / 1- 20 amp Heat - Tape circuit - 1 location / 120 volt - 20 amp circuits for- Washers - ( 2 ) / microwave / disposal- 1 / refrigerator / dishwasher / boiler / 6- Panasonic exhaust fans- 4-110 CFM , 2- 80 CFM / Recessed can light- 50 allowance - Juno IC20 5" housing / 2- LEW PVC floor receptacle boxes		0.00	0.00
		<b>Subtotal</b>	
		<b>Sales Tax (2.9%)</b>	
		<b>Total</b>	

Orozco Electric

1785 Fish Creek Falls Road  
Steamboat Springs, CO 80487

## Estimate

Date	Estimate #
11/13/2015	54

Name / Address
Soda Mountain Carpentry Fox Lane 2395 Fox Ridge Lane, CO. 80487

			Project
Description	Qty	Rate	Total
Electrical Trim-Out / Complete electrical trim-out including Pass & Seymour decora style devices and plates / complete wiring of mechanical boiler and pumps / recessed can trims to be Juno 205W-WH with Topaz 11 watt dimmable LED BR 30 lamps / assembly and installation of owner supplied light fixtures up to 32 man hours		0.00	0.00
Exclusions - Excavation for main service conduit / all low-voltage wiring / dimmers switches / All Heat Tape, heat tape installation, breakers and switches for heat tape / all duct work for exhaust fans		0.00	0.00
Materials- Complete for: Service / Rough- In / Trim-Out -		0.00	0.00T
Labor- Complete Labor-		0.00	0.00
City Electrical Permit-		0.00	0.00
		<b>Subtotal</b>	\$0.00
		<b>Sales Tax (2.9%)</b>	\$0.00
		<b>Total</b>	\$0.00

## 15A, 120V TradeMaster® NAFTA- Compliant/Single-Pole Decorator Switch, White

TM870NAW



When paired with one of our screwless wall plates, the Pass & Seymour TradeMaster® NAFTA-Compliant/Single-Pole Decorator Switch brings you the style that blends perfectly with any decorating choice, from formal to relaxed.



### features & benefits

- Designer-style satin-finish rocker.
- High-impact resistant thermoplastic construction.
- External screw-pressure-plate back and side wired. Accepts #12 and #14 AWG.
- Push wire #14 AWG.
- Narrow back body leaves more room for wires in the box.
- Extra-long, through-body strap eliminates floating installations and imperfect applications.
- Smooth, quiet paddle action.
- Easy-access green hex head ground screw.
- Tri-drive ground, terminal, and mounting screws.
- ON-OFF switches conform to NEC 430-104 requirements for kitchen disposal units.
- NAFTA-Compliant Residential Wiring Devices are ideal for use on projects subject to the provisions of the Buy American Act.
- For covering patents, see [www.legrand.us/patents](http://www.legrand.us/patents).

### specifications

#### General Info

Color: White  
Product Series: TradeMaster  
Type: Decorator  
Number Of Poles: 1  
Special Features: NAFTA Compliant  
Style: Decorator

**Listing Agencies/Third Party Information**

cULus: Yes  
UN SPS C: 39121704

**Dimensions**

Depth U S: 1.27"  
Height U S: 4.19"  
Width U S: 1.43"

**Technical Information**

Amps: 15A  
Volts: 120

**Buy American Act Compliance**

Country of Origin: MEXICO  
Buy American Act Status: Buy American Act Compliant

## Decorator Openings, One Gang, Light Almond

TP26LA



Trademaster Wall Plate, single gang, decorator plate is molded of rugged, practically indestructible self-extinguishing nylon. It is preferred for hospital, industrial, institutional, and other high-abuse applications. Available in Ivory, White, Brown, Gray, Black, Blue, Orange, Red, and Light Almond.

### features & benefits

- Available in "TP" series, extra 3/16 inch width and height than Standard size plates; and "TPJ" series, extra 3/16 inch width and height than Junior-Jumbo size plates.
- Nominal thickness, .070 inch.



### specifications

#### General Info

Color: Light Almond  
Size: Standard  
Special Features: Unbreakable  
Style: Decorator

#### Listing Agencies/Third Party Information

CSA Listing Info: No  
CUL Listing No: No  
cULus: Yes  
cURus: No  
Federal Spec: No

UL Listing No: No  
UN SPS C: 39121704  
UR: No

**Dimensions**

Weight: 0.04609

**Technical Information**

Material: Nylon  
Capacity: 1-gang

**Buy American Act Compliance**

Country of Origin: UNITED-STATES-OF-AMERICA  
Buy American Act Status: Buy American Act Compliant

## TradeMaster Tamper- Resistant Receptacle

885TRW



### features & benefits

Decorator Tamper-Resistant Receptacle with high-impact resistant thermoplastic construction meets 2008 National Electrical Code Tamper-Resistant requirements. It protects children with a patented shutter system helps prevent improper insertion of foreign objects. It has superior protection than traditional outlet caps or protection plates. 15 amp, 125 volt, White.

- Meets 2008 National Electrical Code Tamper-Resistant requirements.
- Protects children: patented shutter system helps prevent improper insertion of foreign objects.
- High-impact resistant thermoplastic construction.
- Extra-long strap.
- Quickloop wire looping aid.
- Long-term blade retention.
- Longer tri-drive screws for easier 12 AWG looping.
- Extra-large circuit break-off tabs.
- Side-access push wire release.
- Ultrasonic welding of face to back body.
- Side wire accepts #12 – #14 AWG solid wire.
- Push wire accepts #14 AWG solid only.
- Superior protection than traditional outlet caps or protection plates.
- Low profile face.
- Traditional contoured face (3232 models).
- Self-grounding models provide automatic ground clip.
- For covering patents, see [www.legrand.us/patents](http://www.legrand.us/patents).

### specifications

#### General Info

Color: White

Type: Tamper-Resistant

**Listing Agencies/Third Party Information**

CSA Listing Info: C22.2 No.42  
CSA Standard: Yes  
cULus: Yes  
Federal Spec: No  
UL Listing No: UL498  
UL Standard: Yes  
UN SPS C: 39121704

**Dimensions**

Depth U S: 1"  
Height U S: 3.812"  
Width U S: 1.29"

**Technical Information**

Amps: 15A

**Buy American Act Compliance**

Country of Origin: CHINA  
Buy American Act Status: No




Project: \_\_\_\_\_  
Fixture Type: \_\_\_\_\_  
Location: \_\_\_\_\_  
Contact/Phone: \_\_\_\_\_

## 5" UNIVERSAL IC HOUSING

### INCANDESCENT LAMPS

### IC20

#### PRODUCT DESCRIPTION

IC Air-Loc® Housing • Energy efficient, sealed housing • Can be completely covered with insulation • When used with Air-Loc Gasket (see accessories), stops infiltration and exfiltration of air, reducing heating and cooling costs • Trims shown with Air-Loc symbol  do not require a gasket.

#### PRODUCT SPECIFICATIONS

**Lamp** Lamp ratings based on trim selected—see reverse.

**Socket** Medium base porcelain with nickel-plated copper screw shell • Drop socket with spring to accommodate certain trim installation.

**Trims** Trim selection shown on reverse.

**Labels** U.L. listed for through-branch wiring, damp locations and IP • Product thermally protected against improper use of lamps • Union made • UL Listed/CSA certified • Trims 210N, 211 and 212N are wet location approved for covered ceiling applications • Trims 215 and 216 are wet location approved for covered ceiling applications, **when used with outdoor rated lamps.**

**Testing** All reports are based on published industry procedures; field performance may differ from laboratory performance.

Product specifications subject to change without notice.

#### INSTALLATION

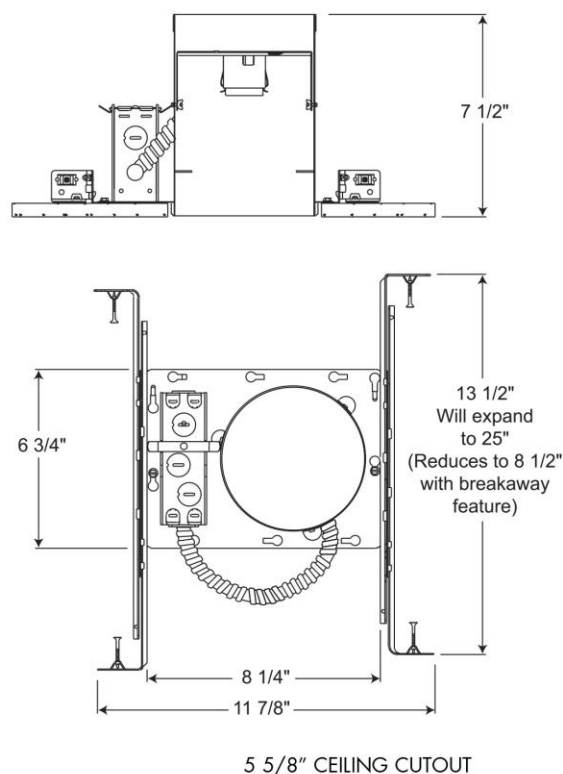
**Real Nail 3 Bar Hangers** Telescoping, patent-pending Real Nail 3 system permits quick placement of housing anywhere within 24" O.C. joists or suspended ceilings • Integral T-bar notch and clip secures housing in suspended ceiling grid – no accessory clips required • 24" expansion stop allows quick placement of fixture in standard grid spacing • Bars scored in two locations for fast, clean breaking, allowing housing installation in tight applications • Bars captive to mounting frame • Edge-mounted for extra strength • Captive bugle-headed ring shank nail for quick one-step installation and easy removal with claw hammer for fixture relocation • Quick-Loc slot (location identified on the mounting frame) and oversized locking set screw lock fixture in position • Bar hanger foot contoured to align to bottom of construction joist • Alternate mounting holes included.

**Junction Box** Pre-wired junction box provided with (5) 1/2" and (1) 3/4" knockouts, (4) Non-metallic sheathed cable connectors and ground wire, U.L. listed/CSA certified for through-branch wiring, maximum 8 No. 12 AWG 90° C branch circuit conductors (4 in, 4 out) • Junction box provided with removable access plates • Knockouts equipped with pryout slots.

**Mounting Frame** 22-gauge die-formed galvanized steel mounting frame • Rough-in section (junction box, mounting frame, housing and bar hangers) fully assembled for ease of installation • Sight lines embossed on mounting frame to allow for easy viewing when aligning fixtures.

**Housing** IC housing, .032" aluminum sealed for Air-Loc Compliance • Housing is vertically adjustable to accommodate up to a 1" ceiling thickness.

#### DIMENSIONS



#### ACCESSORIES

Catalog No.	Description
ALG5	Air-Loc Gasket

To order, specify catalog number.

#### PRODUCT CODES

Catalog Number	Input Voltage	Lamp Rating (max.)
IC20	120V	A19/BR30/PAR20/PAR30/PAR30L/R20/R30 (See reverse for max. trim rating)

REV-1/12


















# 5" UNIVERSAL IC HOUSING


## INCANDESCENT LAMPS

### IC20

## TRIMS/LAMPS

	Cat. No.	Description	Max. Lamp Rating
	<b>201N-WH</b>	Open Frame	65W BR30
** 	<b>205B-WH</b>	BR30/PAR30 Black Baffle	50W PAR30
	<b>205W-WH</b>	BR30/PAR30 White Baffle	
	<b>205B-SC</b>	BR30/PAR30 Black Baffle	
	<b>205B-ABZ</b>	BR30/PAR30 Black Baffle	
** 	<b>204C-WH</b>	BR30/PAR30 Cone - Clear Alzak®	50W PAR30
	<b>204G-WH</b>	BR30/PAR30 Cone - Gold Alzak®	
	<b>204B-WH</b>	BR30/PAR30 Cone - Black Alzak®	
	<b>204PT-SC</b>	BR30/PAR30 Cone - Pewter Alzak®	
	<b>204HZ-WH</b>	BR30/PAR30 Cone - Haze	
	<b>204W-WH</b>	BR30/PAR30 Cone - Gloss White	
	<b>204WHZ-WH</b>	BR30/PAR30 Cone - Wheat Haze	
	<b>204WHZ-ABZ</b>	BR30/PAR30 Cone - Wheat Haze	
** 	<b>206C-WH</b>	Deep Cone - Clear Alzak®	50W PAR30
	<b>206G-WH</b>	Deep Cone - Gold Alzak®	
	<b>206B-WH</b>	Deep Cone - Black Alzak®	
	<b>206PT-SC</b>	Deep Cone - Pewter Alzak®	
	<b>206HZ-WH</b>	Deep Cone - Haze	
	<b>206WHZ-WH</b>	Deep Cone - Wheat Haze	
	<b>206WHZ-ABZ</b>	Deep Cone - Wheat Haze	
** 	<b>207C-WH</b>	Cone - Clear Alzak®	50W PAR20/R20
	<b>207G-WH</b>	Cone - Gold Alzak®	
	<b>207B-WH</b>	Cone - Black Alzak®	
	<b>207W-WH</b>	Cone - Gloss White	
	<b>207HZ-WH</b>	Cone - Haze	
	<b>207WHZ-WH</b>	Cone - Wheat Haze	
	<b>215B-WH ♦♦</b>	BR30/PAR30 Black Baffle	65W BR30, 75W PAR30L, 75W PAR30 w/Socket Extender
	<b>215W-WH ♦♦</b>	BR30/PAR30 White Baffle	
	<b>216C-WH ♦♦</b>	Cone - Clear Alzak®	65W BR30, 75W PAR30L, 75W PAR30 w/Socket Extender,
	<b>216G-WH ♦♦</b>	Cone - Gold Alzak®	
	<b>216W-WH ♦♦</b>	Cone - Gloss White	
	<b>216HZ-WH ♦♦</b>	Cone - Haze	
	<b>216WHZ-WH ♦♦</b>	Cone - Wheat Haze	
	<b>208NB-WH</b>	Eyeball with Black Baffle	50W PAR20/R20
	<b>208NW-WH</b>	Eyeball with White Baffle	
	<b>529-WH</b>	PAR30 Eyeball	75W PAR30
	<b>529-SC</b>	PAR30 Eyeball	
	<b>529-ABZ</b>	PAR30 Eyeball	
	<b>209N-WH</b>	Gimbal Ring with Flat Trim	75W PAR30
	<b>688B-WH</b>	Gimbal Ring with Black Baffle	50W PAR30
	<b>688W-WH</b>	Gimbal Ring with White Baffle	
	<b>689C-WH</b>	Gimbal Ring in Clear Cone	50W PAR30
	<b>689G-WH</b>	Gimbal Ring in Gold Cone	
	<b>689HZ-WH</b>	Gimbal Ring in Haze Cone	
	<b>689WHZ-WH</b>	Gimbal Ring in Wheat Haze Cone	
	<b>689WHZ-ABZ</b>	Gimbal Ring in Wheat Haze Cone	
	<b>210N-WH ♦</b>	Lensed Shower/Closet Light	40W A19
	<b>210N-SC ♦</b>	Lensed Shower/Closet Light	
	<b>210N-ABZ ♦</b>	Lensed Shower/Closet Light	
	<b>211-PW ♦</b>	Shower Trim	40W A19
	<b>212N-WH ♦</b>	Shower Trim	40W A15, 50W PAR30
	<b>212N-SC ♦</b>	Shower Trim	
	<b>212N-ABZ ♦</b>	Shower Trim	

Trim Size: 6 1/4" O.D. (except Cat No. 529 - 6 1/2" O.D.)  
Trim Finish: ABZ - Classic Aged Bronze, BL - Black, GP - Graphite,  
PW - Plastic White (Polycarbonate material shower trim),  
SC - Satin Chrome, SL - Silver, WH - White.  
Alzak is a registered trademark of Alcoa Corp.  
Note: In Canada when insulation is present, Type IC fixtures must be used.

 JUNO IC housings meet IECC Energy Code requirements per ASTM E283.  
Air-Loc® rated trims are pre-gasketed for minimum air leakage with IC housings.

♦♦ UL Listed for use in wet location.

♦♦ UL Listed for use in wet location with outdoor rated lamp.

\*\* NOTE: TR5 Trim Ring compatible with 204, 205, 206, 207 trims.



1300 S. Wolf Road • Des Plaines, IL 60018 • Phone (847) 827-9880 • Fax (847) 827-2925  
220 Chrysler Drive • Brampton, Ontario • Canada L6S 6B6 • Phone (905) 792-7335 • Fax (905) 792-0064  
Visit us at [www.junolightinggroup.com](http://www.junolightinggroup.com)

Printed in U.S.A. ©2012 Juno Lighting, LLC.













## 5" TRIM SERIES BAFFLES

Project: \_\_\_\_\_

Fixture Type: \_\_\_\_\_

Location: \_\_\_\_\_

Contact/Phone: \_\_\_\_\_

Trim Series	Dimensions	Aperture	Catalog No.	Housing/Lamp Compatibility
 <b>Downlight Baffle</b>	 6 1/4"	4-3/8"	<b>205W-WH</b> - White Baffle, White Trim <b>205B-WH</b> - Black Baffle, White Trim <b>205B-ABZ</b> - Black Baffle, Classic Aged Bronze Trim <b>205B-SC</b> - Black Baffle, Satin Chrome Trim  Compatible with TR5, 5" Trim Ring	IC20/IC20W/IC20S/IC20R: 50W PAR30 TC20/TC20S/TC20R: 75W PAR30, 65W BR30 IC20LEDG4/IC20RLEDG4/IC20LWDG4N/IC20RLWDG4N Series IC920LEDG4/IC920RLEDG4/IC920LWDG4/IC920RLWDG4 Series IC1420LEDG4 Series, TC1420LED4 Series TC920LEDG4 Series
 <b>Enclosed Baffle</b>	 6 1/4"	4-3/8"	<b>215W-WH</b> - White Baffle, White Trim <b>215B-WH</b> - Black Baffle, White Trim	IC20/IC20W/IC20S/IC20R: 65W BR30, 75W PAR30L, 75W PAR30 with Socket Extender IC20N/IC20NW: 65W BR30 TC20/TC20S/TC20R: 85W BR30, 75W PAR30L, 75W PAR30 with Socket Extender, 60W A19 ICPL/PL526: 26W, ICPL/PL518: 18W, ICPL/PL513: 13W
 <b>Deep Baffle</b>	 6 1/4"	4-1/2"	<b>203W-WH</b> - White Baffle, White Trim <b>203B-WH</b> - Black Baffle, White Trim  Compatible with TR5, 5" Trim Ring	TC20/TC20S/TC20R: 75W PAR30, 65W BR30
 <b>Reflector with Baffle</b>	 6 1/4"	4-3/8"	<b>218W-WH</b> - White Baffle, White Trim <b>218B-WH</b> - Black Baffle, White Trim	ICPL/PL526: 26W, ICPL/PL518: 18W, ICPL/PL513: 13W
 <b>Shallow Baffle</b>	 6 1/4"	4-3/8"	<b>275W-WH</b> - White Baffle, White Trim <b>275B-WH</b> - Black Baffle, White Trim	IC25/IC25W/IC25S/IC25R: 50W BR30, 50W PAR30, 50W PAR30L



### 5" Trim Ring compatible with 203, 205 trims

**TR5-WH** - White

**TR5-BL** - Black

**TR5-SC** - Satin Chrome

**TR5-ABZ** - Classic Aged Bronze



1300 S. Wolf Road • Des Plaines, IL 60018 • Phone (847) 827-9880 • Fax (847) 827-2925  
220 Chrysler Drive • Brampton, Ontario • Canada L6S 6B6 • Phone (905) 792-7335 • Fax (905) 792-0064  
Visit us at [www.junolightinggroup.com](http://www.junolightinggroup.com)

Printed in U.S.A. ©2015 Juno Lighting, LLC.

## Specification Data

### Panasonic Ventilation Fan

#### Description

Ventilating fan shall be Low Noise ceiling mount type rated for continuous operation. Fan shall be ENERGY STAR rated and certified by the Home Ventilating Institute (HVI). Evaluated by the Underwriters Laboratories and conform to both UL and cUL standards.

#### Motor/Blower:

- Four-pole totally enclosed condenser motor rated for continuous operation.
- Power Rating shall be 120 volts and 60 Hz.
- Fan shall be UL listed for tub/shower enclosure when used with a GFCI branch circuit wiring.
- Motor equipped with thermal-cutoff fuse.
- Removable with permanently lubricated plug-in motor.

#### Housing:

- Rust proof paint, galvanized steel body.
- Detachable 4" diameter duct adapter.
- Built in backdraft damper.
- Expandable extension bracket up to 24".
- Double hanger bar system allowing for ideal positioning.

#### Grille:

- Attractive design using PP material.
- Attaches directly to housing with torsion springs.

#### Warranty:

- The factory warranty shall be a minimum of 3 years.

#### Typical Specifications:

Ventilating fan shall be of the ceiling mount, ENERGY STAR rated type, with no less than 80 CFM and no more than 0.3 sone as certified by the Home Ventilating Institute (HVI) at 0.1 static pressure in inches water gauge. Power consumption shall be no greater than 14.7 watts and ENERGY STAR rated with efficiency rating of no less than 5.8 CFM/watt. The motor shall be totally enclosed, four pole condenser type engineered to operate continuously. Power rating shall be 120v/60Hz. Duct diameter shall be no less than 4". Fan shall be UL and cUL listed for tub/shower enclosure when used with GFCI branch circuit wiring. Fan shall be ASHRAE 62.2, LEED, EarthCraft, California Title 24, ENERGY STAR IAP and WA Ventilation Code compliant.

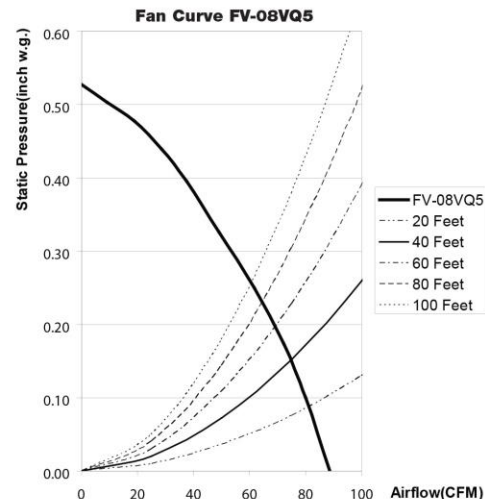
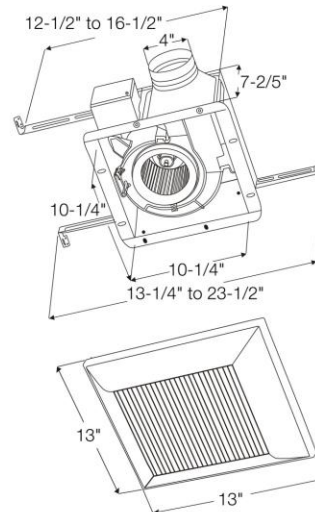
<b>FV-08VQ5</b>		<b>4" Duct (Standard)</b>	
Ventilation Fan Characteristics (HVI Certified Data)	Static Pressure (inches w.g.)	0.1	0.25
	Air Volume (CFM)	80	62
	Noise (sones)	<0.3	0.4
	Power Consumption (Watts)	14.7	14.5
	Energy Efficiency (CFM/Watts)	5.8	4.5
	Speed (RPM)	829	1089
	Current (amps)	0.12	0.12
	Power Rating (V/Hz)	120/60	
ENERGY STAR rated		Yes	

As of 06/10

**Panasonic**  
*WhisperCeiling™*  
VENTILATION FAN



**FV-08VQ5 (80 CFM)**



For Complete Installation Instructions Visit [www.panasonic.com/building](http://www.panasonic.com/building)



Model	Quantity	Comments	Project:
			Location:
			Architect:
			Engineer:
			Contractor:
			Submitted by:
			Date:

Panasonic Home & Environment | One Panasonic Way | Secaucus, NJ 07094 | 866-292-7292 | [www.panasonic.com/building](http://www.panasonic.com/building)

## Specification Data

### Panasonic Ventilation Fan

**Panasonic**  
**WhisperCeiling™**  
 VENTILATION FAN



#### Description

Ventilating fan shall be Low Noise ceiling mount type rated for continuous operation. Fan shall be ENERGY STAR rated and certified by the Home Ventilating Institute (HVI). Evaluated by the Underwriters Laboratories and conform to both UL and cUL standards.

#### Motor/Blower:

- Four-pole totally enclosed condenser motor rated for continuous operation.
- Power Rating shall be 120 volts and 60 Hz.
- Fan shall be UL listed for tub/shower enclosure when used with a GFCI branch circuit wiring.
- Motor equipped with thermal-cutoff fuse.
- Removable with permanently lubricated plug-in motor.

#### Housing:

- Rust proof paint, galvanized steel body.
- Detachable 4" diameter duct adapter.
- Built in backdraft damper.
- Expandable extension bracket up to 24".
- Double hanger bar system allowing for ideal positioning.

#### Grille:

- Attractive design using PP material.
- Attaches directly to housing with torsion springs.

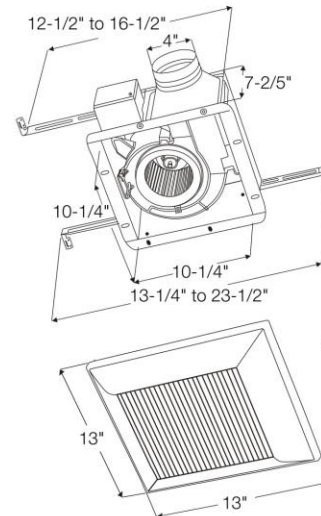
#### Warranty:

- The factory warranty shall be a minimum of 3 years

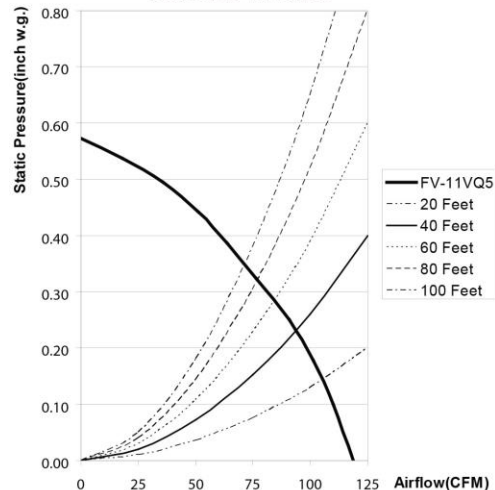
#### Typical Specifications:

Ventilating fan shall be of the ceiling mount, ENERGY STAR rated type, with no less than 110 CFM and no more than 0.3 sone as certified by the Home Ventilating Institute (HVI) at 0.1 static pressure in inches water gauge. Power consumption shall be no greater than 21.1 watts and ENERGY STAR rated with efficiency rating of no less than 5.3 CFM/watt. The motor shall be totally enclosed, four pole condenser type engineered to operate continuously. Power rating shall be 120v/60Hz. Duct diameter shall be no less than 4". Fan shall be UL and cUL listed for tub/shower enclosure when used with GFCI branch circuit wiring. Fan shall be ASHRAE 62.2, LEED, EarthCraft, California Title 24, ENERGY STAR IAP and WA Ventilation Code compliant.

**FV-11VQ5 (110 CFM)**



Fan Curve FV-11VQ5



FV-11VQ5		4" Duct (Standard)	
Ventilation Fan Characteristics (HVI Certified Data)	Static Pressure (inches w.g.)	0.1	0.25
	Air Volume (CFM)	110	91
	Noise (sones)	<0.3	0.5
	Power Consumption (Watts)	21.1	20.7
	Energy Efficiency (CFM/Watts)	5.3	4.5
	Speed (RPM)	950	1161
	Current (amps)	0.18	0.17
	Power Rating (V/Hz)	120/60	
	ENERGY STAR rated	Yes	

As of 06/10

For Complete Installation Instructions Visit [www.panasonic.com/building](http://www.panasonic.com/building)

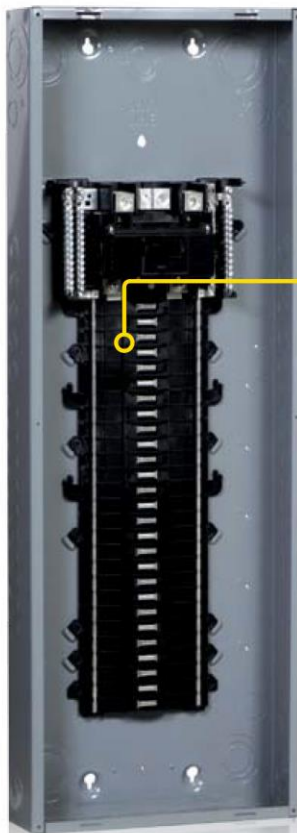


Model	Quantity	Comments	Project:
			Location:
			Architect:
			Engineer:
			Contractor:
			Submitted by:
			Date:

Panasonic Home & Environment | One Panasonic Way | Secaucus, NJ 07094 | 866-292-7292 | [www.panasonic.com/building](http://www.panasonic.com/building)

# Innovative Design!

## Square D QO Plug-on Neutral Load Centers and CAFI Circuit Breakers



Designed for reliability, the QO™ Plug-on Neutral CAFI Circuit Breakers connect directly to the neutral bar, providing a time- and labor-saving installation.



Square D™ CAFI Circuit Breakers now feature **TIME SAVER** diagnostics to help you find circuit issues faster

### The QO Plug-on Neutral Advantage:

- > Fewer connections — **Faster installation**
- > No pigtails — **Frees gutter space**
- > **TIME SAVER** diagnostics — **Advanced trip indication technology saves time**
- > QO Plug-on Neutral CAFI Circuit Breaker neutral connector — **Designed for reliability and ease of installation**
- > QO Load Center interior — **Engineered for a quick Plug-on Neutral connection on every circuit**



**Want to learn more?**

Scan this QR Code for more information about QO Plug-on Neutral Load Centers and CAFI Circuit Breakers.



**SQUARE D**

™

by **Schneider Electric**

## QO Plug-on Neutral Load Center and CAFI Circuit Breaker offer

INDOOR

Mains Rating	Spaces	Max. 1P Circuits	Max. Tandem Breakers	Load Center Box and Interior	Indoor Cover with Door (Order Separately)		Main Wire Size AWG/kcmil	Equipment Ground Bar Kit (Order Separately If Priced)
				Catalog Number	Flush Catalog Number	Surface Catalog Number	Al/CU	Catalog Number
Convertible Mains — Factory-Installed Main Lugs — 65 kA Short Circuit Current Rating — Copper Bus								
QOM1 Main Frame Size, Convertible to Main Circuit Breaker								
125 A	24	24	0	QO124L125PG	QOC24UF	QOC24US	6-2/0	PK15GTA
Convertible Mains — Factory-Installed Main Lugs — 65 kA Short Circuit Current Rating — Copper Bus								
QOM2 Main Frame Size, Convertible to Main Circuit Breaker								
200 A	30	30	0	QO130L200PG	QOC30UF	QOC30US	6-250	PK23GTA, LK100AN
225 A	42	42	0	QO142L225PG	QOC42UF	QOC42US	6-300	(2) PK15GTA
	54	54	0	QO154L225PG	QOC54UF	—		PK23GTA, LK100AN
Convertible Mains — Factory-Installed Main Circuit Breaker — 22 kA Short Circuit Rating — Copper Bus								
QOM1 Main Circuit Breaker Frame Size, Convertible to Main Lugs or Lower Amperage Main Circuit Breaker								
100 A	24	24	0	QO124M100P	QOC24UF	QOC24US	6-2/0	PK15GTA
Convertible Mains — Factory-Installed Main Circuit Breaker — 22 kA Short Circuit Rating — Copper Bus								
QOM2 Main Circuit Breaker Frame Size, Convertible to Main Lugs or Lower Amperage Main Circuit Breaker								
200 A	30	30	0	QO130M200P	QOC30UF	QOC30US	4-250	PK18GTA
	42	42	0	QO142M200P	QOC42UF	QOC42US		PK23GTA
	54	54	0	QO154M200P	QOC54UF	—		PK23GTA
	60	60	0	QO160M200PC*	Included			PK23GTA

\* Door kit available separately, order QOCDK60

Circuit Breaker Type	Ampere Rating	1P 120 Vac 10k AIR 1 Space Required	1P 120 Vac 22k AIR 1 Space Required
		Catalog Number	Catalog Number
Combination Arc Fault Interrupter	15	QO115PCAFI	QO115VHPCAFI
	20	QO120PCAFI	QO120VHPCAFI

### See the difference!



▲ Pigtail Neutral connection

- > Less wiring
- > Clean gutter
- > Fast installation



▲ Plug-on Neutral connection



Take the next step to quality with QO Plug-on Neutral Load Centers and CAFI Circuit Breakers. Whatever your requirements for products are, Schneider Electric has a solution to meet your needs.

For more information, call us at **888-SQUARED**.

#### Schneider Electric USA, Inc.

1415 S. Roselle Road  
Palatine, IL 60067  
Tel: 847-397-2600  
Fax: 847-925-7500  
www.schneider-electric.com

Document Number 1100HO1202

November 2012

©2012 Schneider Electric. All Rights Reserved. All trademarks are owned by Schneider Electric Industries SAS or its affiliated companies. 998-1169675\_US

# [TIME SAVER Diagnostics]



Circuit information at the touch of a button



Square D QO™ and HomeLine™ Combination Arc Fault (CAFI) Circuit Breakers with TIME SAVER Diagnostics help save time and money by combining proven quality and reliability with enhanced trip indication technology. TIME SAVER Diagnostics helps take away the guesswork and provides diagnostic assistance at the touch of a button in the unlikely event a trip should occur. By identifying the type of fault that has occurred, it improves troubleshooting time and helps contractors and homeowners identify the trip cause faster.

Electrical problems spark an estimated 51,000 home fires and cause more than \$1 billion in residential property damage each year (National Fire Protection Association,® 2003-2007). Circuit breakers are an extremely important part of the home electrical system. They help keep people and property safe by tripping when a circuit issue is detected. QO and HomeLine CAFI Circuit Breakers help provide protection against electrical fires, 24 hours a day, 365 days a year!

In the event a CAFI circuit breaker trips, quickly identifying the source of the trip event is critical. Schneider Electric™ customers enjoy the TIME SAVER Diagnostics feature in all Square D™ CAFI and Dual Function circuit breakers.



Scan here

for more information on QO and HomeLine CAFI Circuit Breakers and TIME SAVER Diagnostics, visit <http://www.schneider-electric.us/go/timesaver>, or call 888-SQUARED.

## Key TIME SAVER Diagnostics Benefits:

- **Saves money** — Reduces troubleshooting time
- **Easy-to-use** — Provides circuit information at the touch of a button
- **Accurate and reliable** — Engineered with the quality and craftsmanship that have made Square D the preferred brand of electricians and homeowners for over 50 years



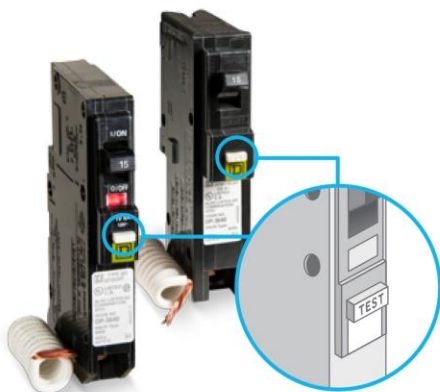


## How does TIME SAVER Diagnostics work?

TIME SAVER Diagnostics identify circuit issues faster. The TIME SAVER sequence is simple and easy to use, and requires no tools or special training.

- Simply turn off the circuit breaker, hold down the Push-To-Test button, and then turn the circuit breaker back on. It's that simple!
  - » If the circuit breaker trips immediately, it is detecting a Fault to Ground.
  - » If the circuit breaker trips after a 2-second delay; it is detecting an Arc Fault. In either case, it is an indication that there is an issue ON the circuit and NOT with the circuit breaker itself.

TIME SAVER Diagnostics is equipped in all Square D HomeLine and QO(B) CAFI Circuit Breakers (1-Pole and 2-Pole) and Dual Function Circuit Breakers with a date code of 1130 or higher.



All QO and QO(B) CAFI Circuit Breakers (1P and 2P), HomeLine CAFI Circuit Breakers (1P and 2P), QO and HomeLine Dual Function Circuit Breakers offer the simple, effective TIME SAVER diagnostics feature.

*\*QO and HomeLine CAFI and Dual Function Circuit Breakers are available in both Pigtail and Plug-on Neutral configurations.*



For more information on TIME SAVER Diagnostics, ask your authorized Schneider Electric distributor.



Visit:  
[www.schneider-electric.us/go/timesaver](http://www.schneider-electric.us/go/timesaver)



Call: 888-SQUARED

### Schneider Electric USA, Inc

1415 S. Roselle Road  
Palatine, IL 60067  
Tel: 847-397-2600  
Fax: 847-925-7500  
[www.schneider-electric.com/us](http://www.schneider-electric.com/us)

Document Number 0700HO1402

<b>Trips instantly (less than one second)</b>	<b>Fault to Ground</b> <ul style="list-style-type: none"> <li>• Arcing to ground</li> <li>• Shared neutral</li> <li>• Grounded neutral</li> <li>• Ground fault</li> </ul>
<b>Trips at two seconds</b>	<b>Arc Fault</b> <ul style="list-style-type: none"> <li>• Parallel arc fault</li> <li>• Series arc fault</li> </ul>
<b>Trips at five seconds</b>	<b>Procedure Complete</b> <ul style="list-style-type: none"> <li>• No fault</li> <li>• Thermal overload</li> <li>• Short circuit</li> </ul>

### Key TIME SAVER features:

- Integrated diagnostics in all QO and HomeLine CAFI Circuit Breakers
- Stores last trip event
- Quick identification of fault type
  - » Fault to Ground
  - » Arc Fault
  - » Overload/Short Circuit

### Specification for 1-Pole and 2-Pole CAFI Circuit Breakers

- UL® 489
- UL 1699
- CSA® 22.2 No. 5-09
- CSA TII No. M-02a

©2014 Schneider Electric. All Rights Reserved. Schneider Electric, Square D, QO, and HomeLine are trademarks owned by Schneider Electric Industries SAS or its affiliated companies. All other trademarks are property of their respective owners. 998-1232556\_US

January 2014



## **Soda Mountain Fox Ridge**

Cloud 9 has roughed in all the necessary wire for a home automation system at the Fox Ridge Project. Using Cloud 9's industry expertise, we created a rough in design and initial system specification that will provide a modern and user-friendly way to control your home environment. We look forward to future team meetings with the homeowner and other subcontractors to discuss potential options for new technology as the project moves through the construction stages.

Cloud 9, envisioned by Jen Edelstein and Thomas McKenzie, offers homeowners the highest level of technology services, but with a personal touch. We design and install our systems in such a way that we are never outdated and always have the potential to stay current.

Below is a detailed breakdown of our scope:

### **Rough in –**

Cloud 9 uses the best infrastructure wire on the market providing the end user with uncompromised signal quality and bandwidth for future expansions. Our wire locations include rough-in back boxes, mud rings and final trim parts. In our rough in budget, we have encompassed all data, audio & video, theater, and home system control locations as called out on the provided plan set.

### **Security and life safety system –**

We have provided a budget for necessary life safety devices including smokes, heat detectors, CO detectors, noxious gas sensor and sirens.

For security, there will be a door contact on all exterior doors and interior motion detectors. A GE NX-8e system will manage the detections and have the potential to be hooked up to any major monitoring company.

### **Lighting Control –**

Your home should be designed to complement your needs. As your needs change throughout the day, your lighting should adapt as well; bright to read a book, but dim for computer use. A lighting control system provides convenient access to light control, creating a comfortable atmosphere to support your activities throughout the day.

We have provided a design and budget for a Lutron RADIO RAA2 lighting system with wireless dimmers and keypads through our all main living areas; this system can be expanded at any point.



#### **Motorized Shades –**

Lutron roller shades create the perfect light for any space or activity with an offering of sheer, dim-out, and blackout fabrics. Choose a sheer to maintain view while diffusing UV rays that may damage furnishings. Dim-out fabrics provide privacy while blackout fabrics are 100% opaque to eliminate all daylight. We have roughed in for 12 shades throughout the main living areas.

We appreciate the opportunity to design and rough in this system for you and the future homeowner.

Sincerely,

Thomas McKenzie  
CEO

970 819 7182  
[www.teamc9.com](http://www.teamc9.com)

2670 Copper Ridge Circle, Unit 14,  
Steamboat Springs, CO, 80487



## Security System

### Unassigned

---

- 1 **GE Security NX-148E-RF**
  
- 1 **GE Security NX-216E**  
16-Zone Expander Module, NX-8E Microprocessor Controlled 8-16-Zone Hardwire Expander Module for the NX-8E. Maximum-Zone Count of 192. Can Be Mounted Up to 2500' From the Control Panel
  
- 1 **GE Security NX-450**  
Wireless surface mount door contact
  
- 1 **GE Security NX-8-KIT**  
NX-8 Kit w/NX-108E Keypad and Transformer. Kit Includes NX-8 Panel, NX-108E LED Keypad, 16.5VAC, 40VA Transformer
  
- 2 **GRI 2600**  
12 Volt DC Surface Mount Water Sensor
  
- 3 **GRI 8080-T**  
3/4" Recessed Steel Door/Closed Loop/Terminal, Available in White, Brown, Grey and Black Color
  
- 1 **System Sensor COSMOD2W**  
I4 series 2-wire combination smoke/carbon monoxide detector interface module
  
- 2 **System Sensor MHW**  
12/24-volt mini-horn

SMC\_Fox Ridge



## Security System

- 1 **System Sensor P2R**  
Two-wire horn strobe with selectable strobe
- 2 **Winland Electronics, Inc MTA-1**  
Slimline temperature alert sensor

*Unassigned Total:*

### Downstairs Bedroom Hall

---

- 1 **System Sensor COSMO-2W**  
Best-in-class 2-wire carbon monoxide and smoke detector

*Downstairs Bedroom Hall Total:*

### Bedroom 111

---

- 1 **System Sensor COSMO-2W**  
Best-in-class 2-wire carbon monoxide and smoke detector

*Bedroom 111 Total:*

### Bedroom 113

---

- 1 **System Sensor COSMO-2W**  
Best-in-class 2-wire carbon monoxide and smoke detector

*Bedroom 113 Total:*

### Living Room 202

---

- 1 **System Sensor COSMO-2W**  
Best-in-class 2-wire carbon monoxide and smoke detector

*Living Room 202 Total:*

SMC\_Fox Ridge



## Security System

### Master Hallway

---

- 1 **System Sensor COSMO-2W**  
Best-in-class 2-wire carbon monoxide and smoke detector

*Master Hallway Total:*

### Master Bed 213

---

- 1 **System Sensor COSMO-2W**  
Best-in-class 2-wire carbon monoxide and smoke detector

*Master Bed 213 Total:*

### Guest Master 216

---

- 1 **System Sensor COSMO-2W**  
Best-in-class 2-wire carbon monoxide and smoke detector

*Guest Master 216 Total:*

*Security System Total:*

---



## Infrastructure and Trim

### Unassigned

---

- 3 SEC - DOOR CONTACT  
Wiring for security system door contact
  
- 2 SEC - LOW TEMP
  
- 3 SEC - WATER BUG
  
- 1 SERVICES - DMARC

*Unassigned Total:*

### Garage 100

---

- 1 NET - 2  
Wire and trim for 2 network wall jacks
  
- 1 SEC - HEAT  
Wiring for security system heat sensor

*Garage 100 Total:*

### Family Room 109

---

- 1 NET - 2  
Wire and trim for 2 network wall jacks
  
- 1 SPEAKER - LCR

SMC\_Fox Ridge



## Infrastructure and Trim

### Unassigned

---

- 3 SEC - DOOR CONTACT  
Wiring for security system door contact
  
- 2 SEC - LOW TEMP
  
- 3 SEC - WATER BUG
  
- 1 SERVICES - DMARC

*Unassigned Total:*

### Garage 100

---

- 1 NET - 2  
Wire and trim for 2 network wall jacks
  
- 1 SEC - HEAT  
Wiring for security system heat sensor

*Garage 100 Total:*

### Family Room 109

---

- 1 NET - 2  
Wire and trim for 2 network wall jacks
  
- 1 SPEAKER - LCR

SMC\_Fox Ridge



## Infrastructure and Trim

- 1 **SPEAKER - STEREO**  
Wiring for a pair of speakers

- 1 **TV - 2**  
Wiring and trim for a tv location

*Family Room 109 Total:*

## Downstairs Bedroom Hall

---

- 1 **SEC - SMOKE**  
Wiring for security system smoke detector

*Downstairs Bedroom Hall Total:*

## Bedroom 111

---

- 1 **NET - 2**  
Wire and trim for 2 network wall jacks
  
- 1 **SEC - SMOKE**  
Wiring for security system smoke detector
  
- 1 **TV - 2**  
Wiring and trim for a tv location

*Bedroom 111 Total:*

## Bedroom 113

---

- 1 **NET - 2**  
Wire and trim for 2 network wall jacks

SMC\_Fox Ridge



## Infrastructure and Trim

- 1 **SEC - SMOKE**  
Wiring for security system smoke detector
  
- 1 **TV - 2**  
Wiring and trim for a tv location

*Bedroom 113 Total:*

## Electrical 102

---

- 1 **SEC - SMOKE**  
Wiring for security system smoke detector

*Electrical 102 Total:*

## Patio 200

---

- 1 **SPEAKER - STEREO**  
Wiring for a pair of speakers

*Patio 200 Total:*

## Living Room 202

---

- 1 **NET - 2**  
Wire and trim for 2 network wall jacks
  
- 1 **SEC - SMOKE**  
Wiring for security system smoke detector
  
- 1 **SPEAKER - STEREO**  
Wiring for a pair of speakers

SMC\_Fox Ridge



## Infrastructure and Trim

- 1 **TV - 2**  
Wiring and trim for a tv location

*Living Room 202 Total:*

### Dining Room 203

---

- 1 **SPEAKER - STEREO**  
Wiring for a pair of speakers

*Dining Room 203 Total:*

### Kitchen 204

---

- 1 **NET - 2**  
Wire and trim for 2 network wall jacks
  
- 1 **SEC - HEAT**  
Wiring for security system heat sensor
  
- 1 **SPEAKER - STEREO**  
Wiring for a pair of speakers

*Kitchen 204 Total:*

### Office 206

---

- 1 **NET - 2**  
Wire and trim for 2 network wall jacks
  
- 1 **SPEAKER - STEREO**  
Wiring for a pair of speakers

SMC\_Fox Ridge



## Infrastructure and Trim

- 1 **TV - 2**  
Wiring and trim for a tv location

*Office 206 Total:*

### Master Hallway

---

- 1 **SEC - SMOKE**  
Wiring for security system smoke detector

*Master Hallway Total:*

### Master Bath 211

---

- 1 **SPEAKER - STEREO**  
Wiring for a pair of speakers

*Master Bath 211 Total:*

### Master Bed 213

---

- 1 **NET - 2**  
Wire and trim for 2 network wall jacks
  
- 1 **SEC - SMOKE**  
Wiring for security system smoke detector
  
- 1 **SPEAKER - STEREO**  
Wiring for a pair of speakers
  
- 1 **TV - 2**  
Wiring and trim for a tv location

SMC\_Fox Ridge



## Infrastructure and Trim

*Master Bed 213 Total:*

### Guest Master 216

---

- 1 **NET - 2**  
Wire and trim for 2 network wall jacks
  
- 1 **SEC - SMOKE**  
Wiring for security system smoke detector
  
- 1 **TV - 2**  
Wiring and trim for a tv location

*Guest Master 216 Total:*

---

Infrastructure and Trim Total:

---

## Window Treatments

### Through Out

---

- 12 **SHADE**  
Wiring for shade control

*Through Out Total:*

---

Window Treatments Total:

---



## Lighting Control

### Unassigned

---

- 4 **Lutron LQRJ-WPM-6P**  
Wireless wallbox power module, 120 V/ 220-240 V, 16 A
  
- 5 **Lutron RRD-W6BRL-XX**  
6-button seeTouch wall mount keypad with raise/lower

*Unassigned Total:*

### Stairs

---

- 2 **Lutron RRD-W6BRL-XX**  
6-button seeTouch wall mount keypad with raise/lower

*Stairs Total:*

### Mudroom

---

- 1 **Lutron RR-AUX-REP-WH**  
Auxiliary repeater, 120 V

*Mudroom Total:*

### Family Room 109

---

- 1 **Lutron RRD-W6BRL-XX**  
6-button seeTouch wall mount keypad with raise/lower

*Family Room 109 Total:*

### Living Room 202

---

- 2 **Lutron RRD-W6BRL-XX**  
6-button seeTouch wall mount keypad with raise/lower

SMC\_Fox Ridge



## Lighting Control

*Living Room 202 Total:*

### Dining Room 203

---

- 1 **Lutron RRD-W6BRL-XX**  
6-button seeTouch wall mount keypad with raise/lower

*Dining Room 203 Total:*

### Kitchen 204

---

- 2 **Lutron RRD-W6BRL-XX**  
6-button seeTouch wall mount keypad with raise/lower

*Kitchen 204 Total:*

*Lighting Control Total:*

---