

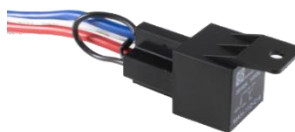
SP3801 Kit



SP3801



*Power Harness



Relay (Optional)



*OBD II Adapter (Optional)

SP3801 Installation Steps

When mounting the SP3801, find a suitable mounting location under the vehicle dash pad. Be sure the label is facing up to ensure a better GPS fix. Measure the voltage at the vehicle battery with the car off. Power to the SP3801 can be taken directly from the battery, fuse box, or at a point near the steering column that has the exact same voltage as the vehicle battery with the car off. A voltage on a wire that is slightly less than the battery voltage indicates that the wire is not directly from the battery and should not be used.

Standard Non-OBD II Install

- Cut the wire shown in figure 1 of the power harness.
- Connect the Red wire of the device power harness to the vehicle's constant battery source.
- Connect the Black wire of the device power harness to chassis ground.
- For the starter interrupt installation follow the steps shown in figure 3.
- To use the starter interrupt feature, connect the White wire from the power harness to ignition source.

OBD II Install

- Connect the power harness and the OBDII pass through cable together as show in figure 1 and 2.
- For the starter interrupt installation follow the steps shown in figure 3.
- To use the starter interrupt feature, connect the White wire from the power harness to ignition source.
- Plug the power harness to the device and secure the device under the vehicle dash pad out of view.

LED Status		
Color	Function	Behavior
Green	Network	Blinking Fast = Searching Blinking Slow = Cell Signal OK
Blue	GPS indicator	Solid ON = GPS OK Blinking Fast = GPS is searching Blinking Slow = No data
Red	Power	Solid ON = Unit is ON

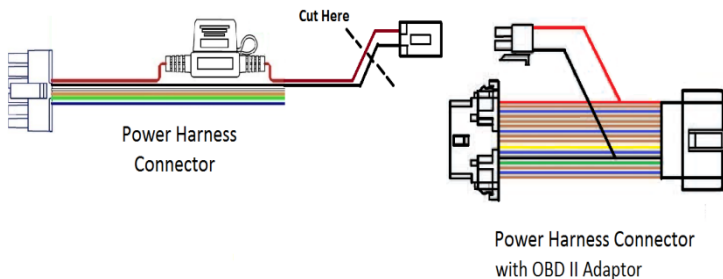


Figure 1

Figure 2

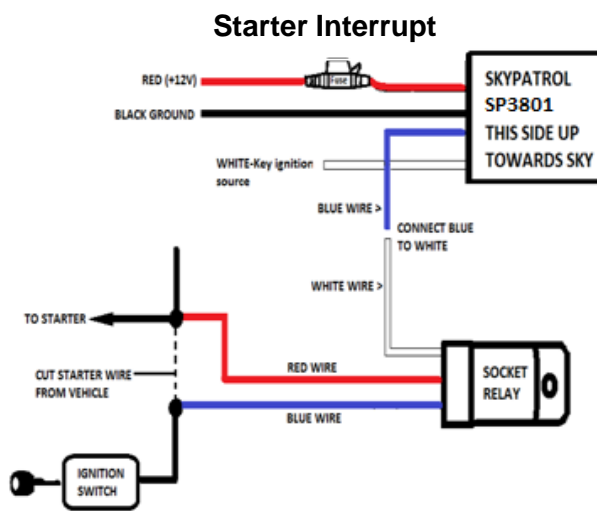


Figure 3

* Power Harness and OBDII Adapter may be soldered as one harness, or available separately.