

GPS Quick Start

- 1 LED Indicator Lights
Blue – GPS
Red – Power
Green – Cellular
- 2 Mini USB Port
- 3 Message Button
- 4 Power Button



BATTERY CHARGING

- Connect AC-DC power adapter to SP8801.
- Plug the AC-DC power adapter into the power outlet.
- The Power LED will flash fast. When the battery is fully charged, the Power LED will stay on.
- It is also possible to charge the SP8801 thru a USB port.
- Complete charging of the battery takes about 5 hours. Please note that before using the SP8801 for the first time you should completely charge the battery for better performance.

TURN ON / TURN OFF

Turn On:

- Option 1: Press the Power Button for at least 3 seconds and release it to turn on the SP8801. The Power LED will light on.
- Option 2: Connect device to charger or external battery, and it will turn on automatically. The Power LED will light on.

Turn Off:

- Press the Power Button for at least 3 seconds; the Power LED will fast flash and then turn off. You will get a vibration feedback as a confirmation. The time it takes to power off depends on the quality of the network at the moment.

MESSAGE BUTTON

- Press and hold the Message Button to initiate the message signal. The device will vibrate as a confirmation.

*Note: to send a notification it is necessary to setup up an alert on the system.

ACCESSORIES

- AC-DC Power Adapter
- Car Kit Charger (optional)

GPS Setup

1 TO GET STARTED

- Go to www.protekgps.com
- Click on **'Register Your Device'**
- Complete the Registration Form
- The system will email you a temporary password
- Login and change your password

*If you have already registered your device just login with your Username and Password

2 LOCATE NOW

- Click on **'Locate Now'** icon
- The system will search for the unit
- You will see a check mark as a confirmation that the command has been processed and will plot its location.

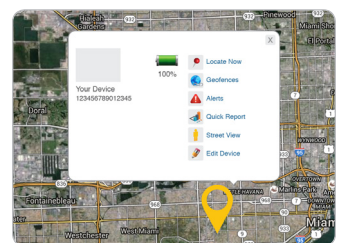
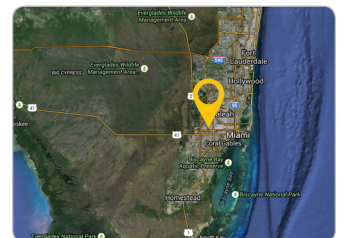
*Right-click on the screen to select a device if you have more than one device in the same account

3 CREATING A GEOFENCE

- Click on **'Geofence'** icon in the device info window or
- Click on **'Admin'** icon and then on **'Geofence'** icon
- Adjust your Geofence preferences

4 SETTING UP NOTIFICATION ALERTS

- Click on **'Geofence'** icon in the device info window or
- Click on **'Admin'** icon and then on **'Alerts'** icon
- Select your Alert preferences. You will have the ability to setup multiple alerts, such as: Low Battery, Wake on Motion, Entering Sleep Mode, Speeding, and Message Button.



(Device Info Window)

Add Geofence

Device Name

Geofence Name *

Location

Radius miles

Slot number:

Create an Event when:

Send Alerts Yes No