



Verification Report

No. HKTEC2104747402

Date : 20 Oct 2021

Page 1 of 12

RUBADUE WIRE CO., INC
5610 BOEING DR.,
LOVELAND CO.,
80538 USA

The test results of item no. 6 to no. 13 are extracted from the test report number HKTEC2104747702 (item no. 11 to no.18) where the sample is claimed to be identical.

Sample Name : TCA

SGS Job No. : 4905563 - HK

Colour : VARIOUS

Sample Receiving Date : 21 Sep 2021

Verification Period : 21 Sep 2021 – 14 Oct 2021

Verification Requested : With reference to GB/T 26572-2011, give the verification of the submitted samples.

Verification Method : Please refer to next page(s)

Verification Result : Please refer to next page(s)

Verification Conclusion : Based on the review of previous reports and verification results of the submitted samples, the results comply with the limit as set by GB/T 26572-2011.

Signed for and on behalf of
SGS Hong Kong Limited

Wong Ka Ming, Polly
Chemist

This document is issued by the Company subject to its General Conditions of Service printed overleaf, available on request or accessible at <http://www.sgs.com/en/Terms-and-Conditions.aspx> and, for electronic format documents, subject to Terms and Conditions for Electronic Documents at <http://www.sgs.com/en/Terms-and-Conditions/Terms-e-Document.aspx>. Attention is drawn to the limitation of liability, indemnification and jurisdiction issues defined therein. Any holder of this document is advised that information contained hereon reflects the Company's findings at the time of its intervention only and within the limits of Client's instructions, if any. The Company's sole responsibility is to its Client and this document does not exonerate parties to a transaction from exercising all their rights and obligations under the transaction documents. This document cannot be reproduced except in full, without prior written approval of the Company. Any unauthorized alteration, forgery or falsification of the content or appearance of this document is unlawful and offenders may be prosecuted to the fullest extent of the law.

Unless otherwise stated the results shown in this test report refer only to the sample(s) tested and such sample(s) are retained for 30 days only.

- Verification Method**
1. Review was performed for the samples disjointed from the submitted articles and the related test reports submitted by the applicant.
 2. Tests was performed for the samples indicated by the photos in this report with reference to GB/T 26125-2011.
(Decision Rule: please refer to appendix 1: Category 6)
(1) Screening by EDXRF spectroscopy;
(2) Wet chemical test method:
 - a. Determination of Lead and Cadmium by ICP-OES or AAS;
 - b. Determination of Mercury by ICP-OES;
 - c. Determination of Hexavalent chromium by Spot test or Colorimetric method;
 - d. Determination of PBBs and PBDEs by GC-MS.

This document is issued by the Company subject to its General Conditions of Service printed overleaf, available on request or accessible at <http://www.sgs.com/en/Terms-and-Conditions.aspx> and, for electronic format documents, subject to Terms and Conditions for Electronic Documents at <http://www.sgs.com/en/Terms-and-Conditions/Terms-e-Document.aspx>. Attention is drawn to the limitation of liability, indemnification and jurisdiction issues defined therein. Any holder of this document is advised that information contained hereon reflects the Company's findings at the time of its intervention only and within the limits of Client's instructions, if any. The Company's sole responsibility is to its Client and this document does not exonerate parties to a transaction from exercising all their rights and obligations under the transaction documents. This document cannot be reproduced except in full, without prior written approval of the Company. Any unauthorized alteration, forgery or falsification of the content or appearance of this document is unlawful and offenders may be prosecuted to the fullest extent of the law.

Unless otherwise stated the results shown in this test report refer only to the sample(s) tested and such sample(s) are retained for 30 days only.

Verification Report

No. HKTEC2104747402

Date : 20 Oct 2021

Page 3 of 12

Details on Verification

Part No.	Part Description	BOM No.	Restricted Substances	Results of EDXRF ⁽¹⁾	Screening Result of PHTH ⁽²⁾	Result of Wet Chemical Testing ⁽³⁾ (mg/kg)	Conclusion on GB/T 26572-2011	Sample Submitted / Resubmitted Date
1	Grey plastic pellet		Cd	BL	---	---	Comply	21 Sep 2021
			Pb	BL	---	---	Comply	
			Hg	BL	---	---	Comply	
			Cr(VI)▼	BL	---	---	Comply	
			PBBs	BL	---	---	Comply	
			PBDEs	BL	---	---	Comply	
2	White plastic pellet		Cd	BL	---	---	Comply	21 Sep 2021
			Pb	BL	---	---	Comply	
			Hg	BL	---	---	Comply	
			Cr(VI)▼	BL	---	---	Comply	
			PBBs	BL	---	---	Comply	
			PBDEs	BL	---	---	Comply	
3	Orange plastic pellet		Cd	BL	---	---	Comply	21 Sep 2021
			Pb	BL	---	---	Comply	
			Hg	BL	---	---	Comply	
			Cr(VI)▼	BL	---	---	Comply	
			PBBs	BL	---	---	Comply	
			PBDEs	BL	---	---	Comply	
4	Translucent plastic pellet		Cd	BL	---	---	Comply	21 Sep 2021
			Pb	BL	---	---	Comply	
			Hg	BL	---	---	Comply	
			Cr(VI)▼	BL	---	---	Comply	
			PBBs	BL	---	---	Comply	
			PBDEs	BL	---	---	Comply	
5	Blue plastic pellet		Cd	BL	---	---	Comply	21 Sep 2021
			Pb	BL	---	---	Comply	
			Hg	BL	---	---	Comply	
			Cr(VI)▼	BL	---	---	Comply	
			PBBs	BL	---	---	Comply	
			PBDEs	BL	---	---	Comply	
6	Coppery metal - Wire		Cd	BL	---	---	Comply	21 Sep 2021
			Pb	BL	---	---	Comply	
			Hg	BL	---	---	Comply	
			Cr(VI)▼	BL	---	---	Comply	
			PBBs	---	---	---	---	
			PBDEs	---	---	---	---	
7	Coppery metal - Wire		Cd	BL	---	---	Comply	21 Sep 2021
			Pb	BL	---	---	Comply	
			Hg	BL	---	---	Comply	
			Cr(VI)▼	BL	---	---	Comply	
			PBBs	---	---	---	---	
			PBDEs	---	---	---	---	
8	Silvery metal plating - Wire		Cd	BL	---	---	Comply	21 Sep 2021
			Pb	BL	---	---	Comply	
			Hg	BL	---	---	Comply	
			Cr(VI)▼	BL	---	---	Comply	
			PBBs	---	---	---	---	
			PBDEs	---	---	---	---	

This document is issued by the Company subject to its General Conditions of Service printed overleaf, available on request or accessible at <http://www.sgs.com/en/Terms-and-Conditions.aspx> and, for electronic format documents, subject to Terms and Conditions for Electronic Documents at <http://www.sgs.com/en/Terms-and-Conditions/Terms-e-Documents.aspx>. Attention is drawn to the limitation of liability, indemnification and jurisdiction issues defined therein. Any holder of this document is advised that information contained hereon reflects the Company's findings at the time of its intervention only and within the limits of Client's instructions, if any. The Company's sole responsibility is to its Client and this document does not exonerate parties to a transaction from exercising all their rights and obligations under the transaction documents. This document cannot be reproduced except in full, without prior written approval of the Company. Any unauthorized alteration, forgery or falsification of the content or appearance of this document is unlawful and offenders may be prosecuted to the fullest extent of the law.

Unless otherwise stated the results shown in this test report refer only to the sample(s) tested and such sample(s) are retained for 30 days only.

Verification Report

No. HKTEC2104747402

Date : 20 Oct 2021

Page 4 of 12

Details on Verification

Part No.	Part Description	BOM No.	Restricted Substances	Results of EDXRF ⁽¹⁾	Screening Result of PHTH ⁽²⁾	Result of Wet Chemical Testing ⁽³⁾ (mg/kg)	Conclusion on GB/T 26572-2011	Sample Submitted / Resubmitted Date
9	Coppery metal - Wire		Cd	BL	---	---	Comply	21 Sep 2021
			Pb	BL	---	---	Comply	
			Hg	BL	---	---	Comply	
			Cr(VI)▼	BL	---	---	Comply	
			PBBs	---	---	---	---	
			PBDEs	---	---	---	---	
10	Silvery metal plating - Wire		Cd	BL	---	---	Comply	21 Sep 2021
			Pb	BL	---	---	Comply	
			Hg	BL	---	---	Comply	
			Cr(VI)▼	BL	---	---	Comply	
			PBBs	---	---	---	---	
			PBDEs	---	---	---	---	
11	Coppery metal - Wire		Cd	BL	---	---	Comply	21 Sep 2021
			Pb	BL	---	---	Comply	
			Hg	BL	---	---	Comply	
			Cr(VI)▼	BL	---	---	Comply	
			PBBs	---	---	---	---	
			PBDEs	---	---	---	---	
12	Red metal plating - Wire		Cd	BL	---	---	Comply	21 Sep 2021
			Pb	BL	---	---	Comply	
			Hg	BL	---	---	Comply	
			Cr(VI)▼	BL	---	---	Comply	
			PBBs	---	---	---	---	
			PBDEs	---	---	---	---	
13	Coppery metal - Wire		Cd	BL	---	---	Comply	21 Sep 2021
			Pb	BL	---	---	Comply	
			Hg	BL	---	---	Comply	
			Cr(VI)▼	BL	---	---	Comply	
			PBBs	---	---	---	---	
			PBDEs	---	---	---	---	

This document is issued by the Company subject to its General Conditions of Service printed overleaf, available on request or accessible at <http://www.sgs.com/en/Terms-and-Conditions.aspx> and, for electronic format documents, subject to Terms and Conditions for Electronic Documents at <http://www.sgs.com/en/Terms-and-Conditions/Terms-e-Documents.aspx>. Attention is drawn to the limitation of liability, indemnification and jurisdiction issues defined therein. Any holder of this document is advised that information contained hereon reflects the Company's findings at the time of its intervention only and within the limits of Client's instructions, if any. The Company's sole responsibility is to its Client and this document does not exonerate parties to a transaction from exercising all their rights and obligations under the transaction documents. This document cannot be reproduced except in full, without prior written approval of the Company. Any unauthorized alteration, forgery or falsification of the content or appearance of this document is unlawful and offenders may be prosecuted to the fullest extent of the law.

Unless otherwise stated the results shown in this test report refer only to the sample(s) tested and such sample(s) are retained for 30 days only.

Remark

- (1) (a) There are the results on total Br while test items on restricted substances are PBBs and PBDEs; There is the result on total Cr while test item on restricted substances is Cr(VI).
- (b) Results are obtained by EDXRF for primary screening, and further chemical testing by ICP-OES (for Cd, Pb, Hg), UV-Vis (for Cr(VI)) and GC-MS (for PBBs, PBDEs) is recommended to be performed, if the concentration exceeds the below warning value according to GB/T 26125-2011 (unit: mg/kg)

Element	Polymer	Metal	Composite Materials
Cd	$BL \leq (70-3\sigma) < X < (130+3\sigma) \leq OL$	$BL \leq (70-3\sigma) < X < (130+3\sigma) \leq OL$	$LOD < X < (150+3\sigma) \leq OL$
Pb	$BL \leq (700-3\sigma) < X < (1300+3\sigma) \leq OL$	$BL \leq (700-3\sigma) < X < (1300+3\sigma) \leq OL$	$BL \leq (500-3\sigma) < X < (1500+3\sigma) \leq OL$
Hg	$BL \leq (700-3\sigma) < X < (1300+3\sigma) \leq OL$	$BL \leq (700-3\sigma) < X < (1300+3\sigma) \leq OL$	$BL \leq (500-3\sigma) < X < (1500+3\sigma) \leq OL$
Br	$BL \leq (300-3\sigma) < X$	--	$BL \leq (250-3\sigma) < X$
Cr	$BL \leq (700-3\sigma) < X$	$BL \leq (700-3\sigma) < X$	$BL \leq (500-3\sigma) < X$

(c) BL = Below Limit, OL = Over Limit, IN= Inconclusive, LOD = Limit of Detection, -- = Not regulated, σ = Standard deviation of test results.

- (2) (a) mg/kg = 0.0001%, MDL=Method detection limit, ND = Not Detected (<MDL), --- = Not conducted, - = Without BOM.

(b) Unit and MDL in wet chemical test

Test Item	Pb	Cd	Hg
Unit	mg/kg	mg/kg	mg/kg
MDL	10	10	10

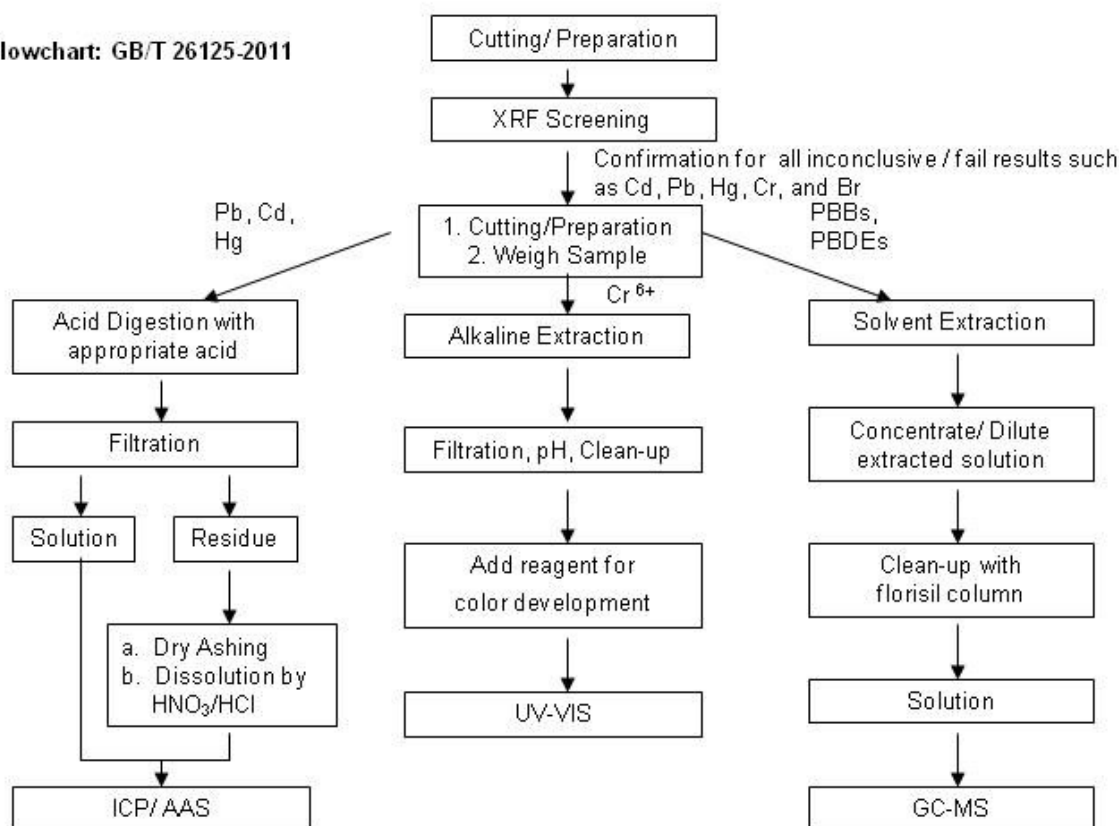
The MDL for single compound of PBBs and PBDEs is 100 mg/kg;
MDL of Cr(VI) for polymer and composite sample is 10 mg/kg.

- (c) According to GB/T 26125-2011, result on Cr(VI) for metal sample is shown as Positive/Negative.
Positive = Presence of Cr(VI) coating, Negative = Absence of Cr(VI) coating.

Appendix 1

Category	Decision Rule Statement
1	<p>The decision rule for conformity reporting is based on the non-binary statement with guard band (is equal to the expanded measurement uncertainty with a 95% coverage probability, $w = U95$) in ILAC-G8:09/2019 Clause 4.2.3.</p> <p>A. "Pass - the measured value is within (or below / above) the acceptance limit, where the acceptance limit is below / above to the guard band." or "Pass - The measured values were observed in tolerance at the points tested. The specific false accept risk is up to 2.5%."</p> <p>B. "Conditional Pass - The measured values were observed in tolerance at the points tested. However, a portion of the expanded measurement uncertainty intervals about one or more measured values exceeded / out of tolerance. When the measured result is close to the tolerance, the specific false accept risk is up to 50%."</p> <p>C. "Conditional Fail - One or more measured values were observed out of tolerance at the points tested. However, a portion of the expanded measurement uncertainty intervals about one or more measured values were in tolerance. When the measured result is close to the tolerance, the specific false reject risk is up to 50%."</p> <p>D. "Fail - the measured value is out of (or below / above) the tolerance limit added / subtracted to the guard band." or "Fail - One or more measured values were observed out of tolerance at the points tested". The specific false reject risk is up to 2.5%.</p>
2	<p>The decision rule for conformity reporting is based on BS EN 1811:2011+A1:2015: Reference test method for release of nickel from all post assemblies which are inserted into pierced parts of the human body and articles intended to come into direct and prolonged contact with the skin in Section 9.2 interpretation of results.</p>
3	<p>The decision rule for conformity reporting is based on the general consideration of simple acceptance as stated in ISO/IEC Guide 98-3: "Uncertainty of measurement - Part 3: Guide to the expression of uncertainty in measurement (GUM 1995)", and more specifically for analytical measurements to the EURACHEM/CITAC Guide 2012 "Quantifying Uncertainty in Analytical Measurement".</p>
4	<p>The decision rule for conformity reporting is according to the IEC 62321-7-1 Edition 1.0 2015-09 Section 7: Table 1-(comparison to standard and interpretation of result)</p>
5	<p>The decision rule for conformity reporting is according to the IEC 62321-3-1 Edition 1.0 2013-06 Annex A.3 interpretation of result.</p>
6	<p>The decision rule for conformity reporting is according to the GB/T 26125-2011 Annex A to H</p>
7	<p>The decision rule for conformity reporting is according to the requested specification or standard (ASTM F963-17 section 4.3.5)</p>
8	<p>The decision rule for conformity reporting is according to the requested specification or standard (AS/NZS ISO 8124 Part 3 section 4.2)</p>
Remark	<p>If the decision rule is not feasible to be used and the uncertainty of the result is able to be provided, the uncertainty range of the result will be shown in the report. Otherwise, only result will be shown in the report.</p>

Flowchart: GB/T 26125-2011



- Note : 1) Boiling water test method was also performed for the analysis of Cr (VI) in metal sample.
 2) The polymeric samples were dissolved totally by pre-conditioning method according to above flow chat for Cd, Pb and Hg contents analysis.

Operator : Keith Fung (XRF)
Chiu Kan Yuen/ Tang Koon Pang (Acid digestion)
Chiu Kan Yuen (Dry Ashing)
Nick Liu (Hexavalent Chromium)
Kent Wan (PBBs and PBDEs)

Section Chief : Chan Chun Kit, Dickson

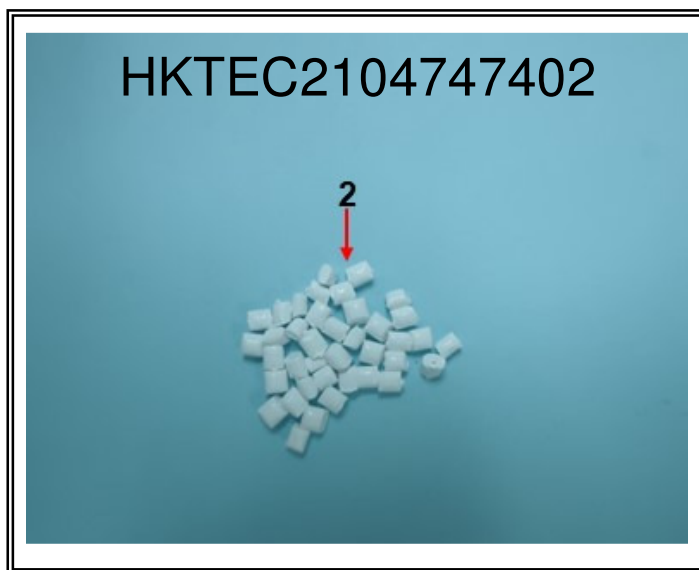
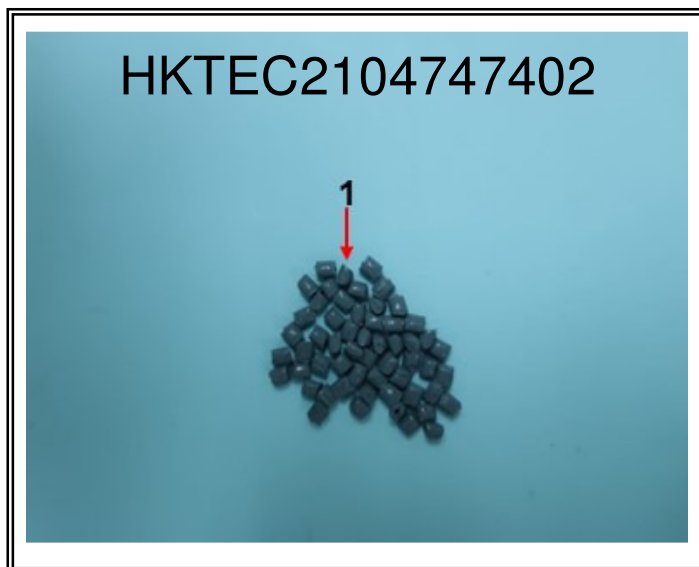
Verification Report

No. HKTEC2104747402

Date : 20 Oct 2021

Page 8 of 12

Sample photo:



SGS authenticate the photo on original report only

This document is issued by the Company subject to its General Conditions of Service printed overleaf, available on request or accessible at <http://www.sgs.com/en/Terms-and-Conditions.aspx> and, for electronic format documents, subject to Terms and Conditions for Electronic Documents at <http://www.sgs.com/en/Terms-and-Conditions/Terms-e-Documents.aspx>. Attention is drawn to the limitation of liability, indemnification and jurisdiction issues defined therein. Any holder of this document is advised that information contained hereon reflects the Company's findings at the time of its intervention only and within the limits of Client's instructions, if any. The Company's sole responsibility is to its Client and this document does not exonerate parties to a transaction from exercising all their rights and obligations under the transaction documents. This document cannot be reproduced except in full, without prior written approval of the Company. Any unauthorized alteration, forgery or falsification of the content or appearance of this document is unlawful and offenders may be prosecuted to the fullest extent of the law.

Unless otherwise stated the results shown in this test report refer only to the sample(s) tested and such sample(s) are retained for 30 days only.

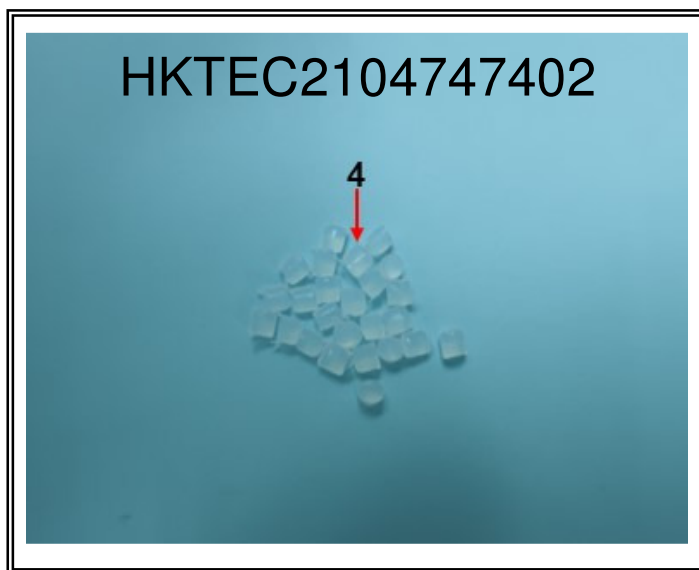
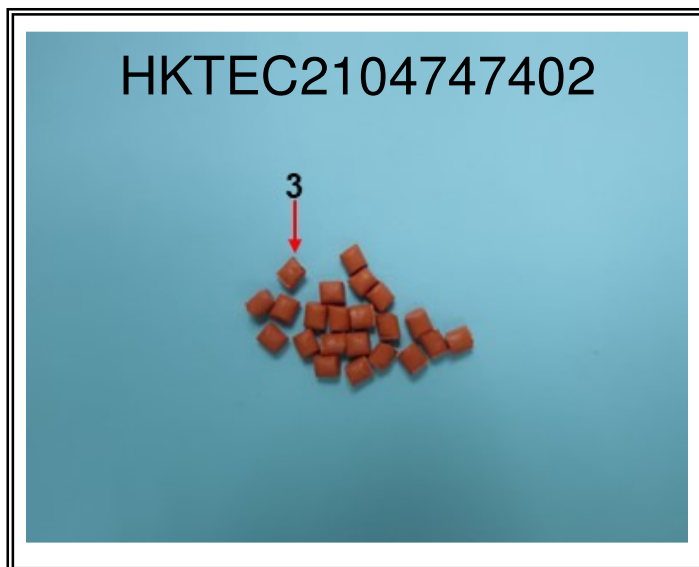
Verification Report

No. HKTEC2104747402

Date : 20 Oct 2021

Page 9 of 12

Sample photo:



SGS authenticate the photo on original report only

This document is issued by the Company subject to its General Conditions of Service printed overleaf, available on request or accessible at <http://www.sgs.com/en/Terms-and-Conditions.aspx> and, for electronic format documents, subject to Terms and Conditions for Electronic Documents at <http://www.sgs.com/en/Terms-and-Conditions/Terms-e-Document.aspx>. Attention is drawn to the limitation of liability, indemnification and jurisdiction issues defined therein. Any holder of this document is advised that information contained hereon reflects the Company's findings at the time of its intervention only and within the limits of Client's instructions, if any. The Company's sole responsibility is to its Client and this document does not exonerate parties to a transaction from exercising all their rights and obligations under the transaction documents. This document cannot be reproduced except in full, without prior written approval of the Company. Any unauthorized alteration, forgery or falsification of the content or appearance of this document is unlawful and offenders may be prosecuted to the fullest extent of the law.

Unless otherwise stated the results shown in this test report refer only to the sample(s) tested and such sample(s) are retained for 30 days only.

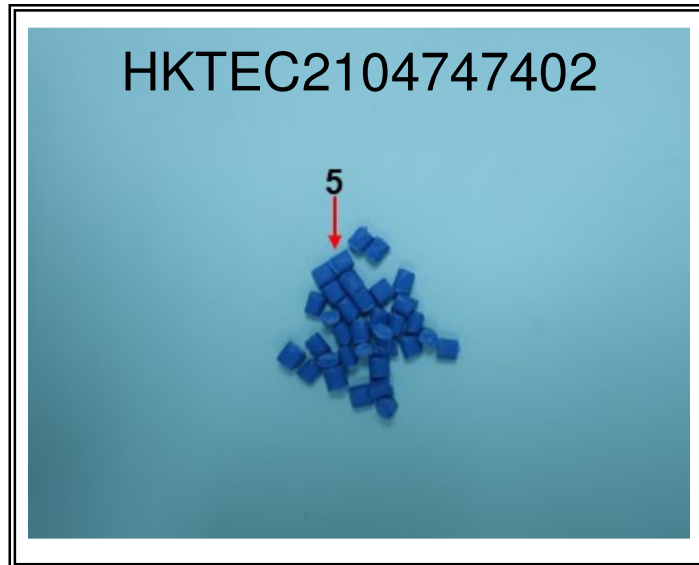
Verification Report

No. HKTEC2104747402

Date : 20 Oct 2021

Page 10 of 12

Sample photo:



SGS authenticate the photo on original report only

This document is issued by the Company subject to its General Conditions of Service printed overleaf, available on request or accessible at <http://www.sgs.com/en/Terms-and-Conditions.aspx> and, for electronic format documents, subject to Terms and Conditions for Electronic Documents at <http://www.sgs.com/en/Terms-and-Conditions/Terms-e-Documents.aspx>. Attention is drawn to the limitation of liability, indemnification and jurisdiction issues defined therein. Any holder of this document is advised that information contained hereon reflects the Company's findings at the time of its intervention only and within the limits of Client's instructions, if any. The Company's sole responsibility is to its Client and this document does not exonerate parties to a transaction from exercising all their rights and obligations under the transaction documents. This document cannot be reproduced except in full, without prior written approval of the Company. Any unauthorized alteration, forgery or falsification of the content or appearance of this document is unlawful and offenders may be prosecuted to the fullest extent of the law.

Unless otherwise stated the results shown in this test report refer only to the sample(s) tested and such sample(s) are retained for 30 days only.

Verification Report

No. HKTEC2104747402

Date : 20 Oct 2021

Page 11 of 12

Sample photo:



SGS authenticate the photo on original report only

This document is issued by the Company subject to its General Conditions of Service printed overleaf, available on request or accessible at <http://www.sgs.com/en/Terms-and-Conditions.aspx> and, for electronic format documents, subject to Terms and Conditions for Electronic Documents at <http://www.sgs.com/en/Terms-and-Conditions/Terms-e-Documents.aspx>. Attention is drawn to the limitation of liability, indemnification and jurisdiction issues defined therein. Any holder of this document is advised that information contained hereon reflects the Company's findings at the time of its intervention only and within the limits of Client's instructions, if any. The Company's sole responsibility is to its Client and this document does not exonerate parties to a transaction from exercising all their rights and obligations under the transaction documents. This document cannot be reproduced except in full, without prior written approval of the Company. Any unauthorized alteration, forgery or falsification of the content or appearance of this document is unlawful and offenders may be prosecuted to the fullest extent of the law.

Unless otherwise stated the results shown in this test report refer only to the sample(s) tested and such sample(s) are retained for 30 days only.

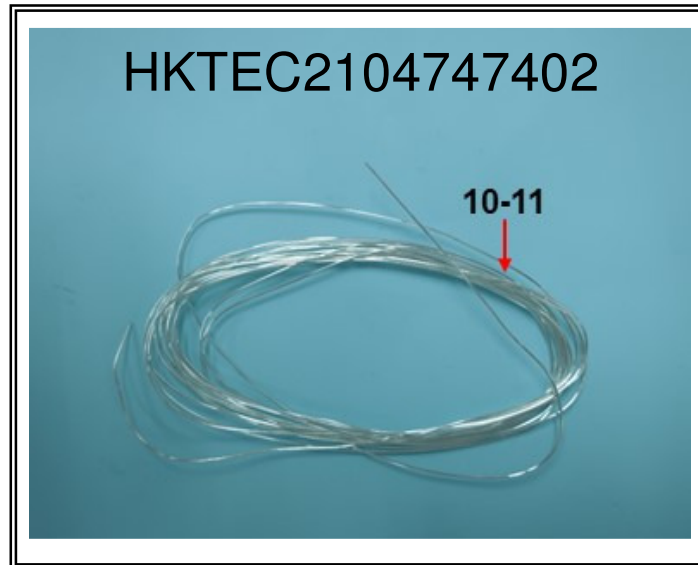
Verification Report

No. HKTEC2104747402

Date : 20 Oct 2021

Page 12 of 12

Sample photo:



SGS authenticate the photo on original report only

*** End of Report ***

This document is issued by the Company subject to its General Conditions of Service printed overleaf, available on request or accessible at <http://www.sgs.com/en/Terms-and-Conditions.aspx> and, for electronic format documents, subject to Terms and Conditions for Electronic Documents at <http://www.sgs.com/en/Terms-and-Conditions/Terms-e-Document.aspx>. Attention is drawn to the limitation of liability, indemnification and jurisdiction issues defined therein. Any holder of this document is advised that information contained hereon reflects the Company's findings at the time of its intervention only and within the limits of Client's instructions, if any. The Company's sole responsibility is to its Client and this document does not exonerate parties to a transaction from exercising all their rights and obligations under the transaction documents. This document cannot be reproduced except in full, without prior written approval of the Company. Any unauthorized alteration, forgery or falsification of the content or appearance of this document is unlawful and offenders may be prosecuted to the fullest extent of the law.

Unless otherwise stated the results shown in this test report refer only to the sample(s) tested and such sample(s) are retained for 30 days only.