

**DEER PARK DEVELOPMENT CORP**

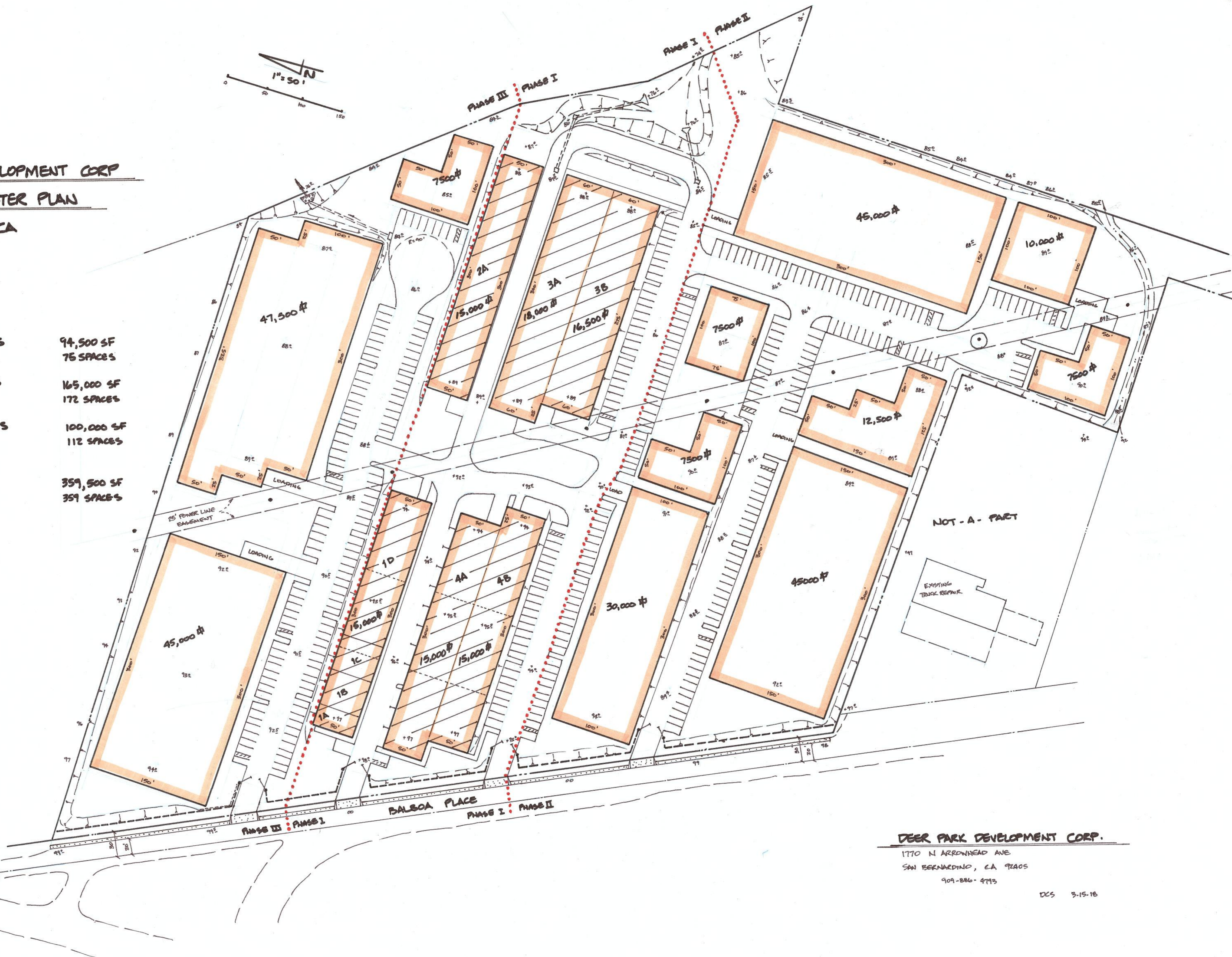
**CONCEPTUAL MASTER PLAN**

**NEEDLES, CA**

3-15-16 DCS

**SITE SUMMARY**

PHASE I: EXISTING BUILDINGS PARKING	94,500 SF 75 SPACES
PHASE II: PROPOSED BUILDINGS PARKING	165,000 SF 172 SPACES
PHASE III: PROPOSED BUILDINGS PARKING	100,000 SF 112 SPACES
<b>TOTAL: BUILDINGS PARKING</b>	<b>359,500 SF 359 SPACES</b>



**DEER PARK DEVELOPMENT CORP.**

1770 N ARROWHEAD AVE  
SAN BERNARDINO, CA 92405  
909-886-4773

DCS 3-15-16