

**PROPERTY OWNER
& APPLICANT:**

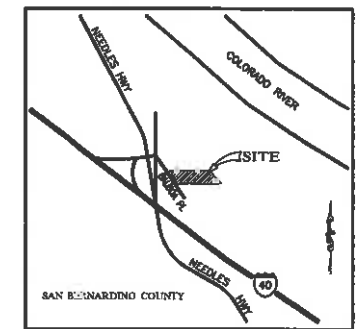
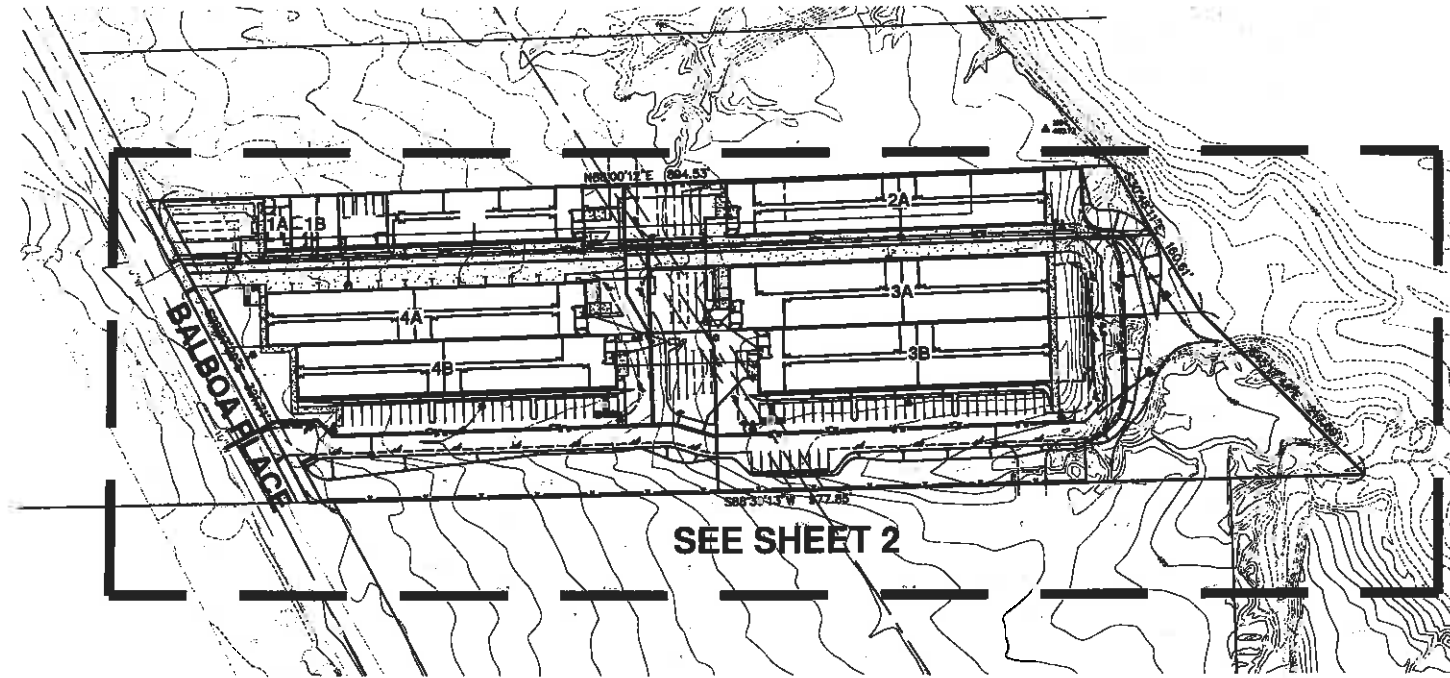
DEER PARK DEVELOPMENT CORP.
1770 N. ARROWHEAD AVENUE
SAN BERNARDINO, CA 92405
(909) 886-4793

PREPARED BY:

W.J. MCKEEVER INC.
900 E. WASHINGTON STREET, SUITE 208
COLTON, CA 92324
(909)-825-8048

NOTES:

1. THIS SITE PLAN SERVES AS THE MASTER PLAN FOR EIGHT CONCURRENTLY FILED CUP'S. ONE CUP IS FOR DISTRIBUTION OF MEDICAL MARIJUANA; ONE CUP IS FOR MANUFACTURE OF MEDICAL MARIJUANA PRODUCTS; AND SIX CUP'S ARE FOR CULTIVATION OF MEDICAL MARIJUANA.
2. THE PROPERTY CONSISTS OF ASSESSOR'S PARCELS 0890-081-10 THROUGH 18, INCLUSIVE. GROSS AREA OF ALL PARCELS = 6.27 AC.
* NOTE: A LOT LINE ADJUSTMENT / LOT MERGER APPLICATION HAS BEEN FILED CONCURRENTLY TO MERGE THE EXISTING 6 PARCELS INTO 4 PARCELS. THE NEW LOT LINES WILL FIT THE 4 BUILDING CLUSTERS.
3. THE EXISTING AND PROPOSED GENERAL PLAN DESIGNATION IS HIGHWAY COMMERCIAL (CH). THE EXISTING AND PROPOSED ZONING IS (C-3).
4. THE BUILDINGS SHOWN ARE EXISTING PRE-FAB METAL BUILDINGS, AND ARE CURRENTLY BEING USED AS A BOAT STORAGE FACILITY "RIVER TOYS RV STORAGE".
5. EXISTING AND PROPOSED SQUARE FOOTAGE IS AS FOLLOWS:
BUILDING 1: 15,000 SF
BUILDING 2: 15,000 SF
BUILDING 3A: 18,000 SF
BUILDING 3B: 18,500 SF
BUILDING 4A: 15,000 SF
BUILDING 4B: 15,000 SF
TOTAL 94,500 SF
6. WATER SERVICE: CITY OF NEEDLES.
7. SEWER SERVICE: ONSITE SEPTIC SYSTEMS.
8. ELECTRIC SERVICE: CITY OF NEEDLES PUBLIC UTILITY AUTHORITY.
9. THIS PROJECT WILL COMPLY WITH NPDS SUPPLEMENT "A" REQUIREMENTS.
10. PROPERTY ADDRESS: 320 BALBOA PLACE, NEEDLES, CA 92363
11. THE OWNER, DEER PARK DEVELOPMENT CORP., OWNS THE PROPERTIES ADJACENT TO THE NORTH AND SOUTH. THIS SITE PLAN HAS BEEN DESIGNED TO ALLOW EXPANSION TO THE NORTH AND SOUTH. ACCESS DRIVES HAVE BEEN STUBBED OUT AND THE PROPOSED 1' TEMPORARY SECURITY FENCE ON THE NORTH AND SOUTH BOUNDARIES WILL BE REMOVED AND RELOCATED AS THE PROJECT EXPANDS.



VICINITY MAP
N.T.S.

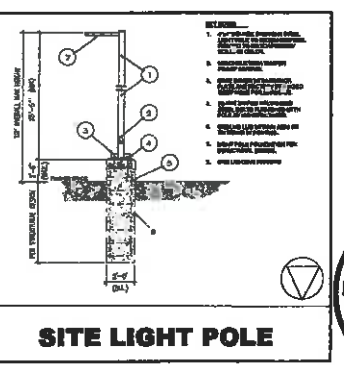
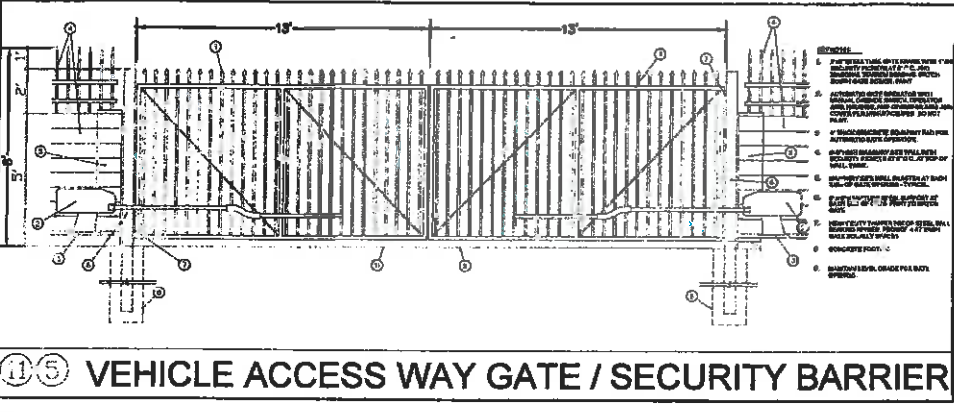
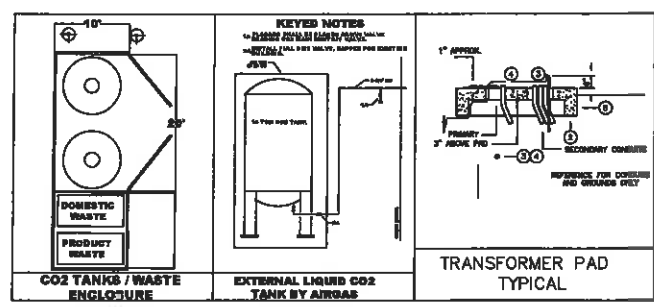
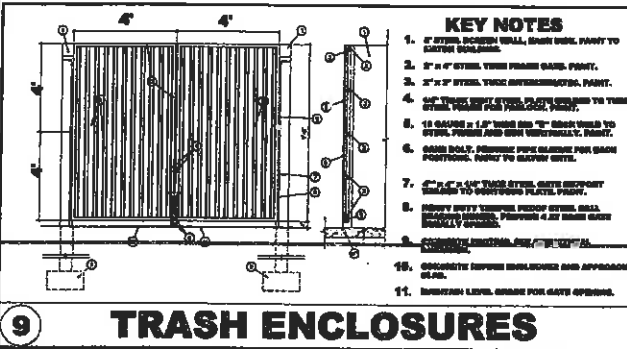
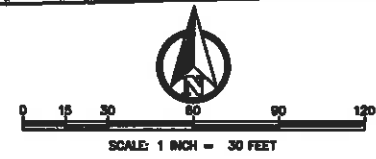
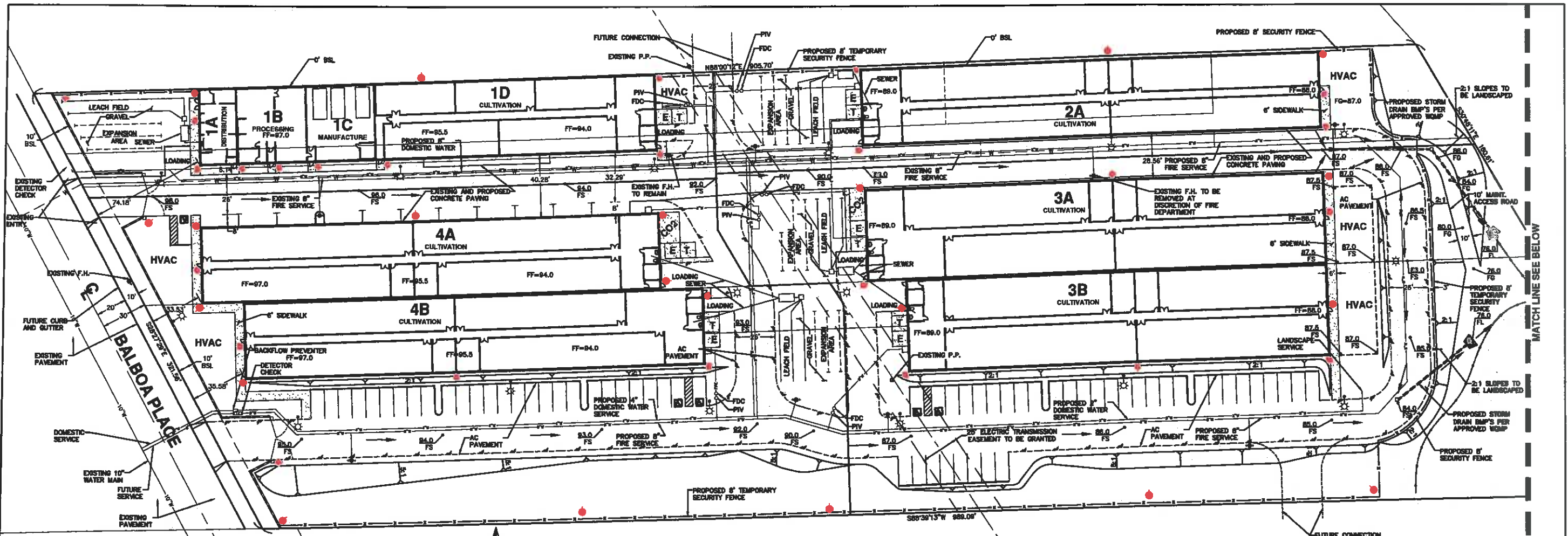


W.J. MCKEEVER, INC.
CIVIL ENGINEERING
900 E. WASHINGTON STREET, SUITE 208
COLTON, CALIFORNIA 92324
TEL: (909) 825-8048
FAX: (909) 825-8039
William J. McKeever
WILLIAM J. MCKEEVER, P.E. 22502
11/28/17
DATE

DEER PARK DEVELOPMENT CORP.
1770 N. ARROWHEAD AVE.
SAN BERNARDINO, CA 92405
909-886-4793

**SITE PLAN
TITLE SHEET
MEDICAL MARIJUANA FACILITY**
320 BALBOA PL
NEEDLES, CA
92363
11-30-17

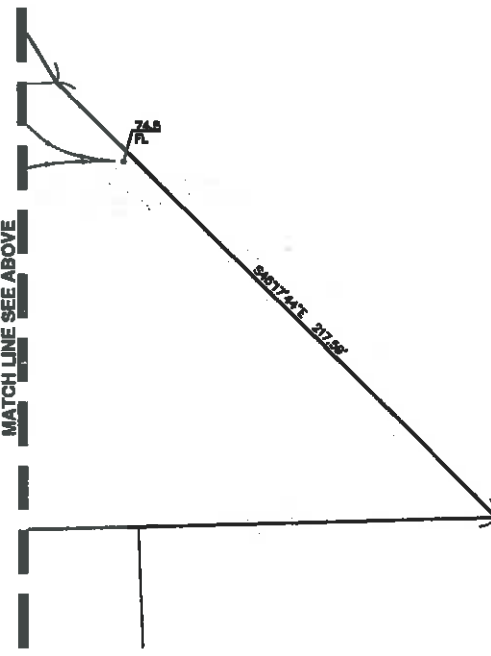
SHEET
1
OF
13
SHEET



- LEGEND:**
- [Symbol] INDICATES CONCRETE PAVEMENT
 - [Symbol] INDICATES CONCRETE
 - [Symbol] INDICATES AC PAVEMENT
 - [Symbol] INDICATES 2:1 SLOPE
 - [Symbol] INDICATES FIRE HYDRANT
 - [Symbol] INDICATES LIGHT POLE
 - [Symbol] INDICATES 6" WALL (6" SPLIT FACE & TUBULAR STEEL) PER DETAIL AT LEFT
 - [Symbol] INDICATES 6" SECURITY FENCE
 - [Symbol] INDICATES CONCRETE CURB ONLY
 - [Symbol] INDICATES EDGE OF AC PAVEMENT
 - [Symbol] TRASH ENCLOSURE
 - [Symbol] ELECTRIC TRANSFORMER
 - [Symbol] LOADING
 - [Symbol] PARKING AREA FOR VEHICLE LOADING
 - [Symbol] HANDICAP PARKING
 - [Symbol] 6" W 6" WATER MAIN
 - [Symbol] PARALLEL PARKING SPACE
 - [Symbol] HVAC HEATING, VENTILATION AND AIR CONDITIONING UNITS
 - [Symbol] 2" W 2" WATER SERVICE
 - [Symbol] 4" W 4" WATER SERVICE
 - [Symbol] SECURITY CAMERAS
 - [Symbol] PIV POST INDICATOR VALVE
 - [Symbol] FDC FIRE DEPARTMENT CONNECTION

PARKING:

	REQUIRED	PROVIDED
STANDARD SPACES	70	61
PARALLEL SPACES	5	11
HANDICAP SPACES	5	5
TOTAL	80 SPACES	77 SPACES

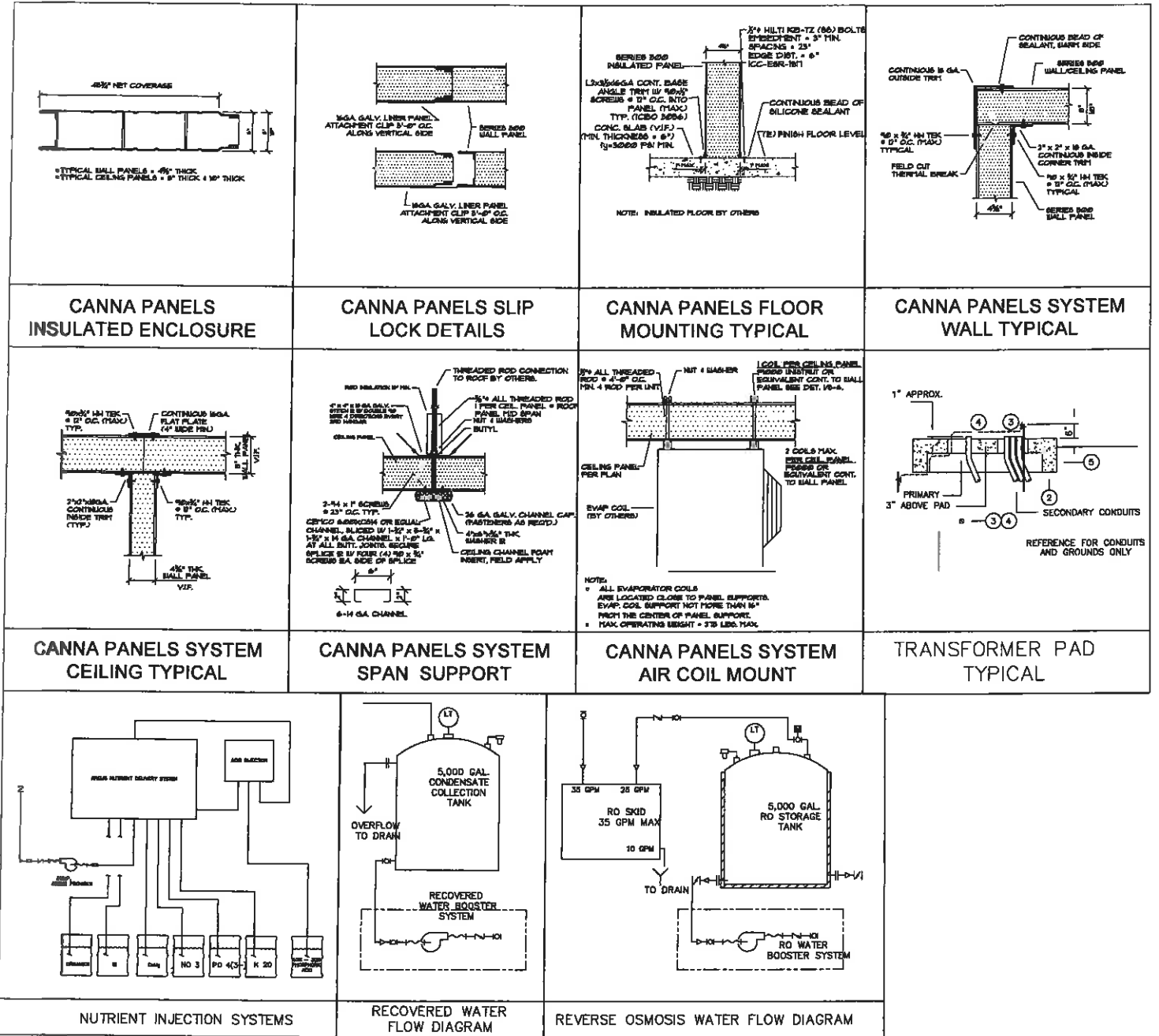


W.J. McKEEVER, INC.
 CIVIL ENGINEERING
 904 E. WASHINGTON STREET, SUITE 208
 COLTON, CALIFORNIA 92324
 TEL: (909) 825-8046
 FAX: (909) 825-8039

DEER PARK DEVELOPMENT CORP.
 1770 N. ARROWHEAD AVE.
 SAN BERNARDINO, CA 92405
 909-886-4793

**SITE PLAN
 PLAN VIEW
 MEDICAL MARIJUANA FACILITY**
 320 BALBOA PL
 NEEDLES, CA
 92363
 11-30-17

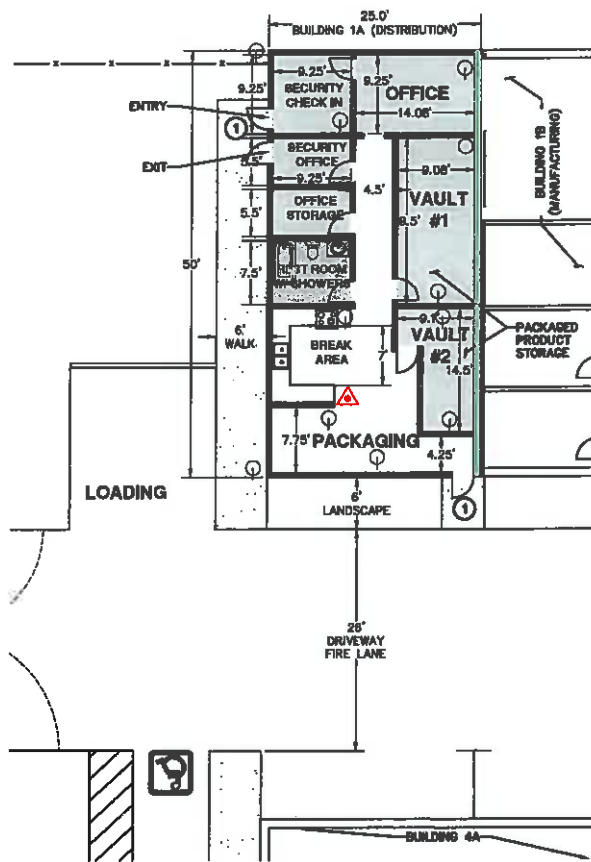
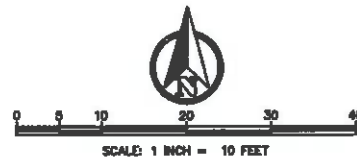
**SHEET
 2
 OF
 13
 SHEET**



NOTES

OWNER/APPLICANT:
DEER PARK DEVELOPMENT CORP.
1770 N. ARROWHEAD AVENUE
SAN BERNARDINO, CA 92405
(909) 886-4793

- THE FOLLOWING FLOOR PLANS SHOW THE PROPOSED TENANT IMPROVEMENTS FOR EIGHT CONCURRENTLY FILED CUP'S. FOLLOWING IS A SUMMARY OF THE EIGHT CUP'S:
- CUP 1: BUILDING 1A: 1,250 SF: DISTRIBUTION OF MEDICAL MARIJUANA
- CUP 2: BUILDING 1B/1C: 4,500 SF: MANUFACTURE OF MED. MARIJUANA PRODUCTS
- CUP 3: BUILDING 1D: 9,250 SF: CULTIVATION OF MEDICAL MARIJUANA
- CUP 4: BUILDING 2A: 15,000 SF: CULTIVATION OF MEDICAL MARIJUANA
- CUP 5: BUILDING 3A: 18,000 SF: CULTIVATION OF MEDICAL MARIJUANA
- CUP 6: BUILDING 3B: 16,500 SF: CULTIVATION OF MEDICAL MARIJUANA
- CUP 7: BUILDING 4A: 15,000 SF: CULTIVATION OF MEDICAL MARIJUANA
- CUP 8: BUILDING 4B: 15,000 SF: CULTIVATION OF MEDICAL MARIJUANA
- THE EXISTING AND PROPOSED GENERAL PLAN DESIGNATION IS HIGHWAY COMMERCIAL (CH). THE EXISTING AND PROPOSED ZONING IS (C-3).
- THE TENANT IMPROVEMENTS SHOWN WILL TAKE PLACE WITHIN THE EXISTING PRE-FAB METAL BUILDINGS.
- PROPERTY ADDRESS IS: 320 BALBOA PLACE, NEEDLES, CA 92363
- DETAILS AT LEFT PERTAIN TO ALL OF THE FOLLOWING FLOOR PLANS.



SEE BUILDING DETAILS SHEET 3

DATA TABLE - BUILDING 1A

TOTAL SQUARE FOOTAGE (GROSS)	1,280 SF
GENERAL PLAN / ZONING	HIGHWAY COMMERCIAL (C-3)
CONSTRUCTION TYPE	PRE-FABRICATED METAL (TYPE #1)
CONDITIONAL USE TYPE	DISTRIBUTION
BUILDING HEIGHT	14'
NUMBER OF STORES	1
NUMBER OF STAFF (MAX)	8

NOTE:

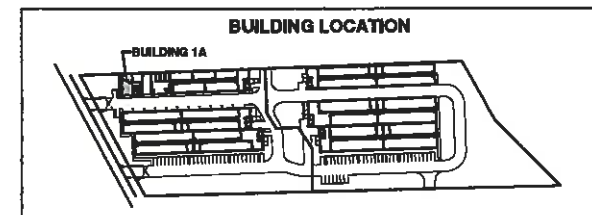
AIR FILTRATION AND ODOR NEUTRALIZATION: THE SYSTEM WILL USE A TWO-PHASE FILTRATION AND ODOR NEUTRALIZATION SYSTEM CONSISTING OF CARBON FILTERS FOLLOWED BY 100% ORGANIC OZONE INFUSED AIR SYSTEM OF ELIMINATING CANNABIS ODORS.

RELEVANT CODES

2018 CALIFORNIA BUILDING CODE
 2018 CALIFORNIA MECHANICAL CODE
 2018 CALIFORNIA PLUMBING CODE
 2018 CALIFORNIA ELECTRICAL CODE
 2018 CALIFORNIA ENERGY CODE
 2018 CALIFORNIA GREEN CODE

LEGEND:

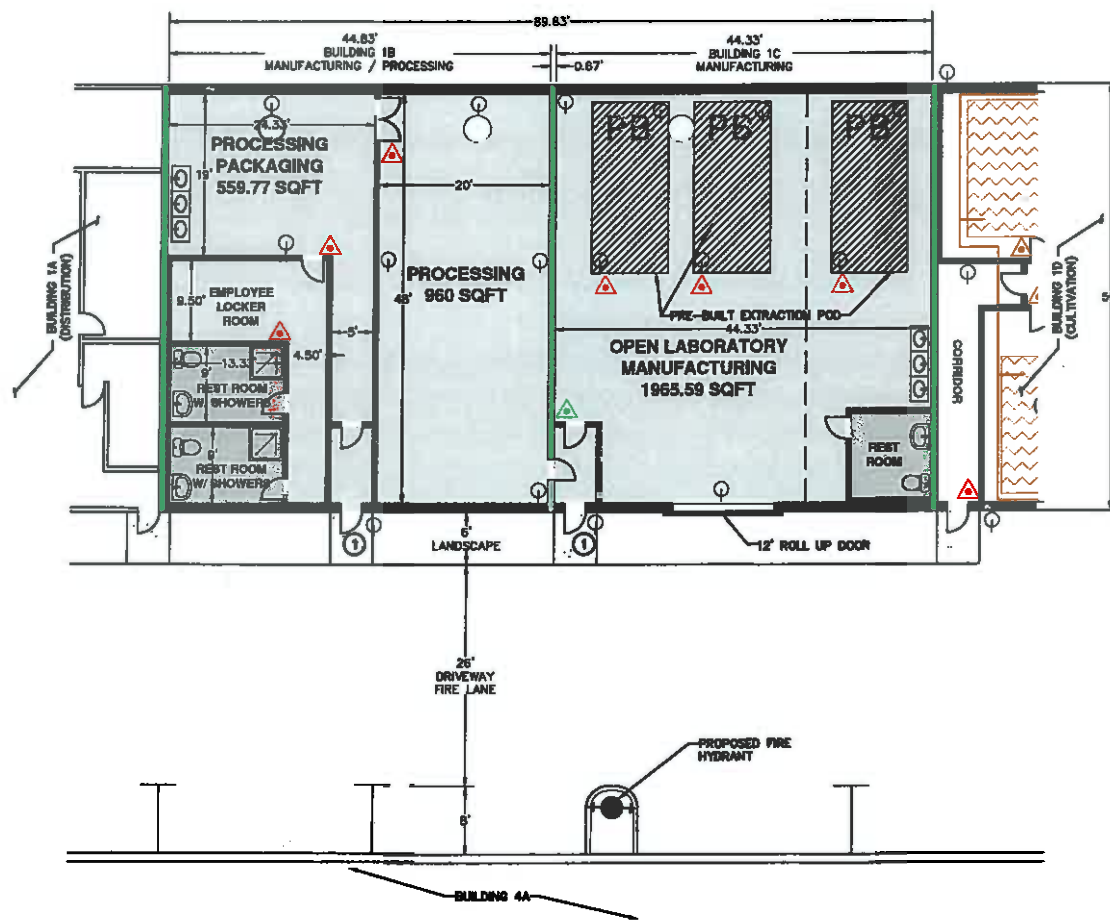
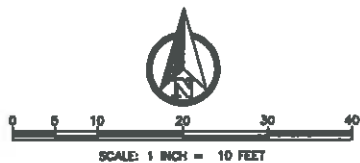
- EMPLOYEE ENTRANCE / EXIST
- SECURITY CAMERAS
- RECYCLED WATER RECOVERY LINES
- RECOVERED WATER FILTRATION SYSTEM
- FRESH WATER FILTRATION SYSTEM
- RECLAIMED WATER RECOVERY PUMP
- FRESH WATER DISTRIBUTION LINES
- RECOVERED WATER FILTRATION SYSTEM
- NEW INTERIOR WALL CONSTRUCTION (SEE DETAIL)
- FIRE EXTINGUISHER
- ROOF EXHAUST WITH "TOP HAT" DIFFUSER
- 1 HOUR FIRE WALL
- CANOPY AREA



DEER PARK DEVELOPMENT CORP.
 1770 N. ARROWHEAD AVE.
 SAN BERNARDINO, CA 92405
 909-886-4793

FLOOR PLAN
BUILDING 1A - DISTRIBUTION
MEDICAL MARIJUANA FACILITY
 320 BALBOA PL
 NEEDLES, CA
 92363
 11-30-17

SHEET
 4
 OF
 13
 SHEET



SEE BUILDING DETAILS SHEET 3

DATA TABLE - BUILDING 1B/1C

TOTAL SQUARE FOOTAGE (GROSS)	4,491.50 SF
GENERAL PLAN / ZONING	HIGHWAY COMMERCIAL (C-3)
CONSTRUCTION TYPE	PRE-FABRICATED METAL (TYPE III)
CONDITIONAL USE TYPE	MANUFACTURING
BUILDING HEIGHT	14'
NUMBER OF STORES	1
NUMBER OF STAFF (MAX)	5

NOTE:

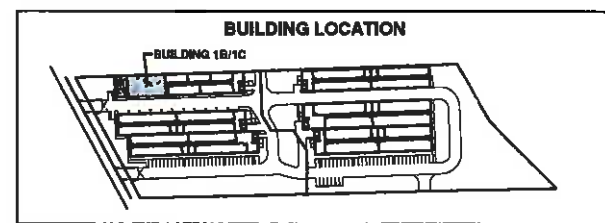
THE PRE-BUILT / PRE-MANUFACTURED EXTRACTION PODS ARE DESIGNED TO BE COMPLIANT WITH ALL STATE AND COUNTY FIRE DEPARTMENTS REQUIREMENTS AS WELL AS OSHA, NFPA, IFC, MED, MED, AND IAC REQUIREMENTS FOR LIQUEFIED PETROLEUM GASES AND ORGANIC SOLVENTS. IT IS THE INTENT OF THE APPLICANT TO USE ONLY ORGANIC SOLVENTS. THE EXHAUST HOOD WILL PROVIDE CLASS 1 DIVISION 1 SPACE. THE EQUIPMENT WILL BE PRE-CERTIFIED AND 100% ETL-LISTED. THE LABORATORY WILL FIT THREE STANDARD EXTRACTION UNITS AND TECHNICIANS.

RELEVANT CODES

2016 CALIFORNIA BUILDING CODE
2016 CALIFORNIA MECHANICAL CODE
2016 CALIFORNIA PLUMBING CODE
2016 CALIFORNIA ELECTRICAL CODE
2016 CALIFORNIA ENERGY CODE
2016 CALIFORNIA GREEN CODE

LEGEND:

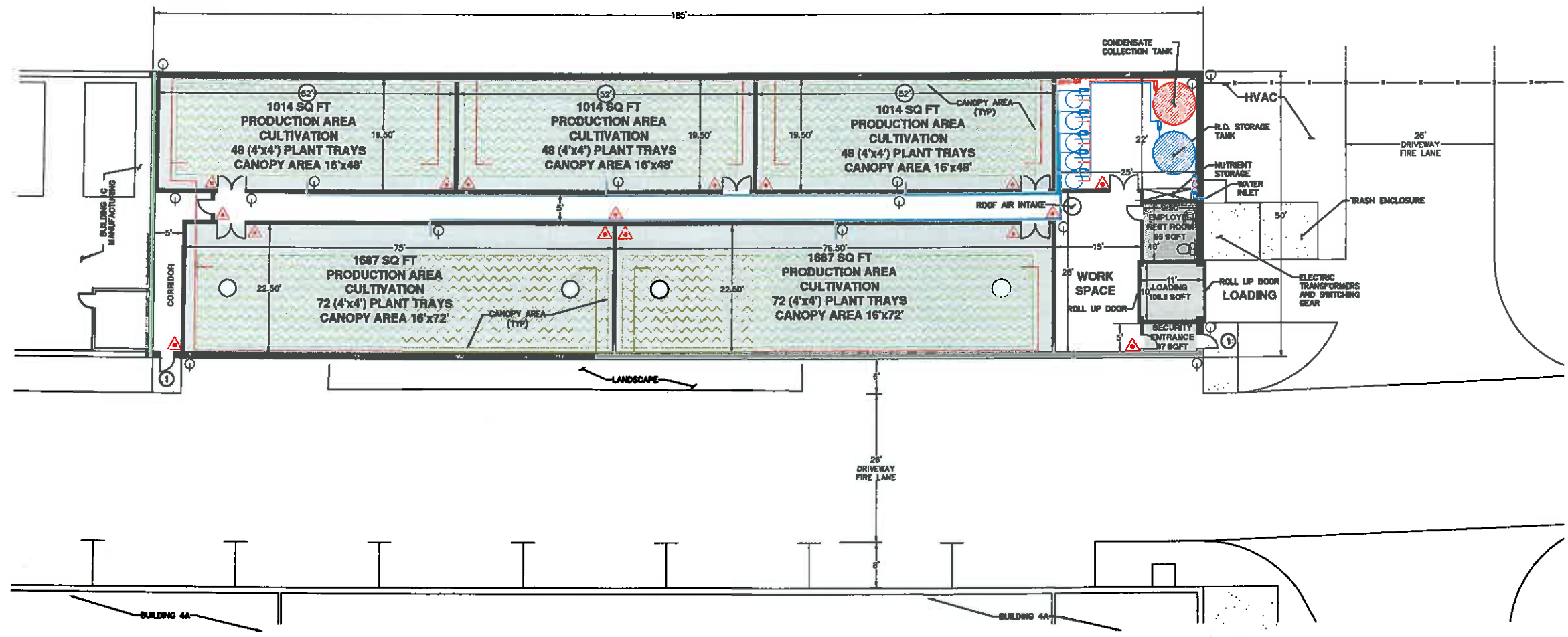
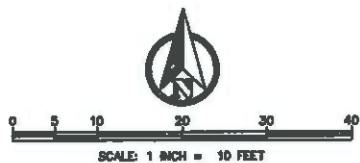
- ① EMPLOYEE ENTRANCE / EXIST
- ⊙ SECURITY CAMERAS
- RECYCLED WATER RECOVERY LINES
- RECOVERED WATER FILTRATION SYSTEM
- FRESH WATER FILTRATION SYSTEM
- ↓ RECLAIMED WATER RECOVERY PUMP
- FRESH WATER DISTRIBUTION LINES
- RECOVERED WATER FILTRATION LINES
- NEW INTERIOR WALL CONSTRUCTION (SEE DETAIL)
- ▲ FIRE EXTINGUISHER
- ROOF EXHAUST WITH "TOP MAT" DIFFUSER
- 1 HOUR FIRE WALL
- ~ CANOPY AREA



DEER PARK DEVELOPMENT CORP.
1770 N. ARROWHEAD AVE.
SAN BERNARDINO, CA 92405
909-886-4793

FLOOR PLAN
BUILDING 1B/1C - MANUFACTURING
MEDICAL MARIJUANA FACILITY
320 BALBOA PL
NEEDLES, CA
92363
11-30-17

SHEET
5
OF
13
SHEET



SEE BUILDING DETAILS SHEET 3

DATA TABLE - BUILDING 1D

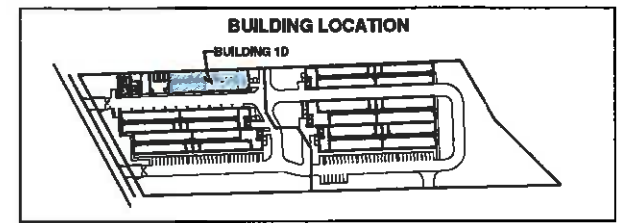
TOTAL SQUARE FOOTAGE (GROSS)	9,290 SF
GENERAL PLAN / ZONING	HIGHWAY COMMERCIAL (C-3)
CONSTRUCTION TYPE	PRE-FABRICATED METAL (TYPE II)
CONDITIONAL USE TYPE	CULTIVATION
BUILDING HEIGHT	14'
NUMBER OF STORES	1
NUMBER OF STAFF (MAX)	10
PRODUCTION / CULTIVATION AREA (NET)	6,416 SF
PLANT CANOPY AREA	4,808 SF
NUMBER OF 4'x4' PLANT TRAYS	288

NOTE:
 AIR FILTRATION AND ODOR NEUTRALIZATION: THE SYSTEM WILL USE A TWO-PHASE FILTRATION AND ODOR NEUTRALIZATION SYSTEM CONSISTING OF CARBON FILTERS FOLLOWED BY 100% ORGANIC OZONE INFUSED AIR SYSTEM OF ELIMINATING CANNABIS ODORS.

RELEVANT CODES

2018 CALIFORNIA BUILDING CODE
2018 CALIFORNIA MECHANICAL CODE
2018 CALIFORNIA PLUMBING CODE
2018 CALIFORNIA ELECTRICAL CODE
2018 CALIFORNIA ENERGY CODE
2018 CALIFORNIA GREEN CODE

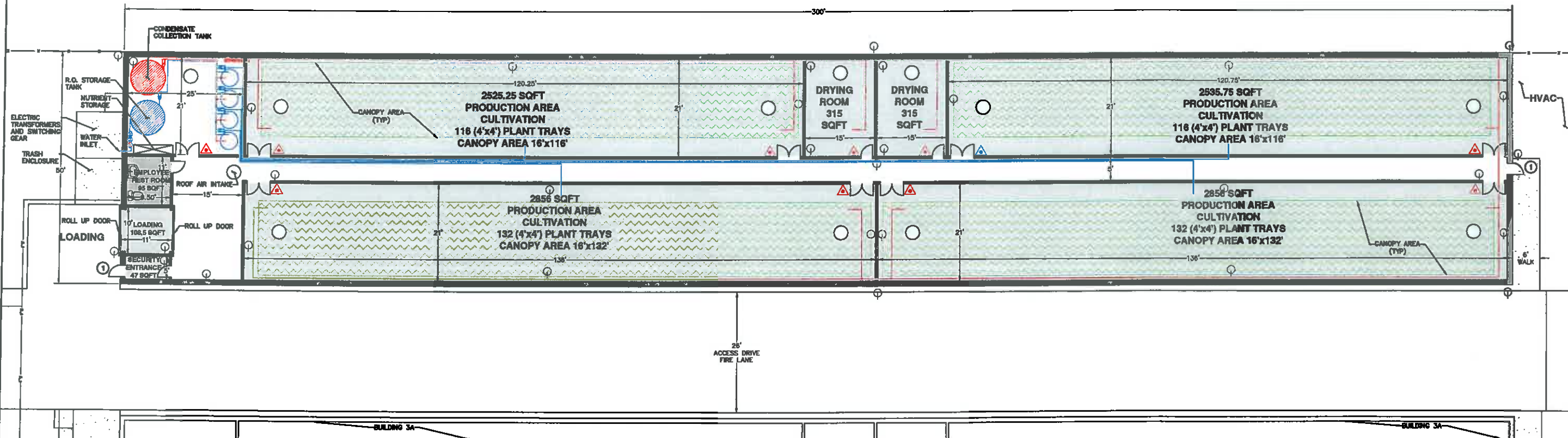
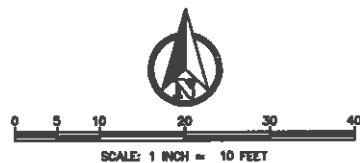
- LEGEND:**
- ① EMPLOYEE ENTRANCE / EXIST
 - ⊙ SECURITY CAMERAS
 - RECYCLED WATER RECOVERY LINES
 - RECOVERED WATER FILTRATION SYSTEM
 - FRESH WATER FILTRATION SYSTEM
 - RECLAIMED WATER RECOVERY PUMP
 - FRESH WATER DISTRIBUTION LINES
 - RECOVERED WATER FILTRATION SYSTEM
 - NEW INTERIOR WALL CONSTRUCTION (SEE DETAIL)
 - △ FIRE EXTINGUISHER
 - ⊙ ROOF EXHAUST WITH "TOP HAT" DIFFUSER
 - 1 HOUR FIRE WALL
 - CANOPY AREA



DEER PARK DEVELOPMENT CORP.
 1770 N. ARROWHEAD AVE.
 SAN BERNARDINO, CA 92405
 909-886-4793

FLOOR PLAN
BUILDING 1D - CULTIVATION
MEDICAL MARIJUANA FACILITY
 320 BALBOA PL
 NEEDLES, CA
 92363
 11-30-17

SHEET
6
OF
13
SHEET



SEE BUILDING DETAILS SHEET 3

DATA TABLE - BUILDING 2A

TOTAL SQUARE FOOTAGE (GROSS)	16,000 SF
GENERAL PLAN / ZONING	HIGHWAY COMMERCIAL (C-3)
CONSTRUCTION TYPE	PRE-FABRICATED METAL (TYPE III)
CONDITIONAL USE TYPE	CULTIVATION
BUILDING HEIGHT	14'
NUMBER OF STORES	1
NUMBER OF STAFF (MAX)	10
PRODUCTION / CULTIVATION AREA (NET)	10,773 SF
PLANT CANOPY AREA	7,936 SF
NUMBER OF 4'x4' PLANT TRAYS	486

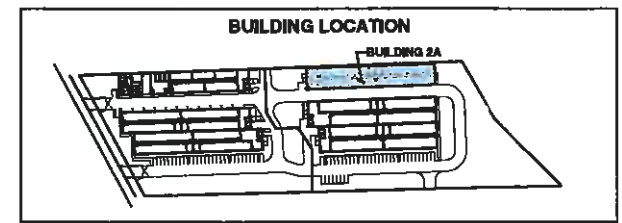
NOTE:
 AIR FILTRATION AND ODOR NEUTRALIZATION: THE SYSTEM WILL USE A TWO-PHASE FILTRATION AND ODOR NEUTRALIZATION SYSTEM CONSISTING OF CARBON FILTERS FOLLOWED BY 100% ORGANIC OZONE INFUSED AIR SYSTEM OF ELIMINATING CANNABIS ODORS.

RELEVANT CODES

2018 CALIFORNIA BUILDING CODE
2018 CALIFORNIA MECHANICAL CODE
2018 CALIFORNIA PLUMBING CODE
2018 CALIFORNIA ELECTRICAL CODE
2018 CALIFORNIA ENERGY CODE
2018 CALIFORNIA GREEN CODE

LEGEND:

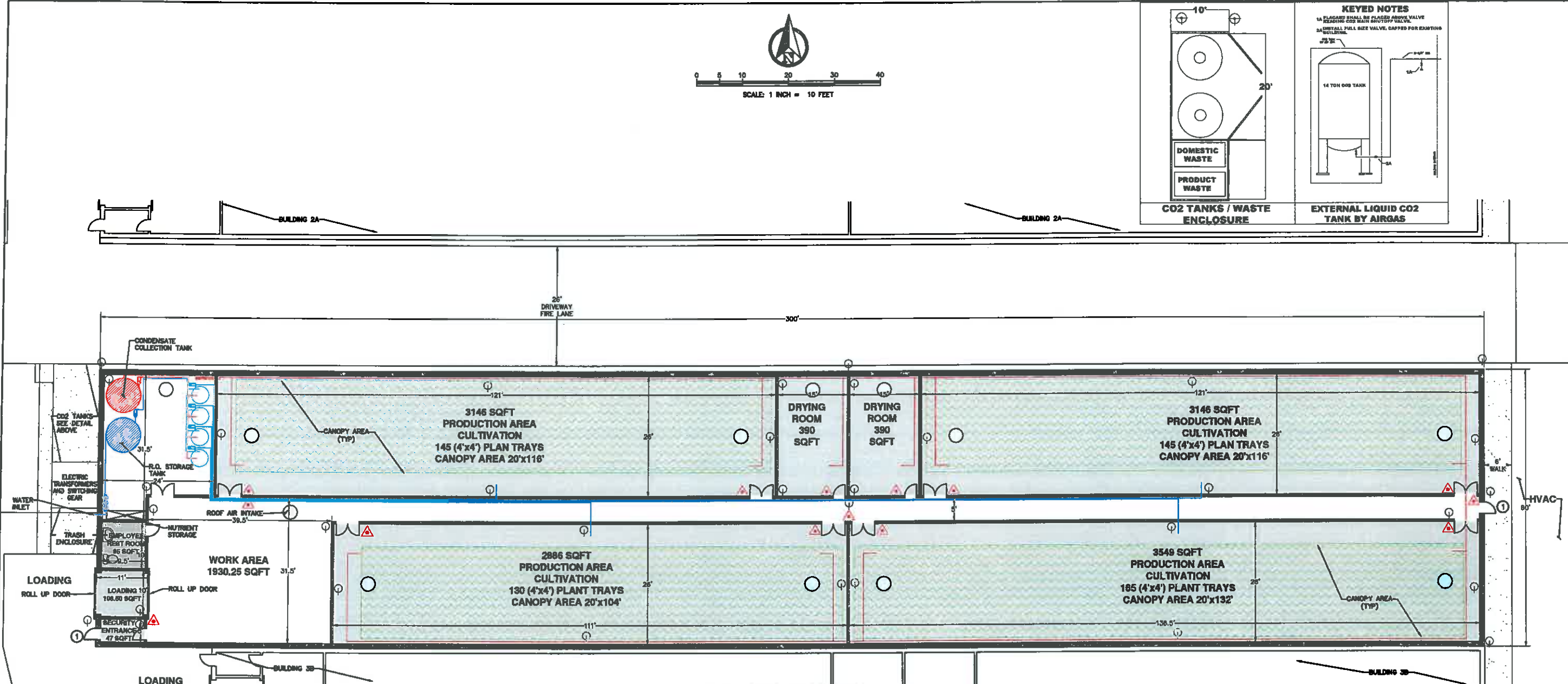
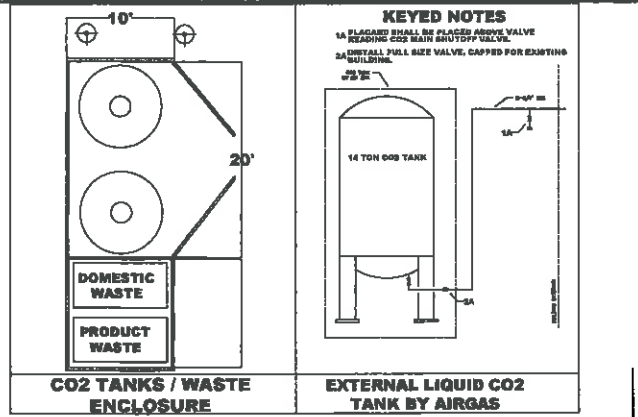
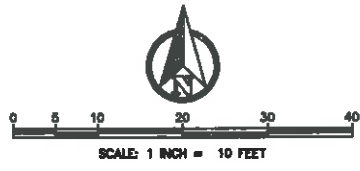
- ① EMPLOYEE ENTRANCE / EXIST
- ⊙ SECURITY CAMERAS
- RECYCLED WATER RECOVERY LINES
- ⊕ RECOVERED WATER FILTRATION SYSTEM
- ⊕ FRESH WATER FILTRATION SYSTEM
- ⊕ RECLAIMED WATER RECOVERY PUMP
- FRESH WATER DISTRIBUTION LINES
- RECOVERED WATER FILTRATION SYSTEM
- NEW INTERIOR WALL CONSTRUCTION (SEE DETAIL)
- △ FIRE EXTINGUISHER
- ⊙ ROOF EXHAUST WITH "TOP HAT" DIFFUSER
- 1 HOUR FIRE WALL
- CANOPY AREA



DEER PARK DEVELOPMENT CORP.
 1770 N. ARROWHEAD AVE.
 SAN BERNARDINO, CA 92405
 909-886-4793

FLOOR PLAN
BUILDING 2A - CULTIVATION
MEDICAL MARIJUANA FACILITY
 320 BALBOA PL
 NEEDLES, CA
 92363
 11-30-17

SHEET
7
OF
13
SHEET



DATA TABLE - BUILDING 3A

TOTAL SQUARE FOOTAGE (GROSS)	18,000 SF
GENERAL PLAN / ZONING	HIGHWAY COMMERCIAL (C-3)
CONSTRUCTION TYPE	PRE-FABRICATED METAL (TYPE II)
CONDITIONAL USE TYPE	CULTIVATION
BUILDING HEIGHT	14'
NUMBER OF STORIES	1
NUMBER OF STAFF (MAX)	10
PRODUCTION / CULTIVATION AREA (NET)	12,727 SF
PLANT CANOPY AREA	8,380 SF
NUMBER OF 4'x4' PLANT TRAYS	885

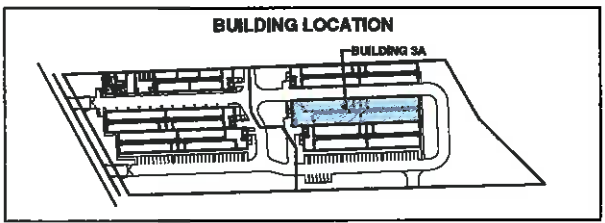
NOTE:
AIR FILTRATION AND ODOR NEUTRALIZATION: THE SYSTEM WILL USE A TWO-PHASE FILTRATION AND ODOR NEUTRALIZATION SYSTEM CONSISTING OF CARBON FILTERS FOLLOWED BY 100% ORGANIC OZONE INFUSED AIR SYSTEM OF ELIMINATING CANNABIS ODORS.

RELEVANT CODES

2016 CALIFORNIA BUILDING CODE
2016 CALIFORNIA MECHANICAL CODE
2016 CALIFORNIA PLUMBING CODE
2016 CALIFORNIA ELECTRICAL CODE
2016 CALIFORNIA ENERGY CODE
2016 CALIFORNIA GREEN CODE

- LEGEND:**
- ① EMPLOYEE ENTRANCE / EXIST
 - ⊙ SECURITY CAMERAS
 - RECYCLED WATER RECOVERY LINES
 - RECOVERED WATER FILTRATION SYSTEM
 - FRESH WATER FILTRATION SYSTEM
 - RECLAIMED WATER RECOVERY PUMP
 - FRESH WATER DISTRIBUTION LINES
 - RECOVERED WATER FILTRATION SYSTEM
 - NEW INTERIOR WALL CONSTRUCTION (SEE DETAIL)
 - △ FIRE EXTINGUISHER
 - ⊙ ROOF EXHAUST WITH "TOP HAT" DIFFUSER
 - 1 HOUR FIRE WALL
 - CANOPY AREA

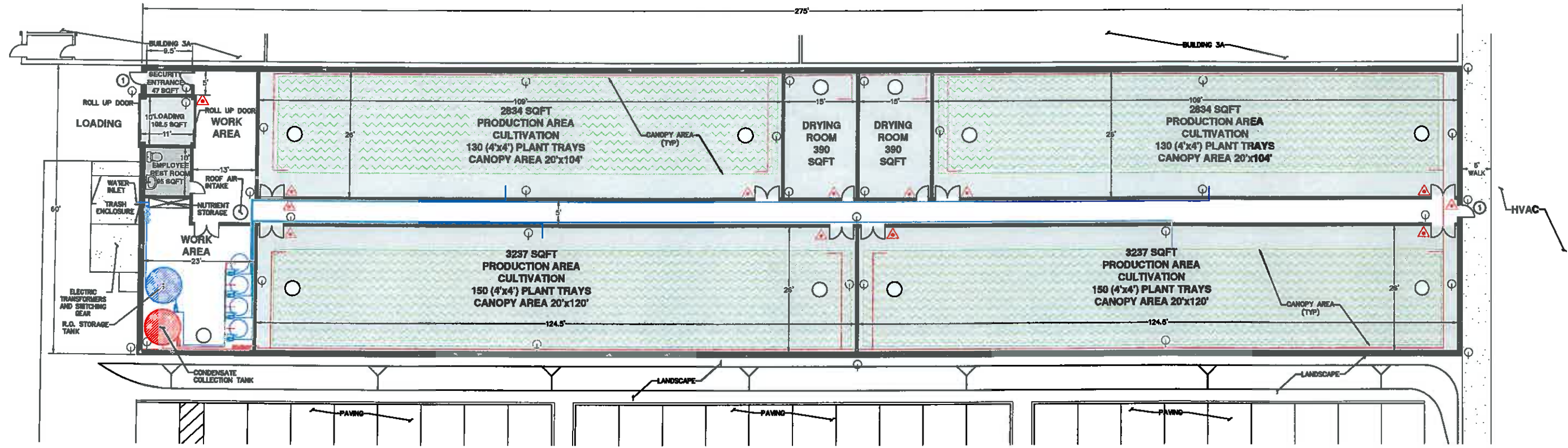
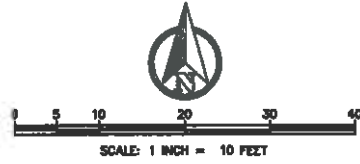
SEE BUILDING DETAILS SHEET 3



DEER PARK DEVELOPMENT CORP.
1770 N. ARROWHEAD AVE.
SAN BERNARDINO, CA 92405
909-886-4793

FLOOR PLAN
BUILDING 3A - CULTIVATION
MEDICAL MARIJUANA FACILITY
320 BALBOA PL
NEEDLES, CA
92363
11-30-17

SHEET
8
OF
13
SHEET



SEE BUILDING DETAILS SHEET 3

DATA TABLE - BUILDING 3B

TOTAL SQUARE FOOTAGE (GROSS)	16,900 SF
GENERAL PLAN / ZONING	HIGHWAY COMMERCIAL (C-3)
CONSTRUCTION TYPE	PRE-FABRICATED METAL (TYPE II)
CONDITIONAL USE TYPE	CULTIVATION
BUILDING HEIGHT	14'
NUMBER OF STORIES	1
NUMBER OF STAFF (MAX)	10
PRODUCTION / CULTIVATION AREA (NET)	12,142 SF
PLANT CANOPY AREA	8,960 SF
NUMBER OF 4'x4' PLANT TRAYS	860

NOTE:

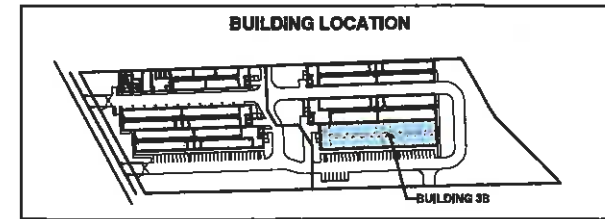
AIR FILTRATION AND ODOR NEUTRALIZATION: THE SYSTEM WILL USE A TWO-PHASE FILTRATION AND ODOR NEUTRALIZATION SYSTEM CONSISTING OF CARBON FILTERS FOLLOWED BY 100% ORGANIC OZONE INFUSED AIR SYSTEM OF ELIMINATING CANDIDIS ODORS.

RELEVANT CODES

- 2018 CALIFORNIA BUILDING CODE
- 2018 CALIFORNIA MECHANICAL CODE
- 2018 CALIFORNIA PLUMBING CODE
- 2018 CALIFORNIA ELECTRICAL CODE
- 2018 CALIFORNIA ENERGY CODE
- 2018 CALIFORNIA GREEN CODE

LEGEND:

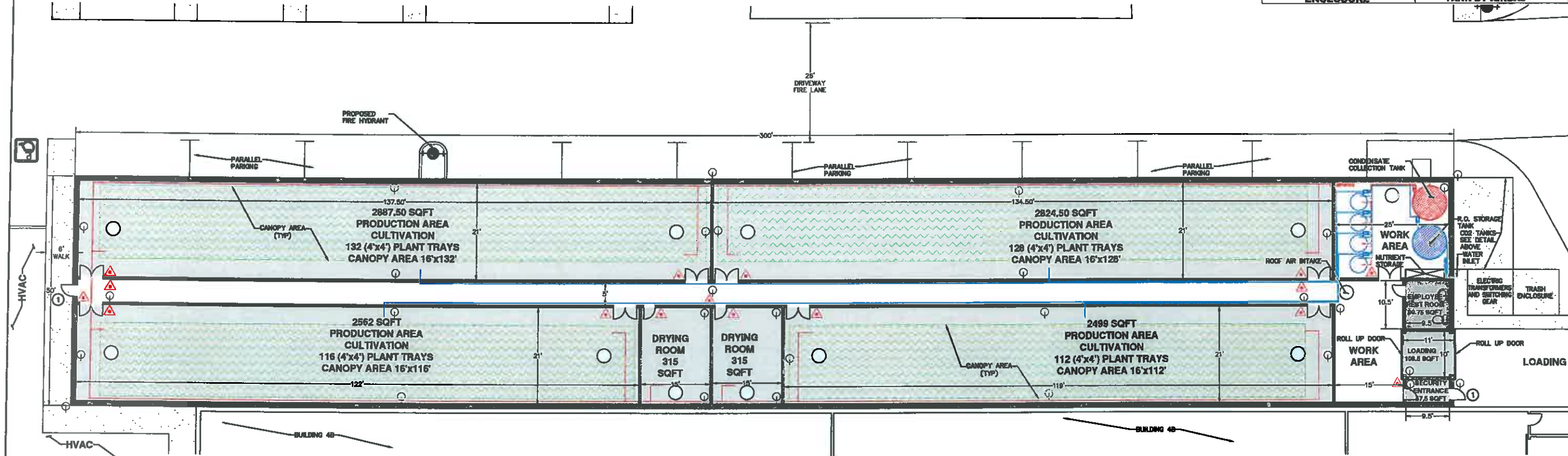
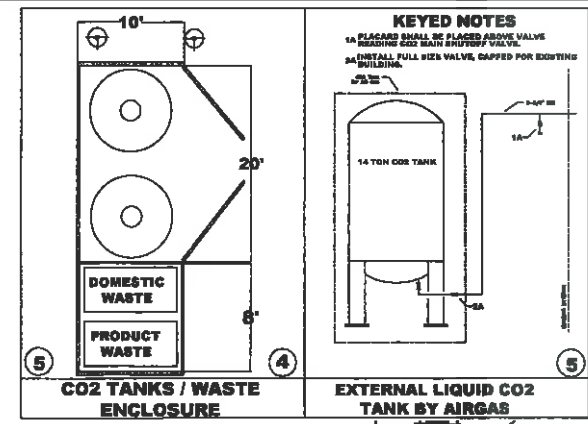
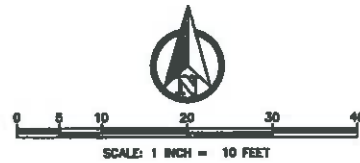
- ① EMPLOYEE ENTRANCE / EXIST
- 📷 SECURITY CAMERAS
- RECYCLED WATER RECOVERY LINES
- 🔴 RECOVERED WATER FILTRATION SYSTEM
- 🔵 FRESH WATER FILTRATION SYSTEM
- 📉 RECLAIMED WATER RECOVERY PUMP
- FRESH WATER DISTRIBUTION LINES
- 🔵 RECOVERED WATER FILTRATION SYSTEM
- NEW INTERIOR WALL CONSTRUCTION (SEE DETAIL)
- 🔥 FIRE EXTINGUISHER
- ⊙ ROOF EXHAUST WITH "TOP HAT" DIFFUSER
- 1 HOUR FIRE WALL
- 🌿 CANOPY AREA



DEER PARK DEVELOPMENT CORP.
1770 N. ARROWHEAD AVE.
SAN BERNARDINO, CA 92405
909-886-4793

FLOOR PLAN
BUILDING 3B - CULTIVATION
MEDICAL MARIJUANA FACILITY
320 BALBOA PL
NEEDLES, CA
92363
11-30-17

SHEET
9
OF
13
SHEET



SEE BUILDING DETAILS SHEET 3

DATA TABLE - BUILDING 4A

TOTAL SQUARE FOOTAGE (GROSS)	18,000 SF
GENERAL PLAN / ZONING	HIGHWAY COMMERCIAL (C-3)
CONSTRUCTION TYPE	PRE-FABRICATED METAL (TYPE III)
CONDITIONAL USE TYPE	CULTIVATION
BUILDING HEIGHT	14'
NUMBER OF STORIES	1
NUMBER OF STAFF (MAX)	10
PRODUCTION / CULTIVATION AREA (NET)	10,773 SF
PLANT CANOPY AREA	7,608 SF
NUMBER OF 4'x4' PLANT TRAYS	488

NOTE:

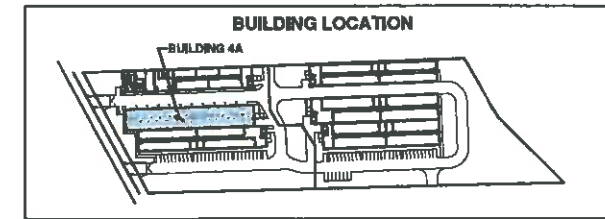
AIR FILTRATION AND ODOR NEUTRALIZATION: THE SYSTEM WILL USE A TWO-PHASE FILTRATION AND ODOR NEUTRALIZATION SYSTEM CONSISTING OF CARBON FILTERS FOLLOWED BY 100% ORGANIC OZONE INFUSED AIR SYSTEM OF ELIMINATING CANDIDAS ODORS.

RELEVANT CODES

- 2018 CALIFORNIA BUILDING CODE
- 2018 CALIFORNIA MECHANICAL CODE
- 2018 CALIFORNIA PLUMBING CODE
- 2018 CALIFORNIA ELECTRICAL CODE
- 2018 CALIFORNIA ENERGY CODE
- 2018 CALIFORNIA GREEN CODE

LEGEND:

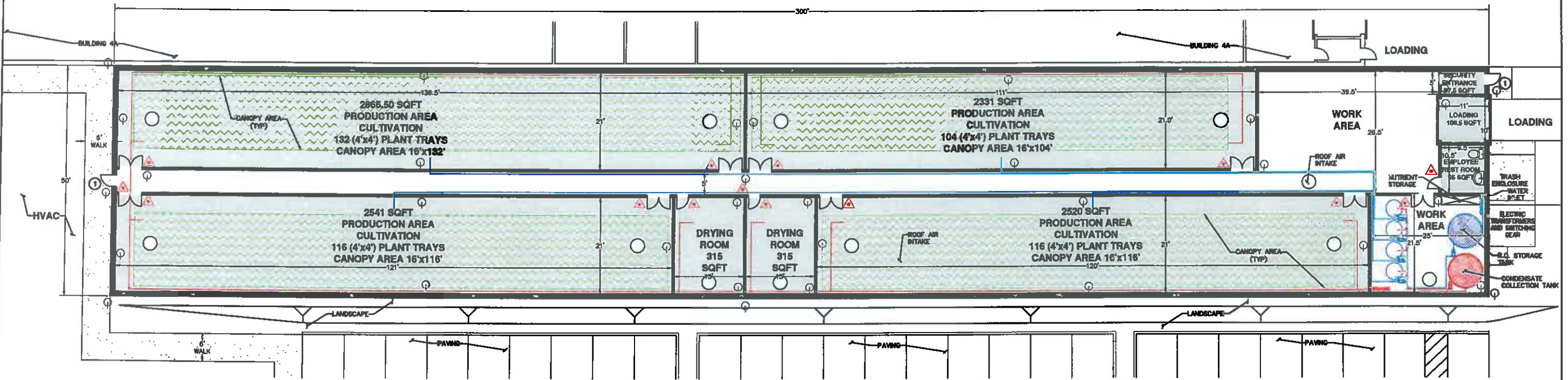
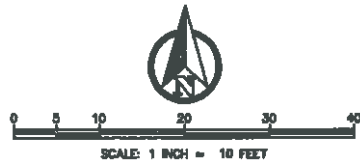
- ① EMPLOYEE ENTRANCE / DGST
- Ⓚ SECURITY CAMERAS
- RECYCLED WATER RECOVERY LINES
- RECOVERED WATER FILTRATION SYSTEM
- FRESH WATER FILTRATION SYSTEM
- RECLAIMED WATER RECOVERY PUMP
- FRESH WATER DISTRIBUTION LINES
- RECOVERED WATER FILTRATION SYSTEM
- NEW INTERIOR WALL CONSTRUCTION (SEE DETAIL)
- △ FIRE EXTINGUISHER
- ⊙ ROOF EXHAUST WITH "TOP HAT" DIFFUSER
- 1 HOUR FIRE WALL
- CANOPY AREA



DEER PARK DEVELOPMENT CORP.
1770 N. ARROWHEAD AVE.
SAN BERNARDINO, CA 92405
909-886-4793

FLOOR PLAN
BUILDING 4A - CULTIVATION
MEDICAL MARIJUANA FACILITY
320 BALBOA PL
NEEDLES, CA
92363
11-30-17

SHEET
10
OF
13
SHEET



SEE BUILDING DETAILS SHEET 3

DATA TABLE - BUILDING 4B

TOTAL SQUARE FOOTAGE (GROSS)	15,000 SF
GENERAL PLAN / ZONING	HIGHWAY COMMERCIAL (C-3)
CONSTRUCTION TYPE	PRE-FABRICATED METAL (TYPE III)
CONDITIONAL USE TYPE	CULTIVATION
BUILDING HEIGHT	14'
NUMBER OF STORES	1
NUMBER OF STAFF (MAX)	10
PRODUCTION / CULTIVATION AREA (NET)	10,288.00 SF
PLANT CANOPY AREA	7,488 SF
NUMBER OF 4'x4' PLANT TRAYS	488

NOTE:

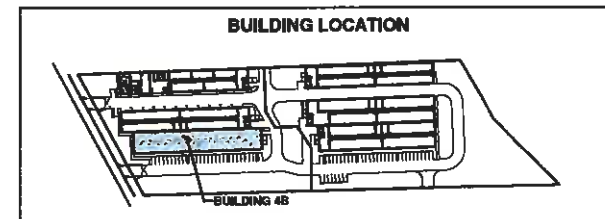
AIR FILTRATION AND ODOR NEUTRALIZATION: THE SYSTEM WILL USE A TWO-PHASE FILTRATION AND ODOR NEUTRALIZATION SYSTEM CONSISTING OF CARBON FILTERS FOLLOWED BY 100% ORGANIC OZONE INFUSED AIR SYSTEM OF ELIMINATING CANNABIS ODORS.

RELEVANT CODES

- 2018 CALIFORNIA BUILDING CODE
- 2018 CALIFORNIA MECHANICAL CODE
- 2018 CALIFORNIA PLUMBING CODE
- 2018 CALIFORNIA ELECTRICAL CODE
- 2018 CALIFORNIA ENERGY CODE
- 2018 CALIFORNIA GREEN CODE

LEGEND:

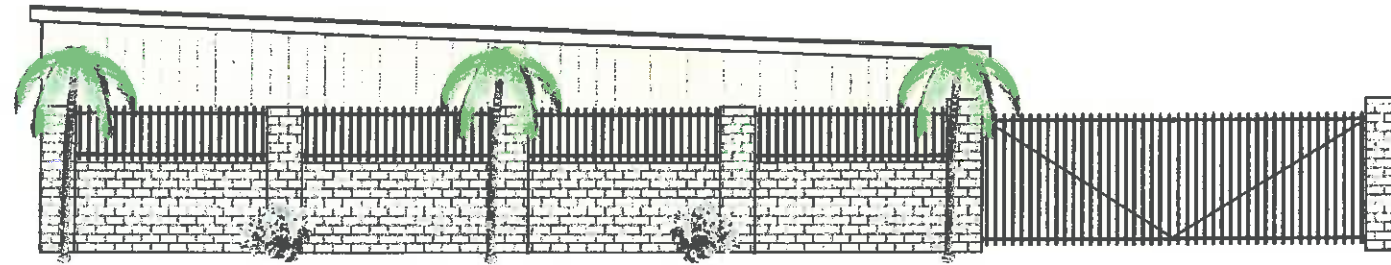
- ① EMPLOYEE ENTRANCE / EXIST
- 📷 SECURITY CAMERAS
- 🔄 RECYCLED WATER RECOVERY LINES
- 🔍 RECOVERED WATER FILTRATION SYSTEM
- 💧 FRESH WATER FILTRATION SYSTEM
- 🚰 RECLAIMED WATER RECOVERY PUMP
- 📡 FRESH WATER DISTRIBUTION LINES
- 🔍 RECOVERED WATER FILTRATION SYSTEM
- 🚧 NEW INTERIOR WALL CONSTRUCTION (SEE DETAIL)
- 🔥 FIRE EXTINGUISHER
- 🌀 ROOF EXHAUST WITH "TOP HAT" DIFFUSER
- 🚒 1 HOUR FIRE WALL
- 🌿 CANOPY AREA



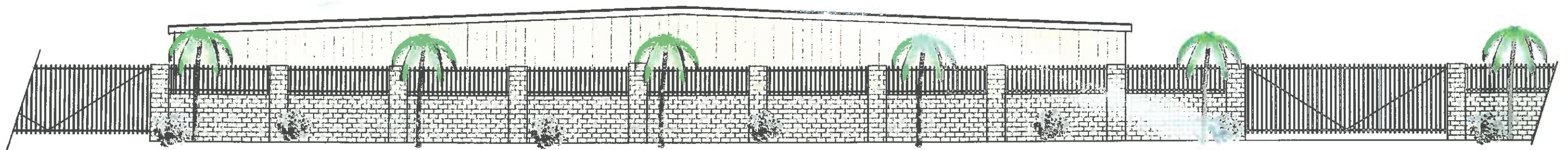
DEER PARK DEVELOPMENT CORP.
1770 N. ARROWHEAD AVE.
SAN BERNARDINO, CA 92405
909-886-4793

FLOOR PLAN
BUILDING 4B - CULTIVATION
MEDICAL MARIJUANA FACILITY
320 BALBOA PL
NEEDLES, CA
92363
11-30-17

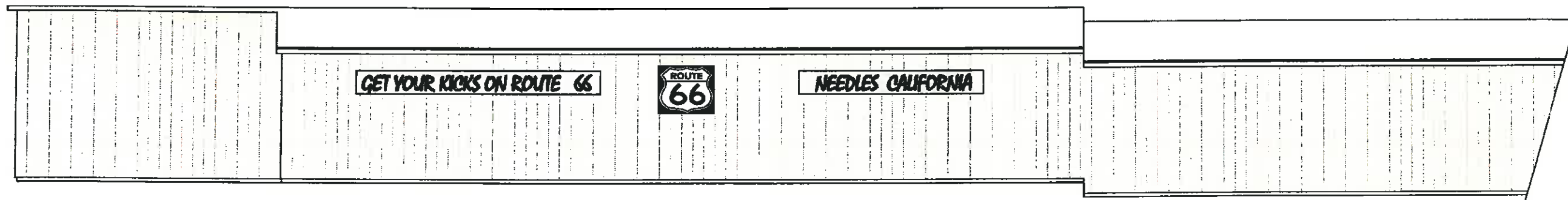
SHEET
11
OF
13
SHEET



BUILDING 1 FRONT VIEW



BUILDING 4 FRONT VIEW

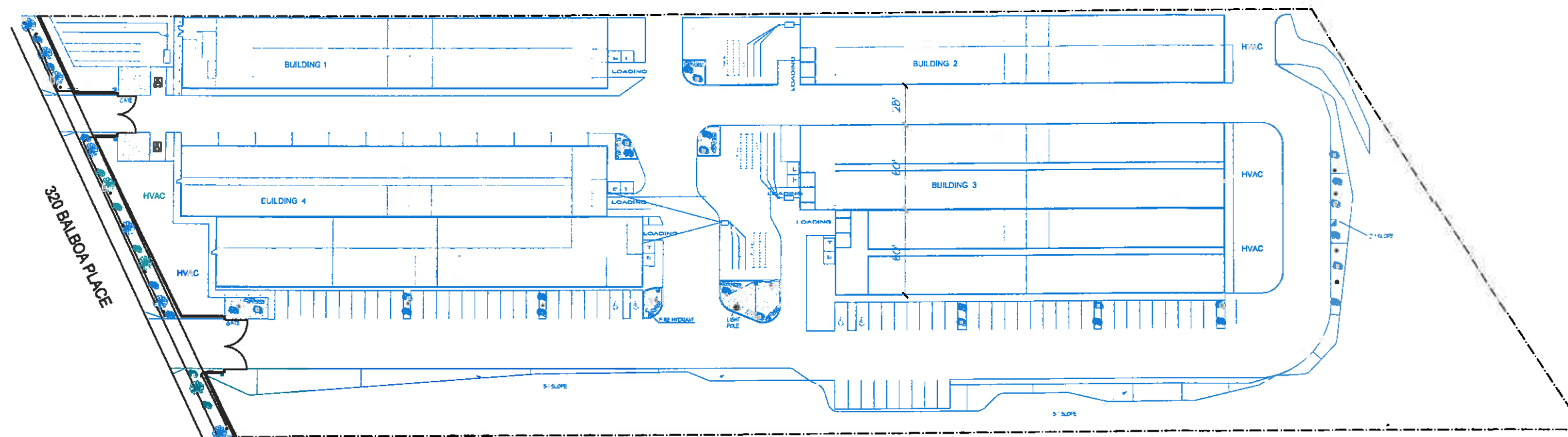


BUILDING 4 RIGHT VIEW

ROBERT MC GOWAN DESIGNS
14286 CALIFORNIA AVE #102
VICTORVILLE, CA. 92392

DEER PARK DEVELOPMENT CORP.
1770 ARROWHEAD AVE.
SAN BERNARDINO, CA. 92405
909-886-4793

ARTIST RENDERING
MEDICAL MARIJUANA FACILITY
320 BALBOA PLACE
NEEDLES CA. 92363



LANDSCAPE PLAN
SCALE = 1:40

	3/4" RED ROCK 3" DEEP	
	12" TO 14" RIVER ROCK BOLDER GROUP	
	24" ARCH GRACE ROCK	
	STATION (24" SERVICE)	
	30" BUBBLER	
	WINDMILL PALM (TRAVELER)	
	SPHERALECA SP. (CALIFORNIA)	
<p>PERMEABLE BREATHABLE DURABLE WEED BARRIER DEWITT PRO-5 (20 YR. 5.0Z) WEED BARRIER</p> <p>ALL VINES AND SHRUBS SHALL BE 5 GAL. ALL TREES TO BE 5.6AL. (10")</p> <p>ANY DISCREPANCIES BETWEEN THE MAX. SPACING CRITERIA AND THE NUMBER OF PLANTS SHOWN ON THE LANDSCAPE PLAN SHALL RESULT IN THE SPACING TAKING PRECEDENCE OVER ANY OTHER INFO. UNLESS NOTED OTHERWISE.</p> <p>3. NOTE: ALL SPECIES ARE LISTED IN ALL COUNTY AND LOCAL CITIES AMERICAN PLANT LIST</p>		

ROBERT MC GOWAN DESIGNS 14286 CALIFORNIA AVE #102 VICTORVILLE, CA. 92392	DEER PARK DEVELOPMENT CORP. 1770 ARROWHEAD AVE. SAN BERNARDINO, CA. 92405 909-886-4793	PRELIMINARY LANDSCAPE MEDICAL MARIJUANA FACILITY 320 BALBOA PLACE NEEDLES CA. 92363	13 of 13
--	---	--	----------------