

2018 Year in Review

City of Loveland Cultural Services Department



LOVELAND ARTS AND CULTURE

Cultural Services

Our Mission

Enriching lives and connecting our community through diverse arts and history experiences.



The Cultural Services Department is comprised of three divisions which offer a wide range of events, activities, services, and educational programs for individuals of all ages.



LOVELAND MUSEUM

The Loveland Museum is an accredited art and history museum that was founded in 1937 by local author, collector, curator, and mountain guide Harold Dunning. Today, the Museum is home to a variety of history exhibits; hosts world-class art exhibitions; and provides family events, adult and youth classes, lectures, poetry readings, and other programming opportunities for the Loveland community and visitors from around the world.



RIALTO THEATER CENTER

The Rialto Theater Center opened as a silent movie theater in 1920 and is currently Loveland's premier performing arts venue, welcoming nationally touring musicians, comedians, and performers as well as local performing arts groups.



ART IN PUBLIC PLACES

In 1985, Loveland made a profound commitment to the arts by becoming the first Colorado city to pass an Art in Public Places Ordinance, which designates one percent of the City's capital projects (valued at \$50,000 or more) for the purchase and ongoing maintenance of art. Through vision, hard work, and collaboration, Loveland has amassed a large, diverse public art collection that creates a sense of place and purpose.



Susan Ison
Director, Cultural Services

Listening describes our focus for 2018. Looking back inevitably leads to thoughts of what comes next. Our discussions with the community on the Museum Expansion Project raised many questions about the future – not just for the Museum, but for the Rialto Theater and the Art In Public Places program.

Consequently, we've launched work on a Cultural Master Plan to ask you to share your visions and wishes for us as we continue to grow with the rest of the community. One has only to look around downtown to see that change is in the air.

The Rialto became a downtown cultural amenity in 1920, falling into disrepair in the 70s, then rising to prominence again in the 90s. Thoughts are already turning to the 100-year celebration. The first Museum was built on its current downtown location in 1956. The public art program is now over 30 years old.

This year will be devoted to exploring ideas about future growth. If you are interested in sharing your thoughts, or have questions, please get in touch with me at susan.ison@cityofloveland.org or (970) 962-2411. Your opinions matter to us and your participation is always appreciated.



Rod Wensing
Deputy City Manager, City of Loveland

From exhibitions, acquisitions, classes, and community events to live performances from the Rialto stage and public art, 2018 reinforced the positive impact that the Cultural Services Department has in our community.

No one person can accomplish the above things alone. It takes a team. The Cultural Services staff has been and continues to be dedicated to their mission of connecting our community to the arts and Loveland's history.

The staff accomplished several things throughout 2018 including welcoming over 30,000 patrons through the Museum doors, generating the largest yearly revenue in the Rialto's history, and growing our public art collection to over 476 works of art.

This past year, the Cultural Services Department moved forward in many areas as the following pages explain in more detail. The staff has been able to look back on 2018 with thankfulness and expect that 2019 will again bring great things.



 **RIALTO THEATER**
LOVELAND ARTS AND CULTURE

The Rialto is a beautiful historical theater. The customer service is wonderful and friendly. We are looking forward to visiting more often.

~ Veronica R.

Beautiful theater and stage in the heart of Loveland. The best concert venue in town by far!

~ Don W.

Rialto Theater

239 Total Events



117 Performances 16 Dance Recitals



57 Movies 33 Other Events



16 Rialto Presents



REVENUE GENERATED

\$406,722



Rental Partnerships

★ 49 ★



Tickets Sold



29,882



Rialto Volunteers



5,251
HOURS

Footc Lagoon Attendance

12,000



Rialto Theater



Steve Lemmon
Rialto Theater Manager

2018 was a year of exciting firsts at the Rialto Theater. The first decision, to create a standalone *aha!* marketing brochure for the Rialto, rather than the combined offering with the Loveland Museum and Art in Public Places that had been the norm for many years, set us down a new path. With this change, we altered the timing of our brochure to a Spring/Summer and Fall/Winter release rather than a quarterly publication, which then led to a brand new 12-show series titled *Rialto Presents*, which spans annually from September to March. The Rialto now programs a marketable series of world-class music, comedy, magic, and dance events in our historical space while still supporting local and regional rental performances. Our inaugural season, with artists like The Vienna Boys Choir, Jim Brickman, Richard Marx, and Collin Raye, saw numerous sold out performances, which speaks to our patrons' approval of this new series. Our revenue

and attendance numbers also speak to this success. For example, 2017 saw 27,897 tickets sold. In 2018, that number jumped to over 44,000 attendees (29,882 tickets) with over \$407,000 in revenue, which are both records for the Rialto.

Another first saw new staging at the beloved Rialto Summer Concerts series at the Foote Lagoon. With our new trussing and staging that allows for a full roof canopy, artists can now perform during this outdoor series without fear of being negatively impacted by our notorious Front Range weather patterns. As well, this structure allows for a better concert experience due to the inclusion of lighting and other production elements. In 2018, over 12,000 patrons enjoyed our free summer programming with artists like Patty Larkin, Face Vocal Band, Ryan Shupe and the Rubberband, and Jarabe Mexicano to name a few.

Lastly, the decision was made in 2018 to rent the Rialto on Sunday mornings to the Rez.church. While this decision brought with it questions and concerns from some members of the community, I can confidently say that most of those objections no longer exist. The positives of this arrangement have included a much-needed donation of a digital console as well as the use of their state-of-the-art video wall for not only the Rialto, but also other renters. Both of these items have dramatically improved production capabilities which allow for bigger and better acts on our stage. Additionally, allocated revenue from this rental has allowed for a new part-time employee and much needed additional funding for programming.

All in all, 2018 was a banner year for the Rialto with more firsts to come!



Foote Lagoon Summer Concerts



KAISER PERMANENTE®
presents

Loveland summer concerts



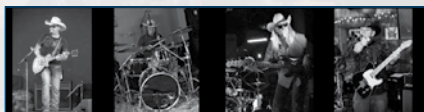
PATTY LARKIN
June 21
Attendance: 1,600



RYAN SHUPE & THE RUBBERBAND
June 28
Attendance: 2,400



FACE VOCAL BAND
July 5
Attendance: 3,400



NARROW GAUGE
July 12
Attendance: 2,000



RUSTY 44 BAND
July 19
Attendance: 1,600



JARABE MEXICANO
July 26
Attendance: 1,000

The City of Loveland has a long tradition of community-centered, free events aimed at bringing people together. In 2018, the Loveland Summer Concert series at the Foote Lagoon Amphitheater successfully continued this tradition. From world-class musical groups performing on our iconic round stage, to a brand-new kids' activity trailer, to some of the area's best food trucks, these six concerts created an unforgettable experience for people of all ages.



We are incredibly fortunate to have a knowledgeable, enthusiastic, and dedicated staff who tirelessly work behind the scenes to keep our astounding collection in excellent condition.

~ Maryjo M.

Art in Public Places teaches our children to appreciate the beauty and dedication that it takes to create and to be a steward of our public places.

~ Jean C.



ART IN PUBLIC PLACES
LOVELAND ARTS AND CULTURE



Public Art Collection

476

Diverse Works of Art

\$10.6 million dollars

Estimated Value

65

BILL REED Teachers

participated in a Downtown Public Art Tour



2018 Dedication

MARK GUGLIELMO

Chilson: People at Play and Chilson: Children Navigating the Waters of Life

The 4' x 8' photo mosaic works illustrate a sampling of the diverse activities offered within this City facility. Each mosaic is comprised of hundreds of images of Loveland patrons, the facility and surrounding environment.



Juried Proposals 8 REQUESTS

for proposals were juried

- The Foundry Parking Garage
- Viestenz-Smith Mountain Park
- Downtown Event Power Cabinet
- Police Regional Training Institute
- The Art Advocacy Project 2D: 6 artworks selected
- The Art Advocacy Project 3D: 6 artworks selected
- Transformations Project – The Foundry Invitational
- Loveland Housing Authority – Sam Betters' Honorary Sculpture



28 ART BY BIKE Participants

June 9 & 23, 2018



Transformations

77

total painted transformer boxes in the collection



Youth Workshops

2

Safe Routes to School

Spring, 2018

International Sculpture Day

April 28 A City proclamation was adopted by City Council in recognition of this annual celebration.



Art in Public Places



Suzanne Janssen
Art in Public Places Mgr

The year began with the Loveland High Plains Arts Council presenting their donations to Benson Sculpture Garden. This year's selections were enthusiastically received into the City's collection. In January, artist Mark Guglielmo photographed Chilson Recreation Center patrons in a variety of activities, which were used to create the two 4' x 8' unique photo mosaics, titled, *Chilson: Children Navigating the Waters of Life* and *Chilson: People at Play* for the main hallway. In conjunction with the May 30 dedication of his artwork, the Museum held an exhibit titled *Cuba in Transition*, featuring several additional large works by Guglielmo.

In the spring, three annual projects, The Art Advocacy Project, Transformations, and Art by Bike brought people into direct contact with local art and artists. Six new artworks were installed in the Library's Galleria and six sculptures were displayed along Fourth Street. The combination of Columbine Gallery, Denny Haskew Studios, Jane DeDecker Studios, George Walbye, Tim Upham, Art Space, and Artworks Loveland made Art by Bike Tours a fun outdoor activity.

Creating public art is most often a collaborative venture. In 2018, AIPP collaborated with the Public Works Department on the Safe Routes to School project at Bill Reed Middle School. To assist with traffic calming measures, AIPP hired Loveland artist Sandi Nelsen to lead after-school workshops where LISA students created tile mosaics for concrete safety bollards and benches to be installed along the school's perimeter in summer 2019. Additionally, AIPP partnered with Studio Vino to host a youth workshop in honor of International Sculpture Day. Twenty-five youth and their chaperones worked with local artists to create magic!

High Plains Dreamer by James Johnson was another collaborative project with the Public Works Department. A monolithic Cor-Ten sculpture measuring 20' tall x 16' long x 6' wide was installed in the newly constructed roundabout at Mountain Lion Avenue. The 5,000 pound sculpture is clearly visible from a distance, creating a significant presence along Highway 34. The artwork was fabricated by the artist's son, Tyler Johnson.

Occasionally, fantastic projects come up unexpectedly. In the fall, Jill Hood, Water & Power Electric Distribution Designer, approached AIPP about creating a unique artistic element for a power cabinet created by the Power Department staff to provide electricity for downtown special events. The structure (also created by City staff) was constructed of an art-deco style electrical pole originally installed in the Big Thompson Canyon during the 1920s. Inspired by historic images, *Legacy* by Mark Lechlitter, a 55" x 52" stainless steel art panel featuring the silhouette of an electrical lineman, was commissioned by the Visual Arts Commission in fall 2018.

Fall 2018 also brought disappointing news when the artists originally hired to create structural elements on The Foundry Parking Garage were unable to fulfill their contract due to the rising cost of steel. Recognizing the need to bring more color to The Foundry site, a new request for qualification was released in December for artists working with dynamic and colorful media. We believe the results will be outstanding!



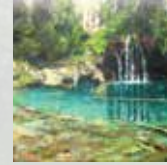
2018 ADDITIONS



Fearless Girl
Kristen Visbal
(Purchase)



*Chilson Center:
Children Navigating the
Waters of Life*
Mark Guglielmo
(Purchase)



*Braids at Hanging
Lake*
Martin Lambuth
(Purchase)



*High Plains
Dreamer*
James Johnson
(Purchase)



Radiant Joy
Scarlett Kanistanaux
(Loveland High
Plains Arts Council)



Gibson
Waybe Salge
(Loveland High
Plains Arts Council)



LinkRacks
Mark Leichter
(Purchase)



Wings
Joe Norman
(Purchase)



Into the Wind
Craig Campbell
(Loveland High Plains
Arts Council)



Elle
Jeannine Young
(Loveland High
Plains Arts Council)



Freedom
Victor Issa
(Loveland High
Plains Arts Council)



The Scyther
Daniel Ingebrigtsen
(Loveland High
Plains Arts Council)



*Chilson Center:
People at Play*
Mark Guglielmo
(Purchase)



*Screaming Dream
of Flowers*
Jan R. Carson
(Purchase)

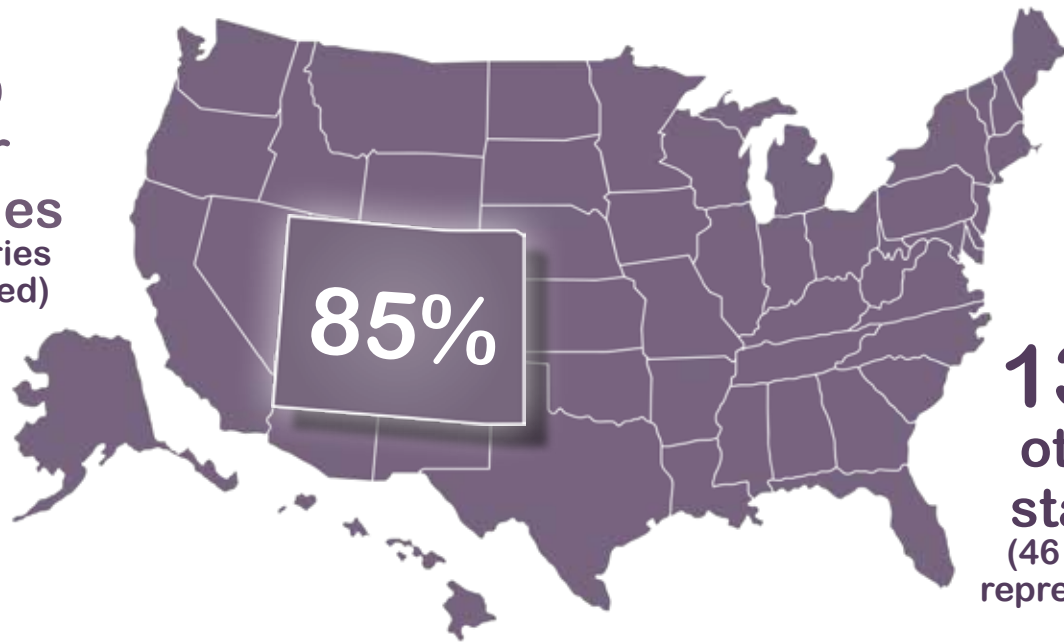


Loveland is known for its art and the artists who stretch their creative wings against the backdrop of the Rocky Mountains. Our history has a rich tapestry of creatives, artists of all media, and entrepreneurs who make Loveland unique. Conversations regarding certification as a Colorado Creative District began in the summer of 2018 between Cultural Services staff and the Loveland Downtown Partnership. By late fall, it became clear that it was time to tell OUR CREATIVE STORY. In the next year, the City and the LDP will begin the process of Creative District designation through the Colorado Creative Industries, a division of the State's Office of Economic Development and International Trade.

Our Creative Story

Museum Visitors

2%
other
countries
(25 countries
represented)



13%
other
states
(46 states
represented)



LOVELAND MUSEUM
LOVELAND ARTS AND CULTURE

I live in Loveland and I am honored to have such a high quality Museum in our city! There are options for every enthusiast to concentrate on, as well as rotating national exhibits that rival any city in the country!

~ William K

Total Attendance

2018 Visitors

32,228

MAIN GALLERY EXHIBITS

- Hung Liu
- Brandon Gellis
- Governor's Show
- Jaune Quick-to-See Smith
- Betty Woodman

Main Gallery Revenue

\$18,543



34

Exhibit Specific Programs

Museum Members



2019

1,129

2018

1,290

Events and Programs Attendance

10,725

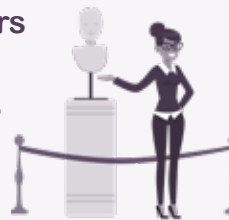
Museum Volunteers



129
Volunteers



3,288
Hours



Exhibitions in all Galleries

22

Classes Offered

Adult: 34

Youth: 28

Tot: 18

Teen: 7



IMAGES TOP TO BOTTOM: Member enjoying the *Brandon Gellis: Innate Confluences* exhibit, *Diana* by Betty Woodman, Artist Hung Liu, *Winter Mountain Scene (detail)* by Claudia Heaphy

History Exhibits



Jennifer Cousino
Curator of History

In 2018, we focused on increasing the visibility of history exhibits and planning improvements to spaces and interpretations. The beginning of the year saw the closing of two community-based exhibits and programming put together with the Loveland Public Library and Loveland League of United Latin American Citizens (LULAC).

Passing Berthoud, a film by Caryn Sanchez, explored a girl's hard decision to go to school away from her close-knit Latino family, and the security of the small town where she lives. *Amor Eterno* featured paintings by Armando Silva inspired by his experiences with Dia de los Muertos. We closed out the year with a similarly themed exhibit, *José Guadalupe Posada*. Posada was a Mexican political printmaker and engraver. His work has influenced many Latin American artists and cartoonists with its satirical acuteness and social engagement. He used skulls, calaveras, and bones to make political and cultural critiques. Prints were on loan from the University of Wyoming Art Museum's Collection.

History as Art continued to explore historic interpretation through the eyes of artists with combined exhibitions. *Tunnel Vision: Colorado Big Thompson Water Project* and *Tunnels* provided the opportunity for local poets and storytellers to share their literary works inspired by the historic Bureau of Reclamation photographs on display. *rEVOLVE: The Art of Cycling* featured art bicycles created by White Rhino Customs, located in Denver. Founder Ian Houghton and his team collaborated with incredible local artists to design and build some of the most jaw-dropping bikes available to date. This exhibit was paired with historical information regarding the development of bikes and was done in collaboration with Colorado Bike Month. *From Saur to Soar: The Synergy of Art & Science* featured illustrations by Gary Raham and model dinosaurs created by Dennis Wilson. Both artists use science to inform their artwork.

The end of the year also brought the end of the Fireside Gallery. Previously home to a maze of individually themed exhibits featuring objects from our historical collection, it is now undergoing a remodel to become a new changing gallery space focusing on one historic theme at a time.



This year was a year of growth for the collections, both physically through acquisitions and in terms of processed materials. We accepted 25



Ashley Yager
Museum Registrar

acquisitions that came from a wide range of sources including: public donations, city transfers, an artwork purchase, items collected within the community by staff, and a few items from the estate sale of the Timberlane Farm Museum. Each of these objects was carefully reviewed by our acquisitions committee and chosen for the unique way in which it reflects Loveland's history. Processing of last year's acquisition of the Reporter-Herald archives continued throughout the year, moved forward with the invaluable help of numerous Museum volunteers. The recorded amount of volunteer hours more than doubled in 2018 with over 1,400 hours served in the collections department. Volunteer projects for the Reporter-Herald archive included processing the microfilm, negatives, and clipping files. We also finished rehousing the earliest Loveland newspapers. These extremely fragile papers from the turn of the 19th century were previously stored in acidic oversized manila envelopes before we rehousing them and put them in archival safe storage. Other projects included the continued unpacking from our large move in 2017, inventorying our book collection, processing archival collections, and photographing and updating documentation of every quilt in our collection.

2018 ADDITIONS TO THE COLLECTION

Northern Plains pipe & Flatheaded beaded braid wraps (Anonymous Donor)
2017's official Loveland Holiday Ornament (Purchase - Winter Holiday Ornament)
Olympic torch photos & negatives (Monica Stiller)
Germans from Russia-traveling trunk (Georgena Hill)
Betty Woodman print- "The White & Black Set" (Bud Shark)
Photos of old buildings in downtown Loveland (City Transfer)
City Dairy Milk Bottle (Florence Pioneer Museum)
Loveland Tourist Brochures (Thomas Brown)
Loveland Feed & Grain pens (Betty Cantu)
The Foundry Cream Ale can (Staff Collected)
2018 Official Loveland Valentine (Staff Collected)
Gas lamp with flower and grape design (Ralph Shaffer)
1954 Hoffman Television (Brad Hammons)
Pennsylvania Dutch Bed (Denis Martin)
Larimer County Loveland Campus brochure (Staff Collected)
Cemetery book (Transfer from City Clerk's office)
1931 City of Loveland Ordinances (Transfer from City Clerk's office)
Portrait of George Bath (Ramona Trotter)
Big Thompson flood interview footage (Colin Glover)
Photo of the BT Canyon after '76 flood (Ron and Pat Dalberg)
Johnson Publishing Co. collection, Ted Thompson checks (William Stamey)
Chieftain yearbooks, "brides" scrapbook (Sonia Rust)
Light pole heart (TJ Julien)
Timberlane Farm items (Purchase from estate sale)
"Everyone is Alienigeno" by Enrique Chagoya (Purchase from Bud Shark)



Art Exhibits



Maureen Corey
Curator of Art

The main goals of the art exhibition program are to put a spotlight on the rich offerings afforded by Loveland's artistic community and to bring a variety of art forms from nationally and internationally known artists to Loveland.

Highlights from 2018 include:

Betty Woodman, an internationally recognized contemporary clay artist whose experimentation changed the face of the medium; Jaune Quick-To-See-Smith, a driving force in the early establishment of art as social message; and *The Artist's Gesture*, with prints from the collection of CU Art Museum that included such powerhouse artists as Richard Diebenkorn and exemplified the value of Loveland Museum's relationship with such important local institutions. The year also included a series of Museum-wide environmentally themed exhibitions, which ranged from the innovative, interactive work of Brandon S. Gellis that made real the human impact upon the landscape, to Nancy Macko's revealing analysis of the role of bees within a healthy environment, and finally, to Hailey Myrick's trash-based ceramic installation, highlighting the beautifully dangerous reality of plastic bottles upon our oceans.

The art exhibitions throughout the Museum are linked by a clear pattern of influence that illuminates Loveland's position in the annals of art history and as an active instigator within the world of contemporary art. In addition to the Main Gallery exhibitions, Loveland Museum presented eleven additional exhibitions in four gallery spaces, including the Mezzanine Gallery, which displays a series of exhibits that combine art and history, and the new Balcony Gallery, a small exhibit space that offers regional artists an additional venue option. From the refined craft-based practice of the Colorado Mosaic Society to the contemporary input of the CSU Fibers Guild, and the rarely seen offerings from the Feral Artists of the Loveland Artist's Collective, Museum visitors were continually challenged and engaged with new directions in creativity that emphasized art's vast potential.



New at the Museum



2018 marked the first full year that the Loveland Museum utilized our new database, PatronManager. The automated system was implemented to provide

members and patrons the ability to register for classes, purchase memberships, and make donations online. The most significant improvement the database has offered staff is the capability to collect, manage, and track visitor attendance, which has greatly simplified reporting capabilities. It has also streamlined front desk operations and reduced administrative workload. The system is robust enough to accommodate significant growth and will sustain the Museum's operations for years to come.



Kimber Kreutzer
Executive Assistant

Education/Programs



Jenni Dobson
Curator of Education

The Loveland Museum has proven to be a fabulous educational tool for school trips, home school students, scout troops, book clubs, family outings, senior activity groups, and more. The Museum has multiple resources to enhance learning at any age—from interactive buttons and costumes for our youngest visitors,

to eye-spy scavenger hunts for older children, to in-depth gallery guides and written interpretation for adults. We also provide classroom outreach, tours, field trips, and programs that are helpful for teachers of art, humanities, and local/regional history.

The Loveland Museum can provide written materials for self-guided tours or we can offer a guided tour. Tours can cover current art exhibitions, local history, or a combination of both. In 2018, the Loveland Museum welcomed over 50 organized tours with 2,500+ participants, including our History Days field trip for second grade students. These tours included high school Spanish students, university art students, history-buff groups, day camps and preschools, local leadership groups, private school students, and several others.

Whenever I lead a tour, I begin by telling the group how the Loveland Museum is unique in that we are an art museum AND history museum. We can cover a huge variety of topics in limited time and space, making an educational trip here a well-rounded endeavor.

As our tours rise in popularity, the cost to the public has remained minimal. Tour development is a primary educational goal for the Museum in the near future, as our art and history exhibits continue to intrigue.

To review our current tour reservation policies, please see our website (www.lovelandmuseum.org) or call (970) 962-2562 for more information.

(Thank you to our 2018 tour docents: Debbie Coffey, Sharon Danhauer, Julia Modest, and Kay Salens as well as our History Day volunteers.)





2018 ATTENDANCE HIGHLIGHTS

Cherry Pie & Halloween Events 6,500 +

Outreach & Guided Tours 1,200 +

History Days 1,073

Number of Programs & Collaboration Events 46

We have seen some wonderful exhibits here. The staff is very friendly and helpful. A nice way to spend an afternoon!

~ Rachelle L.



LOVELAND ARTS AND CULTURE
CULTURAL SERVICES DEPARTMENT



Over the course of the last year, the Cultural Services Department Marketing Team supported 27 art and history exhibits, over 100 Rialto events, and 24 community programs/events.

Several of our printed marketing materials got a well-deserved facelift. Most significant was our *aha!* brochure which historically included exhibits and events happening at the Loveland Museum, Rialto Theater, and Art In Public Places all in one publication. We have transitioned to two seasonal brochures for the Rialto and two for the Museum, which has allowed us the space to promote more of our program and event offerings.

Another big project in 2018 was the creation and launch of our new Art In Public Places website, www.lovelandpublicart.org.

Our marketing goal continues to be the same: to share our exhibits, programs, and events with the diverse Northern Colorado community. Whether it be through billboards, Facebook, newspaper articles, or radio programming, we strive to maintain a strong presence in Loveland and surrounding areas.



Online Presence Snapshot

Website Traffic

RIALTO THEATER

- Rialto Unique Visitors & Pageviews: 51,178 Visitors / 158,922 Pageviews
- 82% New Visitor, 18% Returning Visitor
- 14% of web traffic comes from Social Media
- People visited the Rialto website 73,138 times
- 48% of people are viewing the website from their mobile device

LOVELAND MUSEUM

- Museum Unique Visitors & Pageviews: 24,000 Visitors / Pageviews 72,443
- 85% New Visitor, 15% Returning Visitor
- 5% of web traffic comes from Social Media
- People visited the Rialto website 42,587 times
- 42% of people are viewing the website from their mobile device

Social Media

RIALTO THEATER

- 5,510 Facebook likes, 12% increase from 2017

LOVELAND MUSEUM

- 3,887 Facebook likes, 8% increase from 2017



Looking Ahead

Rialto Theater

- 2020 will be a big year for the Rialto Theater as we celebrate 100 years. Staff and members of the community are already planning of how we will honor this important anniversary. Celebrations will include various events and programs held in the spring and summer of 2020.

Art In Public Places

- Presentations for art for the Foundry Parking Garage artwork were held in January of 2019. The Visual Art Commission has awarded the project to artist Daas for his artwork concept titled, *My Favorite Things*. Painting is expected to begin in late May/early June 2019 and will take 35 to 40 days to complete.
- With the reopening of the Viestenz-Smith Mountain Park, Loveland Art in Public Places hired artist DeWitt Godfrey to design artwork commemorating the 50+ memorials that were washed away in the September 2013 flood. Godfrey has begun fabrication of his design and installation of the artwork is anticipated for late July of 2019.

Loveland Museum

- In April 2019, the City of Loveland purchased the Loveland Reporter-Herald building located on the corner of 5th Street and Cleveland. Future plans for this building include using this space as part of the larger Museum expansion. Initially, the first floor of the building will enable the Museum to expand its educational programs and classroom space.
- A section of the Museum's history exhibits received a facelift this spring. The new Dunning Gallery (previously called the Fireside Gallery) will open in April of 2019 and allows us to share more of our expansive collection with community members and visitors. The first exhibit in the Dunning Gallery will feature a variety of quilts and related objects from the collection.



Rialto

ANOTHER MASTERPIECE
WALT DISNEY'S
"LADY AND THE TRAMP"
CINEMASCOPE COLOR

CONTINUOUS SAT. SUN. & HOLIDAYS from 1-15
A MOVIE MUST SEE
"THE PRODIGAL" TODAY

• CELEBRATING •

100

YEARS

• ANNIVERSARY •

Boards, Staff, Volunteers

2018 Boards and Commissions

CULTURAL SERVICES BOARD

Heather Fortin Rubald, Chair
Elizabeth Skowron
Juanita Cisneros
Dr. Dierdre Cook
Jan DesJardin
Kris Ortmann
Cornelia Winters

John Fogle, *City Council Liaison*

VISUAL ARTS COMMISSION

Abbie Powers, Chair
Angela Brill
Bruce Gueswel
Greg Hoff
Maryjo Morgan
Blas Estrada
Margaret Rosborough
Sara Turner
Jade Windell
Phyllis Moore (Alternate)

Kathi Wright, Leah Johnson,
City Council Liaisons

BACKSTAGE RIALTO

Susan Ruff, Chair
Stef Erion, Vice Chair
Linda Ligon, Secretary
Jan Armstrong, Treasurer
Dal Cisek
George Walby
Natalie Walsh

Staff

Susan P. Ison, *Director of Cultural Services*

Dave Brull
Technical Coordinator

Maureen Corey
Curator of Art

Jennifer Cousino
Curator of History

Roberta Cox
Theater Coordinator

Jenni Dobson
Curator of Education

Sandi Elliott
Front House/Event Coordinator

Dennis Fisher
Asst. Tech Coordinator

Eric Franklin
Exhibits Preparator

Roberto Holguin Aleman
Technical Coordinator

Tegan Hollen
Business Services Specialist

Suzanne Janssen
Public Art Manager

Jess Killingsworth
Marketing Coordinator

Kimber Kreutzer
Executive Assistant

Steve Lemmon
Rialto Theater Manager

Michelle Standiford
Graphic Designer

Ashley Yager
Registrar

Lifetime

Erion, Doug
Jensen, Chris & Shields, Deborah

Benefactor

Garnand, Nanci
Mueller, Teresa and Paul

Patron

Cisneros, Juanita & Donald Jesik
Cook, Dierdre & Don
Garrett, Rae Ann M.
Sethre, Earl & Lisbeth
Winer, Stephen & Pamela

Contributor

Ashcraft, Philip & Lois
Belote, Jay C. & Linda G.
Brewer, Carol & Paul Alaback
Domseif, Steve & Karen
Gaylord, Harvey & Suzanne
Hogan, Shirley
Lefler, William
Macdonald, Bette
Nicholson, Sandra
Schilling, Richard & Marlene
Sloan, Cathy
Winters, Comelia & Donald

Holmes, Mary Ellen
Ison, Susan
James, Scott
Kincanon, Lynn
Lehrer, Victoria
Ligon, Linda
Ortmann, Kris
Reak, Carol & Brad
Reynolds, Charles & Sandra
Robinson, William & Elisabeth Derichs
Ross, Elizabeth & Claude
Ward, Ken & Lori Hvizda Ward
Williams, Kathy & Randy

Gullikson, Mary & David
Hammond, Lynn & Norma
Hoff, Greg & Miriam
Johns, David & Debra
Jones, Terri & Patrick Henry
Kaufman, Linda & David
Kenyon, John
Konzak, Jeff & Julie
Morse, Tim & Karen
Moskowitz, Daria & Larry
Newbrey, Robin & Sandy Capps
Palmquist, Mike & Jessica Richards-Palmquist
Pitts, Sarah
Raymond, Dorothy & Peter
Raynolds, Bob & Mary
Riblett, Charles & Carolyn Taylor
Schockner, Mel & Jan Rosetta Schockner
Scudamore, Jim & Judy
Stevens, Bruce & Sharron
Stewart, Betty & John
Taylor, Monty & Melissa
Tully, Mary
Vallera, Robert & Holly
Whitenight, Jim & Nicole
Woody, Robert & A-Young

Arts Advocate

Bretting, Denise & Mark
Cox, Keith & Sue
DeDecker, Jane & Kyle Dallabetta
Drage, Robert & Susan
Eatman, Bob & Ann
Farley, Phil & Janice
Fickel II, R. Bruce
Findley, Joyce & Sharon Newman
Franke, George & Barbara
Hill, Margaret & Charles
Holland, Mary

Supporter

Bentrott, Craig & Karen
Boyum, Carolyn & Gerald Fleischer
Bunde, Becky & Con
Carlisle, Cynthia
Childers, Marvin & Dorothy
Childers, Dan & Patty
Denton, Clayton & Patricia Denton
Derjue, Rita & Carle Zimmerman
Dunnington, Ken & Mary
Frasier, Bill & Gail
Getson, Jennifer & James

Museum Members

FAMILY

Adams, Steve & Gretchen
Andre, Patti & Bob Smith
Anthony, Pam & Darcy
Armbruster, Jason & Sharleen
Bauersfeld, Reid & Diane
Boland, Lynn & Katherine McQueen
Bradford, Nancy
Brill, Jason & Angela
Chavez, M. Judy & Maria Spoon
Christiansen, Brenda
Cofrin, Laura
Eldridge, Bryce & Brandy
Fellure, Jacob & Nicole
Fogarty Regalado, Jenifer & Virginia Regalado
Fogarty
Francis, Susan & Robert
Godwin, Robert, Alan & Patricia
Harshberger, Bruce & Janet
Hoot, Robert & Liz
Hunter, Sandra & Arthur Korotkin
Hutchinson, James & Linda
Jackson, Mark & Michelle Myers
Kern, Sanford
Knuth, Melody & Susan Morse
Lapierre, Diane & J.R.
McGovern, Stephanie & Jay Neighbors
Multer, Tricia & Dev Multer
North-Decunto, Dannielle & Matthew Flynn
Patterson, Jon & Rachel
Samuel-Burnett, Sosamma
Schindler, R. Lee & Susanne Durkin
Swindler, Sharon & Bob
Timpson, Bill & Gailmarie Kimmel
Windell, Jade & January

DUAL

Aldrich, Richard & Isobel Macdonald
Augenstein, Dan & Deborah
Babcock, Marina & Paul
Beedle, Phil & Lynn
Bingham, Eve & Bruce Johansing
Borrego, Kim & Aimee Thompson
Buckner-Opler, Evi & Paul Opler
Busby, Scott & Anita
Campagna, Bob & Susan Hoyler
Caufman, Joyce & Krista
Clark, Jim & Jean
Colachis, Roseanne
Colicchio, Nicol
Conroy, Mike & Beth
Conroy, Duane & Margaret Tullis
Cook, Don & Nancy Kain
Cooper, Heather & Mike Klage
Custer, Stephanie
Dalbey, Damon & Stacey
Davis, Alfred & Marilyn
Davis, Jean & Jeff
Deike, Doug & Karen
Demainew, Robert & Paula
Dobson, Ralph & Annie Viktora
Dotson, Jan
Dougherty, Peter & Emily Cumes
Dubois, Lisa & Brad
Elyce, Kristi & Jorge Vargas
Evans, Beverly & Margaret Sumner
Evans, Scott & Janette
Fanning, Kathi & Greg
Feagin, Jerre & Amy
Focht, Charles & Laura
Ford, Jim & Nancy
Freeman, John & Judy
Fultz, Kathy & Dennis Veilleux
Garcia, Gil & Susan
Garcia, Fred & Nancy
Garklavs, George & Donna Lambert
Glanz, Daniel & Erin Eulenfeld
Goodman, Jenny & Doug Barker
Gould, Monica & Scott
Gressianu, Christina & Vi Wickam
Gueswel, Bruce & Cyndi
Guilboard, Cindy & Doug
Gupta, Kalpana
Heaton, James & Arline
Heddens, Virginia & Elizabeth Smith
Hoag, Jeff & Ruthann
Holladay, Gordon & Ruth

Hollen, David & Maureen
Jecminek, Susan
Jernigan, Charles & Peggy
Jessen, Ken & Sonje
Johns, Chad
Johnson, Dayton & Joyce
Johnson, Scott & Susan
Jordan, Colby & Sharon
Kindschy, Jon & Peggy
Knechtges, Dave & Lois
Kokkin, Kirsten & Jan Skalebraten
Kosach, Becky & Brian Martisius
Kreutzer, Jack & Kimber
Lamb, Dennis & Patricia Skrentny-Lamb
Langfeldt, Gene & Pat
Leap, Brenda & Alice
Leech, Nancy & Grant Dickson
Lehman, Robert & Virginia
Lew, Paul & Rose
Linsenmann, Richard & Nancy
Little, John & Katy
Love, Harry & Jody
Lozen, Bob & Linda Stehle
Maddox, Pam & Mark
Mahler, Donna & Jud Brown
Lewis, G. Mark & Laura
Martel, Dian & Jim Hoemann
Mason, Bob & Diane
Matthews, Shannon & Eric
Mattoon, Jude & Jim
McClintock, Kimberly & David Wroblewski
McComb, Amy
McKee, Bob & Kathy
Mergelman, Audrie & Ed Darchuk
Mignery, Herb & Sherry
Milewski, David & Kristine
Milhous, Marilyn & Maya
Mioduski, Jr., Ted & Eileen Mioduski
Murphy, Marilyn & Robert Medlock
Nash, Douglas & Marjorie
Navratil, Heather & Dick
Nesler, Karen & Tom
Norman, Joe
Nugent, Elijah & Chrissy
O'Keefe, Bob & Earlene
Plummer, Kathryn & Dee Koloski
Ragin, Howard & Sally
Ray, Julie & Ken
Robinson, Geoff & Julia
Rogers, James & Deanna
Rosborough, Margie & Riccardo Dreith
Ross, R.
Rudmanis, Inara & Terry Cairns
Rutledge, Doug & Sheila
Ryan, Emilie & Clayton Fraser
Savig, Berndt & Gundar
Schell, Stephen & Susan
Schmidt, Ashley & John
Severance, Doug & Janet
Severn, Craig & Anne
Shea, Jill & Kevin
Sheldon, Lisa
Smaby, Jan & Alan Lipowitz
Smith, Jim & Sandy
Solof, William
Sonnenberg, Jordan & Cassie
Staff, Adrienne
Steinberg, Barbara & Jack Ghilarducci
Strand, Kyle & Laura Dusbabek
Street, Moses & Penn
Suniga, Michael & Mary Ewen
Sutton Aeling, Laura & Doug Aeling
Swanson, Andrew & Tyler Smith
Thomas, Garth & Darla
Thornton, Gary & Rita
Tossy, Laurel
Tucker, Colleen
Tuneberg, Jerry & Christina
Tuttle, Ron & Marilyn
Ulberg, Kent & Veerle
Umile, Anthony & Laurel
Valdivia, Sal & Laurie Wells
Van Dell, Don & Vicki Dilworth
Watkins, Diane
Watson, Amanda & Marianna Dundas
Westdahl, Gordon & Lola
White, Laurie
Wible, Kevin
Wilson, Marc & Virginia
Woodbury, Ellen & Brian Wendt

SENIOR

Acre, Judi
Ague, Ann M.
Ahlstrom, Janet & Paul
Allen, Neil
Allison, John & Virginia
Allman, John & Carole
Amsler, Nancy
Amundsen, Jr., Ole M. & Carol Abitabilo Ast
Anderson, Anne
Anderson, Dave & Carol
Anderson, Linda
Anhorn, Sharon
Arminio, Tina & Wayne Snodderly
Armstrong, Janet & John Wright
Arndt, Patricia
Avery, Ann & Jim Isenhardt
Babcock, Jane
Baccari, Sue
Bachesnyder, Kaye
Baker, Nancy
Baldwin, James & Marlys
Balice, Judy & Wayne Covington
Balis, Helen
Ball, LuAnn
Barnes, Howard
Barton, Carole & Dick
Bates, Roger & Anne
Bator, Thom
Baumann, Eileen
Becker, Ron & Carole
Beller, Sher
Bendon, Jean
Bennett, Sarah
Bercaw, Louise
Berhost, Trish
Bernier, Marilyn
Bersch, Linda
Bess, Jerry
Bierstein, Karin
Bigus, Isabella
Black, Marjorie
Bobowski, Deb
Bolesta, Pam
Bonsall, Susan
Boone, Sam
Bostwick, Bob & Fran
Bowling, Lorene
Bowling, Susan & Mike Burke
Boynton, Bruce & Teresa
Brande, Frank & Kay
Brayshaw, Susan
Brown, Edie
Brown, Heather
Brown, Maggie
Bulik-Hocum, Kristina
Buness, Sandra
Burke, Joanne
Carhartt, Mary
Carroll, Holly
Carter, Donna
Carver, Phyllis
Case, John & Barbara
Cashman, Linda
Cassells, William & Margaret
Cates, Beverly
Chase, Miriam
Chimonas, George
Christensen, Brian
Christians, Donna
Clark, Roger & BJ
Clemons, Jerry & Kathryn
Clough, Jerry & Judy
Cochran, Curtis
Cohen, Credith
Condit, Carol Kay
Conrad, Martha
Conte, Linda J.
Cook, Philip & Carole
Cooper, Jim & Rhonda
Cooper, Margaret
Croonquist, Mary
Cumming, Gail
Cummings, Judy
Danbom, David B. & Karen R.
Danhauer, Sharon
Darnell, Debra
Darracott, Mary
Daugherty, Nancy
Davidson, Linda
Davis, Helen B.

de Ryk, Adele
DeGood, Kae
DeNio, Lynne
Derhak, Linda
DesJardin, Jan
Devine, Lia
DeVore, Pam & Ross Busby
Digby, Jim & Nancy
Dildine, Chris & John
Dodge, Deborah
Donaldson, Dave & Susan
Donavan, Marcia
Dowling, Karen
Driver, Susan
Dungy, Madgetta
Eads, Renate
Eastman, Adele
Eastman, Mike & Elaine
Edwards, Diane
Edwards, Geraldine
Edwards, Mary
Egger, Carole
Eibert, Roy & Kathy
Eichmann, Sylvia
Elvheim, Cam
Ephland, Connie
Fager, Barbara
Fain, Bryan
Falconer, Rev. Sylvia & Jerry Mangan
Farley-White, Mary L.
Farr, Anne
Feldman, Rosalie
Fernandez, Jorge & Ellen B.
Fine, Cathy
Finley, James
Fish, Robin & Carol
Fitzgerald, Paula
Fortin, Ken & Carol
Foster, Jim & Lola
Frey, Celia
Fuller, Ralph & Beth
Fulner, Gerald
Gallagher, Joanne
Gallagher, Peggy
Garber, Judy
Garcia, Linda
Getz, Camille
Gilberto, Rebecca
Gilroy, Judith
Glover, Brenda
Godbey, Judy
Gomez-Smith, Kari & Bill Smith
Gordon, Hazel
Grady, Sharon
Grassens, Leo
Grassi, Ronald & Catherine
Green, Marcia
Griebe, Carolyn
Grill, William
Grob, Rebecca
Grotenhuis, Arthur & Janet
Gutierrez, Cecil & Kay
Hadden, Beverly
Haesemeyer, Elizabeth
Hagedorn, Susan
Hagge, Curt & Carmen
Haines, Nancy
Hall, Sara
Haller, Marjorie
Halverson, Dolly
Hanson, Patricia
Harding, Darrell & Jo Ann Hovanec
Harms, Ron & Sally
Harr, Bonnie
Harris, Susan
Hart, Lois & Arn
Hartman, Kathy
Haskew, Denny
Haupt, Charles & Sethia
Hawkins, Mary
Heller, Marilyn
Helmets, Martha
Henry, Mary
Hildebrand, Danna
Hill, George
Hilliker, Dan & Sandy
Hiner, Mary & James Harrell
Hisey, Regina
Hodges, Martha Jean
Hodges, May
Hoffmann, Lynda

Museum Members

Hogg, Loretta
Holmes, Anne
Hood, Kay
Hopkins, Kathleen
Horner, Pat & James
Housewright, Loy & Jane
Hunter, Elsie
Huth, Stephen & Patricia
Ingram, Dr. James & Peggy
Jacobsen, Janice
Jacobson, Sybil
Jakobsson, Nancy
Jansen, Deborah
Javernick, Ellen
Jeremiasen, Bob & Sharon Sheets
Johnsen, Bernie & Ann
Johnson, Bruce
Johnson, Don & Charlotte
Johnson, Jerre
Johnsen, Mary Claire
Johnson, Richard & Winnie
Jones, Sue Ellen & Richard R.
Jones, Susan
Julian, William & Dorothy
Juneau, Mac & Polly
Kanowitz, Martin & Chris
Kauffman, Louise
Kaye, Shannon
Kearns, Jeanne M.
Keil, Ann
Keller, Anne
Kelman, Mary
Kelton, Ronald & Susan
Kennemer, Phyllis
Kibler, Carolyn & Bob
Kiehn, Carolyn
Kietzmann, Darwyn & Jackie
Komar, Clara M.
Kounkel, Caroline
Kreiner, Karen
Krempel, Shirley
Krug, Vicki L.
Kruse, Barbara
Kuntzman, Bill
LaBorde, John & Carol
Laframboise, George M. & Catherine
Dawson-Laframboise
Lake, Pam
Lambert, Barbara
Landis, Mary
Larkin, Ruth
Lederer, Dr. Peter & Jane
Leonard, Dave
Leonard, Linda
Linden, Susan
Lingenfelter, Carol
Lipp, Ronnie & Dan
Littlefield, Diane
Littrell, Jan
Loader, Ann
Locker, Lynda
Lorenz, David
Lovelace, Clayton & Mary
Lucas, Donna
Lucke, Liz
Lynn, Cheryl
Marcoe, Patti
Martin, Barbara C.
Martinez, Annie
Masterson, Anne
Mathis, Katherine
Matson, Lynn & Lois
Mayger, Bonnie
Mayo, Donna & Earl
McCoy, Marge
McCreary, Margaret & Milan Karspeck
McDonald, Ann & Stuart
McDonald, Annie
McGarry, Leo & Sandra
McGill, Carol A.
McGinley, Pat
McGrath, John & Marlys
McIntosh, Tom & Jan
McKenzie, Don & Marcy
McKnight, Judy
McMurry, Carol & Pat Spieles
McNamara, Linda
Meade, Patricia
Meek, Paula
Melchior, Susan
Meuret, Diane

Michieli, Gene & Betsy Winston
Middleton, Sue
Miller, Diana
Mills, Dave & Diane
Milne, Zora
Milway, Edward & Gaea
Mollohan, Judy
Moninger, Bill & Sally
Moody, Susan
Moore, Ann
Moore, Douglas & Rosemary
Moore, James & Phyllis
Morgan, Maryjo
Morger, Janet
Morris, Giles
Morris, Verlyn
Moser, Carol
Mueller, Harry & Susan Brand
Mulroney, Marsha
Muriby, Karl & Joanne
Najjar, Linda
Neal, Carol
Neal, Mel & Delores
Neal, Mim
Neisen, Sharon
Neitenbach, Meredith
Nelson, Cindy & Nick
Nevriy, Jane
Nichols, Jan
Nielsen, Kathy
Niemeyer, Lynne
Ninneman, Connie
Nowack, Gerhard & Caroline
O'Brien, Pat
O'Donnell, Dan & Joyce
O'Farrell, Nancy & David
O'Neil, Judith
Orlowski, Lynn
Orman, Jack & Caroline
Orourke, Renie
O'Rourke, Tom & Phyllis
Osmundson, Linda
Oswald, Donna
Paden, Don
Palmer, Doug
Park, Mary Sue
Parker, David & Els
Patterson, Evan & Veronica
Pearce, Mike & Carolyn
Percival, Dave & Geri
Perkins, Lequetta
Perry, Mike & Sharon
Perry, Shannon
Peterson, Becky
Phillips, Jerry
Pitcher, Merritt & Judy
Platz, Charles & Cheryl
Pomeroy, Sherry & Pattie Cowell
Popa, Jim & Merry
Prescott, Patty
Przybeck, Ruth
Quartarone, Jim
Rabe, Carol Sue & Richard Greenwall
Racicot, Rhonda
Ralph, Reta & Charles
Rathbun, Turid
Ravenscroft, Gerald
Rayburn-Wolfe, Ann Marie
Reichhardt, John & Ann
Rein, Sharon
Retzer, Helmut
Reynolds, Juanita
Richard, Patricia
Ritchie, Darlene
Robertson, Sharon
Rohnke, Deanna
Roos, Sheri
Rowe, Sharon
Rowland, Tom
Rush, Richard & Carol
Rutledge, Amanda
Saelens, Kay
Sage, Donna
Sage, T & Lynne
Sager, Truman & Margaret
Sanders, Judy
Saunders-White, Pat
Schaffner, Marie
Schiller, Rick
Schmich, Gerry & Jacqua
Schmidt, Jo

Schoon, Linda
Scott, Ruth
Seastone, Star
Sebern, Pat
Selland, Terry
Serns, Peggy & Charles
Sharp, Lucy
Sholes, James & Lila
Skold, Melvin & Faith
Smith, Barbara
Smith, Jan & Nora
Smith, Romey & Marolyn Lemming
Sorrrell, Doug & Carol
Spurlin, Guiditta
Stahlin, Rick & Bonnie
Stangel, Neil & Linda
Stauffer, Dolores
Steiner, Gary & Luanne
Steinruck, Jeanne B.
Stephenson, Joan & Dennis Bucher
Stewart, David J.
Stone, Ronda
Stranberg, Jim & Sharon
Strayer, Connie
Sullivan, Judge John-David
Summerain, Skye
Suter-Gibson, Michael & Linda
Sutton, Paula
Swett, Marge
Tanner, Edith & Roy
Tarantino, Jean
Temmer, Mari Lind
Temple, Lou Ann
Tharp Ann, Linda
Tharp, Ken & Marty
Thielen, Ken & Lee
Thiets, Sandi
Thompson, Dale & Bonnie
Tillotson, Robert
Tippett, Delores
Tomlin, Carol M.
Toomey, Midge
Torson, Bob & Georgia
Towill, Leigh & Jill Kreutzer
Van Nuys, Susan
Viglienzone, Barbara
Waldner, Lucille
Wall, Jo Anne
Wallace, Jacklyn
Ward, Janice
Warner, Jo Anne
Warrick, Lyn
Washecka, Gail
Waters, Linda
Waukau, Ruth
Weber, Philip & Betty
Wee, Pamela & Greg Bridwell
Weir, Pearl Ann
Weiss, Beverly
Wells, Jerilyn & Dr. Richard
Wells, Stan & Rhondda
Wells, Vera
White, Ina
Whiting, Roger & Jane
Wick, Margaret & Daniel Merz
Wiedmann, Dr. Arietta & Anndevoy Ryan
Wienbroer, Ralph & Faye
Wilbur, Reuben & Shirley
Wilken, Karen
Will, Doug & Trish
Wilson, Kathy & Jerry
Wilson, Patricia
Wilson, Terin
Winder, Kathleen
Witt, Janice L.
Wood, Anne
Woolhiser, Kay
Worrall, Nell
Wright, Janet
Wright, Judith
Wright, Kathi
Wrought, Judy
Wykoff, Debra
Young, Ron
Zack, Yvonne & Jim
Zimmerman, Herb

INDIVIDUAL
Applegate, Marcia
Arnold, Janice L.
Babcock, Mark
Barber, Jane
Beard, Deb
Bender, Julie
Bock, Regina
Boston, Stephen
Botero, Ana Maria
Bowlin, Tammy
Brown, Danielle
Callender, Joy
Carlson, Jette
Chan, Poling
Clark, Jesse
Clark, Mary Jo
Deery, Jennifer Lynn
Diver, Katy
Dodge, Robin
Ekeberg, Margie
El-Antably, Camellia Samir
Engel, Jacquelyn
Ertman, Kerri
Fiore, Anne
Folwell, Gail
Franklin, Elizabeth
Garcia, Davetta
Gaskins, Raye Ann
Greaney, Pam
Hansen, Jodi Kay
Hawkins, Jessica
Hines, Shelley
Hoeft, Beth
Hopkins, Angela Canada
Hunt, Pat
Janda, Bob
Janssen, Suzanne
Kessler, Ann
Kiessling, Jennie
King, William
Kinsey, Barbara
Kirk, Cindy
Lechleither, Beth
Leszczynski, Kim
Lewis, Leslie
Lollar, Robert
Magnuson, Adri
Magruder, Mary
Martin, Jennifer
McCreary, Mary
Milner, Jennie
Moore, Diana
Museum, Loveland
Neuville, Melissa
Noffsinger, Jeffrey M.
Ohs, Lory
O'Rourke, Kathleen
Peeler, Kayo
Powers, Abbie
Rohnke, Kevin
Rubald, Heather Fortin
Sampson, Timmy
Schumacher, Karen
Shaffer, Joan
Skeffington, Julie
Stith, Gwen
Straight, Dixie
Strong, Brenda
Suchecky, Mary
Thornburg, Brenda
Trafford, Mary
VanGieson, Laura
Veile, Kathleen
Vialpando, Amy E.
Walner, Hari
Wood, Hannah

STUDENT
Henze, Elizabeth
Pritchard, Haley Jo



LOVELAND ARTS AND CULTURE
CULTURAL SERVICES DEPARTMENT