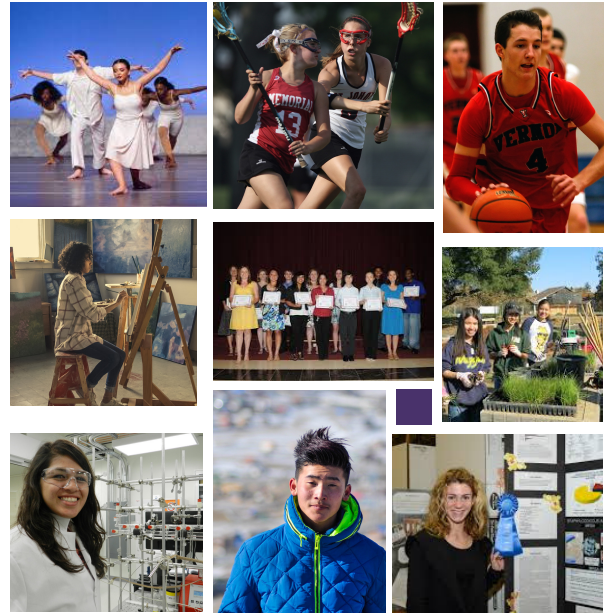


HELP YOUR STUDENTS STAND OUT



LIFESTREAM DIGITAL Memory Box®

Every student has a story. LifeStream Digital Memory Box provides the baseline for students to tell that story. Combined with the support of their College Counselor, students will be able to articulate their story more effectively throughout the application process.



DIGITAL STORAGE SOLUTION

LifeStream Digital Memory Box organizes digital media in a standardized, user-friendly way. Through "memories", students can maintain projects, best academic work, athletic and/or artistic talent, community service efforts, awards, and more - all the things College Counselors are already asking students to save, but are currently being saved in a variety of ways.



MULTI-MEDIA FORMATS

Information can be saved in nearly any digital media format including Word, Excel, .PDF, PowerPoint, audio files, images, video files, computer code, and more. Plus, there's **no integration** needed with your school!



FUNCTIONAL DESIGN

The innovative, consolidated design is easily editable, and is the first platform to include life skills and character traits as an option for identification within each memory. College Counselors can support students by helping them with their descriptions and tags to make sure they are appropriate and effective.



INCREASED EFFICIENCY

The standardized format helps increase efficiency for the counselor as well as the student. With LifeStream Digital Memory Box, you have a strong baseline for the application activities, essay, resume, and interview!



PORTFOLIO FEATURE

Students can supplement their application to college with a custom **LifeStream portfolio** in 2 easy steps! College Counselors can help students select relevant memories to **stand out** in the application process with a digital portfolio.

HELPING ADMISSIONS

LifeStream Portfolios are quick, easy, and free for Admission Professionals, Coaches, Alumni, and/or others to view.



EVALUATING GOOD "FIT"

LifeStream portfolios personalize the application, going beyond grades and test scores. The identified attributes, life skills, and character traits help admissions staff get to know more about who the student is and what they can do - their story - to know if the student might be a good fit for their college or university.



SUPPORTS ADMISSION TEAMS

LifeStream portfolios help admission teams formulate a more informed decision based on a more robust, holistic assessment of each applicant.

JOIN THE LIFESTREAM COMMUNITY!

Schools and colleges using and/or accepting LifeStream Digital Memory Box and LifeStream portfolios are part of the LifeStream Community! Membership is **FREE**.
Join us today!

www.LifeStreamDigital.com/Community-signup/

WWW.LIFESTREAMDIGITAL.COM