

STRUCTURAL STYLE ASSEMBLY 2 SPD. SS

REVISION AND PRINT RECORD

REV	PRINTS	SEPARS	TO	DATE	FOR

ITEMS LEGEND

- ① HANGER COVER ATTACHED TO HEADER USING 1/4" BOLTS, WASHERS AND NUTS
- ② HEADER
- ③ STRUT TO WALL BRACKETS & STRUT EXTENSION (1 3/4" X 5")
- ④ DOORS
- ⑤ HEAD JAMB
- ⑥ DOOR STOP (STUD TYPE) LONG RUBBER BOOT, w/ 2 WASHER
- ⑦ SIDE JAMBS
- ⑧ SILL ANGLE 3/8"
- ⑨ 2 SPD. SILL(S 1/2")
- ⑩ BRACKETS (2 1/2" X 7") ATTACH JAMB TO SILL
- ⑪ FASCIA
- ⑫ MANSORY ANCHORS
- ⑬ 10 GA. GALV. ANGLE GROUT PLATE (2 1/2" X 2 1/2")
- ⑭ WALL BRACKET (4"X4"X3") ATTACH STRUT & FASCIA TO WALL USING 3/8" BOLT
- ⑮ STRUT CHANNEL 10 GA. GALV.
- ⑯ GIBBS
- ⑰ (9 Ea. PER ENTRANCES) ANCHOR 3/8"X 3" HILL II KWIK BOLT II #45363
- ⑱ 3/8"X1" SQUARE HEAD
- ⑲ #12X 3/8"
- ⑳ 1/4"X 3/4"
- ㉑ 3/8"X1"
- ㉒ 1/4"X 3/4"

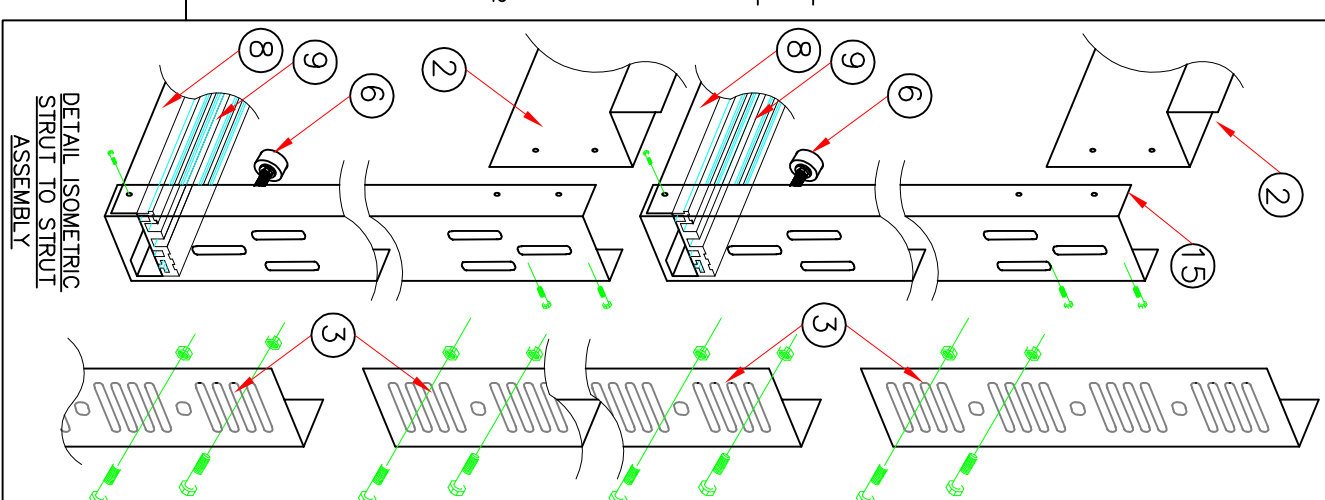
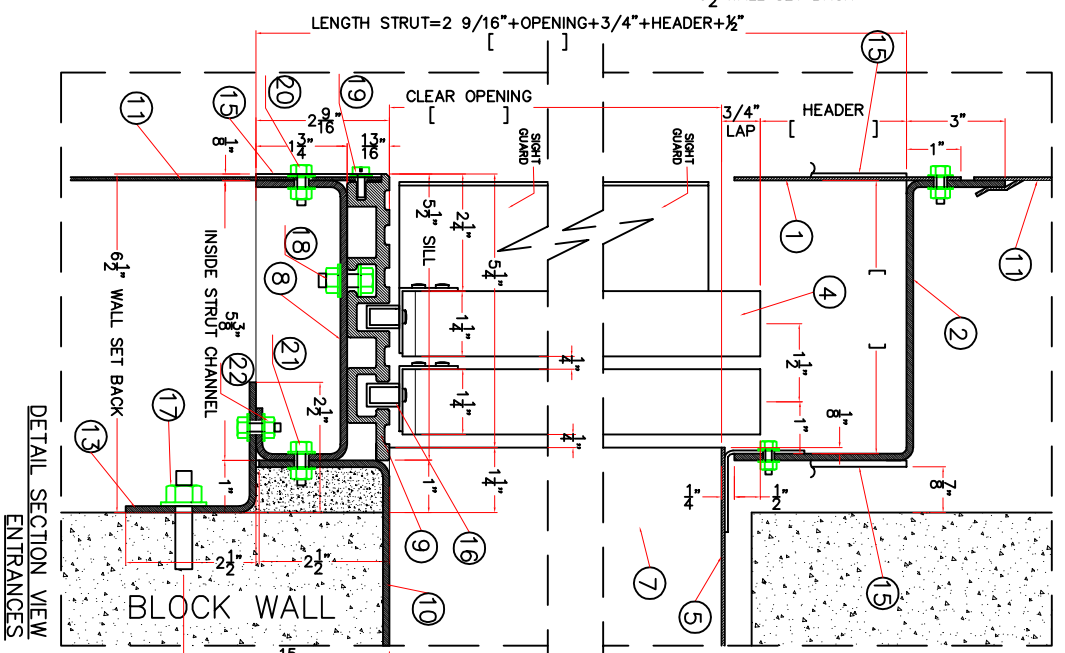
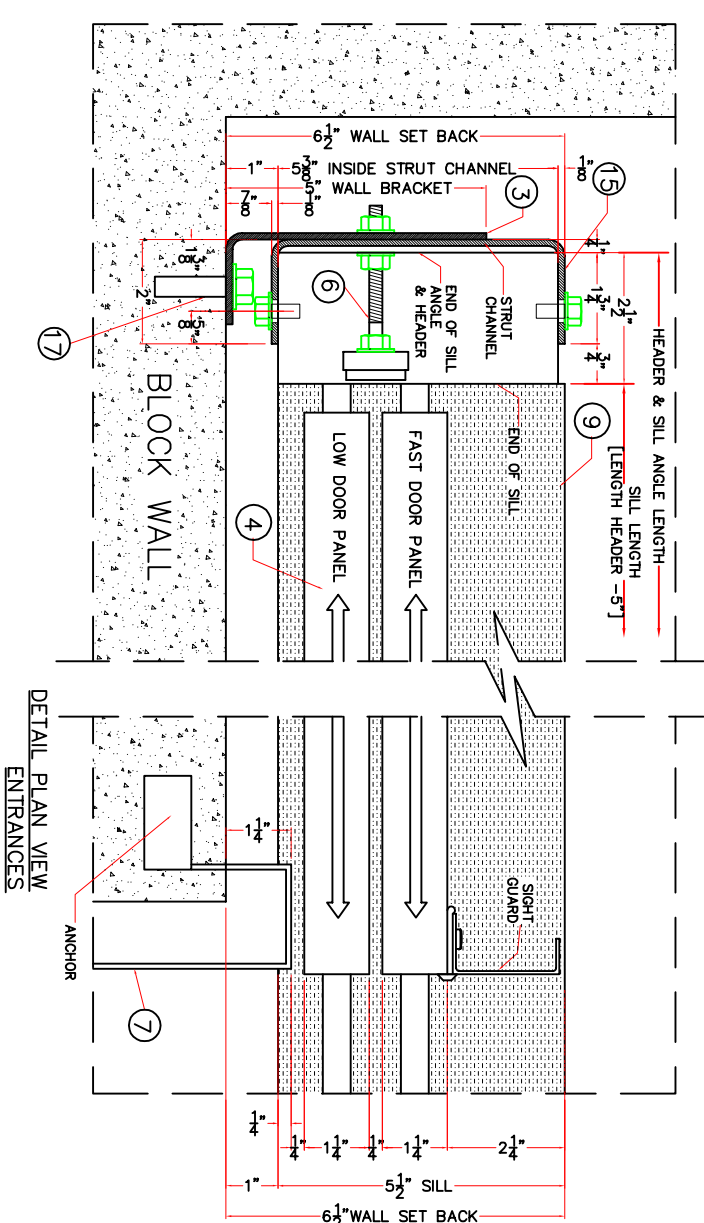
STEPS FOR ASSEMBLY

- A) LOCATE CENTER LINE OF OPENING.
- B) CENTER SILL SUPPORT BASED ON MEASUREMENT AT ENTRANCE CENTER.
- C) ATTACH ANCHORS 8" BELOW TOP OF OPENING.
- D) ASSEMBLE COMPLETE ENTRANCE.
- E) MOUNT ENTRANCES FRAME ON ANCHORS.
- F) ADJUST ENTRANCES.

KOHLER ELEVATOR INDUSTRIES

4118 NW 138 Street, OPA-LOCKA, Florida, 33054
 PHONE (305)887-7037 Fax (305)888-0106
 INFO@KOHLER.COM WWW.KOHLER.COM

CUSTOMER:	
JOB:	
LOCATION:	
ARCHITECT:	SCALE: NONE
DRAWN BY: MARIANO	
JOB NO. [CUSTOMER NO.] P-ORDER NO. SHEET NO.	1 OF 1

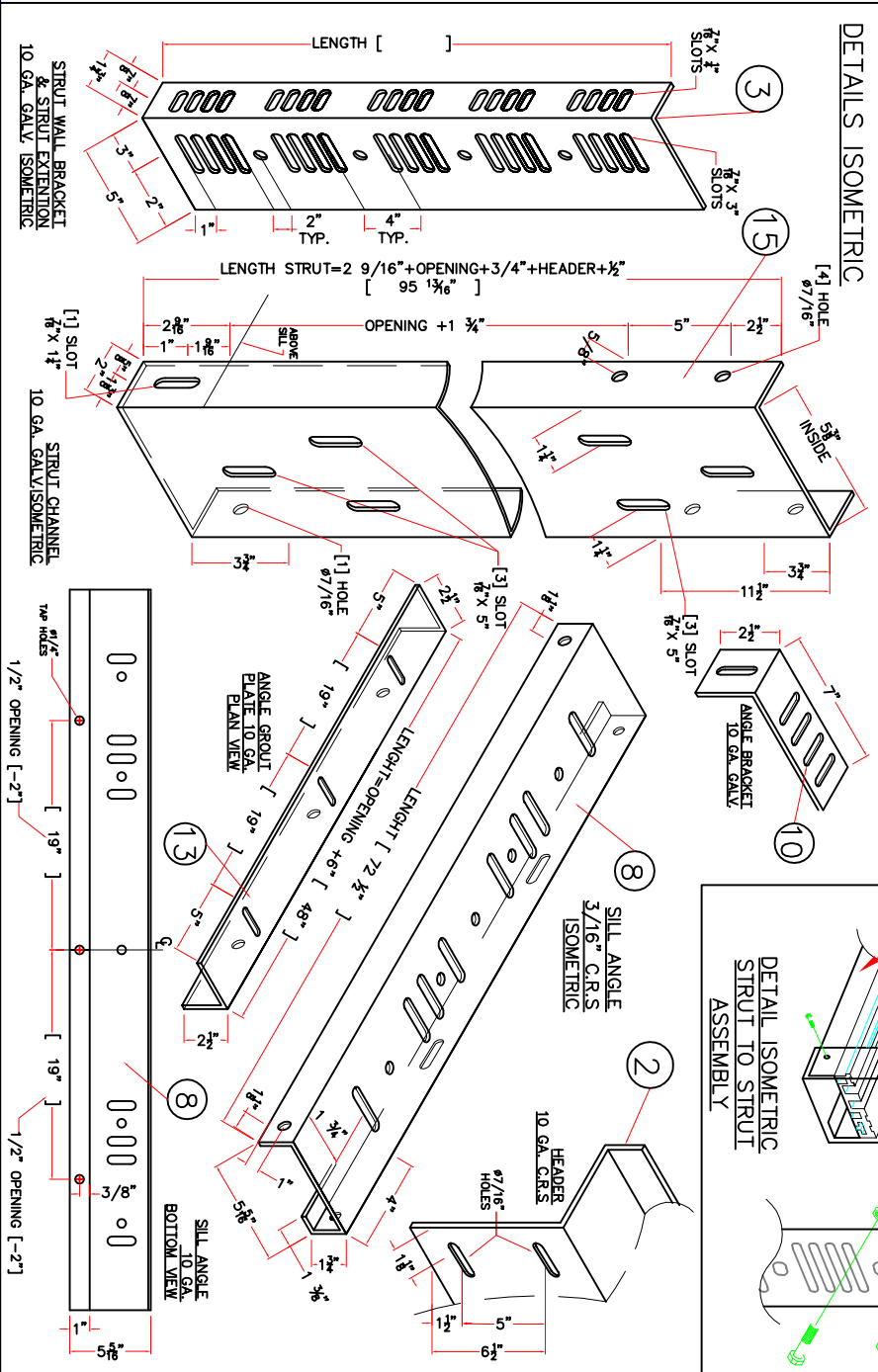
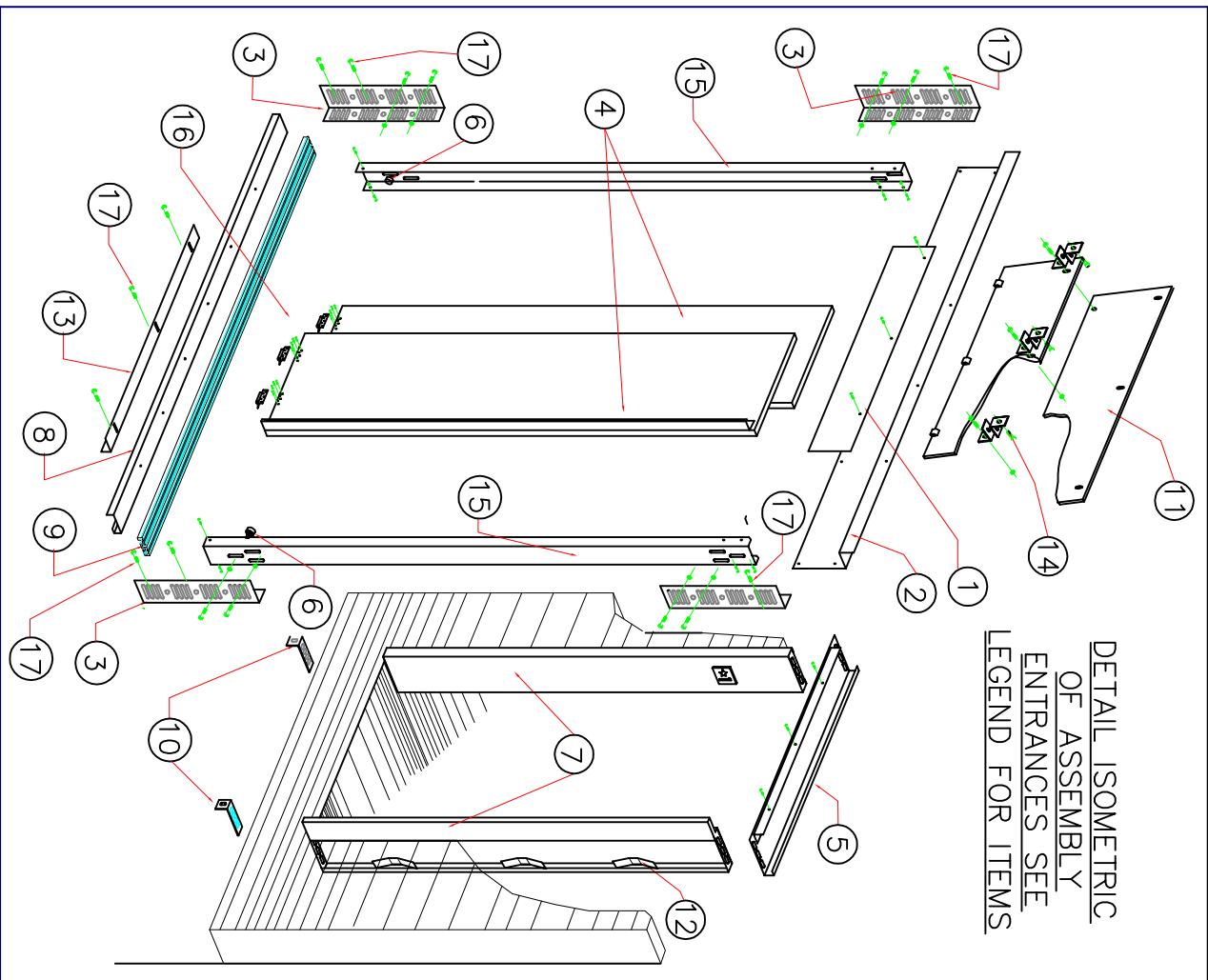


DETAIL PLAN VIEW
ENTRANCES

DETAIL SECTION VIEW
ENTRANCES

DETAIL ISOMETRIC
STRUT TO STRUT
ASSEMBLY

DETAIL ISOMETRIC
OF ASSEMBLY
ENTRANCES SEE
LEGEND FOR ITEMS



CUSTOMER:	
JOB:	
LOCATION:	
ARCHITECT:	SCALE: NONE
DRAWN BY: MARIANO	
JOB NO. [CUSTOMER NO.] P-ORDER NO. SHEET NO.	1 OF 1