

LULA WOOD CAB ASSEMBLY

COMPONENT LIST:

1-CEILING FRAME AND DIFFUSER PANEL	
2-REAR WALL PANEL	
3-SIDE WALL PANEL	
4- STRIKE JAMB	
5-RETURN JAMB	
6-HEADER SUPPORT	
7-TRANSOM	
8-LIGHT FIXTURE DOUBLE SIDE MOUNTING (LAMPS BY OTHER)	
9-STEADY PLATE ZEE	
10-LIGHT JUNCTION BOX	
11-RETURN BASE PLATE	
12-STRIKE END CAP	
13-HEADER ANGLE BRACKET	
14-HOISTING BRACKETS	
15-CANOPY MOUNTING ANGLES	
16-HANDRAILS W/ SPACER (OPTIONAL)	
17-BASE MOUNTING ANGLES W/VENTILATION SLOTS	
18-CANOPY	
19-SILL	
20-CAR DOOR	
21-STRIKE BUMPERS	

HARDWARE LIST

DESCRIPTION	ITEM	TYPE	FR	QTY.
-HEADER TO TRANSOM	6-7	A	FR	8
-CEILING TO WALL	18-2-3	A	FR	10
-FRONT TO SIDE	4-3	A	FR	18
-STRIKE TO SIDE	5-3	A	FR	18
-TRANSOM TO CEILING	7-18	A	FR	9
-TRANSOM TO RETURN	7-5	A	FR	6
-BASE TO FLOOR	17	A	FR	12
-STEADY TO CANOPY	9-18	A	FR	20
-FAN TO CEILING	13-18	A	FR	8
-WALL CORNER TO CORNER	2-3	A	FR	4
		B	FR	20

A 1/4 -20 LOCK F. x 3/4 M.S (80)
W/ NUTS

B 1/2 -20 L.F x 1 1/2 M.S (20)

C # 10 x 1 F.H. S.M (20)

GENERAL ASSEMBLY INSTRUCTIONS:

- 1-CHECK ALL GRATES & PACKING LIST FOR ITEMS BACK ORDERED, OR NOT SHIPPED, AND IMMEDIATELY REPORT ANY MISSING ITEMS OR CONCEALED DAMAGES.
- 2-ASSEMBLE AND TIE CANOPY TIGHT AGAINST CROSSHEAD.
- 3-SNAP CHALKLINE, 1" AT SIDES AND 3/4" REAR FROM PLATFORM EDGE, ASSUMING 3" DAYLITE.
- 4-MOVE REAR WALL PANEL ONTO PLATFORM, AND LEAN AGAINST REAR WALL OF HOISTWAY.
- 5-MOVE SIDE WALLS AND ASSEMBLE TO REAR WALL, BY USING 1/2 -20 BOLTS. SEE CORNER DETAIL.
- 6-MOVE RETURN PANEL AND STRIKE JAMB TO PROPER SIDE WALL EDGE AND ASSEMBLE W/ 1/2 -20 BOLTS.
- 7-SLIDE CAB FORWARD AND LINE UP THE OUTSIDE OF THE BASE ANGLE WITH THE CHALKLINE.
- 8-SQUARE CAB WITH FRAMING SQUARE AND INSTALL TRANSOM.
- 9-DOUBLE CHECK CAB POSITION BY CHECKING THE JAMB AND SILL ALIGNMENTS.
- 10-AFTER CAB IS SQUARED AND PROPERLY ALIGNED, SECURE CAB TO PLATFORM.
- 11-LOWER CANOPY ASSEMBLY ONTO POSITION, AND SECURE TO CANOPY MOUNTING BRACKET WITH 1/2 -20 BOLTS. SEE CANOPY TO CAB CONNECTION, INSTALL CEILING MATERIAL.
- 12-ASSEMBLE STEADY BRACKET TO CANOPY W/ 1/2 -20 BOLTS.
- 13-PRIOR TO HANGING CAR DOOR CHECK FOR BENDS AND/OR TWISTS, IF EITHER IS FOUND CONTACT OFFICE FOR INSTRUCTIONS.
- 14-MOUNT OPERATOR.
- 15-ANY PROBLEMS OR QUESTION, PLEASE DIAL TOLL FREE 1 - 866 - 506 - 8955.

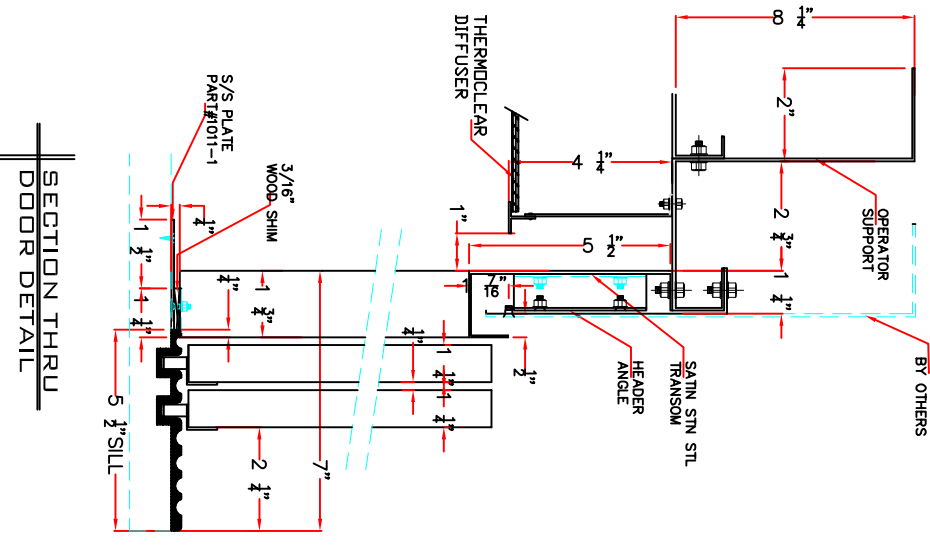
KOHLER ELEVATOR INDUSTRIES

415B NW 132 Street, OPA-LOCK, Florida 33064
PHONE (305)667-7097 • Fax (305)668-0106
INFO@KOHLER.COM • WWW.KOHLER.COM

EXPLODED VIEW OF LULA CAB

DO NOT SCALE DRAWING

DRAWING #: **6046**



SECTION THRU DOOR DETAIL