

COMPONENT LIST:

1-CEILING FRAME AND DIFFUSER PANEL				
2-PANELS				
3-TOP CHANNEL				
4-RETURN JAMB				
5-SWING RETURN				
6-HEADER				
6A-HEADER SUPPORT				
7-TRANSOM				
8-LIGHT FIXTURE DOUBLE SIDE MOUNTING				
9-STEADY BRACKET ASSEMBLY				
10-LIGHT JUNCTION BOX				
11-WING NUTS PREVENT TOPEXIT FROM BEING OPENED FROM WITHIN THE CAR				
12-EXIT				
13-FAN (OPTIONAL)				
14-HOISTING BRACKETS				
15-VERTICAL CHANNELS				
16-HANDRAILS W/ SPACER (OPTIONAL)				
17-CANOPY				
18-CAR DOORS				
20-HORIZONTAL CHANNELS				
21-7" BASE CHANNEL				
22-WIRING TROUGH				
23-OPERATOR SUPPORT				
24-HAEDER BRACKETS				
25-VELCRO				

HARDWARE LIST

DESCRIPTION	ITEM	TYPE	FR	QTY.
HEADER TO TRANSOM	6-7	A	8	4
CEILING TO WALL	17-2-3	A	10	16
FRONT TO SIDE	4-3	A	18	9
STRIKE TO SIDE	5-3	A	18	9
TRANSOM TO CEILING	7-18	A	12	6
TRANSOM TO RETURN	7-5	A	18	6
SHELL TO FLOOR	3 / 15	B	20	20
FAN TO CANOPY	9-17	A	13	17
WALL TO CEILING	13-17	A	4	4
WALL CORNER TO CORNER	3-15	A	4	4
				20

A 1/2" -20 LOCK F. x 3/4" M.S (120)
W/ NUTS

B # 10 x 1 F.H. S.M (20)

GENERAL ASSEMBLY

INSTRUCTIONS:

- CHECK ALL GRATES & PACKING LIST FOR ITEMS BACK ORDERED, OR NOT SHIPPED, AND IMMEDIATELY REPORT ANY MISSING ITEMS OR CONCEALED DAMAGES.
- ASSEMBLE AND TIGHTEN CANOPY AGAINST CROSSHEAD.
- SNAP CHALKLINE 1 3/8" AT SIDES & 1 3/8" @ REAR FROM PLATFORM EDGE. ASSUMING 3" DAYLITE.
- MOVE REAR WALL PANEL ONTO PLATFORM. AND LEAN AGAINST REAR WALL OF HOISTWAY.
- MOVE SIDE WALLS AND ASSEMBLE TO REAR WALL BY USING 1/2" -20 BOLTS. SEE CORNER DETAIL.
- MOVE RETURN PANEL AND STRIKE JAMB TO PROPER SIDE WALL EDGE AND ASSEMBLE W/ 1/2" -20 BOLTS.
- SLIDE CAB FORWARD AND LINE UP THE OUTSIDE OF THE SHELLS WITH THE CHALKLINE.
- SQUARE CAB WITH FRAMING SQUARE AND INSTALL TRANSOM.
- DOUBLE CHECK CAB POSITION BY CHECKING THE JAMB AND SILL ALIGNMENTS.
- AFTER CAB IS SQUARED AND PROPERLY ALIGNED, SECURE CAB TO PLATFORM.
- LOWER CANOPY ASSEMBLY ONTO POSITION AND SECURE TO CANOPY MOUNTING BRACKET WITH 1/2" -20 BOLTS. SEE CANOPY TO CAB CONNECTION. INSTALL CEILING MATERIAL.
- ASSEMBLE STEADY BRACKETS AS SHOWN IN DETAIL. PLACE RUBBER BUMPERS TIGHT AGAINST STILES AND SECURE TO CANOPY W/ 1/2" -20 BOLTS.
- PRIOR TO HANGING CAR DOOR CHECK FOR BENDS AND/OR TWISTS. IF EITHER IS FOUND CONTACT KOHTLER FOR INSTRUCTIONS.
- MONITOR OPERATOR.
- ANY PROBLEMS OR QUESTION, PLEASE DIAL TOLL FREE 1 - 886 - 506 - 8955.

KOHTLER
ELEVATOR INDUSTRIES

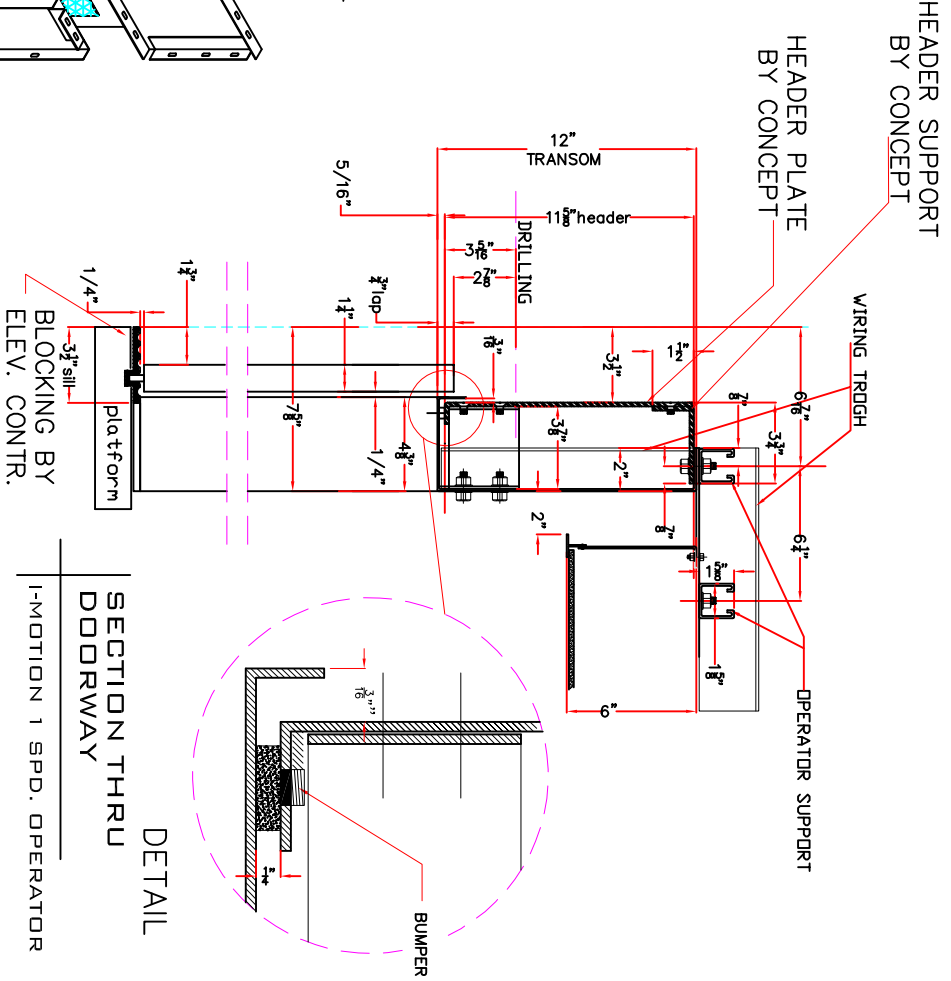
ATTN: Mr. Leo Simard, 091-1000, Florida, 33064
PHONE: (800)987-7057 • Fax: (800)988-0108
INFO@KOHTLER.COM • WWW.KOHTLER.COM

EXPLODED VIEW OF STEEL CAB WITH PANELS

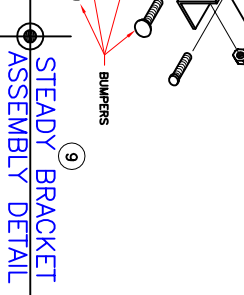
DO NOT SCALE DRAWING

BY: MARANO 08-29-08

DRAWING #: 6045



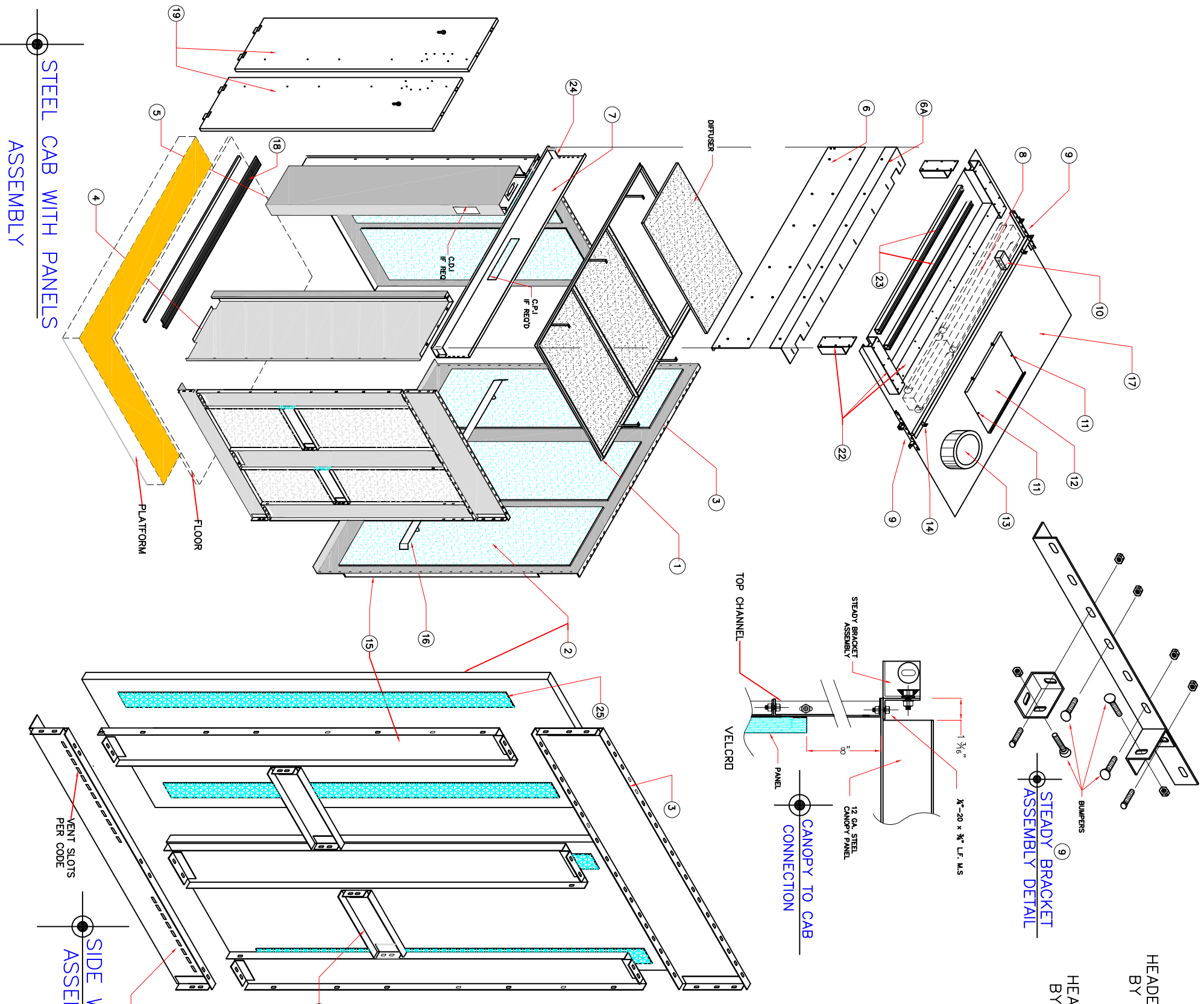
HEADER SUPPORT BY CONCEPT
HEADER PLATE BY CONCEPT



CANOPY TO CAB CONNECTION

BLOCKING BY ELEV. CONTR.

1-MOTION 1 SPD. OPERATOR



STEEL CAB WITH PANELS ASSEMBLY

SIDE WALL TYPE ASSEMBLY

BASE DETAIL