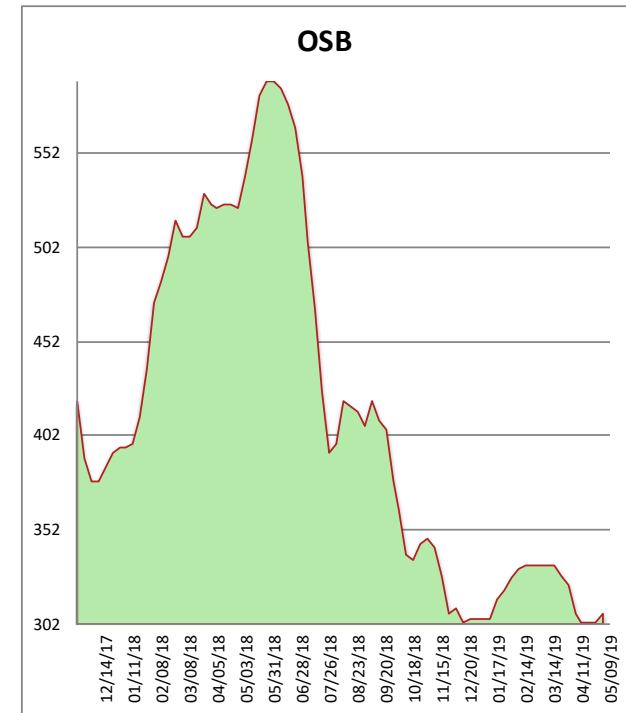
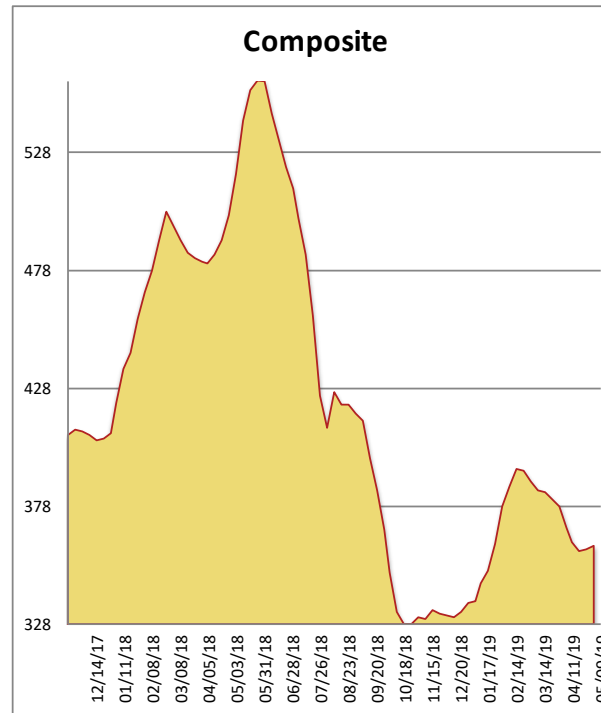


All items are priced as a general market guide. Please call our sales office for specific quotes in your respective market.

	This Week	Weekly Change	Last Year
2X4 104-5/8" STUD DF KD	355	10	560
2X6 104-5/8" STUD DF KD	400	10	560
2X4 #3 SYP (Westside)	375	-5	450
2X4 UTILITY SFP (Western)	280	0	440
2X6 #3 SYP (Western)	295	0	365
2X12 #2 SYP (Westside)	540	-5	520
2X4 #2 SYP (Westside)	390	-10	570
4X8 15/32 OSB (Southwest)	215	5	430
4X8 23/32 OSB T&G (Southwest)	400	5	615
Composite Average	361	01	501

Prices are F.O.B. mill, excluding freight



Lumber markets were a mixed bag this week. While SYP dimension remains weak with wet weather impacting Texas, other species firmed up. Talk of more mill curtailments were common from both mill and secondary traders. OSB saw upward price movement last week in western markets in particular, and the momentum, while largely secondary driven, continued this week as prices rose again. Watching closely this weekend to see whether the Nuggets or the Blazers earn the honor of sacrificial lamb for Golden State starting next week.