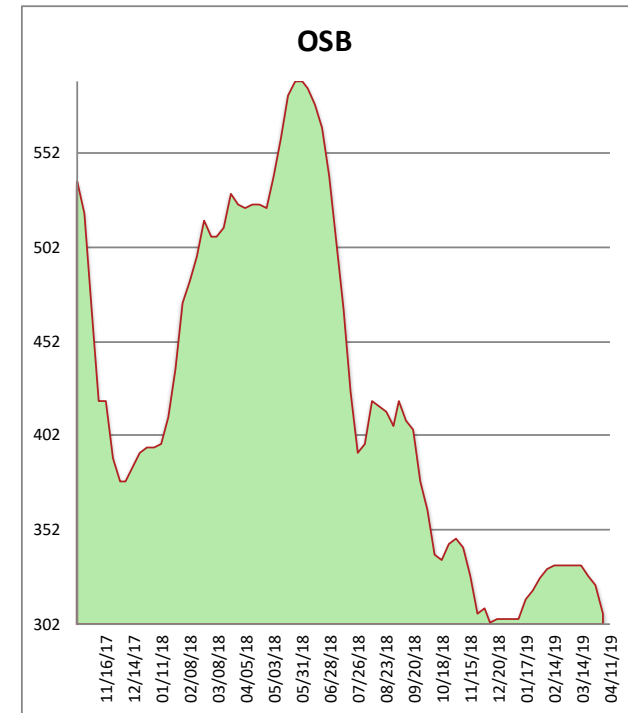
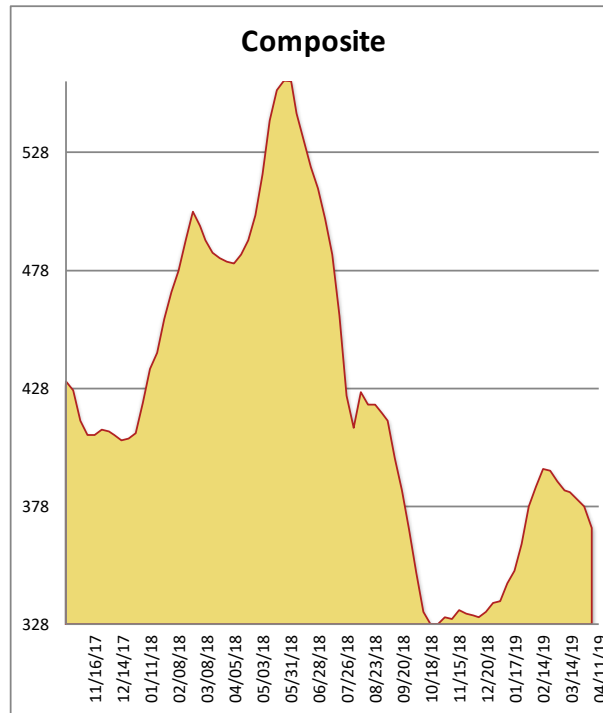


All items are priced as a general market guide. Please call our sales office for specific quotes in your respective market.

	This Week	Weekly Change	Last Year
2X4 104-5/8" STUD DF KD	360	-5	480
2X6 104-5/8" STUD DF KD	410	0	570
2X4 #3 SYP (Westside)	390	0	435
2X4 UTILITY SFP (Western)	300	-20	395
2X6 #3 SYP (Western)	295	0	345
2X12 #2 SYP (Westside)	550	-20	492
2X4 #2 SYP (Westside)	400	-5	565
4X8 15/32 OSB (Southwest)	215	-10	430
4X8 23/32 OSB T&G (Southwest)	400	-20	620
Composite Average	369	-09	481

Prices are F.O.B. mill, excluding freight



Cracks widened almost across the board (pun intended) as the spring market rally that many have anticipated failed once again to appear. Punxsutawney Phil (Mickelson) did not see his shadow in Augusta this week, which means market price gains are eminent. Seriously, the levels that wood products are currently trading at are at a significant discount to those of a year ago. Now is a good time to lock in your lumber and panel needs for summer.