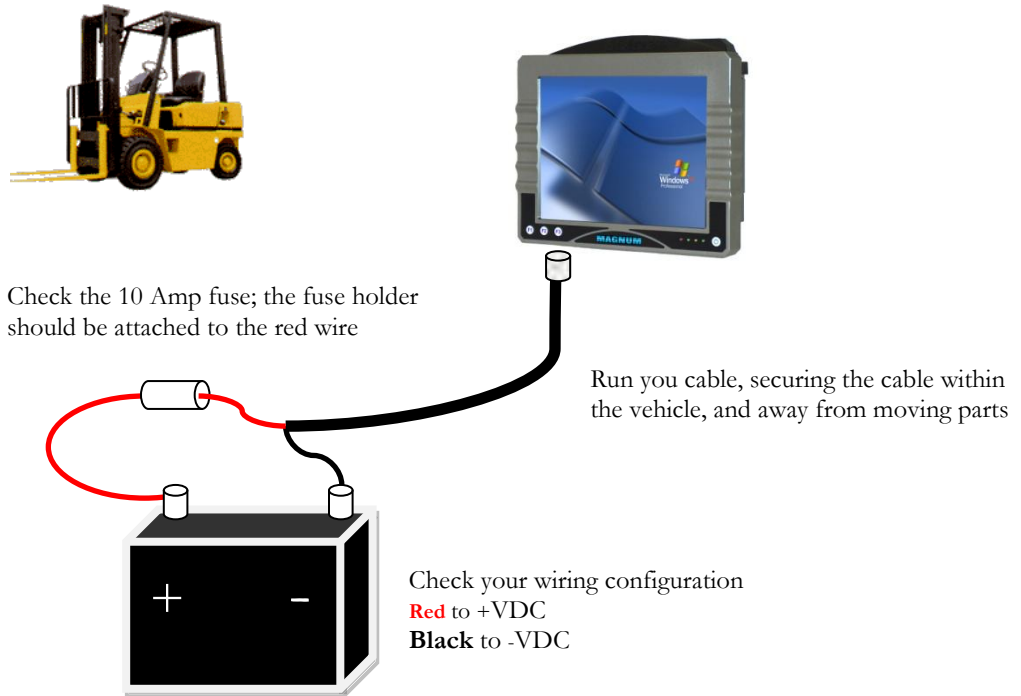


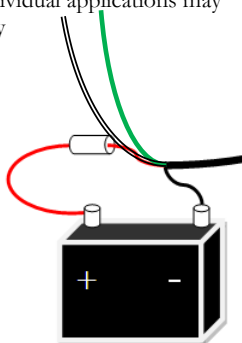
## Wiring Diagram

### Everest mobile mount



In the 4-wire application the white and green wires are connected across the accelerator relay or a similar voltage source that switches based on vehicle motion

Individual applications may vary



1. The computer is powered down and the rocker switch is in the off position.
2. Check the condition of the cable before you run it, and confirm there is a good 10amp fuse(s) in the fuse-holder(s). Connect the power cable to your computer.
3. Run the cable, keeping it away from moving parts, or intense heat.
4. Connect the fused **RED** lead to the positive terminal of your battery.
5. Connect the **Black** lead the negative terminal of your battery.
6. If you have a 4-wire cable and are not using 'Screen-Blanking' disregard the white and green wires.
7. Test the system; turn on the power and Boot your computer.
8. Power down the computer, and then secure your cable. **DO NOT** operate the vehicle without first securing the cable.

**NOTE: Maximum power is 78 watts**

*Failing to use approved power components and mounts can void your warranty  
 Contact your Glacier representative for information on these and other accessories*