

the **PARENT'S** supervised driving program

For the **parents of teen drivers**
— a **requirement** for teen licensing



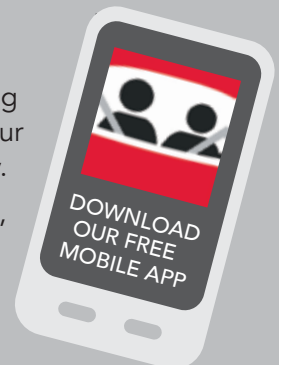
A PROGRAM OF THE COLORADO
DIVISION OF MOTOR VEHICLES



RoadReady®

Log your
practice driving
and export your
driving history.

Easy, accurate,
educational.



#RoadReady



WITH SUPPORT FROM



Improving parents' and
teen drivers' experience
behind the wheel



From first steps to first car.

You've been there to protect them every step of the way.
State Farm® can help with the road ahead.
Visit teendriving.statefarm.com today.



A message to parents and guardians



The Colorado Department of Revenue's Division of Motor Vehicles is pleased to continue as a full partner with multiple state agencies, the Colorado Teen Driving Alliance and Safe Roads Alliance, and sponsor at State Farm® in offering Colorado's parents and guardians *The Parents Supervised Driving Program* guide. Since 2013 we have received favorable feedback from parents and guardians who have used the guide to assist their teens develop the habits and skills necessary to be safe and responsible drivers. I hope you find the same thing true for you.

Safe roads begin with safe drivers. The Division of Motor Vehicles is committed to ensuring all individuals seeking driving privileges have satisfactorily met the standards for the issuance of a permit or driver license.

For our younger drivers, the requirements of the Graduated Driver License (GDL) law ensure our highest at risk drivers are given additional training before granting them unrestricted driving privileges. It is important we provide the resources necessary to educate parents and guardians about this law and its requirements.

Parents and guardians are essential to the success of the GDL law and ultimately in training teen drivers. Two important resources include this guide and an online parent course. Both have been developed as resources to successfully navigate through the GDL law and help ensure teens obtain the training essential to becoming a good driver. The guide can also be found online at the DMV website at www.Colorado.gov/DMV/Minor-Permit. The online course can be found at www.COTeenDriver.com.

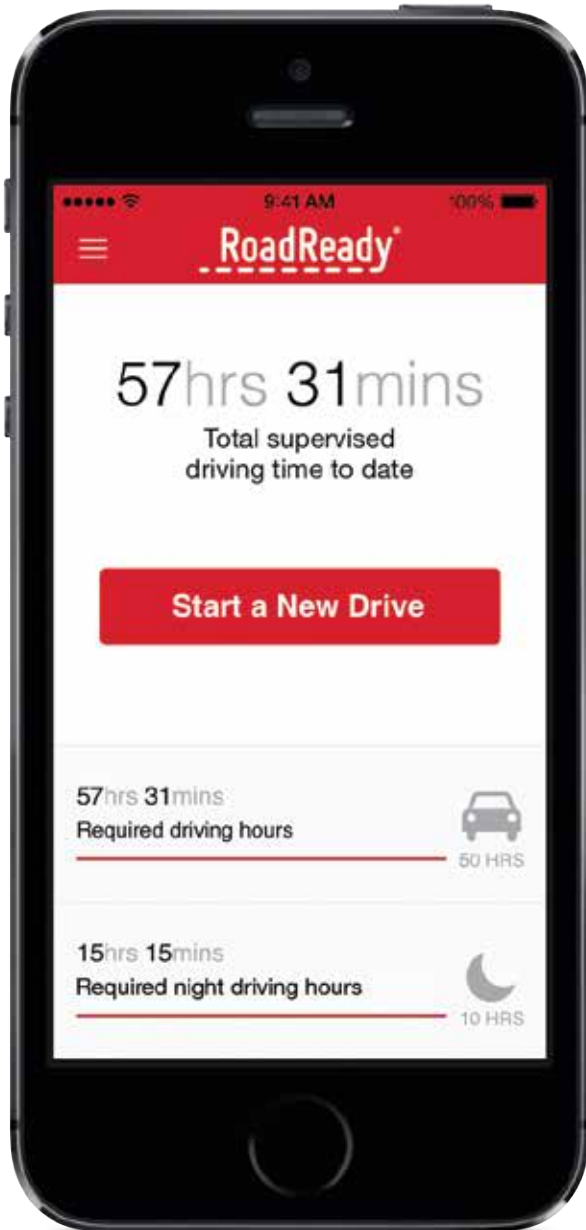
The most important ingredient in a teen becoming the best driver possible is a parent or guardian. Colorado Teen Driving Alliance has reported teens who say their parents set rules and monitor their driving behavior in a supportive way are 50 percent less likely to crash and 70 percent less likely to drive intoxicated. The old saying "practice makes perfect" is applicable to driving. The more time spent with your teen on the road is invaluable to their safety and confidence.

You can make a difference. I hope you find this guide and supporting online program a valuable resource to help in preparing your teen to become the driver you want them to be.

Mike Dixon
Senior Director, Colorado Division of Motor Vehicles



LOG YOUR DRIVES.
FOCUS ON YOUR TEEN.



Teaching your teen to drive presents enough challenges. With RoadReady, your focus can remain where it needs to be: on your teen and on the road. "Start a New Drive" and RoadReady will log the rest. Download your log to verify you've completed your state requirement.

With Support From



A component of
the **PARENT'S**
supervised driving program



Sponsor message

Do you remember that feeling of freedom and sense of accomplishment when you got your driver's license? State Farm, the nation's largest auto insurer¹ chose to be a part of *The Parent's Supervised Driving Program* to help parents help their teens celebrate this accomplishment and responsibly guide a new generation of drivers to become safer, confident and more experienced every time they are behind the wheel.

State Farm understands motor vehicle injuries are one of the nation's most important public health problems. In fact, car crashes are the #1 killer of teens² and, the first 6 months of unsupervised driving is the most dangerous.³ State Farm has been an integral part of landmark teen driver research since 2006. This research has helped us and others understand many car crashes can be avoided. It also indicates new drivers need and want parental involvement. Parents can help make the roads safer for everyone by providing teen drivers significant practice with a variety of driving skills and in different conditions.

Across the US, more than 18,000 State Farm agents play a critical role in communities, helping to increase awareness around safe driving and the impact new drivers have on the roads. They are a large part of **Celebrate My Drive®**, the State Farm Signature Program encouraging teens to commit to **Drive 2N2®, two eyes on the road and two hands on the wheel.**

State Farm has a continued commitment to funding research that helps prevent injuries and save lives. We work with national and local organizations to bring ongoing attention to auto safety issues and legislation that helps to make driving and roads safer for everyone.

We encourage you to read this Program guide and know that you will make a difference in your teen's safety. We know you will help them as they continue their journey and enjoy the excitement of the road wherever it takes them. Together, we can make a significant contribution to get them there safely.

1 – <https://www.statefarm.com/about-us/company-overview/company-profile/fast-facts>

2 – http://www.cdc.gov/injury/wisqars/images/LCD/10LCID_Unintentional_Deaths_2010-a.gif

3 – Mayhew DR, Simpson HM, Pak A. Changes in Collision Rates Among Novice Drivers During the First Months of Driving. Accident Analysis and Prevention. September 2003. – See more at: http://www.teendriversource.org/stats/for_parents/detail/57#sthash.H3G7UafL.dpuf

The parent's supervised driving program

Developed by Safe Roads Alliance, a non-profit dedicated to promoting safer driving through education for drivers of all ages, *The Parent's Supervised Driving Program* is designed to improve teen driver safety by providing parents and guardians with a methodical approach to teaching the requisite driving skills. Each lesson concentrates on a particular sequential skill. Parents are in the best position to help their teens to become safe, smart, and skilled drivers.

This program is available in PDF format. *The Parent's Supervised Driving Program* also includes a website, social media pages, and a mobile app, RoadReady®.

Website: www.theparentssuperviseddrivingprogram.com

Facebook: www.facebook.com/TheParentsSupervisedDrivingProgram

Twitter: www.twitter.com/PSDP_Info

Instagram: www.instagram.com/roadreadyapp#

Pinterest: www.pinterest.com/roadreadyapp/

Publisher: Jeff Larason – jeff@saferoadsalliance.org

Special thanks to the Colorado Division of Motor Vehicles, the Colorado Teen Driver Alliance and Carol Olds.

Published in association with the Colorado Division of Motor Vehicles and with support from State Farm®.

Copyright © 2013 Travelers Marketing LLC and Safe Roads Alliance. All rights reserved.

Printed in the United States of America.

Produced by J.F. Griffin Publishing.

First published in 2013. This revised third edition published in 2015.

the **PARENT'S** supervised driving program

For the **parents of teen drivers**
— a **requirement** for teen licensing



Your opinion matters

Take our program survey and tell us about your experience.
www.theparentssuperviseddrivingprogram.com/survey

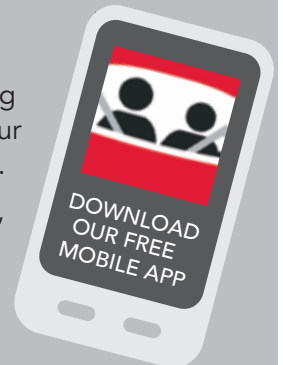
A PROGRAM OF THE COLORADO
DIVISION OF MOTOR VEHICLES



RoadReady®

Log your
practice driving
and export your
driving history.

Easy, accurate,
educational.



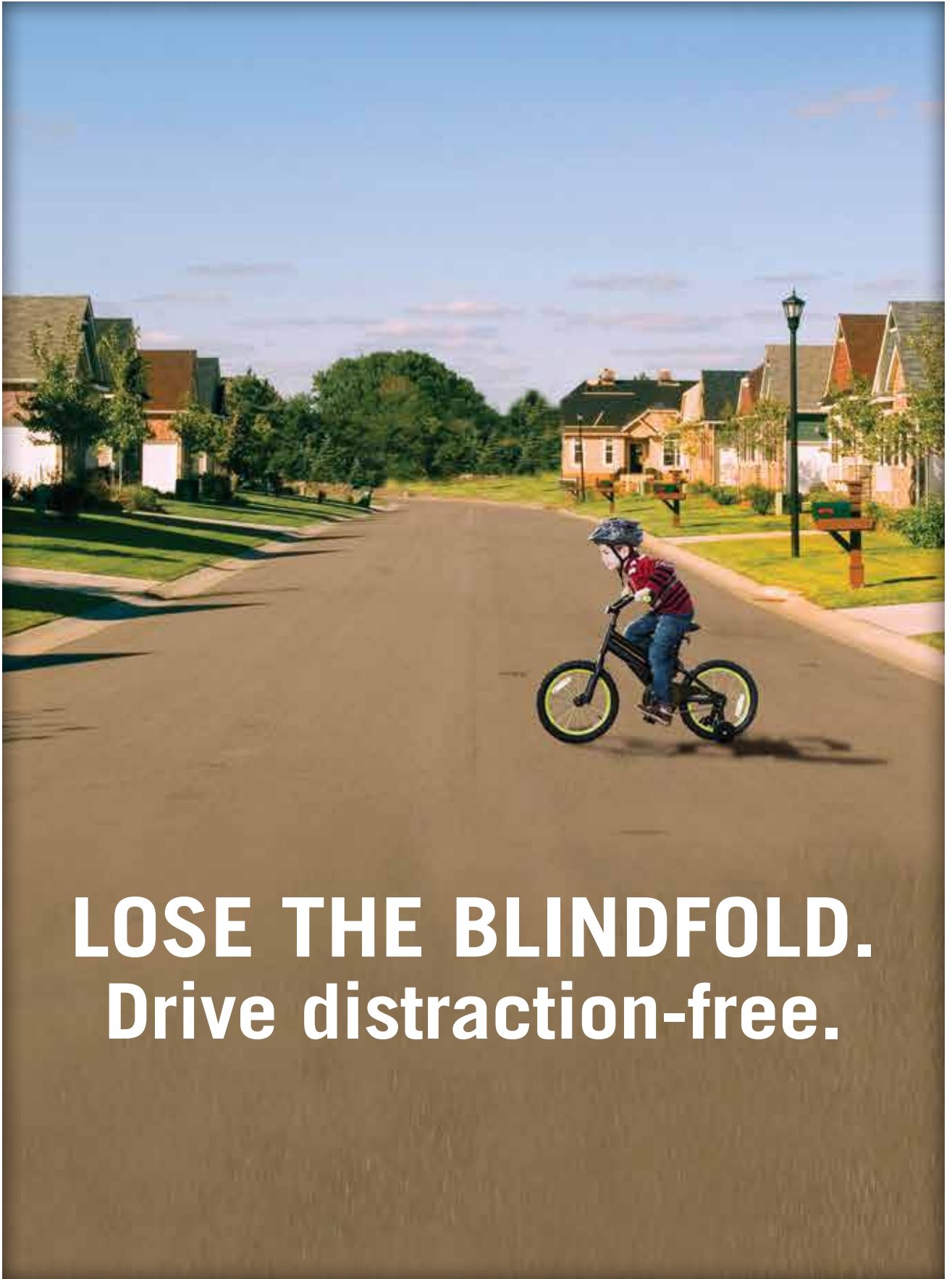
#RoadReady



WITH SUPPORT FROM



Improving parents' and
teen drivers' experience
behind the wheel



**LOSE THE BLINDFOLD.
Drive distraction-free.**

Table of contents

Notes for parents/guardians

About supervising teen drivers	1
Vehicle control for supervisors	2
Distracted driving and more	3

Skills

Skill one: before you start the engine	4
Skill two: moving, steering and stopping	5
Skill three: how close are you?	6
Skill four: backing up	7
Skill five: driving on a quiet street – part one	8
Skill five: driving on a quiet street – part two	9
Skill six: looking ahead	10
Skill seven: turning around	11
What is GDL?	12
Supervised driving log	13
Parent/teen driving contract	23
Skill eight: parking – part one	25
Skill eight: parking – part two	26
Skill nine: multi-lane roads – part one	27
Skill nine: multi-lane roads – part two	28
Skill ten: city driving – part one	29
Skill ten: city driving – part two	30
Skill eleven: highway driving – part one	31
Skill eleven: highway driving – part two	32
Skill twelve: roundabouts	33

Beyond the basics

Adapting to new landscapes	34
Continuing education	35
Practice in other conditions	36
Teens' biggest dangers	37
Sharing the road	38

About supervising teen drivers

The Parent's Supervised Driving Program gives you a simple, easy-to-follow plan you can use to help your teen be a safe and responsible driver during the required 50 hours of supervised driving time and beyond.

Some thoughts as you begin this exciting experience together:

Make an effort to enjoy the learning process: Driving is a big step toward independence, and your teen is entering a new phase of life. You'll both remember this experience for years to come. Make it a good memory!

Practice makes perfect: Studies show that the risk of a crash diminishes with experience. The more time you can spend driving with your teen, the less likely it is they'll crash when they begin driving alone. Driving in a variety of circumstances is equally important. While using this program, you should drive on all types of roads. Make sure your teen gets exposure to a variety of roadways, and in different conditions as well: at night; in rain, fog, and snow; and in heavy and light traffic.

Be a driving role model: It's not enough to say, "Do as I say." Children imitate their parents'/guardians' behavior, so your driving should set a good example for your teen to emulate. Be sure that you:

- Obey all traffic laws.
- Correct any unsafe driving habits (driving aggressively, rolling through stop signs, accelerating through yellow lights, speeding, etc.).
- Refrain from using your cell phone or texting while driving.

Tips for teaching your teen

- **Seat belts** must always be worn properly by everyone in the vehicle.
- **Before each session**, discuss the goals of the day's lesson.
- **Before each new lesson**, review what was learned during the previous lesson.
- **Keep instructions simple and concise.** Say where to go and what action to take. For example: "Drive to the corner and turn right."
- **The feedback** you give should be calm, precise, and immediate. Be patient and alert at all times. Remember to give positive feedback when your teen succeeds!
- **When your teen makes a mistake**, which will happen often, do not criticize. Remain calm and simply repeat the maneuver until it's done correctly. To minimize their frustration, emphasize to your teen that mistakes are a normal part of learning.
- **These lessons should be consistent** with what is taught by your teen's driving instructor. If you teach something differently, your teen will be confused and learning will be more difficult. If the lessons in this program are different from the instructor's, contact them to clarify the discrepancy.
- **Remember that students learn at different paces.** Make sure your teen has mastered each skill before you move on to the next lesson, even if that means repeating a lesson several times. Patience and practice will pay off in the long run.
- **Integrate night driving** into as many lessons as possible. Ten of the 50 required supervised driving hours must be completed at night.

Most importantly, make sure the vehicle you use for training is safe. Confirm that the brakes have been recently inspected, and check to make sure the tires have sufficient tread depth.

Stay focused

At the start of each driving lesson with your teen, leave your problems behind — and make an effort to stay focused. Don't bring up touchy subjects such as grades, homework, boyfriends/girlfriends, and anything else that might distract either of you from the task at hand.

Vehicle control for supervisors

Teaching a new driver can be stressful, but knowing you have some control can help. Professional driver's education instructors are taught emergency responses to potential hazards that can crop up with an inexperienced driver behind the wheel. Here are some skills you can learn to help you maintain control from the passenger seat while teaching:



Emergency shifting: In a quiet, large, level, empty area, practice shifting the transmission from drive to neutral.



Taking the wheel: With an experienced driver in the driver's seat, in a quiet, large, level, empty area, practice steering the car with your left hand from the passenger seat.



Mirrors: Adjust the mirror on the passenger sun visor so you can use it as a rearview mirror. If the right side mirror is properly adjusted, you can use it to monitor traffic to the rear from the passenger seat.



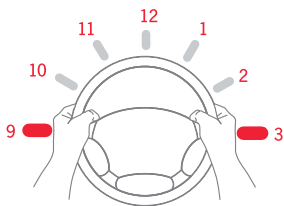
Awareness: Never assume everything is okay. Always check and re-check mirrors before you give instructions to your teen.

Driving has changed

Chances are, today's cars are not the same as they were when you learned to drive. To teach your teen effectively, you need to know about a few important recent changes in how cars work, how we drive, and how driving is taught.

Anti-lock Brake System (ABS): Most newer cars offer ABS as either standard or optional equipment. ABS is a dramatic safety improvement that works by letting the tires rotate, rather than lock up, when the brake is engaged. This allows drivers to turn the car in an emergency stop. ABS should be used with firm, continuous pressure. The brakes may shake and grind when applied, which often concerns users – but this is a normal function of ABS. To find out if your car has ABS, check the instrument panel after you turn on the ignition or read the owner's manual.

Note: When driving a car without ABS, the old rules still apply. Don't "slam" the brakes. Rather, press the brake pedal firmly. The intention is to stop quickly, but also to avoid locking the brakes and skidding. Skidding causes a loss of control and requires more distance to stop.



Arms holding the wheel at 9 and 3 o'clock are not as likely to be hit by the air bag.

Air bags: Air bags are designed to work with seat belts, which must be worn for the air bags to be effective. Since air bags deploy out of the wheel on impact, it's important to keep your hands and arms clear.

Steering wheel hand position: Most of us were taught to position our hands at 10 and 2 o'clock on the steering wheel. It's now suggested that you hold the wheel at 9 and 3 or 8 and 4 o'clock. This gives you better vehicle control.

Commentary driving

Commentary driving is a great communication tool. Coach your teen to describe their actions, thoughts and observations out loud as they drive, similar to a sports commentator. Throughout the learning process, ask them to verbalize what they see around them, including potential risks and any steps they need to take to avoid those risks.

Distracted driving and more

Distracted driving involves any activity, such as cell phone use, that has the potential to distract someone from the task of driving. Distracted driving, alcohol, speeding, and not wearing seat belts can lead to death and injury in crashes. Teens, who are still learning the complex skills of driving, are particularly susceptible to distractions while behind the wheel. Don't let you or your teen become another statistic. Here are the facts:

- Motor vehicle crashes are the leading cause of death for U.S. teens. Mile for mile, teens are involved in 3 times as many fatal crashes as all other drivers. And 1 in 3 teens who text say they have done so while driving.
- In 2013, 3,154 people were killed and an estimated 421,000 people were injured in crashes involving a distracted driver. That's a nine percent increase from the estimated 387,000 injured in 2011.
- A Virginia Tech Transportation Institute study revealed that physically dialing a phone while driving increases the risk of a crash as much as 6 times. Texting is riskier still, increasing collision risk by 23 times.

To combat this growing epidemic, we suggest the following:

- **Know the law:** It is illegal in Colorado for teen drivers under age 18 to talk or text on a wireless phone while driving. And for everyone 18 and older, texting while driving is strictly prohibited.
- **Set a good example:** Kids observe and learn from their parents. Put your phone down while driving and only use it when you are safely pulled over. According to the Pew Research Center, 40 percent of teens 12 to 17 say they have been in a car when the driver used a cell phone in a way that put themselves and others in danger.
- **Talk to your teen:** Discuss the risks and responsibilities of driving and the danger of dividing their attention between a phone call and the road. Show them the statistics related to distracted driving and urge them to share what they learn with their friends. Make them aware of other consequences like an expensive ticket and points against their license that could put them at risk of losing their freedom to drive.
- **Establish ground rules:** Set up family rules about not texting while behind the wheel. Enforce the limits set by the graduated licensing program.
- **Sign a pledge:** Have your teen take action by agreeing to a family contract about wearing safety belts, not speeding, not driving after drinking, and not using a cell phone behind the wheel. Agree on penalties for violating the pledge, including paying for tickets or loss of driving privileges. You can find a sample contract in the center of this guide.
- **Other dangerous distractions:** In addition to cell phone use, distracted driving can include eating, grooming, drinking, listening to or adjusting the radio or MP3 player, using the GPS, talking to passengers, or watching a video, just to name a few activities. Inexperienced drivers are particularly susceptible to these kinds of distractions.

Eyes on the road

Teens tend to look away from the road and become distracted for longer periods than older drivers. It's important to train them to keep their eyes on the road ahead. Test your teen on how long they look away when doing various tasks inside the vehicle, such as tuning the radio. Coach them repeatedly on the importance of focusing on the road ahead.

Before you start the engine

Goal: Teach your teen vehicle basics before actual driving begins.

Location: Parked. This is a non-driving lesson.

Lesson one – touring the vehicle

Walk around the outside of the car with your teen. Instruct them to look for leaks and hazards such as broken glass, and to make sure it's clear behind the vehicle as well as in front of the vehicle.

Have your teen practice these basic skills until they don't need help:

- Starting and stopping the engine
- Naming and operating all dashboard controls
- Checking oil level
- Checking wiper fluid
- Checking tire pressure

Lesson two – mirror settings

The method below provides the best view of adjacent lanes, for maximum safety.

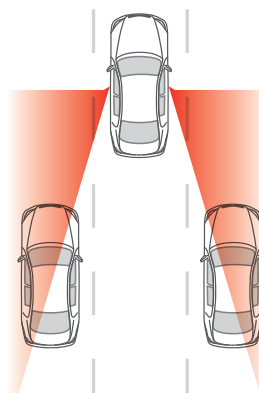
- **Inside mirror:** Have your teen sit up straight in the driver's seat and adjust the inside mirror so that it frames the entire rear window. This is the main mirror for viewing what is behind the vehicle.
- **Left-side mirror:** Have your teen lean their head toward the left-side window, and set the left mirror so they can barely see the side of the car. When they sit up straight, the car should no longer be visible in the mirror.
- **Right-side mirror:** Do the same to the right. Have your teen lean to the right over the car's center console, and set the right mirror so they can barely see the right side of the car.

Lesson three – checking blind spots

Additionally, teach your teen how to look over their shoulder to check the "blind spot" on each side of the car that cannot be seen in the mirrors.

Lesson four – seating position

The proper seat position is important to safely control the vehicle. Your teen should sit with their back firmly against the seat. There should be at least 10 inches between the steering wheel and the driver's chest, with the air bag pointing at the chest. The top of the steering wheel should be no higher than the shoulders. Move the seat forward or backward so that the driver's heel touches the floor and can pivot between the brake and accelerator. Shorter drivers may need a seat cushion or pedal extenders to sit safely 10 inches from the air bag. The head restraint should be at the center of the driver's head.



The most effective way to deal with blind spots is to briefly turn and look.

Proper mirror setting

In the past, drivers were often taught mirror settings that caused overlap between the rear and side mirrors, which was less safe. This is a great opportunity to update your own driving skills while teaching your teen!

Skill completed

supervisor initials

driver initials

#RoadReady

Moving, steering, and stopping

Goal: Teach your teen to consistently start, stop, and turn smoothly with full vehicle control.

Location: A large, level, mostly empty area.

Everyone in the vehicle **must** be properly buckled up.

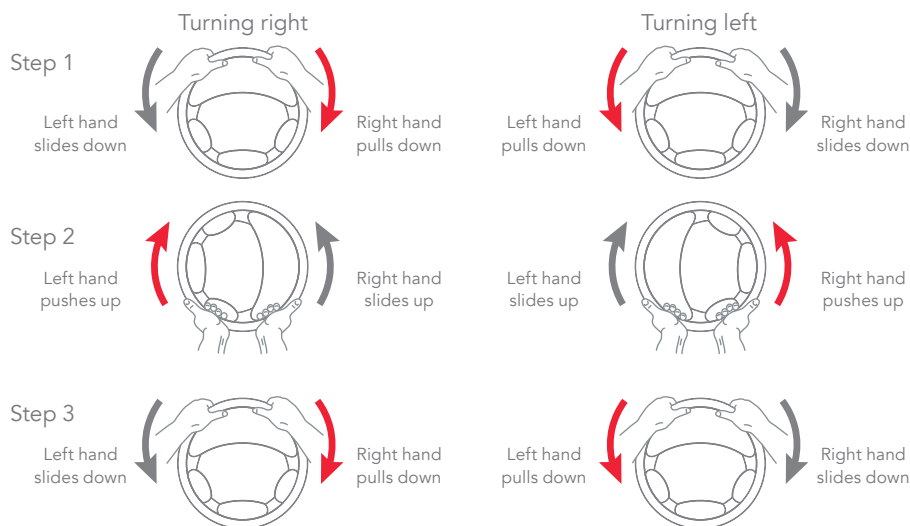
Before starting, coach your teen to always signal and check mirrors and blind spots before changing the speed, position, or direction of the car. Remind them when needed.

Have your teen drive around the perimeter of the lot several times at a slow speed. Have them stop and start frequently, practicing smooth hand-to-hand steering, braking, and accelerating.

Pick several targets in the large, level, empty practice area, and have your teen drive to them at specific speeds. For example, "Drive to the stop sign at 15 mph." Focus on steady speed and smooth starts and stops.

Once your teen is braking smoothly, practice "hard, smooth stops" at slightly higher speeds (approximately 25–30 mph). *Hint: Curling toes back just before braking results in smoother stops. It eases the pressure on the brake.*

Lesson one – steps toward turning



With hand-to-hand steering your hands do not cross each other.

Lesson two – turning techniques

- Ease off the accelerator or use the brake to reduce speed before entering a curve; use gentle acceleration to overcome inertia and pull the vehicle out of the curve.
- Use smooth, continuous steering wheel movements when approaching a turn and when returning (sliding) the wheel through the hands until the vehicle is in the proper post-turn position.
- Coach your teen to pick a target near the center of the intended travel path. This target can be used as a visual aid to aim at while steering through turns.

Reducing speed

New drivers tend to use the brake too much and the accelerator too little to control speed. Coach your teen about easing up on the gas pedal as a way to reduce the car's speed.

Skill completed

supervisor initials

driver initials

#RoadReady

How close are you?

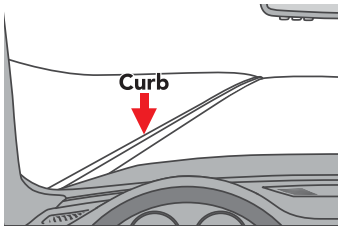
Goal: Teach your teen how to tell where their vehicle is in relation to other vehicles or objects.

Location: A large, level, mostly empty area with clearly painted pavement lines and curbs.

Reference points

Explain to your teen that reference points are visual guides to help them judge the car's distance from curbs, lines, other objects, and vehicles.

Lesson one – driver's side curb (or line)



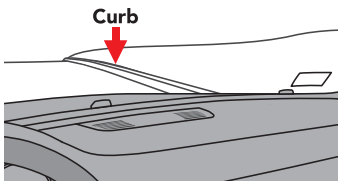
*View out the front windshield.
Reference points will be different
for everyone, depending on the
vehicle and the height of the driver.*

- Choose a pavement curb (or line), and tell your teen that the goal is to pull the driver's side of the vehicle 6–12 inches away. Coach them to slowly pull up parallel to the line, getting gradually closer, and stop when they think they are 6–12 inches away. Have them look at where the line intersects in the front window.
- Have your teen put the car in park and get out to check if the driver's side wheels are 6–12 inches from the line. If it's not the right distance, have them do it again, checking the reference points.

Making your teen safer

Even though Colorado law only requires 50 hours of supervised driving time over twelve months, studies show that the more time you drive together, the safer your teen will be when driving alone.

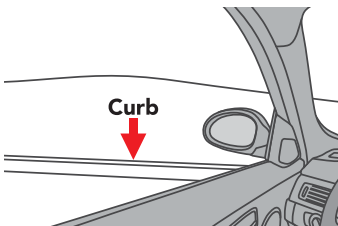
Lesson two – passenger's side curb (or line)



*View out the front windshield.
Reference points will be different
for everyone, depending on the
vehicle and the height of the driver.*

- Choose another curb (or line) parallel to the passenger's side, again pulling up slowly to within 6–12 inches. Use the same gradual pull-up method, but for this side, coach your teen to stop when the curb appears to intersect the center of the hood.
- Again, have your teen get out of the vehicle to check whether the tires are 6–12 inches from the curb. Keep practicing and making adjustments, noticing the reference point, until they can do it consistently.

Lesson three – front curb (or line)



*View out the driver's side window.
Reference points will be different
for everyone, depending on the
vehicle and the height of the driver.*

- Teach your teen to align the front bumper between 6–12 inches from a pavement curb (or line). Have them drive slowly straight toward the curb. Coach them to stop when the curb appears under the passenger's side mirror.
- Have your teen get out of the vehicle to check whether the front bumper is 6–12 inches from the curb. If not, have them adjust the reference point as needed and keep practicing.

Skill completed

supervisor initials

driver initials

#RoadReady

Backing up

Goal: Teach your teen how to safely drive backwards in a straight line and while turning.

Location: A large, level, mostly empty area.

Lesson one – before moving the vehicle

- Coach your teen that they must turn around and look backwards through the rear window when backing up. Using mirrors or backup cameras doesn't give a full view.
- Have your teen shift their hips and turn around until they get a good view behind the vehicle. They should drape their right arm over the back of the seat and grasp the top of the steering wheel with their left hand.

Lesson two – backing up in a straight line

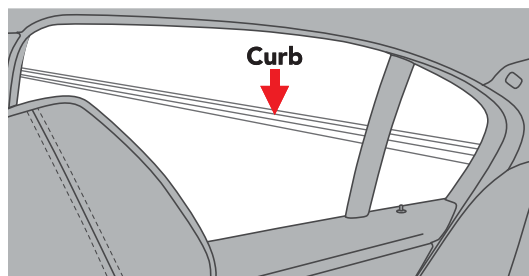
- Check all areas behind the vehicle prior to and while backing up.
- Grasp the steering wheel with the left hand and look over the right shoulder through the rear window.
- First release the brake, then use the accelerator gently, and only when necessary, to control speed. Keep it slow.

Lesson three – backing up in a turn

- If turning to the left, grasp the steering wheel with the right hand, or with the left hand if turning to the right. Remind your teen to turn the wheel in the direction they want the car to travel.
- Look in the direction the car is moving through the rear side windows.
- Back into the turn slowly, first releasing the brake, then using the accelerator if needed.

Lesson four – aligning rear bumper to a curb

- Choose a curb (or line) for a target.
- Have your teen back up toward the target, coaching them to stop when the curb appears near the middle of the rear right window when looking over their right shoulder.
- Have your teen put the car in park and set the emergency brake.
- Have your teen get out of the car to see whether the rear bumper is close to the target.
- If adjustments are needed, have your teen try again, establishing a new reference point. Repeat as often as needed until your teen can consistently come within close proximity to the target.



The driver's view out of the back passenger window. Reference points will be different for everyone, depending on the vehicle and the height of the driver.

Slow and consistent

Emphasize that backing up must be done at slow but consistent speeds. It's harder to maintain control of the car when it's in reverse.

Skill completed

supervisor initials

driver initials

#RoadReady

Driving on a quiet street – part one

Goal: Teach your teen to move and stop a vehicle safely and with confidence on quiet roads.

Location: Start in a large, level, mostly empty area. Move to a quiet neighborhood street when indicated. Before moving out onto the road, make sure that your teen has reviewed the driver's manual (available for download at www.Colorado.gov/Revenue/DMV) and is familiar with street signs, signals, pavement markings, and yield and speed laws.

Skill review

Starting in a quiet, large, level, empty area, review the skills learned so far. Have your teen drive several laps around the lot, practicing smooth braking and accelerating, maintaining steady speeds, steering into right and left turns, and using reference points to align the car with curbs (or lines).

Lesson one – commentary driving

Coach your teen to use “commentary driving” (see sidebar on page 2) throughout this lesson, if possible.

Lesson two – lane position

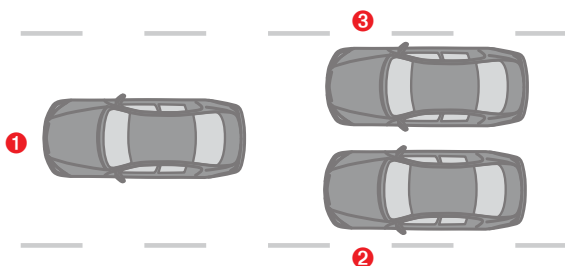
When you and your teen feel ready, move to a quiet street.

With your teen behind the wheel, first have them practice driving straight in three different lane positions. Do this for several miles, practicing each position at least 10 times:

Center position ①: The most common position, with the vehicle centered within the lane. Coach your teen that they should stay in the center position under most circumstances.

Left position ②: The vehicle positioned to the left side of the lane. This is usually done when making a left turn, to allow for a safety margin on the right side of the vehicle.

Right position ③: The vehicle positioned to the right side of the lane. This is usually done when making a right turn to allow for a safety margin on the left side of the vehicle.



Most driving is done in lane position number one.

Emergency vehicles

Make sure your teen understands what to do if they encounter emergency vehicles. First, turn down the radio to listen for the direction of the emergency vehicle(s). Stay calm and pull over to the nearest curb, clear of intersections, and wait for the emergency vehicle(s) to pass.

Lesson three – intersections

Coach your teen on these techniques for safely approaching an intersection:

- Search for vehicles, pedestrians, signs, and traffic signals.
- Check the rearview mirror for any potential hazards behind the car.
- If it's an intersection with traffic signals, identify who has the green light.
- If turning, put on the turn signal four seconds before making the turn.
- If a stop is required, stop behind the white stop line.
- Select the best lane for the intended direction of travel.
- Yield the right-of-way to pedestrians and other vehicles.

Skill completed

supervisor initials

driver initials

#RoadReady

Driving on a quiet street – part two

Goal: Teach your teen to turn both right and left safely and with confidence on quiet roads.

Location: A quiet block of single-lane roads, ideally without traffic signals at the intersections.

Lesson one – right turns

When your teen is comfortable with lane positions and intersections, it's time to practice turns. Start with right turns. Have your teen drive clockwise around the block 10–12 times:

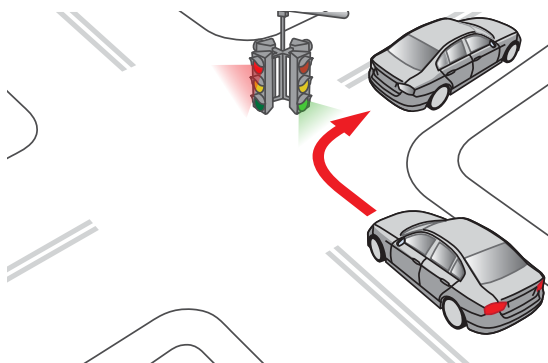
- Pick a line at the center of the intended travel path while steering through a turn. Make sure your teen does not fixate on one specific spot, but instead focuses on a broader path.
- Focus on smooth braking into the turn and acceleration out of the turn, as previously practiced in the large, level, empty area.
- Always check mirrors before turns and signal at least three seconds before turning.

Lesson two – left turns

When your teen is proficient at right turns, move on to left turns. Have your teen drive counterclockwise around the block 10–12 times, coaching them on these techniques for safe left turns:

- Position the vehicle close to the yellow line in the middle of the road.
- If there is a stop sign or red light, stop with wheels pointed straight ahead before the stop line, crosswalk or intersection.
- Search the intersection in all directions for vehicles, pedestrians, signs, and signals.
- Select a gap in traffic and pull straight forward toward the middle of the intersection. Coach your teen to avoid hesitating.
- Choose a steering path in the middle of the lane to the right of the yellow line. Turn into the travel lane closest to the yellow line.
- When the turn is complete, let the steering wheel slide back through the hands.
- Pick a new target 15–20 seconds ahead in the center of the travel path and accelerate gradually.

Be sure to practice with your teen in a variety of conditions, including at night and in inclement weather, as much as possible.



Have your teen drive around the block making right turns 10–12 times. When they are proficient, drive around the block 10–12 times making left turns.

Focus

Most drivers have a tendency to steer in the direction they look. If their eyes move to one side, the car may drift in that direction, too. Remind your teen to focus on a path line in the middle of their travel lane – and not fixate on lane lines or other objects. The rest of the area should be scanned quickly but frequently.

Skill completed

supervisor initials

driver initials

#RoadReady

Looking ahead

Goal: Teach your teen to develop defensive driving techniques and higher-level visual and anticipatory driving skills before moving on to more complex driving situations. In order to avoid last-second reactions and spot potential hazards, have your teen always look 12–15 seconds down the road. When they are looking far enough ahead, they will be able to spot hazards early and be well prepared to react to them.

Location: Start on a quiet neighborhood street. Out of respect to our neighbors, please do not use official state road test courses for practice. Move onto a road with light traffic when your teen is ready.

Lesson one – IPDE system

Teach your teen the IPDE system, a simple system to help new drivers recognize, anticipate and avoid risks before they turn into problems. IPDE stands for:

- Identify** potential risks, like oncoming vehicles, pedestrians, obstacles, or intersections.
- Predict** when and where there will be a conflict or problem.
- Decide** on the best course of action.
- Execute** that action.

Have your teen use commentary driving as they practice the IPDE system. As they drive, ask them to verbally describe their thoughts and actions in order to identify potential risks they see, predict problems these risks could cause, decide what to do to avoid a problem, and then execute the maneuver.

Lesson two – stopping-distance rule

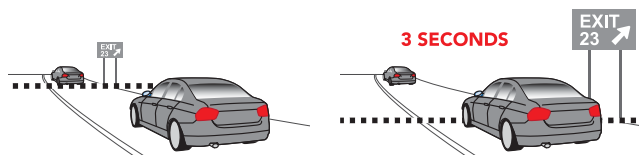
Teach your teen the stopping-distance rule, for the safest distance to stop behind another vehicle. When your vehicle stops, you should be far enough away from the car in front of you that you can see where its tires make contact with the ground. Any closer is too close.

Lesson three – three-second rule

Teach your teen the three-second rule for the appropriate following distance when driving behind other vehicles. The three-second rule is an important safety measure designed to give drivers enough time to safely steer or brake to avoid problems that occur in front of them on the road.

- Start counting when the rear bumper of the vehicle in front of you passes an object.
- Count “one thousand ONE, one thousand TWO, one thousand THREE.”
- Your front bumper should not pass that same object before you’ve reached “three.”

Have your teen practice the three-second rule at least 10–12 times, counting out loud to check whether their following distance is appropriate.



Your front bumper should not pass before you've reached "three."

Minimize risks

Rear-end collisions are the most common form of a car crash. Emphasize to your teen that increasing following distance behind other vehicles is the single best thing they can do to minimize the risk of a crash.

Skill completed

supervisor initials

driver initials

#RoadReady

Turning around

Goal: Teach your teen the best ways to turn a vehicle around in various circumstances.

Location: Start on a quiet neighborhood street with accessible driveways. Please be respectful of neighbors and private property. Move to a multi-lane road for U-turns, if legally allowed in your area.

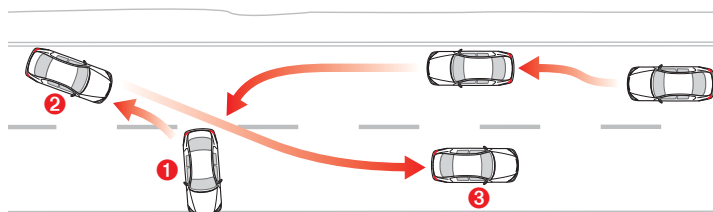
Lesson one – turning around safely

Start by coaching your teen that the safest and easiest way to turn around is to drive around the block. Since that's not always possible, it's important to practice other ways to turn around.

Lesson two – three-point turns

This more challenging turn should only be done when there is no available driveway. Three-point turns block both sides of a two-lane road, so coach your teen to make absolutely sure that the traffic is clear in both directions:

- Position yourself as close as possible to the right edge of the curb. Signal a left turn. Check for traffic and pedestrians in both directions (including your blind spot). Wait until there is a 20–30 second gap to complete the turn.



Practice three-point turns at least 10 times each.

- Move slowly and turn the steering wheel quickly to the left. This will bring the vehicle perpendicular to the street about two feet from the curb. Come to a stop.
- Turn the steering wheel fully to the right. Check for traffic in both directions (including your blind spot). Shift into reverse and start backing up, while looking over your right shoulder.
- Back up to the opposite curb, stopping just before the curb.
- Check again for traffic in both directions (including your blind spot). Signal a left. Shift into drive (or for manual cars, first gear) and accelerate to the proper speed.

Lesson three – U-turns

First explain that U-turns can be very dangerous, and should only be done where they are legal.

- Begin the U-turn in the left lane, closest to the center line or median.
- Be sure there is enough room to make the turn without hitting the curb or any parked cars.
- Signal to indicate the direction of the turn, checking carefully for oncoming traffic.
- Move forward, turning the wheel sharply to turn around.
- Finish the U-turn in the opposite direction and accelerate to an appropriate speed.

Backing Up

Remind your teen to always look in the direction they are backing up and to back up slowly. When backing up a vehicle they need to remember they are responsible for traffic in all directions. Make sure they understand they do not have the right of way and must take care not to interfere with other traffic.

Skill completed

supervisor initials

driver initials

#RoadReady

What is GDL?

Colorado implemented Graduated Driver Licensing (GDL) laws to help teenagers gain important driving skills gradually while limiting dangers. Whereas the GDL laws aren't always convenient for busy parents and teens, their impact on saving young lives is indisputable. Teen traffic deaths are down 67% since GDL laws went into effect in Colorado in 2005.

Definitions and Details

Passenger Restrictions: For the first six months, your teen cannot have any passengers under age 21, unless a parent or another licensed adult driver is in the vehicle. If after the first six months, you feel your teen is responsible enough to drive unsupervised with friends, he or she may do so with only one passenger under age 21 for the next six months. Siblings and passengers with medical emergencies are exceptions. At any time, no more than one passenger is allowed in the front seat.

Mandatory Seat Belts: By law, ALL teen drivers and passengers must wear seat belts (no sharing!). Teen drivers are also responsible for the safety of their passengers and can be ticketed if they are not properly wearing seat belts.

Power Down!: Distracted driving can have deadly consequences. Teens under age 18 are prohibited from texting or talking on a cell phone while driving. Teens can be fined and may risk losing their license. Exceptions include emergency calls to the police or fire department.

Curfew: For the first year as a licensed driver, teen drivers must abide by a curfew – no driving between midnight and 5 a.m. unless accompanied by an instructor, parent or legal guardian. Exceptions include driving to and from school or work (signed statement from school or work is required), medical emergencies and emancipated minors.

Zero Tolerance for Drunk Driving: Driving under the influence of alcohol – even a trace of alcohol on minor drivers – is punishable by law. Parents and teens should devise a back up plan if necessary to make sure the teen arrives home safely. For a refresher on all traffic laws, parents can review the Department of Revenue's Drivers Handbook: www.Colorado.gov/Revenue/DMV. The Parent GDL Online Course is available at www.COTeenDriver.com.

Other Ways Teens Can Lose Their License: Teens can lose his or her driver's license for being caught with alcohol or marijuana, even when not behind the wheel. Recent updates to the Minor in Possession laws state that an alcohol or marijuana violation by anyone under 21 will result in an automatic loss of the violator's driver's license.

Supervised driving log

A parent, legal guardian or responsible adult 21 years of age or older, who signed the Affidavit of Liability and Guardianship, must certify that the driver has completed at least 50 hours of driving experience, of which 10 hours must be at night. The Supervised Driving Log on the following pages should be used to keep track of practice driving time. You can also use the Log to assure your teen is practicing in a variety of driving environments and weather conditions. This Log will need to be turned into the DMV when your teen goes to take their road test.

With Support From



DOWNLOAD
OUR **FREE**
MOBILE APP

RoadReady®

Date	Driving Time	Day/Night	Driving Environment (ex. rural, highway)	Weather	Skills Practiced
		<input type="checkbox"/> Day <input type="checkbox"/> Night			
		<input type="checkbox"/> Day <input type="checkbox"/> Night			
		<input type="checkbox"/> Day <input type="checkbox"/> Night			
		<input type="checkbox"/> Day <input type="checkbox"/> Night			
		<input type="checkbox"/> Day <input type="checkbox"/> Night			
		<input type="checkbox"/> Day <input type="checkbox"/> Night			
		<input type="checkbox"/> Day <input type="checkbox"/> Night			
		<input type="checkbox"/> Day <input type="checkbox"/> Night			
		<input type="checkbox"/> Day <input type="checkbox"/> Night			
		<input type="checkbox"/> Day <input type="checkbox"/> Night			
		<input type="checkbox"/> Day <input type="checkbox"/> Night			
		<input type="checkbox"/> Day <input type="checkbox"/> Night			
		<input type="checkbox"/> Day <input type="checkbox"/> Night			
		<input type="checkbox"/> Day <input type="checkbox"/> Night			
		<input type="checkbox"/> Day <input type="checkbox"/> Night			
		<input type="checkbox"/> Day <input type="checkbox"/> Night			

SUPERVISED DRIVING LOG

Supervised Driving Log - DR2324

Colorado Division of Motor Vehicles

Date	Driving Time	Day/Night	Driving Environment (ex. rural, highway)	Weather	Skills Practiced
		<input type="checkbox"/> Day <input type="checkbox"/> Night			
		<input type="checkbox"/> Day <input type="checkbox"/> Night			
		<input type="checkbox"/> Day <input type="checkbox"/> Night			
		<input type="checkbox"/> Day <input type="checkbox"/> Night			
		<input type="checkbox"/> Day <input type="checkbox"/> Night			
		<input type="checkbox"/> Day <input type="checkbox"/> Night			
		<input type="checkbox"/> Day <input type="checkbox"/> Night			
		<input type="checkbox"/> Day <input type="checkbox"/> Night			
		<input type="checkbox"/> Day <input type="checkbox"/> Night			
		<input type="checkbox"/> Day <input type="checkbox"/> Night			
		<input type="checkbox"/> Day <input type="checkbox"/> Night			
		<input type="checkbox"/> Day <input type="checkbox"/> Night			
		<input type="checkbox"/> Day <input type="checkbox"/> Night			
		<input type="checkbox"/> Day <input type="checkbox"/> Night			
		<input type="checkbox"/> Day <input type="checkbox"/> Night			
		<input type="checkbox"/> Day <input type="checkbox"/> Night			

Date	Driving Time	Day/Night	Driving Environment (ex. rural, highway)	Weather	Skills Practiced
		<input type="checkbox"/> Day <input type="checkbox"/> Night			
		<input type="checkbox"/> Day <input type="checkbox"/> Night			
		<input type="checkbox"/> Day <input type="checkbox"/> Night			
		<input type="checkbox"/> Day <input type="checkbox"/> Night			
		<input type="checkbox"/> Day <input type="checkbox"/> Night			
		<input type="checkbox"/> Day <input type="checkbox"/> Night			
		<input type="checkbox"/> Day <input type="checkbox"/> Night			
		<input type="checkbox"/> Day <input type="checkbox"/> Night			
		<input type="checkbox"/> Day <input type="checkbox"/> Night			
		<input type="checkbox"/> Day <input type="checkbox"/> Night			
		<input type="checkbox"/> Day <input type="checkbox"/> Night			
		<input type="checkbox"/> Day <input type="checkbox"/> Night			
		<input type="checkbox"/> Day <input type="checkbox"/> Night			
		<input type="checkbox"/> Day <input type="checkbox"/> Night			
		<input type="checkbox"/> Day <input type="checkbox"/> Night			
		<input type="checkbox"/> Day <input type="checkbox"/> Night			

SUPERVISED DRIVING LOG

Supervised Driving Log - DR2324

Colorado Division of Motor Vehicles

Date	Driving Time	Day/Night	Driving Environment (ex. rural, highway)	Weather	Skills Practiced
		<input type="checkbox"/> Day <input type="checkbox"/> Night			
		<input type="checkbox"/> Day <input type="checkbox"/> Night			
		<input type="checkbox"/> Day <input type="checkbox"/> Night			
		<input type="checkbox"/> Day <input type="checkbox"/> Night			
		<input type="checkbox"/> Day <input type="checkbox"/> Night			
		<input type="checkbox"/> Day <input type="checkbox"/> Night			
		<input type="checkbox"/> Day <input type="checkbox"/> Night			
		<input type="checkbox"/> Day <input type="checkbox"/> Night			
		<input type="checkbox"/> Day <input type="checkbox"/> Night			
		<input type="checkbox"/> Day <input type="checkbox"/> Night			
		<input type="checkbox"/> Day <input type="checkbox"/> Night			
		<input type="checkbox"/> Day <input type="checkbox"/> Night			
		<input type="checkbox"/> Day <input type="checkbox"/> Night			
		<input type="checkbox"/> Day <input type="checkbox"/> Night			
		<input type="checkbox"/> Day <input type="checkbox"/> Night			
		<input type="checkbox"/> Day <input type="checkbox"/> Night			

Date	Driving Time	Day/Night	Driving Environment (ex. rural, highway)	Weather	Skills Practiced
		<input type="checkbox"/> Day <input type="checkbox"/> Night			
		<input type="checkbox"/> Day <input type="checkbox"/> Night			
		<input type="checkbox"/> Day <input type="checkbox"/> Night			
		<input type="checkbox"/> Day <input type="checkbox"/> Night			
		<input type="checkbox"/> Day <input type="checkbox"/> Night			
		<input type="checkbox"/> Day <input type="checkbox"/> Night			
		<input type="checkbox"/> Day <input type="checkbox"/> Night			
		<input type="checkbox"/> Day <input type="checkbox"/> Night			
		<input type="checkbox"/> Day <input type="checkbox"/> Night			
		<input type="checkbox"/> Day <input type="checkbox"/> Night			
		<input type="checkbox"/> Day <input type="checkbox"/> Night			
		<input type="checkbox"/> Day <input type="checkbox"/> Night			
		<input type="checkbox"/> Day <input type="checkbox"/> Night			
		<input type="checkbox"/> Day <input type="checkbox"/> Night			
		<input type="checkbox"/> Day <input type="checkbox"/> Night			
		<input type="checkbox"/> Day <input type="checkbox"/> Night			

SUPERVISED DRIVING LOG

Supervised Driving Log - DR2324

Colorado Division of Motor Vehicles

Date	Driving Time	Day/Night	Driving Environment (ex. rural, highway)	Weather	Skills Practiced
		<input type="checkbox"/> Day <input type="checkbox"/> Night			
		<input type="checkbox"/> Day <input type="checkbox"/> Night			
		<input type="checkbox"/> Day <input type="checkbox"/> Night			
		<input type="checkbox"/> Day <input type="checkbox"/> Night			
		<input type="checkbox"/> Day <input type="checkbox"/> Night			
		<input type="checkbox"/> Day <input type="checkbox"/> Night			
		<input type="checkbox"/> Day <input type="checkbox"/> Night			
		<input type="checkbox"/> Day <input type="checkbox"/> Night			
		<input type="checkbox"/> Day <input type="checkbox"/> Night			
		<input type="checkbox"/> Day <input type="checkbox"/> Night			
		<input type="checkbox"/> Day <input type="checkbox"/> Night			
		<input type="checkbox"/> Day <input type="checkbox"/> Night			
		<input type="checkbox"/> Day <input type="checkbox"/> Night			
		<input type="checkbox"/> Day <input type="checkbox"/> Night			
		<input type="checkbox"/> Day <input type="checkbox"/> Night			
		<input type="checkbox"/> Day <input type="checkbox"/> Night			

Date	Driving Time	Day/Night	Driving Environment (ex. rural, highway)	Weather	Skills Practiced
		<input type="checkbox"/> Day <input type="checkbox"/> Night			
		<input type="checkbox"/> Day <input type="checkbox"/> Night			
		<input type="checkbox"/> Day <input type="checkbox"/> Night			
		<input type="checkbox"/> Day <input type="checkbox"/> Night			
		<input type="checkbox"/> Day <input type="checkbox"/> Night			
		<input type="checkbox"/> Day <input type="checkbox"/> Night			
		<input type="checkbox"/> Day <input type="checkbox"/> Night			
		<input type="checkbox"/> Day <input type="checkbox"/> Night			
		<input type="checkbox"/> Day <input type="checkbox"/> Night			
		<input type="checkbox"/> Day <input type="checkbox"/> Night			
		<input type="checkbox"/> Day <input type="checkbox"/> Night			
		<input type="checkbox"/> Day <input type="checkbox"/> Night			
		<input type="checkbox"/> Day <input type="checkbox"/> Night			
		<input type="checkbox"/> Day <input type="checkbox"/> Night			
		<input type="checkbox"/> Day <input type="checkbox"/> Night			
		<input type="checkbox"/> Day <input type="checkbox"/> Night			

SUPERVISED DRIVING LOG

Supervised Driving Log - DR2324

Colorado Division of Motor Vehicles

Date	Driving Time	Day/Night	Driving Environment (ex. rural, highway)	Weather	Skills Practiced
		<input type="checkbox"/> Day <input type="checkbox"/> Night			
		<input type="checkbox"/> Day <input type="checkbox"/> Night			
		<input type="checkbox"/> Day <input type="checkbox"/> Night			
		<input type="checkbox"/> Day <input type="checkbox"/> Night			
		<input type="checkbox"/> Day <input type="checkbox"/> Night			
		<input type="checkbox"/> Day <input type="checkbox"/> Night			
		<input type="checkbox"/> Day <input type="checkbox"/> Night			
		<input type="checkbox"/> Day <input type="checkbox"/> Night			
		<input type="checkbox"/> Day <input type="checkbox"/> Night			
		<input type="checkbox"/> Day <input type="checkbox"/> Night			
		<input type="checkbox"/> Day <input type="checkbox"/> Night			
		<input type="checkbox"/> Day <input type="checkbox"/> Night			
		<input type="checkbox"/> Day <input type="checkbox"/> Night			
		<input type="checkbox"/> Day <input type="checkbox"/> Night			
		<input type="checkbox"/> Day <input type="checkbox"/> Night			
		<input type="checkbox"/> Day <input type="checkbox"/> Night			

Date	Driving Time	Day/Night	Driving Environment (ex. rural, highway)	Weather	Skills Practiced
		<input type="checkbox"/> Day <input type="checkbox"/> Night			
		<input type="checkbox"/> Day <input type="checkbox"/> Night			
		<input type="checkbox"/> Day <input type="checkbox"/> Night			
		<input type="checkbox"/> Day <input type="checkbox"/> Night			
		<input type="checkbox"/> Day <input type="checkbox"/> Night			
		<input type="checkbox"/> Day <input type="checkbox"/> Night			
		<input type="checkbox"/> Day <input type="checkbox"/> Night			
		<input type="checkbox"/> Day <input type="checkbox"/> Night			
		<input type="checkbox"/> Day <input type="checkbox"/> Night			
		<input type="checkbox"/> Day <input type="checkbox"/> Night			
		<input type="checkbox"/> Day <input type="checkbox"/> Night			

The verifying signature must be from one of the signers of the Affidavit of Liability and Guardianship, from DR 2460, or from the Driver Education Instructor. Please check all totals prior to signing. By signing below, I certify that the above total hours of driving experience is true and accurate.

Signed

Parent/Guardian or Driver Education Instructor

Date

Parent/teen driving contract

Rules and Consequences

- Read, discuss and put into effect each rule in the contract.
- Discuss and write-in possible consequences.
- Sign and date at the bottom to confirm your agreement and commitment.
- Tear out contract and display as a reminder.

DRIVING RULES	CONSEQUENCES
1. PASSENGER RESTRICTIONS <input type="checkbox"/> I agree to abide by the state law for passenger restrictions. I will have no passengers under 21 during the first six months with my license and no more than one passenger under 21 until I have had my license for one year. <input type="checkbox"/> At any time there will be only one passenger in the front seat.	<input type="checkbox"/> Lose driving privileges for _____ wks/mos <input type="checkbox"/> Other: _____
2. SEAT BELTS <input type="checkbox"/> I will always wear a seat belt. <input type="checkbox"/> All of my passengers will wear seat belts, as required by law.	<input type="checkbox"/> Lose driving privileges for _____ wks/mos <input type="checkbox"/> Other: _____
3. CURFEWS <input type="checkbox"/> I will not drive after _____ p.m. at night. <input type="checkbox"/> I understand that it is against state law to drive between midnight and 5 a.m. for the first year with my license. Check local curfew, which may vary from state laws.	<input type="checkbox"/> Lose driving privileges for _____ wks/mos <input type="checkbox"/> Other: _____
4. CHECK IN <input type="checkbox"/> I will check in with my parent(s) or guardian(s) every time I drive and let them know where I am going, who I am going with and when I will return.	<input type="checkbox"/> Lose driving privileges for _____ wks/mos <input type="checkbox"/> Other: _____
5. ALCOHOL AND DRUGS <input type="checkbox"/> I will never use alcohol or drugs when I am driving and never ride with someone who has used them. Colorado has a ZERO TOLERANCE law for minor drivers.	<input type="checkbox"/> Lose driving privileges for _____ wks/mos <input type="checkbox"/> Other: _____
6. DISTRACTIONS <input type="checkbox"/> I will not talk/text on my cell phone while driving, as required by law. <input type="checkbox"/> I will not eat while driving. <input type="checkbox"/> I will not adjust the radio, CD or MP3 player when driving. <input type="checkbox"/> I will not wear headphones to listen to music while driving. <input type="checkbox"/> I will not allow any passenger "horseplay" while driving.	<input type="checkbox"/> Lose driving privileges for _____ wks/mos <input type="checkbox"/> Other: _____
7. DRIVING WHILE TIRED OR EMOTIONAL <input type="checkbox"/> I will not drive if I am overly tired. <input type="checkbox"/> I will not drive if I am overly emotional (i.e. excited, angry, sad).	<input type="checkbox"/> Lose driving privileges for _____ wks/mos <input type="checkbox"/> Other: _____
8. TRAFFIC LAWS <input type="checkbox"/> I will obey all traffic laws and rules of the road.	<input type="checkbox"/> Lose driving privileges for _____ wks/mos <input type="checkbox"/> Other: _____
9. CARRYING IMPORTANT DOCUMENTS <input type="checkbox"/> I will always carry my driver's license, registration, insurance papers and emergency information when I drive.	<input type="checkbox"/> Lose driving privileges for _____ wks/mos <input type="checkbox"/> Other: _____
10. OTHER:	<input type="checkbox"/> Lose driving privileges for _____ wks/mos <input type="checkbox"/> Other: _____

We both understand and agree to these driving conditions and rules.

Parent Signature

Teen Signature

Date

**Are you checking your mirrors?
Is your phone off?
Are your blind spots clear?
Did you signal?
Are your headlights on?
Are you checking your speed?**

Handing your teens the keys isn't the easiest thing to do. We're happy to help keep you all safe—and at ease.

Get to a better State[®]. Visit teendriving.statefarm.com today.



Parking – part one

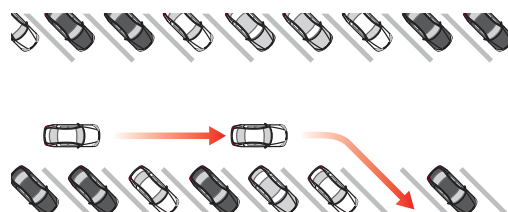
Goal: Teach your teen to master angle and perpendicular parking.

Location: Start in large, level, mostly empty areas. You will need angled and perpendicular spaces.

Lesson one – angle parking

The gentler turn makes this the easiest type of parking for new drivers.

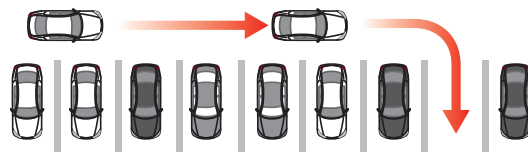
- Signal to indicate intent to turn into a parking space.
- Move forward until the steering wheel is aligned with the first pavement line marking the space.
- Look at the middle of the parking space and turn the wheel sharply at a slow, controlled speed.
- Steer toward the center of the space, straightening the wheel upon entry.
- Stop when the front bumper is six inches from the curb or from the end of the space.
- After you've parked, put the gear in park for automatic transmissions (for manual transmissions, put the car either in first or reverse) and set the parking brake. Shut off the ignition and remove the key. Check for traffic prior to getting out. Lock the doors.



Turn when the front of your vehicle reaches the edge of the space. Stay alert for cars backing out to leave their space.

Lesson two – perpendicular parking

The steps are the same as angle parking, but the sharper turn into perpendicular spaces may require more practice.



Lesson three – exiting parking spaces

- With a foot on the brake, shift into reverse, which will signal that you will be backing up.
- Turn around to look for oncoming traffic.
- For **angled spaces**, back up straight until the driver's seat is even with the bumper of the next vehicle on the turning side. For **perpendicular spaces**, back up straight until the windshield is aligned with the bumper of the next vehicle.
- Quickly turn the wheel in the direction that the rear of the car needs to go.
- Glance forward to make sure the front bumper is clear of the car on the other side.
- When the front bumper clears the other vehicle, stop, shift into drive, and pull forward to complete the exit.

Turn when your outside mirror reaches the edge of the space. Always finish with your wheels straight and your car centered in the space.

Disabled parking: The person that owns the disabled placard must be entering or exiting the vehicle in order to park in a disabled parking space. If you park illegally in a designated disabled parking spot *without a placard or plate*, you will be subject to a misdemeanor with a fine between \$350 to \$5,000, possible jail time, and loss of driving privileges, and your car can be impounded.

Disabled parking

If you are parking in a disabled parking space with a placard or plate not issued to **YOU PERSONALLY**, you will be subject to double the fines as well as jail time, loss of driving privileges and towing. The bottom line: If it is not your tag or plate you cannot use it or use the reserved spots! **DO NOT BORROW GRANDMA'S PARKING PLACARD!**

Skill completed

supervisor initials

driver initials

#RoadReady

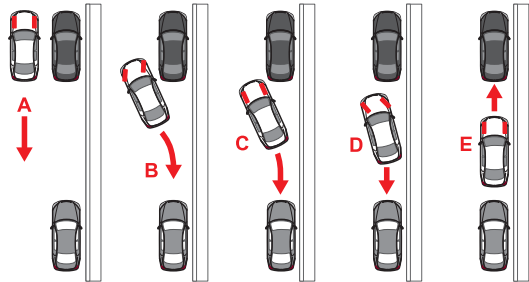
Parking – part two

Goal: Teach your teen to master parallel parking.

Location: A street with marked parallel parking spaces at a time of day when traffic is light.

Lesson one – parallel parking

Parallel parking is a difficult maneuver for new drivers, so patience is key. Many drivers never learn to do it well, especially in areas where it's not common. Because of the difficulty of learning parallel parking, and because there are several different teaching methods, **this skill is sometimes best taught by a professional driving instructor.** Assess your own parallel parking skills and your teen's abilities before beginning.



Start by practicing with cones.

- Select an available space on the passenger's side of the car.
- Signal when approaching the space and check mirrors for traffic behind the vehicle.
- Move forward past the space until lined up directly parallel to the car parked in front, 2–5 feet away. Being too close or too far away will make parking more difficult.
- With a foot on the brake, shift to reverse and turn around to check for traffic and make sure the travel path is clear.
- Release the brake, start backing up slowly, and start to make an "S" turn, turning first right and then left.

- Glance both forward and backward repeatedly to check the space around the car while turning.
- Once the rear of the car is mostly in the space, start turning in the other direction to straighten out.
- Adjust the vehicle's position as needed to center it in the space.
- Check to see if the wheels are 6–12 inches from the curb. If not, pull out and try again.
- Always check for passing vehicles and cyclists before you open your door.

Lesson two – exiting a parallel parking space

- With a foot on the brake, shift to reverse, turn around, and back as close as possible to the vehicle behind you.
- Check for traffic, signal, and shift into drive.
- Make sure the travel path is clear, then move slowly forward while steering rapidly out of the space.

Lesson three – parallel parking on a hill

Make sure the vehicle is in park and the parking brake is properly engaged. To prevent the vehicle from rolling into traffic, instruct your teen to turn the front wheels as follows:

- Toward the curb when parking downhill
- Away from the curb when parking uphill

If there is no curb, have your teen point the wheel so that the car would roll away from traffic if it moved.

Learning to park

When practicing parallel parking, your teen will probably hit the curb several times. Tell them not to worry – even the best parallel parkers do this often. Coach them to pull out of the space and try again, adjusting their turning angle as needed.

Skill completed

supervisor initials

driver initials

#RoadReady

Multi-lane roads – part one

Goal: Teach your teen to drive safely and with confidence on busier, more complex, multi-lane roads.

Location: A busier, multi-lane road. Choose a time with limited traffic, such as a weekend morning.

Skill review

By now, your teen should be comfortable driving on quiet roads. Before starting multi-lane road practice, it's important to review some key information from previous lessons. The following skills are crucial to safe driving on busier, more complicated roads.

Lesson one – mirror positioning, monitoring and blind spots

Refer to Skills One and Two. Clearly seeing the adjacent traffic is especially important on multi-lane roads. Remind your teen to check the mirror positions when entering the car, and to constantly monitor the traffic around them.

Lesson two – stopping distance

Refer to Skill six. Remind your teen that when stopping their vehicle behind another one, they should be far enough back to see where the other car's tires meet the road.

Lesson three – following distance

Refer to Skill six. Review the three-second rule with your teen, emphasizing that increasing following distance is the single best way to reduce crash risk. This gives the driver visibility, time, and space to avoid crashes.

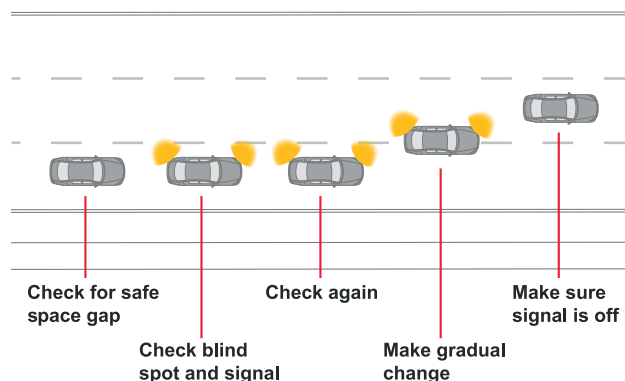
Lesson four – safe lane changing

First, coach your teen not to change lanes unnecessarily. Studies show that while it may not look like it, most travel lanes flow at around the same rate. Changing lanes in an effort to save time doesn't actually save time, but it does increase crash risk.

Ask your teen to list valid reasons to change lanes. Good answers include: to make a turn, to avoid an obstacle, to exit the road, to park, or to pass another vehicle.

Have your teen practice these lane change steps 15–20 times:

- Check traffic to the rear and the sides for an appropriate gap.
- Signal to indicate intention to change lanes.
- Recheck traffic, including a glance over the shoulder at the mirror blind spot area.
- Maintain speed or accelerate slightly before and during the lane change.
- Gradually move into the new lane.
- Adjust following distance, using the three-second rule.



When changing lanes, always recheck traffic with a glance over the shoulder at the blind spot.

Reasonable distance

Motorcycles, bicyclists, and pedestrians are more difficult to see than cars because they are smaller – and drivers tend to focus on looking for cars. Traffic, weather, and road conditions require cyclists to react differently than car drivers. It can be difficult for young drivers to judge and predict their actions. Always give them a wide berth.

Skill completed

supervisor initials

driver initials

#RoadReady

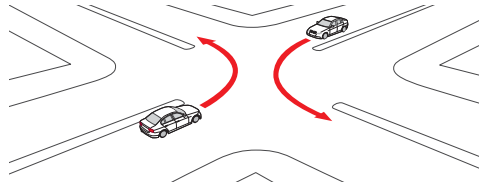
Multi-lane roads – part two

Goal: Teach your teen to drive safely and with confidence on busier, more complex, multi-lane roads.

Location: A busier, multi-lane road. Choose a time with limited traffic, such as a weekend morning.

Lesson one – right turns

Start with right turns, which are fairly simple. Right turns are always made from the right lane of the current road to the first, open lane of the new road. Look for signs and signals that indicate whether “right on red” is allowed. Practice right turns 10–12 times before moving on to left turns.



Lesson two – left turns

Left turns should almost always begin and end in the closest lane to the right of the yellow line. Choose a steering path in the middle of the closest lane to the right of the yellow line.

There are three types of left turns:

- **Protected left turns** with a designated left turn lane and left turn signal
- **Semi-protected left turns** made from a center or shared turn lane
- **Unprotected left turns** made from an active travel lane

Protected left turns should be made from the designated lane when the left turn signal displays a green arrow.

For semi-protected and unprotected left turns, coach your teen on these steps:

- Make sure the vehicle is in the correct lane to make a left turn.
- Signal the turn and begin slowing down at least 100 feet from the intersection.
- Move carefully into the intersection. Don't turn the wheel until you're ready to make the turn.
- Yield to any vehicles, bicycles, or pedestrians.
- When there is sufficient space with no oncoming traffic, move ahead into the turn.
- Choose a steering path line in the middle of the closest lane to the right of the yellow line.

Lesson three – safe passing procedures

Discourage your teen from passing other cars unnecessarily. If passing is necessary, the following steps should be observed:

- Position your vehicle more than four seconds behind the vehicle to be passed.
- Check mirrors and blind spots for oncoming traffic.
- Check the passing lane ahead to make sure there's plenty of space before you try to pass.
- Signal intent to pass and accelerate quickly to match the speed of traffic flow.
- While passing, monitor the space in front of and behind your vehicle and check the rearview mirror for the front of the car being passed.
- When you see the front of the passed car in the rearview mirror and your vehicle is well clear, signal intent, gently and slowly move back to the original lane, cancel the signal, and maintain speed.

Making left turns

Left turns are one of the hardest maneuvers for teens to master. Be patient. New drivers often have difficulty judging the speed and distances of multiple lanes of oncoming traffic. Practice judging oncoming vehicles' distance from your vehicle by counting out loud the time it takes for them to reach your car from a designated point.

Skill completed

supervisor initials

driver initials

#RoadReady

City driving – part one

Goal: Teach your teen to drive safely and confidently in the complex environment of city driving.

Note: City driving takes hundreds of hours, if not several years, to master.

Location: Busy, urban streets. Start at times when traffic is light, moving on to heavier traffic times as your teen gains skill in this situation.

Skill review

Since the busy, crowded environment of city driving is challenging for new drivers, this is a good time to review key driving skills. **The most important skill for drivers is the ability to make good decisions.** City driving forces drivers to make lots of decisions quickly. The three things they need to drive safely in the city are:

- **Visibility:** To see potential problems in all directions
- **Space:** To maneuver around obstacles and avoid hazards
- **Time:** To anticipate risks and make adjustments to speed or position

Lesson one – maximizing visibility and space

As you practice, have your teen focus on making decisions that will maximize visibility and space around the vehicle, increasing the available reaction time.

- **Looking ahead (refer to Skill six):** Congested city driving leaves very little room for error. Identifying and anticipating potential problems is crucial.
- **Covering the brake:** Coach your teen that when they spot a hazard, they should “cover” the brake by taking their foot off the accelerator and holding it over the brake. This will prepare them to slow down or stop suddenly. Make sure they don’t “ride” the brake. Riding the brake confuses other drivers and puts unnecessary wear on the brakes.

Lesson two – identifying hazards

As you begin city driving practice, have your teen drive through several blocks to identify and name common hazards on busy, congested streets. Ask them to describe how they will safely deal with each hazard they identify.

Such hazards may include:

- Parked cars, cars entering or exiting parking spaces, and car doors opening
- Delivery trucks stopping suddenly, with drivers racing to and from the trucks
- Buses making frequent stops, loading and unloading passengers
- Blind alleys, with cars or cyclists darting out
- Pedestrians and cyclists moving unpredictably, crossing streets illegally, etc.
- Limited visibility and intersections spaced at shorter intervals
- Aggressive drivers competing for lane space and parking spots
- Stop-and-go traffic flow

Scan first

Keep reminding your teen that constant awareness and looking ahead are the keys to learning to drive safely on city streets. Emphasize the idea that a green light means, “Scan the intersection first, then go.”

Skill completed

supervisor initials

driver initials

#RoadReady

City driving – part two

Goal: Teach your teen to drive safely and confidently in the complex environment of city driving.

Note: *This is not a goal that will be achieved in a single session. Spend as much time as possible with your teen practicing safe city driving skills.*

Location: Busy urban streets. Start at times when traffic is light, moving on to heavier traffic times as your teen gains skill.

Lesson one – avoiding obstacles

Focus on lane position to avoid obstacles: City driving involves many circumstances in which travel lanes are shared, congested, and partially or fully blocked. During practice sessions on busy city roads, have your teen identify these steps to safely avoid obstacles:

- Identify right-lane obstacles, such as stopped buses, parked cars, delivery trucks, and cyclists.
- Identify left-lane obstacles, such as vehicles waiting to make a left turn, or cars traveling in the opposite direction drifting over the center line.
- Identify the least-congested travel lane. *Hint: On a three-lane road, this is usually the center lane.*
- Position the vehicle in the lane at the greatest distance possible from any obstacles.

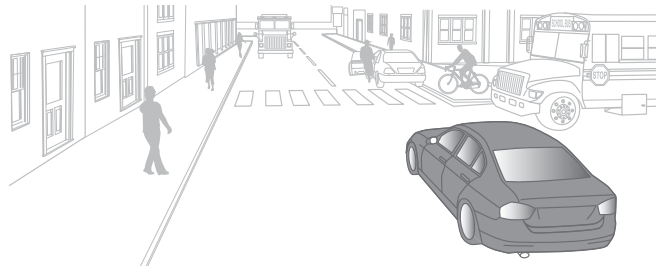
It can be tempting to pass vehicles on congested streets, when obstacles or traffic volume slow traffic. However, this can be dangerous, due to closely spaced intersections, irregular traffic flow, cars entering and exiting parking spots, etc. Coach your teen to avoid passing on busy city streets.

Lesson two – deadly distractions

What happens inside the car can be just as dangerous as what happens outside. **Engaging in distracting activities while driving can be deadly, especially for young drivers.** Ask your teen to list dangerous driving distractions. Their answers should include:

- Talking or texting
- Changing radio stations, or shuffling/streaming music – or dialing a phone
- Passengers, pets, or objects moving in the car
- Eating, drinking, or smoking
- Searching for an item
- Intense or emotional conversations
- Putting on makeup or looking in the mirror

Coach your teen to avoid distracting activities whenever possible, but especially in busy, congested environments. Remind them to focus on keeping as much space as possible around the vehicle at all times.



Remind your teen to stay alert, scan their surroundings, and not fixate on any one thing.

More is better

City driving skills take a long time to acquire. Spend as much time and drive in as many circumstances with your teen (night, inclement weather) as you are able. Plan trips to less-familiar places where you might not normally travel.

Skill completed

supervisor initials

driver initials

#RoadReady

Highway driving – part one

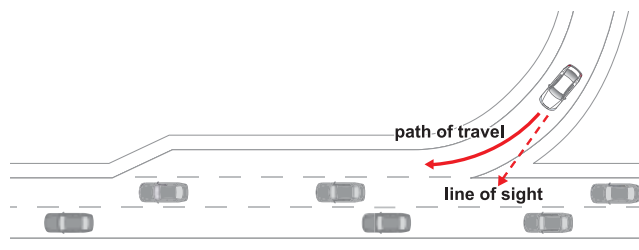
Goal: Teach your teen highway basics and how to safely enter and exit a highway.

Location: Start on a multi-lane highway with easily accessible exits, at a time when traffic is light, such as a weekend morning. Move on to practice at heavier traffic times when your teen is ready.

Lesson one – observation

Have your teen spend some time on highways with you as the driver and your teen as the passenger. Emphasize the importance of looking ahead to anticipate potential problems, and explain key highway features, such as:

- The different kinds of interchanges
- The meanings of highway signs and signals
- The meanings of different lane lines and markings



There is plenty of time to merge. If a gap doesn't present itself immediately, adjust your speed in order to find one.

Teach your teen three rules to remember when driving on a highway:

- Maintain proper speed.
- Create space.
- Always use your signal.

Lesson two – on-ramp segments

Explain the three segments of on-ramps, and how they're used:

- **Entrance area:** This stretch allows the driver time to search the highway and evaluate how much space they have to enter and what speed is needed.
- **Acceleration area:** The driver brings the vehicle up to the speed of highway traffic flow.
- **Merge area:** The driver uses this space to merge into the traffic flow.

Lesson three – merging

Teach the steps for merging onto a highway:

- At the entrance area, make quick glances at the highway, scanning for vehicles and entry gaps.
- In the acceleration area, signal to show intent to enter the highway and adjust speed to match the traffic flow.
- In the merge area, enter the flow of traffic, checking mirrors and blind spots.
- Turn off the turn signal and begin looking ahead to anticipate problems or upcoming lane changes.
- Do not completely stop in the entrance area unless absolutely necessary.

Lesson four – exiting

Teach the steps for exiting a highway:

- Identify the exit well ahead of time.
- Scan traffic for problems when approaching the exit, but don't slow down on the highway.
- Start to signal four to six seconds before reaching the ramp.
- Upon entering the ramp, tap the brakes and begin rapidly reducing speed.
- Slow down to the posted exit ramp speed limit before reaching the curve.

Worthy of repetition

Keep coaching your teen that constant awareness and looking ahead are the keys to learning to drive safely. When riding behind a motorcycle, increase your following distance – motorcycles have a shorter stopping distance, and riders are less protected in collisions.

Skill completed

supervisor initials

driver initials

#RoadReady

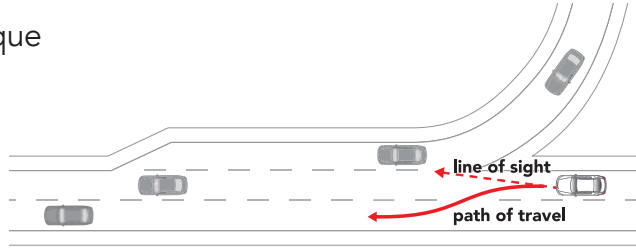
Highway driving – part two

Goal: Teach your teen to maneuver safely in complex highway driving environments at higher speeds.

Location: Start on a multi-lane highway with easily-accessible exits, at a time when traffic is light, such as a weekend morning. Move on to practice at heavier traffic times when your teen is ready.

Lesson one – steering technique

Once on the highway, coach your teen on steering technique. At fast highway speeds, excessive steering can be dangerous and lead to loss of control. Remind your teen to steer gently on highways.



Lesson two – lane changing

In the high-speed, complex highway environment, lane-changing skills are very important. Have your teen spend several miles practicing the lane-changing and passing skills previously learned in “Skill nine: multi-lane roads,” until they are comfortable performing them at highway speeds. Remind your teen to:

- Watch for merging vehicles and move one lane left to make space for them when needed.
- Change lanes one at a time only.
- Watch mirrors for tailgaters and move to another lane to let them pass.

For the first several lane changes you may need to talk your teen through the decision-making process. Double-check all mirrors to make sure that the lane is clear.

Lesson three – three-second rule

Review the three-second rule for following distance, learned in “Skill six: looking ahead.” Additionally, coach your teen to use a three-second rule for these highway driving circumstances:

- Merging onto a highway
- Changing lanes
- Exiting a highway

Lesson four – challenging road conditions

Coach your teen to adjust travel speed and vehicle position based on weather and road conditions. Once your teen is comfortable with and proficient at highway driving in good conditions, spend some practice time on highways under more challenging conditions, such as rain. Coach them to always use appropriate caution, as conditions can change quickly.

Lesson five – road trips

Consider planning some short day trips with your teen to a destination two to three hours away. Have them drive there and back. Find an event or place that you will both enjoy and have fun.

Focal point

Early in the training process, parental instruction tends to focus on vehicle handling. As your teen’s skills improve, try to focus on “higher order” instruction, such as scanning ahead, hazard detection, and anticipating the other driver’s behavior.

Skill completed

supervisor initials

driver initials

#RoadReady

Roundabouts

Goal: Teach your teen how to enter and drive roundabouts safely.

Location: A road that leads to a one-lane roundabout. Move on to practice at two or more lane roundabouts when your teen is ready.

Roundabouts are circular intersections designed to calm traffic, increase safety, reduce stop-and-go travel, and decrease traffic delays. They were introduced into Colorado in the late 80s in Colorado Springs (see www.Colorado.DOT.info/Projects/Roundabout-History). Since then, roundabouts have proven to be an efficient means to move traffic through congested intersections and have shown to reduce accidents by half (all but eliminating the more severe broadside and head-on collisions). Roundabouts also offer a safe environment for pedestrians, who only have to navigate one-way traffic flow.

Driving in a roundabout can be intimidating, but it's really quite simple when you know how it works.

Lesson one – five easy steps

- **Slow down:** Speeds of 15 mph or less are adequate in the roundabout.
- **Yield:** Vehicles must yield to the left before entering a roundabout.
- **Entering:** Never stop once inside the roundabout. The vehicle in the roundabout has the right of way.
- **Destination signs:** Look for destination signs and exit in that direction.
- **Exiting:** Look to your right, check your mirror and use your turn signal

Lesson two – yield to emergency vehicles

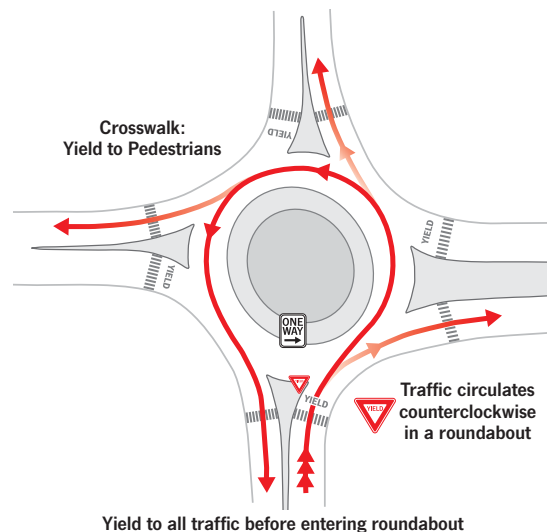
- If you have not entered the roundabout, pull over and allow emergency vehicles to pass.
- If you have entered the roundabout, continue to your exit, then pull over and allow emergency vehicles to pass.
- Avoid stopping in the roundabout.

Lesson three – two or more lane roundabouts

- As you approach, observe the signs and arrows to determine which lane to use before entering.
- Black and white signs on the side of the road and white arrows on the road will show the correct lane to use.
- If you want to make a left turn, stay in the left lane or other lanes that are signed and marked as a left turn.
- To make a right turn, stay in the right lane or other lanes that are signed and marked as a right turn lane.
- If you want to go straight, observe the signs and arrows to see what lane is correct.

Yield the right-of-way

As a rule of thumb, when entering or driving a roundabout, always yield to traffic on your left.



This example shows the traffic movement patterns through a one-lane roundabout. The one-lane roundabout is known as one of the safest and most efficient intersections.

Skill completed

supervisor initials

driver initials

#RoadReady

Adapting to new landscapes

Mountain driving

Some hazards you should be aware of are steep hills, changing weather, wildlife, and rocks in the roadway. If your vehicle experiences difficulty traveling up steep roadways, pull off the road at the first place you may do so safely, or stay in the right lane to allow other vehicles to pass. Here are some added tips:

- Pay special attention to speed limit signs and warning signs, such as those warning of curves, steep hills, or other hazards.
- Watch for bicyclists near the right edge of the road.
- Use lower gear to control speeds while going up or down long, steep hills.
- You must yield to vehicles going uphill if you are traveling downhill on a narrow road.
- Do not coast downhill by shifting into neutral or disengaging the clutch.

The higher the altitude, the less oxygen there is in the air. Some people may react to the decrease in oxygen. They may develop mild symptoms, such as headache, nausea, and fatigue. Remember, insufficient hydration can lead to the onset of symptoms of altitude sickness. Even if they are mild, they can affect your alertness as a driver.

Rural driving

When driving in rural or country areas, there are a number of special situations that require attention. Watch for driveways, farm equipment, railroad crossings that might not be marked, and bridges that are narrow and poorly surfaced. Some intersections may be hidden by trees, brush, and crops. Animals often are found wandering along the roadway. Extra care and slower speeds should be used when driving on gravel roads because of the reduced traction due to the road surface. The road surface can be affected by loose gravel, slippery conditions after rain or snow, ruts in the driving lanes, and washboard conditions. When approaching oncoming vehicles, watch for soft shoulders or the absence of shoulders.

Safety around snowplows

Colorado Department of Transportation (CDOT) snowplows use distinctive amber and blue lights to warn you that snow removal operations are underway. When you see these lights, slow down and use caution.

- **Give snowplows room to work:** The plows are wide and can cross the center line or shoulder.
- **Do not tailgate and avoid passing, especially on the right:** If you must pass, be extremely cautious and beware of the snow cloud.
- **Keep your distance and watch for sudden stops and turns:** A snowplow operator's field of vision is restricted. You may see them, but they don't always see you.

Note: Four-wheel drive (4WD) vehicles do not stop faster on ice and snow than two-wheel drive (2WD) vehicles. The heavier the vehicle, the longer it takes to stop, no matter how many drive wheels.

Course of action

After becoming proficient in basic driving skills, teens can become overconfident and begin to drive faster, follow other cars more closely, brake abruptly, etc. Gently and continuously remind your teen to stay three seconds back from other vehicles and always drive with caution.

Continuing education

Learning doesn't stop when your teen has received their license. It's important to continue teaching and building upon the skills they have learned. As you continue the supervision process, think about these three areas of focus:

- **Spend as much time as possible driving** with your teen.
- **Drive in a wide variety of conditions** (weather, time of day, different traffic volumes, etc.).
- **Focus on "higher level" learning:** scanning ahead, recognizing hazards, and learning to anticipate the behavior of other drivers.

Inspire

Even after your teen is licensed, use your time driving with them to instill habits of good judgment, accurate hazard anticipation, and smart decision-making.

Now that your teen has become proficient in the basic operational skills of driving, it is essential that you ensure they be exposed to a wide variety of driving circumstances and conditions. Make a point of finding circumstances to drive with them that they have not yet experienced, and do it for all types of roads – quiet neighborhood streets, multi-lane roads, and highways. Drive with them at different times of the day, in poor weather, and with varying levels of traffic. It's much better that they experience these conditions with you, rather than alone or with other teens.

Much of what has been discussed to this point has related specifically to the basic skills your teen will need to be a safe driver. Now, your goal is to ensure your teen is thinking intelligently and making the right decisions as a driver. Sometimes after teens become proficient with the basic skills, parents/guardians will often "step back," becoming less involved in their teen's supervision. But there's still a lot to learn; their teen's education is not complete.

Be clear with your teen that the training process is ongoing and that you will continue to provide input into their development so that you both stay in the learning/teaching mode.

Even the best new drivers are likely to make mistakes. These mistakes are great teachable moments for "higher order" instructions. So instead of saying, "Stop sooner," advise your teen to try to focus on looking ahead and anticipating events, with an emphasis on good judgment, good decision making, and hazard perception. The shift from a basic comment to a more advanced focus is perhaps the most essential element of educating your teen at this point in the learning process.

As your teen drives, talk to them about specific hazard areas, possible areas of conflict, and blind spots where trouble may hide. Teens tend not to be as good at anticipating these trouble areas as experienced drivers. A good exercise is to have your teen describe the blind spots and possible areas of conflicts they see. It will let you know that they are thinking, anticipating, and driving intelligently.

Practice in other conditions

For new drivers, it can be challenging to drive in new and unfamiliar conditions. It's best that you provide guidance before they experience these conditions on their own.

Night driving

A driver's reaction depends on their vision, which is limited at night. Some tips to keep in mind:

- Glare from oncoming headlights makes it difficult to see. To avoid being temporarily blinded, you should look ahead toward the right side of the road.
- Headlights should be turned on before the sun goes down to make the car more visible.
- High beams should only be used when other drivers won't see them, such as on isolated roadways with little traffic.
- To compensate for reduced visibility, drive more slowly and at a greater following distance.

Wet/slippery roads

To reduce risk on wet and slippery roads, coach your teen to practice the following:

- Turn on the wipers as soon as the windshield becomes wet.
- Turn on the low-beam headlights; this helps others see you.
- Drive 5–10 mph slower than normal and increase your following distance to five or six seconds.
- Be more cautious, and slow down on curves and when approaching intersections.
- Turn the defroster on to keep windows from fogging over.

Hydroplaning

Hydroplaning occurs as a result of water on the road that is deeper than the tire tread. This layer of water reduces friction with the tires and can result in the loss of control. If you can see deep water on the road, reflections on the pavement, or the car ahead leaves no tracks on the water, these are indications your car could hydroplane. Slow down.

Fog

Use low-beam lights or fog lights if your vehicle has them. Don't use high-beams – they reflect off the fog, causing glare and reduced visibility. Slow down until your speed matches your ability to see, even if it means slowing to a crawl.

Snow

Make sure your vehicle is clear of snow and ice before driving. Driving can cause snow/ice to slide and block your view, or fly off and strike other vehicles. Other tips to keep in mind:

- When starting to drive in snow, keep the wheels straight ahead and accelerate gently to avoid spinning the tires.
- Decrease your speed to make up for a loss of traction. Accelerate and decelerate gently, and be extra careful when braking.
- Stopping distances can be 10 times greater in ice and snow. Begin the slowing-down process long before anticipating a stop at an intersection or turn. Brake only when traveling in a straight line.
- Look ahead for danger spots, such as shaded areas and bridge surfaces that may be icy when the rest of the road is clear.
- When driving uphill, stay far behind the vehicle ahead so you will not need to come to a sudden stop, which can cause skidding.

Alertness

Talk to your teen about travel resources to help them know the conditions they might face before heading out on the road. Colorado drivers can visit www.COTrip.org or call 5-1-1 to get the latest road conditions or to learn about road construction or closures.

Teens' biggest dangers

Newly licensed teens crash much more often than older, more experienced drivers. These are the circumstances that are the most common trouble areas for young drivers.

Other teens

Research is clear on the fact that risky teen driving behaviors increase in the presence of teen passengers. A teen who is driving with other teens in the car is more likely to crash. And the more kids there are in the car, the stronger the likelihood of a crash. This is the primary reason many states have passed laws that restrict the ability of teens to drive with their peers.

GDL systems

Graduated Driver Licensing (GDL) systems are intended to provide teen drivers with practice under the safest conditions, exposing them to more situations only as their skills and experience grow.

Seat belts

The unfortunate reality is that teens buckle up far less frequently than adults. Recent studies show that belt use amongst teens is the lowest of any age group, just 76 percent compared to a national average of 85 percent. In fact, the majority (58 percent) of young people 16 to 20 years old involved in fatal crashes are unbuckled.

Drugs and alcohol

Teens are at far greater risk of death in an alcohol-related crash than the overall population. This is despite the fact they cannot legally purchase or publicly possess alcohol in any state. When alcohol is added to the inexperience of teen drivers, the results can be deadly. Drunk male teenage drivers are 18 times more likely than a sober male teen driver to be killed in a single-vehicle crash. Drunk female teenage drivers are 54 times more likely to be killed than a sober counterpart.

Fatigue

As teens get older their bedtimes get later, but waking times do not tend to change. From age 13 to 19, nightly sleep is reduced by 40–50 minutes. Teen drivers who sleep less than 8 hours a night are 33 percent more likely to crash than teens who get more than 8 hours of sleep. This lack of sleep results in depressive moods, more risk-taking behaviors, and lower grades. It further reduces a person's ability to process information, be attentive, and have good reflexes, which are all crucial to driving skills. Studies have shown that being awake for 18 hours has a similar impact to having a blood alcohol concentration (BAC) level of 0.08.

Distracted driving

A driver's primary responsibility when behind the wheel is to focus on the act of driving. Any behavior that distracts from that activity increases the risk of a collision. In this age of electronic communication, the dangers of distractions have increased significantly. Use of electronic devices for any purpose, to send or receive communications, to surf the web, to view images, video, or anything at all, should absolutely be avoided.

Inexperience

Just as it takes years to perfect any skill – athletic, artistic, or otherwise – it also takes years to be a truly good driver. Until teens are much more experienced, they run a greater risk of crashing, being hurt, and potentially dying. A driver's license makes them a driver. Experience makes them good drivers.

Night driving

For teens, the most severe crashes occur at night and on weekends. Night driving is challenging for all drivers, but novice drivers do not have the experience to anticipate and react when visibility is reduced. When teens drive at night, it is more often with a lack of adult supervision, with other teen passengers, and at high speeds – all of which increase risk.

Sharing the road

Sharing the road means being a courteous, alert and knowledgeable driver, making the roads safer for all. Bicycles, motorcycles, buses, trucks and pedestrians all deserve a share of the road.

Bicycles and Motorcycles

Motorists must be on the lookout for bicycles and motorcycles and anticipate sudden and unexpected moves from them. Motorcycles are entitled to the same full lane width as other vehicles.

Bicycles and motorcycles are smaller, harder to see and can move faster and stop faster than expected. Their control is more easily hampered by road defects and debris. You should watch for bicycles and motorcycles, use extra caution when driving around either and increase your following distance.

Pedestrians

Pedestrians are those people standing, walking or using a wheelchair on public streets, highways and private property. Pedestrians have the right-of-way at crosswalks and intersections whether the crosswalks are marked or not.

Trucks

If you cut in front of another vehicle, you may create an emergency-braking situation for the vehicles around you, especially in heavy traffic. Trucks and buses take much longer to stop in comparison to cars. When passing, look for the front of the truck in your rearview mirror before pulling in front, and avoid braking situations.

Large trucks have blind spots, or “no-zones”, around the front, back, and sides of the vehicle. These No-Zones make it difficult for the driver to see. Avoid being caught in a truck’s no-zone. If you can’t see the truck driver in the truck’s mirror, the truck driver can’t see you.

Be careful of trucks making wide right turns. If you try to get in between the truck and the curb, you’ll be caught in a “squeeze” crash. Truck drivers sometimes need to swing wide to the left in order to safely negotiate a right turn. They can’t see cars directly behind or beside them. Cutting in between the truck and the curb increases the possibility of a crash. So pay attention to truck signals, and give them lots of room to maneuver.

Work zones

Work zones can be very dangerous, especially when traveling on the highway. It’s important to be alert and prepared to slow down or stop in a work zone. Slowing down and allowing others to merge will ensure a safe passage through work zones. Here are a few tips on work zone safety:

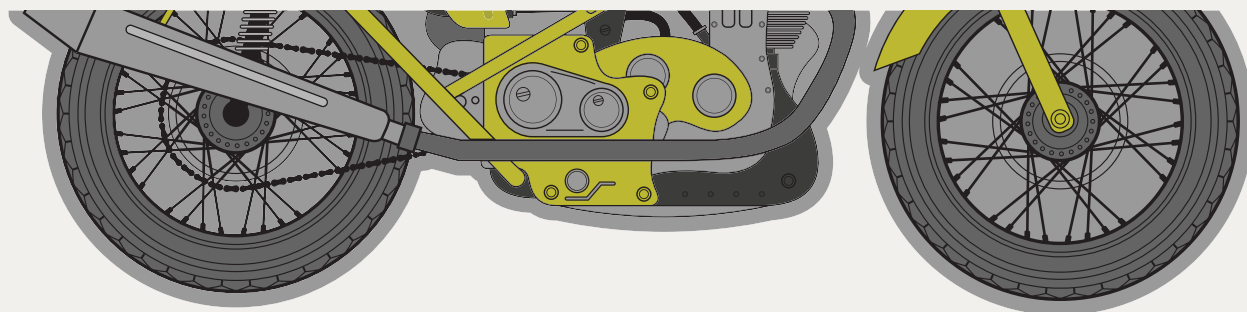
- **Stay alert:** Work zones are busy places where construction vehicles and workers are always moving. Be alert, and stay on the safe path that is designated throughout the work zone.
- **Take your cues from trucks:** Work zones often pop up suddenly. If you are not paying attention to the signs, you could find yourself in a serious accident. Since trucks have a height advantage and can see ahead of traffic, their brake light activity can provide a good signal of a slow-down or work zone ahead.
- **Merge gently:** Aggressive drivers can be extremely dangerous while driving in work zones. Work zones require time and courtesy. For a smooth passage through work zones, allow others to merge in front of you. Be especially considerate to trucks. They require more space to merge and are the least maneuverable vehicles on the road.

Source: U.S. Department of Transportation, Federal Motor Carrier Safety Administration

Emergency vehicles

When you hear sirens and see flashing lights, you should get out of the way as quickly and safely as possible. First, check the traffic around you and slow down. If traffic allows, signal and then pull to the right, clear of an intersection, and stop. Remain there until the emergency vehicle has passed.

CHECK TWICE *For* MOTORCYCLES



COLORADO
Department of Transportation



MOVING TOWARDS
ZERO
DEATHS

This image shows a single sheet of white paper with horizontal ruling lines. The lines are evenly spaced and run across the width of the page. There are no margins, text, or other markings on the paper.

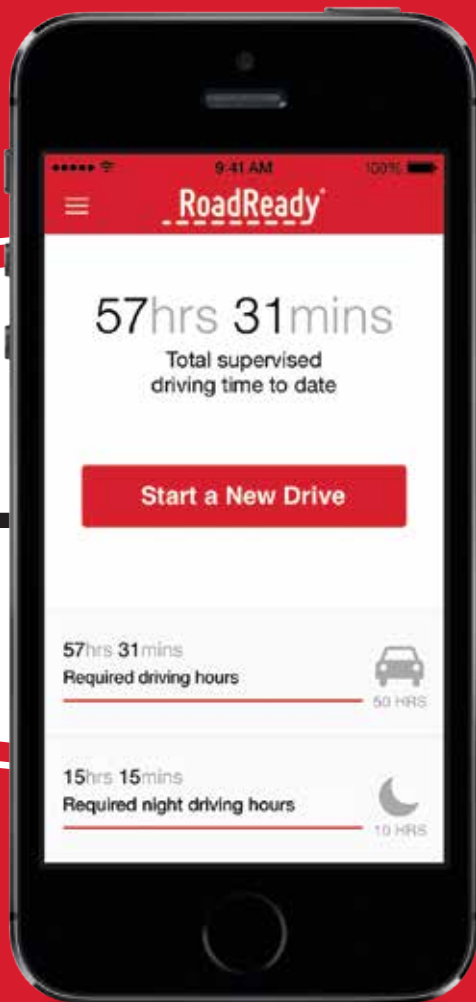
[illegible]

**YOU DON'T WANT
THEM RESPONDING
TO YOUR TEXT.**



STOP TEXTS STOP WRECKS.ORG





@PSDP_Info thank you!

I love this app so much.

- Twitter Follower

RoadReady®

A component of

the **PARENT'S** 
supervised driving program

Download our FREE mobile app
to log your Learner's Permit practice driving.

-- SMART

Log your drives, including your location, your driving conditions (road type and weather), your state requirements & more.

-- SOCIAL

Share drives and accomplishments with friends on social networks with RoadReady's social sharing options.

-- SYNC

Connect one teen driver's practice drive time across multiple phones by using the same log-in on each device.

With Support From



Download on the
App Store

LEARN MORE AT ROADREADYAPP.COM

Apple, the Apple logo and iPhone are trademarks of Apple Inc., registered in the U.S. and other countries. App Store is a service mark of Apple Inc.