

## **FIGURE 8 LOOP APPLICATION EXAMPLE**

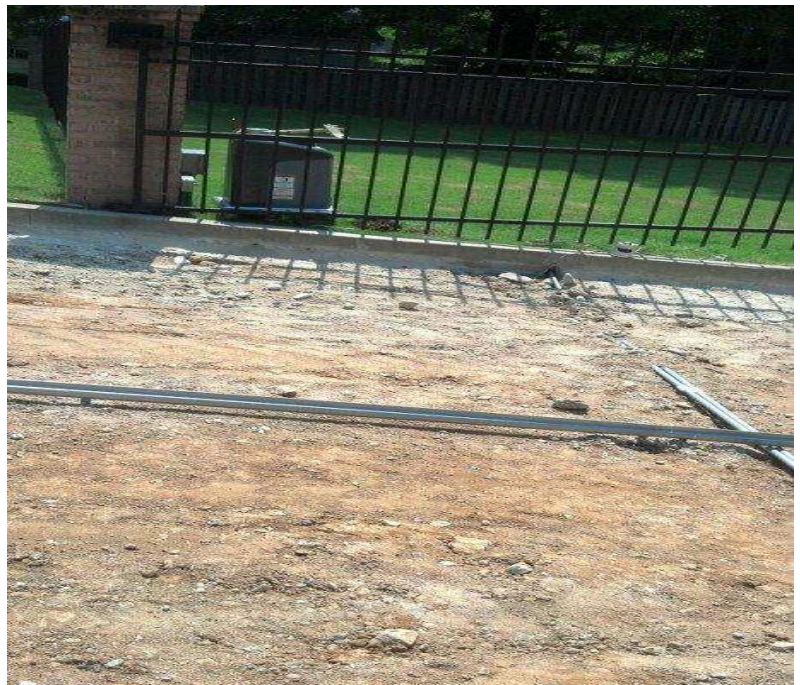
This is a pictorial example of how the use of a figure 8 loop configuration could cure an issue where an AC power conduit is running through an area where a loop needs to be placed.



Entrance view of the jobsite.

Before Picture

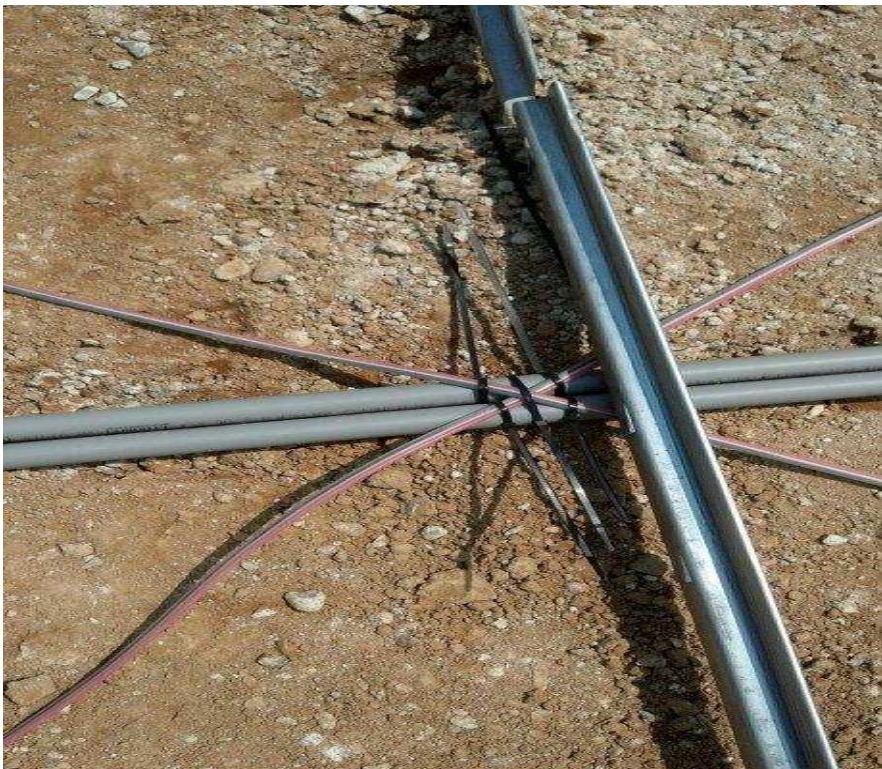
You can see where the AC conduit is traveling across the driveway in the path of where a shadow loop needs to be installed. There is a metal strip running down the middle of the driveway.



## **FIGURE 8 LOOP APPLICATION EXAMPLE (CONT.)**

The figure 8 loop laid out in the driveway.

Note that the loop is laid out where it is equal in size on both circles of the figure 8. The theory is the noise induced on one side of the loop is cancelled because it is 180 degrees out of phase from the other side of the loop.



This is the crossing point of the figure 8 perform loop. Note that it is securely tied to the conduit which during the concrete pour it will not move.