



**STELCOR** DRILLED-IN DISPLACEMENT MICROPILES

# PROJECT SUMMARY

## GEOTECHNICAL DESIGN & CONSTRUCTION

### Project Overview:

CMI was contracted to install 150- Stelcor Micro-piles consisting of a 5.5" main shaft, 16" bearing plate and high strength grout for supporting a new 4-story apartment building.

The Piles were installed to 29' with a 40 ton working load and statically load tested to 80 tons.



**STELCOR** DRILLED-IN DISPLACEMENT MICROPILES



# PROJECT SUMMARY

## GEOTECHNICAL DESIGN & CONSTRUCTION

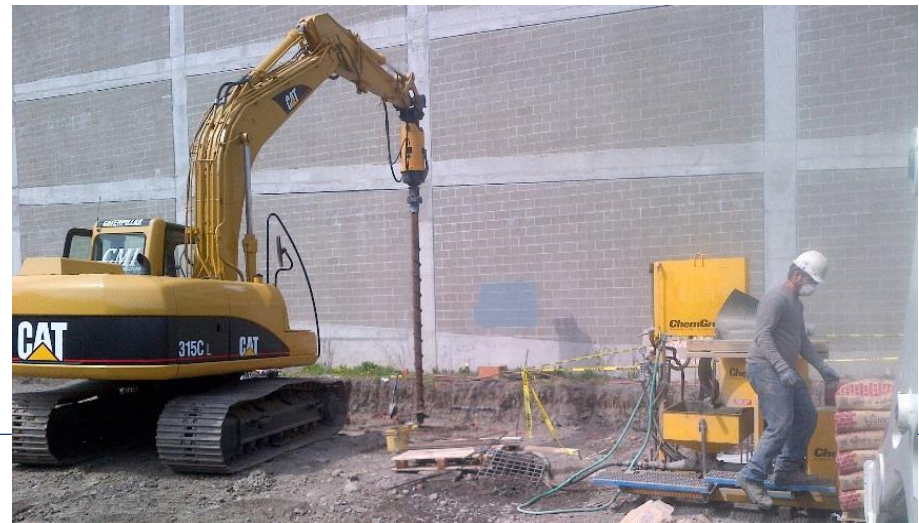
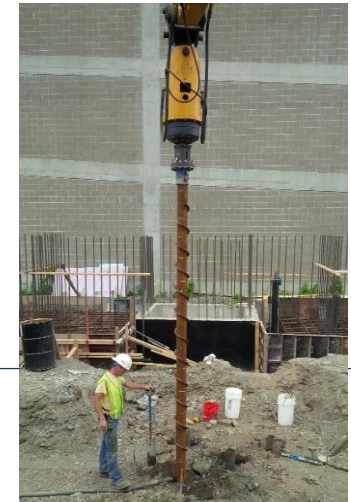
### Equipment:

315 CL CAT Excavator, Pro-Dig T40K  
Planetary Drive, ChemGrout CG-  
550/030/GHES Grout Plant, Bobcat T-  
770



### Benefits:

- Using the Stelcor system eliminated the need to haul spoils which was very important on this tight site.
- No Vibrations or Pounding means they can be installed in noise sensitive areas. (Hospitals, Schools, Offices etc.)
- Fast project completion- depending on pile depth, up to 20 Stelcor Piles can be installed in one day.



# STELCOR® DRILLED-IN DISPLACEMENT MICROPILES

Ontario, NY (315) 524-4780