

210' DOCK INSTALLED ON LAKE ONTARIO



- *Commercial*
- *Municipal*
- *Industrial*

Project Overview:

CMI was contracted to provide a Pile System and a Structural concrete slab for a new fishing dock on Lake Ontario. After installing Ideal Helical Piles down to rock, LiteDeck panels were installed and a reinforced concrete slab was poured!

Scope of Work:

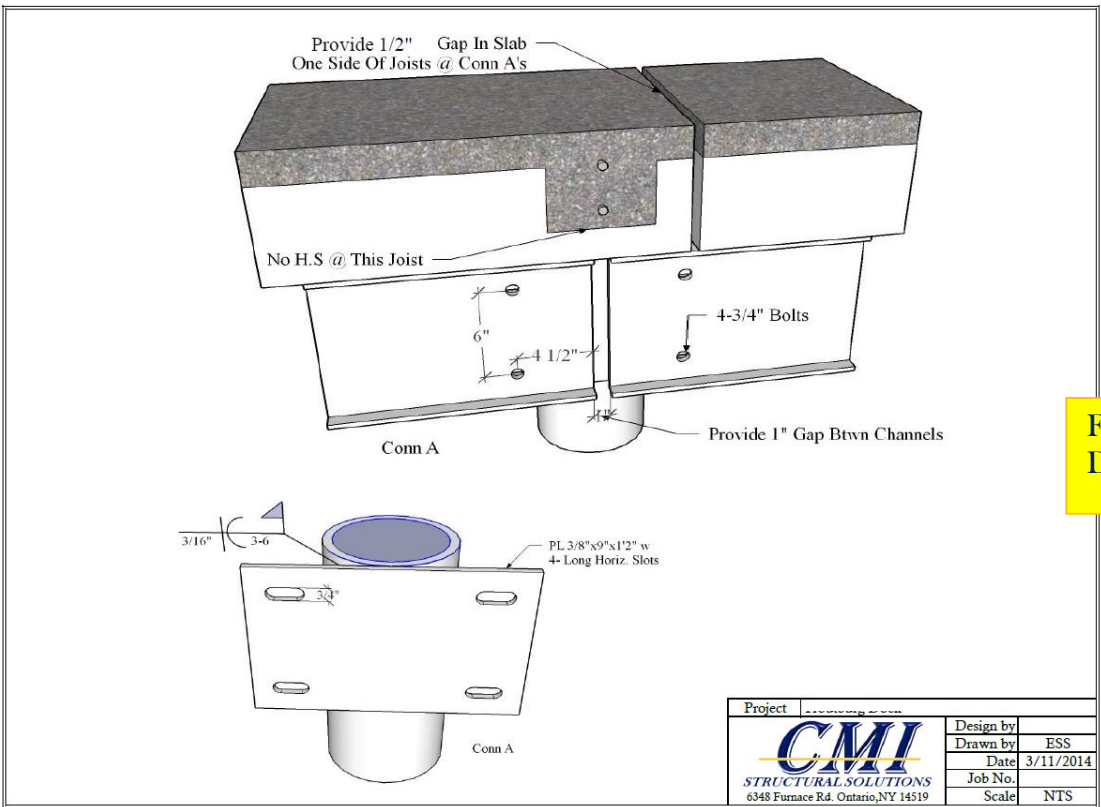
CMI installed 46- IDEAL Foundation Systems Helical Piles consisting of a 7" pile shaft with a 16" helix.

Piles were installed down to rock, at an approximate depth of 15 feet below top of dock.

A C-Channel frame was welded to the piles to support the LiteDeck forming system.

Rebar was installed and concrete was poured to finish the dock.





**Final Engineered
Design Plans**



Install LiteDeck™ Floor
Slab System....and pour
concrete



**6348 Furnace Rd.
Ontario, NY
14519**

(315)524-4780