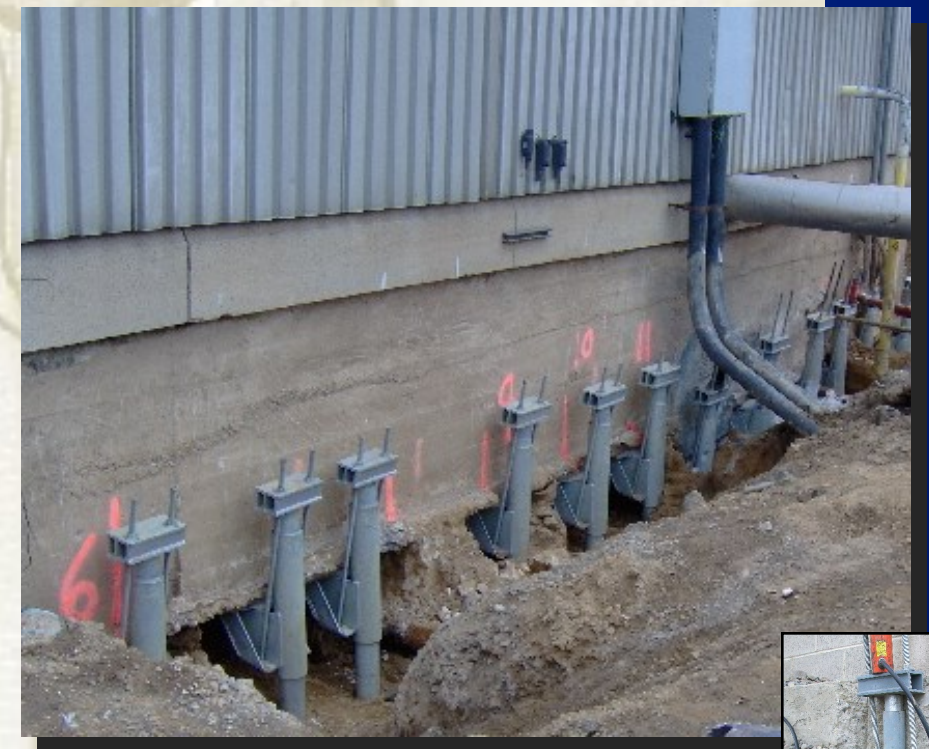


COUNTERFORCE™

Underpinning Systems

We at CMI have the ability to provide you with state-of-the-art foundation systems. Whether you are looking to lift and stabilize a sinking structure, or support a floor slab, CMI meets the design requirements to get the job done. Our many years of experience in successfully completing challenging projects makes us uniquely qualified to meet our customers' needs with helical pile technology. Contact CMI today for installation services and value engineering for your next project.

FOUNDATION SYSTEMS™



Counterforce can be installed in any weather conditions!



- > Vibrationless installation
- > No spoils to remove
- > Excellent lateral stability
- > From 10 ton to 50 ton loads!
- > Excellent solution for tight access and low headroom requirements



The Leading Edge In Underpinning Technology

Certified Installers of

