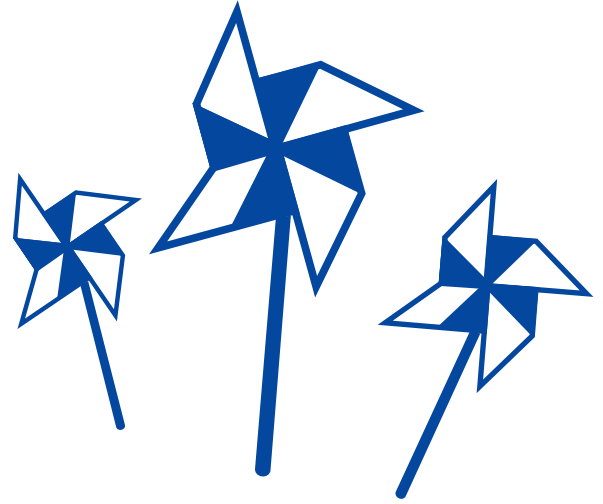


# Make A Pinwheel

**Make your own pinwheel by following these simple directions:**

## **You will need:**

- a push pin
- a square piece of construction paper (about 8.5" x 8.5")
- a sharpened pencil with eraser
- scissors



## **How to make a pinwheel:**

1. Lay the square paper flat on a table and draw a line diagonally from each corner to the opposite corner.
2. Mark the center of the square where the two lines cross and punch a small hole through it with the pencil tip.
3. Next, cut along each line stopping about an inch from the hole in the center of the square.
4. Take the pin and punch a hole in the top left corner of each of the four flaps. (No two holes should be next to each other.)
5. Pick-up a flap at a punched corner and carefully curve it over toward the center hole, securing it with the pin.
6. Repeat this for the other flaps.
7. When all four flaps are held by the pin, carefully lift the paper without letting the flaps unfurl.
8. Lay the pencil flat on a table and carefully push the point of the push pin into the side of the eraser.

**Now you are ready to try-out your beautiful pinwheel!**

**Blue pinwheels became the national symbol in 2008**

**for Child Abuse Prevention as it represents a reminder of the innocence of childhood.**