



## Product Data Sheet

### Product Name:

Series "WS" Wet Seal ACM Panel System

### Manufacturer:

Columbia Architectural Products, Inc.

10722 Tucker Street

Beltsville, Maryland 20705

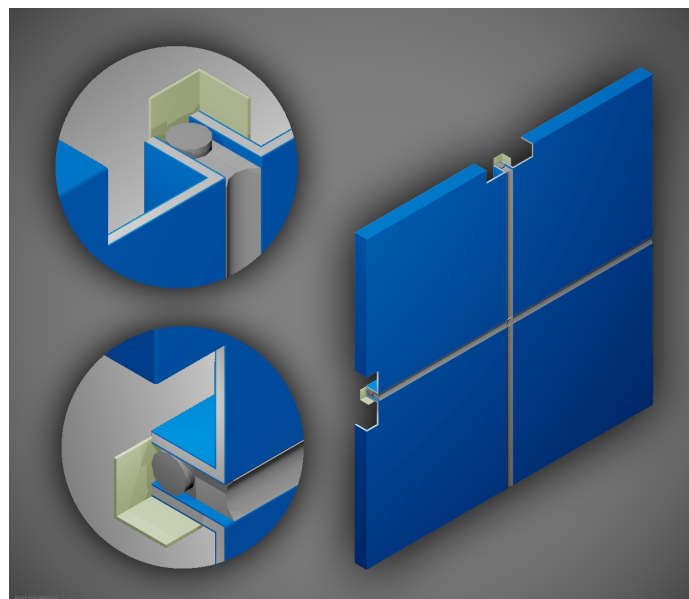
phone: (301) 937-4383

fax: (301) 937-6850

web: [www.CapIndustriesInc.com](http://www.CapIndustriesInc.com)

### Panel Description:

The Wet Seal panel system is by far the most cost effective building envelope system on the market today. An economical alternative to a rain Screen system is the CAP Series "WS" Wet Seal panel system. This requires a rod & caulk, staggered clip installation.



The CAP Series "WS" Wet Seal panel system is a rod & caulked ACM panel. The system has a typical overall depth of 1" and a caulk joint width of 1/2". Both the System depth and caulk joint width can vary to suite your aesthetic requirements. This system consists of "V" grooved panels that are folded into pans and attached to the building facade with factory supplied angle clips. This has proven to be a very successful system on a wide range of ACM Wet Seal applications.

PROPERTY	TEST	UNITS	4mm FR core	4mm LDPE core
Thickness	-	mm	4.0	4.0
Weight	-	lb/ft <sup>2</sup>	1.47	1.12
Temperature Range	-	°F	-55 to +175	-55 to +175
Bond Strength	ASTM D1781	ln/lb/in	≥22.5	≥22.5
Core Density	ASTM D792	Lb/in <sup>3</sup>	5.42 x 10 <sup>-2</sup>	3.32 x 10 <sup>-2</sup>
Coefficient of Expansion	Based on Aluminum skins	Mm/mm/°C In/in/°F	2.36 x 10 <sup>-5</sup> 1.31 x 10 <sup>-5</sup>	2.36 x 10 <sup>-5</sup> 1.31 x 10 <sup>-5</sup>
Flame Spread Index	ASTM E84	-	Pass = Class A	Pass = Class A
Smoke Developed Index	ASTM E84	-	Pass = Class A	Pass = Class A
Intermediate Scale Multi-Story Test	NFPA285	-	30 minutes passed	-
Interior Room Corner Burn	UL 1715	-	15 minutes passed	-
Fire Test of Building Construction Materials	ASTM E119	-	1 Hour passed	-
Flexural Evaluation	ASTM D7249	psi	9.879 x 10 <sup>6</sup>	10.107 x 10 <sup>6</sup>
Metal Skin Specifications	ASTM B 209	-	3000 Series	3000 Series
Metal Skin Ultimate Tensile Strength	ASTM E8	psi	≥ 23	≥ 23
Metal Skin Yield Strength	ASTM E8	psi	≥ 19	≥ 19
Metal Skin Thickness	-	in	Nominal 0.020	Nominal 0.0.20
Metal Skin Finishes	-	-	70% PVdf	70% PVdf
Core Material Specifications	-	-	Polymer w/ fire retardant filler	Polyethylene

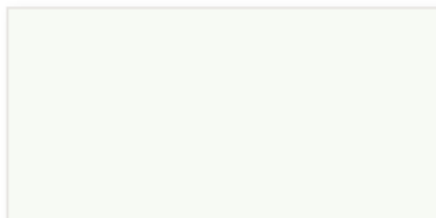


## 30 Year Architectural Coatings

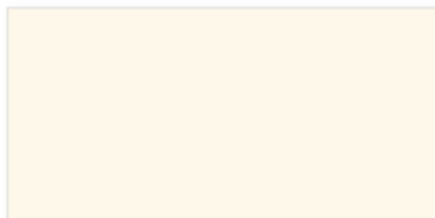
**larson®** by Alucoil® ACM is coil coated utilizing DURANAR® coatings from PPG. Backed by a 30-year exterior performance warranty, these (PVDF) fluoropolymer paint finishes contain 70% KYNAR® 500/ Hylar® 5000 resins and are formulated to meet or exceed industry performance requisites such as AAMA 620 and AAMA 2605. Our 29 standard colors are matched to a combination of popular ACM and steel foam panel colors – enabling greater flexibility and design choice.

### Solid Color Series

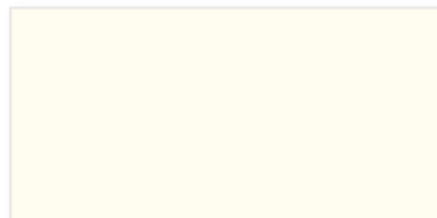
These *Duranar®* 2-coat colors consist of a 0.2 mil primer and a 0.8 mil color coat, for a nominal dry film thickness of 1.0 mil.



Regal White S-31



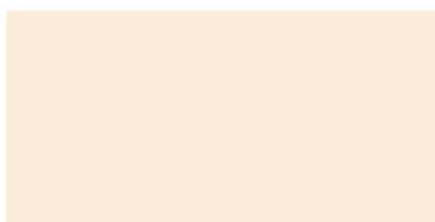
Off White S-91



Bone White S-30



RVW White S-327



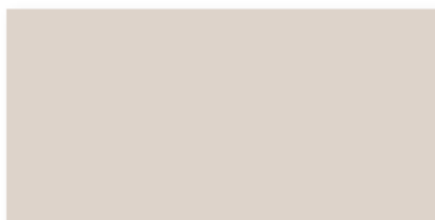
Oyster White S-70



Marble S-112



Sandstone S-84



Limestone S-58



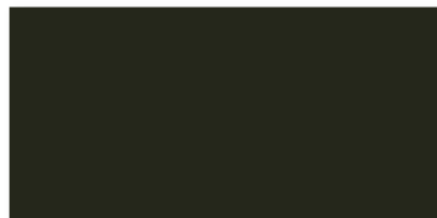
Cadet Grey S-32



Charcoal S-381



Classic Bronze S-33



Classic Black S-34



Marakesh Red S-48



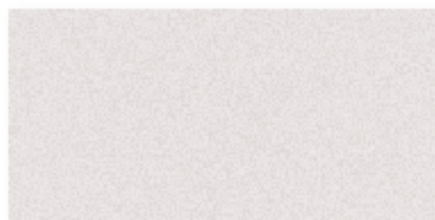
Deep Sea Blue S-74

#### Finished Panel Inventory: ACM and Matching Flat Sheet

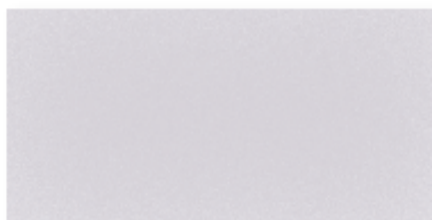
*All standard colors are available in 62" coil and inventoried ACM panels. Select colors are also available in 50" width. Matching 0.040" thick x 48" wide flat sheets are available in select standard colors. Please consult for finished goods inventory availability.*

## Mica Color Series

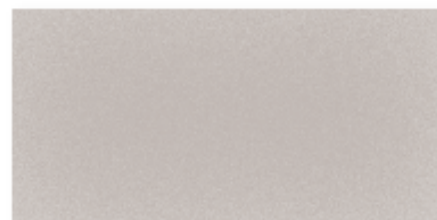
These *Duramar*® 2-coat mica colors consist of a 0.2 mil primer and a 0.8 mil color coat, for a nominal dry film thickness of 1.0 mil. Mica flakes are suspended in the color coat – giving the appearance of a metallic finish.



Anodic Clear M-35



Platinum M-36



Silversmith M-115



Champagne Mica M-38



Champagne Pearl M-60



Champagne Bronze M-94



Aged Bronze M-367



Pewter Mica M-366



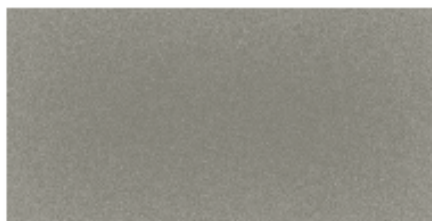
Medium Grey M-301

## Metallic Color XL Series

These *Duramar*® 3-coat metallic colors consist of a 0.2 mil primer, a 0.8 mil color coat, and a 0.5 mil clear coat, for a nominal dry film thickness of 1.5 mils.



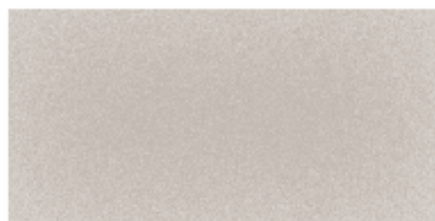
Silver Metallic XL-25



Gun Barrel XL-382



Pewter Metallic XL-65



Champagne Metallic XL-26



Rustic Copper Metallic XL-27



Bright Copper Metallic XL-28

**Mica and Metallic XL Colors** are directional in nature therefore proper estimating and installation precautions should be taken to ensure that panels are all installed in the same direction. Directional arrows are printed on panel protective film to aid in this practice.

Due to the reflectivity of these finishes, optical perception of color tone may vary according to the angle from which panels are viewed, reflected light off of other structures, and different angles or planes on which panels are installed on a building elevation.

To ensure color consistency with these finishes, it is highly recommended to order all material required at the same time, be they in single or multiple widths.



PPG Coatings Protected



MANUFACTURERS OF FINE ARCHITECTURAL PRODUCTS