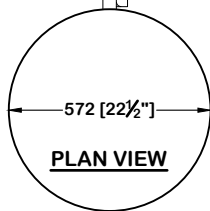
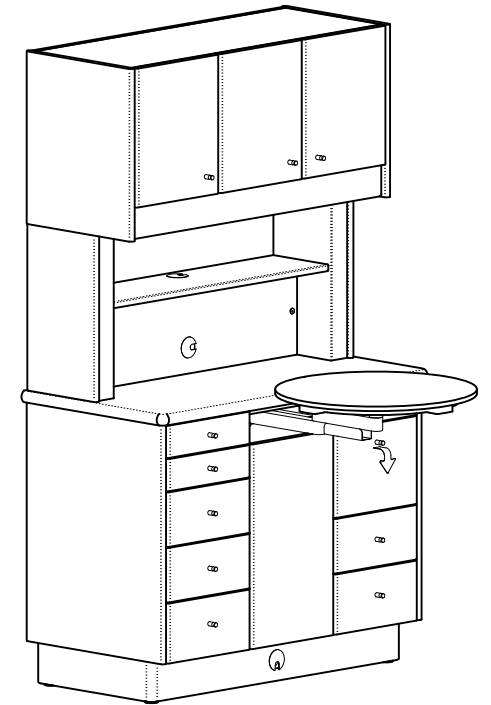
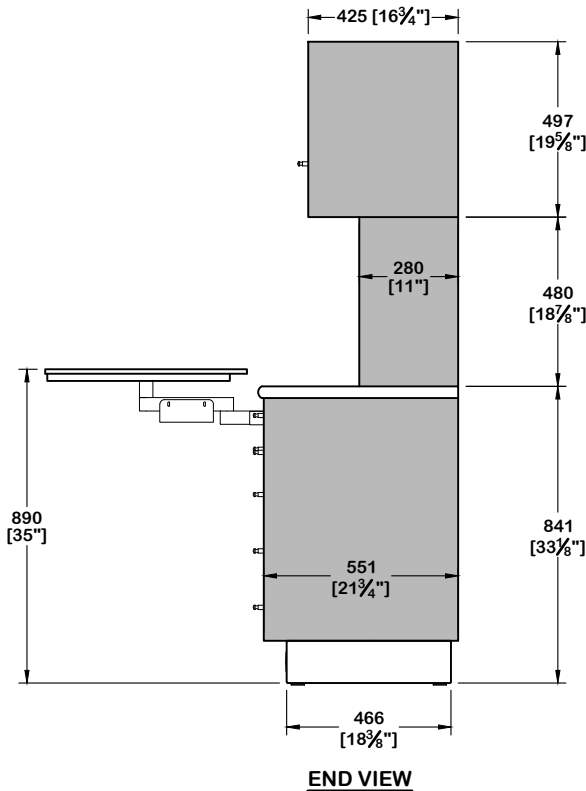
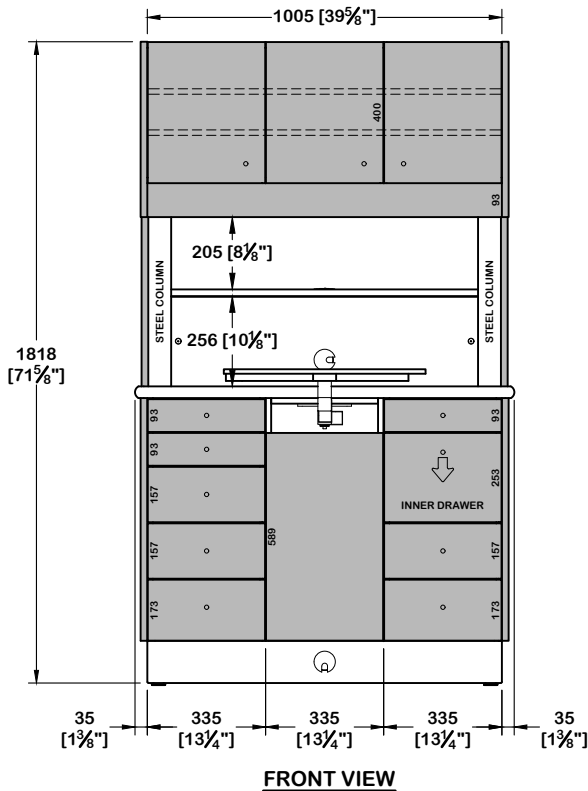


\*ALSO AVAILABLE IN 19" DEPTH



STANDARD REAR SUPPORT CONFIGURATION. SHOWN WITH WORK SURFACE OPTION '3' DUO SWING TABLE. PLEASE SEE RS-OPTION PAGES FOR NUMEROUS WORK SURFACE, HUTCH, AND BASE MODULE CONFIGURATIONS.

- ACCENT COLOR
- BASE COLOR

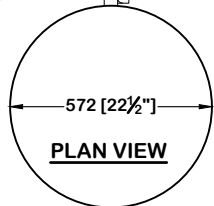


**ISOMETRIC VIEW**

SERIES:     SIGNATURE     MERIDIAN  
 DEPTH:     19"     23"  
 COUNTER:     SOLID SURFACE     LAMINATE     STONE    COLOR: \_\_\_\_\_  
 BASE COLOR: \_\_\_\_\_    ACCENT COLOR: \_\_\_\_\_  
 FINISHED BACK:     YES     NO    COLOR: \_\_\_\_\_     MONOTONE



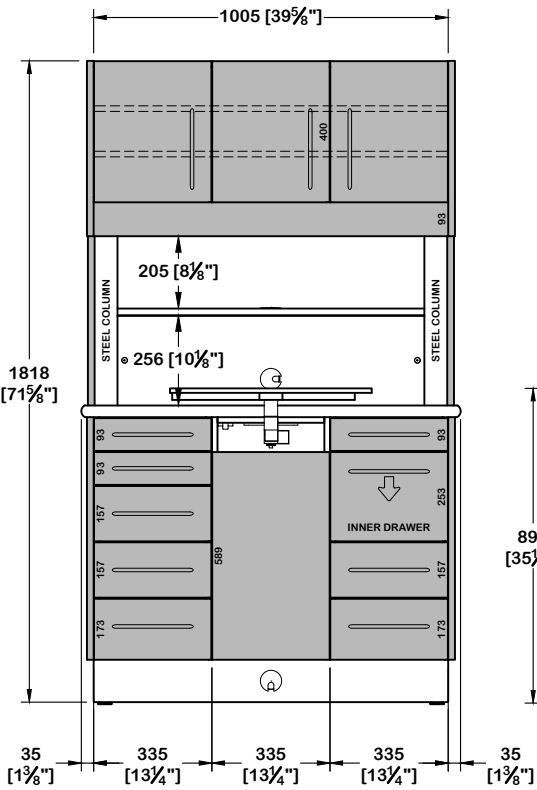
DRAWING DETAIL		DRAWING NAME	
REAR SUPPORT - 23" DEEP AGAINST WALL		<b>RS-23</b>	
DRAWN BY	DATE	SCALE	VIEW
MLW	05-JUL-18	NTS	AS SHOWN
COPYRIGHT NOTICE			
© Copyright of Bow Wood Dental Systems Inc. All Rights Reserved. No part of this drawing may be reproduced or distributed in any form without prior written permission from Bow Wood Dental			



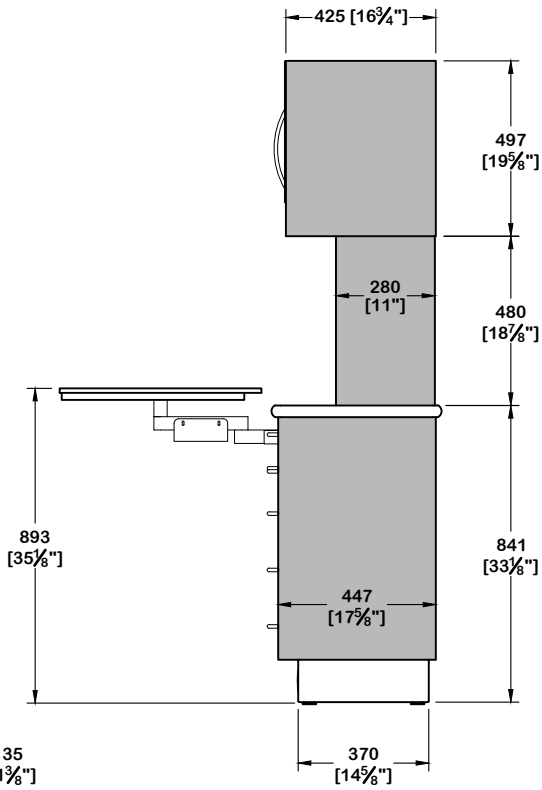
\*ALSO AVAILABLE IN 23" DEPTH

STANDARD REAR SUPPORT CONFIGURATION. SHOWN WITH WORK SURFACE OPTION '3' DUO SWING TABLE. PLEASE SEE RS-OPTION PAGES FOR NUMEROUS WORK SURFACE, HUTCH, AND BASE MODULE CONFIGURATIONS.

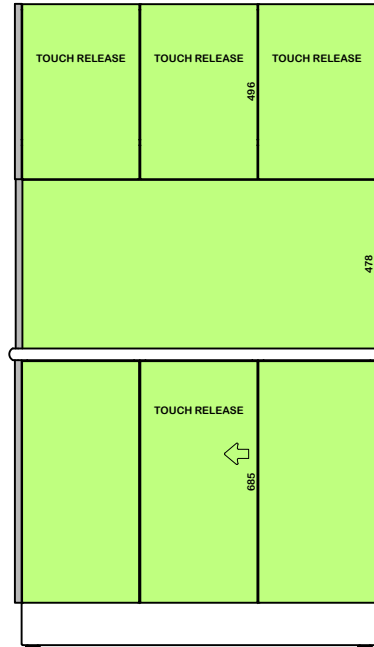
- ACCENT COLOR
- BASE COLOR
- FINISHED BACK COLOR



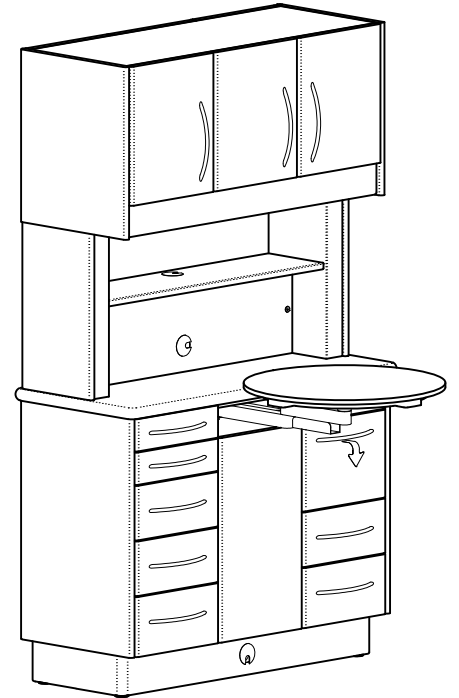
FRONT VIEW



END VIEW



BACK VIEW

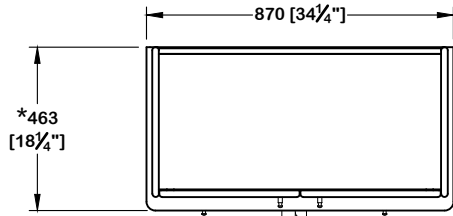


ISOMETRIC VIEW

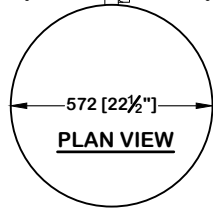
SERIES:     SIGNATURE     MERIDIAN  
 DEPTH:     19"     23"  
 COUNTER:     SOLID SURFACE     LAMINATE     STONE    COLOR: \_\_\_\_\_  
 BASE COLOR: \_\_\_\_\_    ACCENT COLOR: \_\_\_\_\_  
 FINISHED BACK:     YES     NO    COLOR: \_\_\_\_\_     MONOTONE



DRAWING DETAIL		DRAWING NAME	
REAR SUPPORT - 19" DEEP FINISHED BACK		<b>RS-19</b>	
DRAWN BY	DATE	SCALE	VIEW
MLW	05-JUL-18	NTS	AS SHOWN
COPYRIGHT NOTICE			
© Copyright of Bow Wood Dental Systems Inc. All Rights Reserved. No part of this drawing may be reproduced or distributed in any form without prior written permission from Bow Wood Dental			

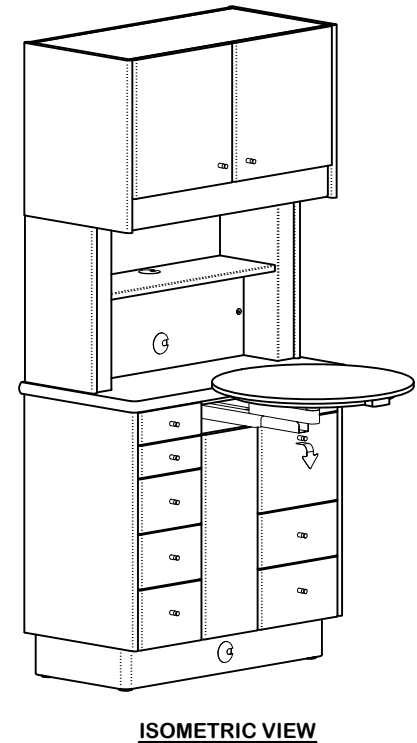
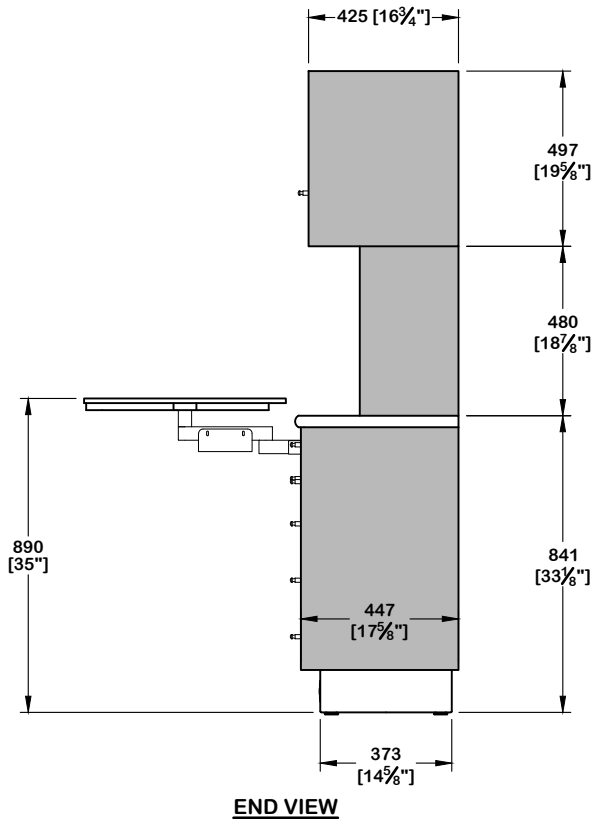
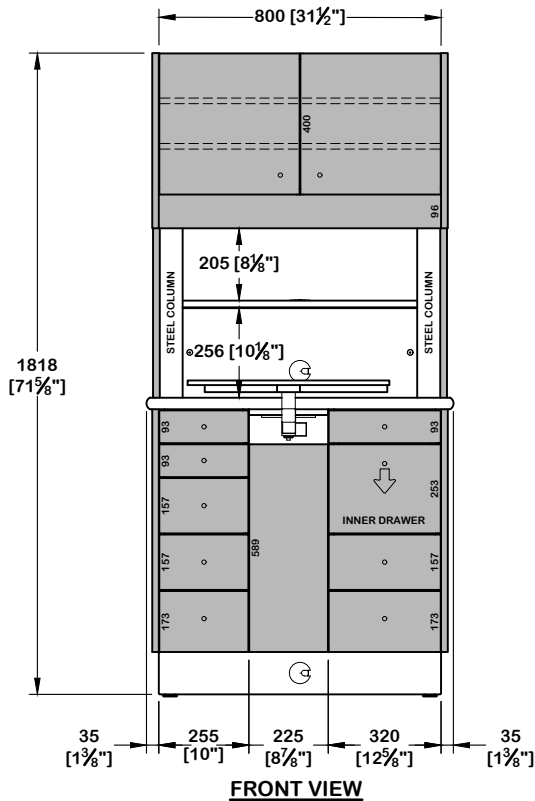


\*ALSO AVAILABLE IN 23" DEPTH



STANDARD REAR SUPPORT CONFIGURATION. SHOWN WITH WORK SURFACE OPTION '3' DUO SWING TABLE. PLEASE SEE RS-OPTION PAGES FOR NUMEROUS WORK SURFACE, HUTCH, AND BASE MODULE CONFIGURATIONS.

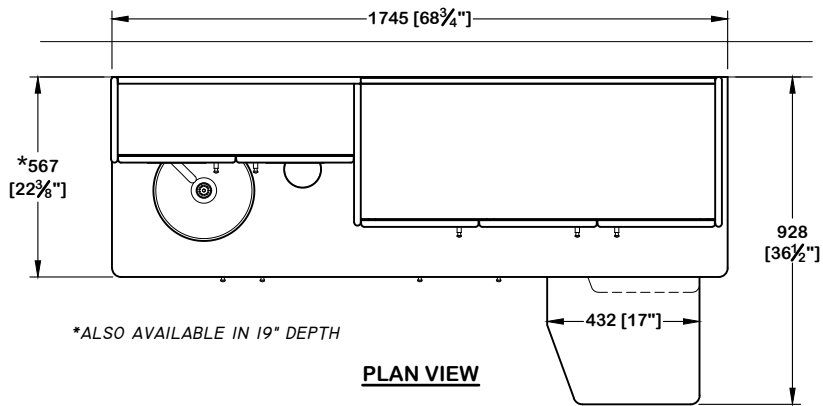
- ACCENT COLOR
- BASE COLOR



SERIES:    SIGNATURE    MERIDIAN  
 DEPTH:    19"    23"  
 COUNTER:    SOLID SURFACE    LAMINATE    STONE   COLOR: \_\_\_\_\_  
 BASE COLOR: \_\_\_\_\_   ACCENT COLOR: \_\_\_\_\_  
 FINISHED BACK:    YES    NO   COLOR: \_\_\_\_\_    MONOTONE

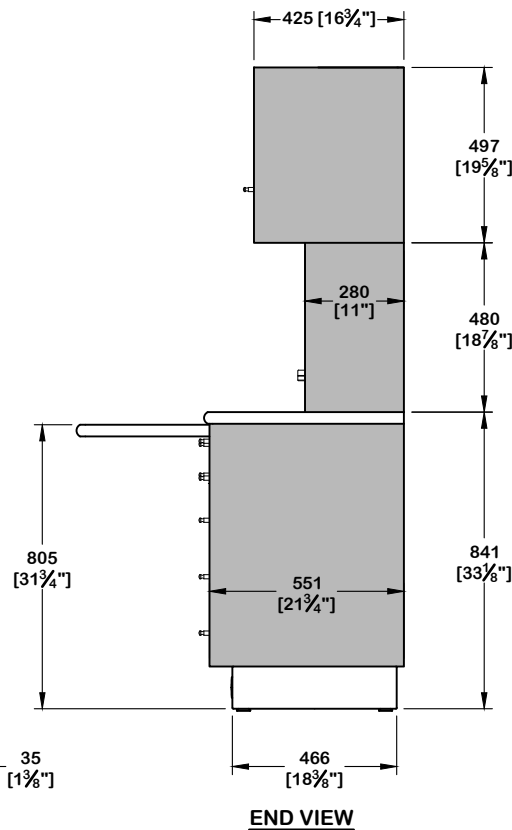
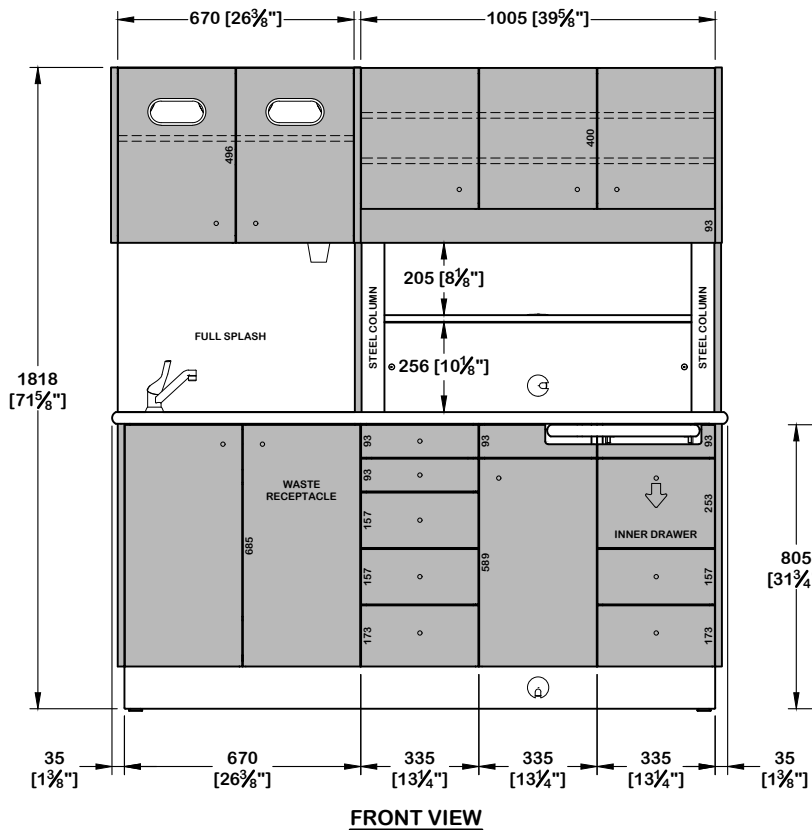


DRAWING DETAIL		DRAWING NAME	
REAR SUPPORT 12 - 23" DEEP AGAINST WALL		<b>RS12-23</b>	
DRAWN BY	DATE	SCALE	VIEW
MLW	05-JUL-18	NTS	AS SHOWN
COPYRIGHT NOTICE			
© Copyright of Bow Wood Dental Systems Inc. All Rights Reserved. No part of this drawing may be reproduced or distributed in any form without prior written permission from Bow Wood Dental			



STANDARD REAR SUPPORT CONFIGURATION. SHOWN WITH WORK SURFACE OPTION 'I' SINGLE PULLOUT. PLEASE SEE RS-OPTION PAGES FOR NUMEROUS WORK SURFACE, HUTCH, AND BASE MODULE CONFIGURATIONS.

● ACCENT COLOR  
○ BASE COLOR



**ISOMETRIC VIEW**

SERIES:  SIGNATURE  MERIDIAN

DEPTH:  19"  23"

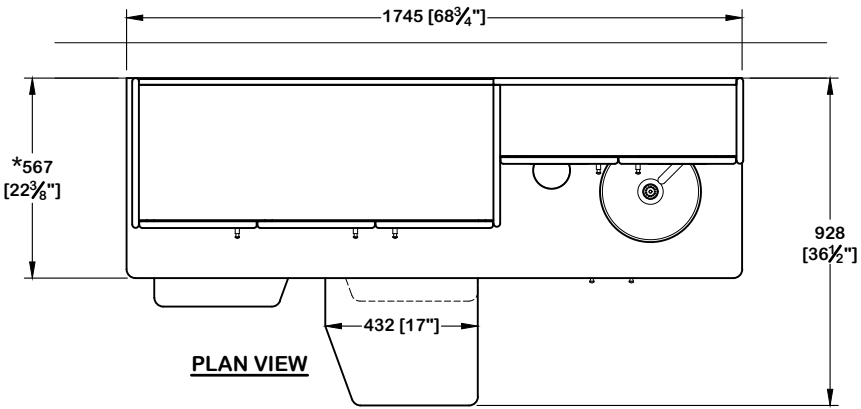
COUNTER:  SOLID SURFACE  LAMINATE  STONE COLOR: \_\_\_\_\_

BASE COLOR: \_\_\_\_\_ ACCENT COLOR: \_\_\_\_\_

FINISHED BACK:  YES  NO COLOR: \_\_\_\_\_  MONOTONE

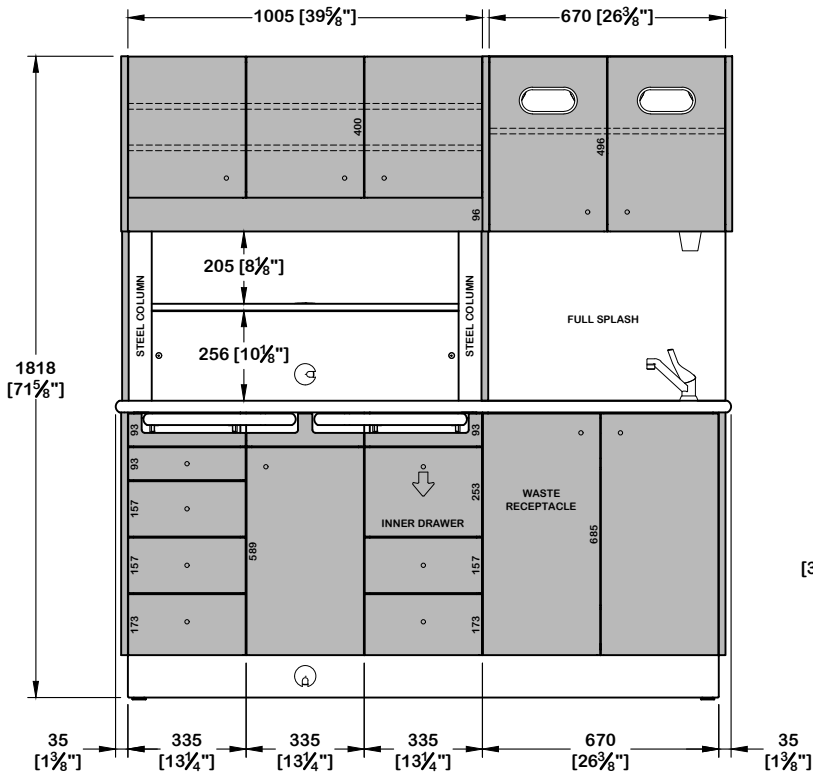


DRAWING DETAIL		DRAWING NAME	
REAR SUPPORT I SINK LEFT 23" DEEP AGAINST WALL		<b>RS1L-23</b>	
DRAWN BY	DATE	SCALE	VIEW
MLW	05-JUL-18	NTS	AS SHOWN
COPYRIGHT NOTICE			
© Copyright of Bow Wood Dental Systems Inc. All Rights Reserved. No part of this drawing may be reproduced or distributed in any form without prior written permission from Bow Wood Dental			



**PLAN VIEW**

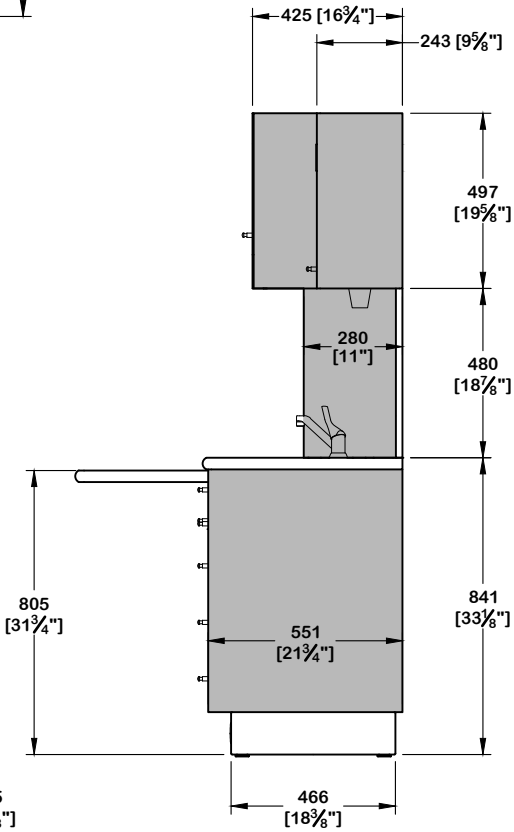
\*ALSO AVAILABLE IN 19" DEPTH



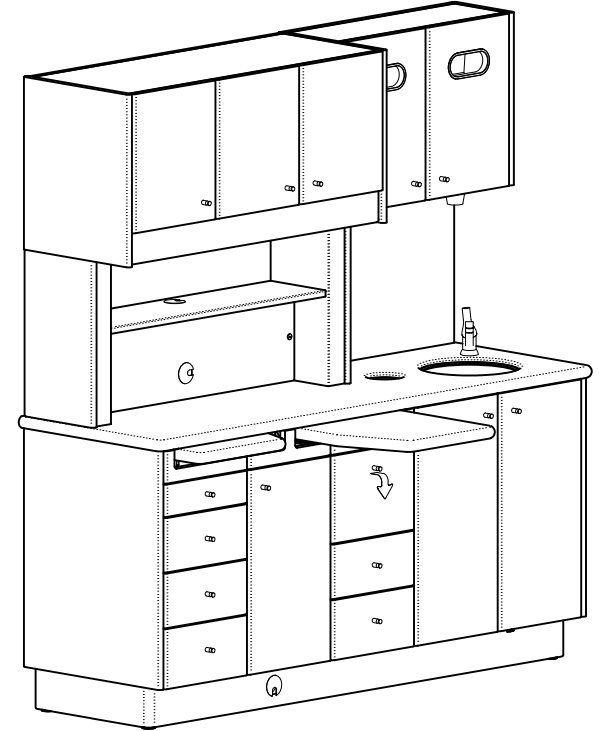
**FRONT VIEW**

STANDARD REAR SUPPORT CONFIGURATION. SHOWN WITH WORK SURFACE OPTION '2' DUAL L/R SLIDING COUNTER. PLEASE SEE RS-OPTION PAGES FOR NUMEROUS WORK SURFACE, HUTCH, AND BASE MODULE CONFIGURATIONS.

- ACCENT COLOR
- BASE COLOR



**END VIEW**

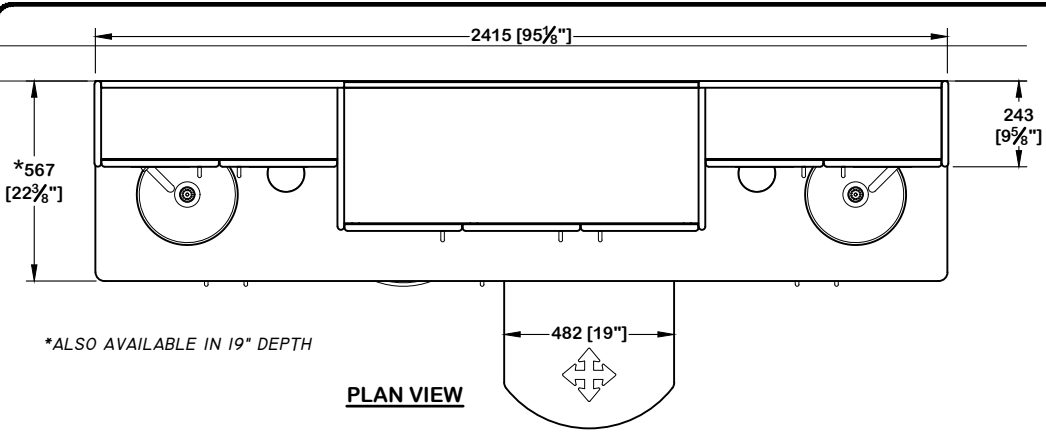


**ISOMETRIC VIEW**

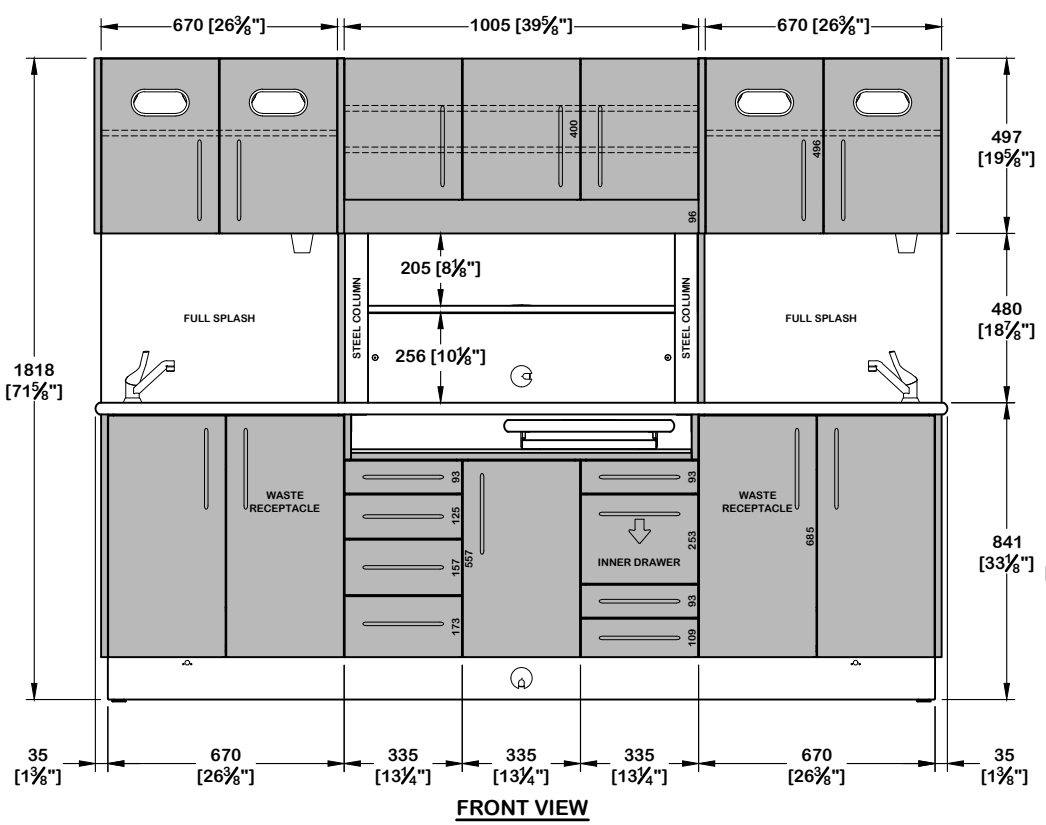
SERIES:     SIGNATURE     MERIDIAN  
 DEPTH:     19"     23"  
 COUNTER:     SOLID SURFACE     LAMINATE     STONE    COLOR: \_\_\_\_\_  
 BASE COLOR: \_\_\_\_\_    ACCENT COLOR: \_\_\_\_\_  
 FINISHED BACK:     YES     NO    COLOR: \_\_\_\_\_     MONOTONE



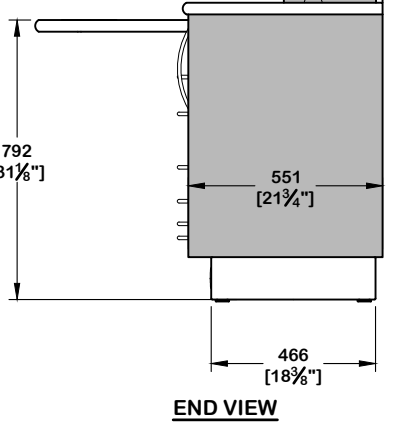
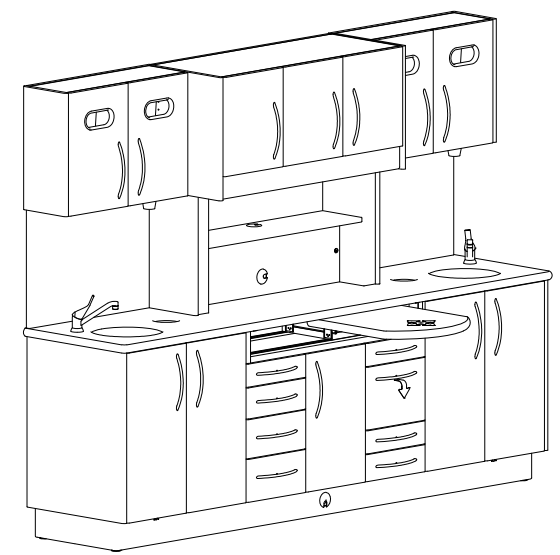
DRAWING DETAIL		DRAWING NAME	
REAR SUPPORT I SINK RIGHT 23" DEEP AGAINST WALL		<b>RS1R-23</b>	
DRAWN BY	DATE	SCALE	VIEW
MLW	05-JUL-18	NTS	AS SHOWN
COPYRIGHT NOTICE			
© Copyright of Bow Wood Dental Systems Inc. All Rights Reserved. No part of this drawing may be reproduced or distributed in any form without prior written permission from Bow Wood Dental			



STANDARD REAR SUPPORT CONFIGURATION. SHOWN WITH WORK SURFACE OPTION '4' LINEAR SLIDING COUNTER. PLEASE SEE RS-OPTION PAGES FOR NUMEROUS WORK SURFACE, HUTCH, AND BASE MODULE CONFIGURATIONS.



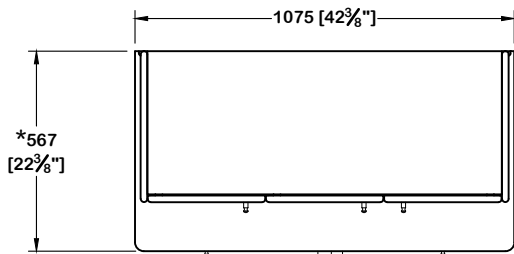
● ACCENT COLOR  
○ BASE COLOR



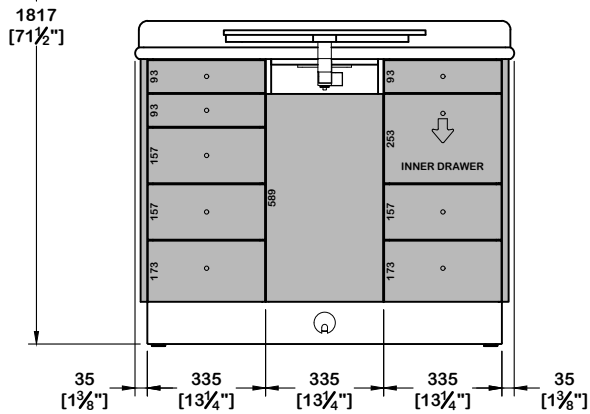
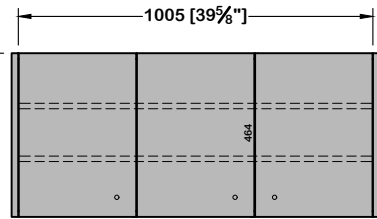
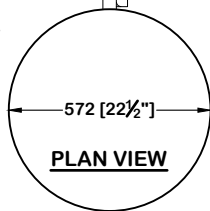
SERIES:  SIGNATURE  MERIDIAN  
 DEPTH:  19"  23"  
 COUNTER:  SOLID SURFACE  LAMINATE  STONE COLOR: \_\_\_\_\_  
 BASE COLOR: \_\_\_\_\_ ACCENT COLOR: \_\_\_\_\_  
 FINISHED BACK:  YES  NO COLOR: \_\_\_\_\_  MONOTONE



DRAWING DETAIL REAR SUPPORT TWO SINKS 23" DEEP AGAINST WALL		DRAWING NAME <b>RS2-23</b>	
DRAWN BY MLW	DATE 05-JUL-18	SCALE NTS	VIEW AS SHOWN
COPYRIGHT NOTICE © Copyright of Bow Wood Dental Systems Inc. All Rights Reserved. No part of this drawing may be reproduced or distributed in any form without prior written permission from Bow Wood Dental			



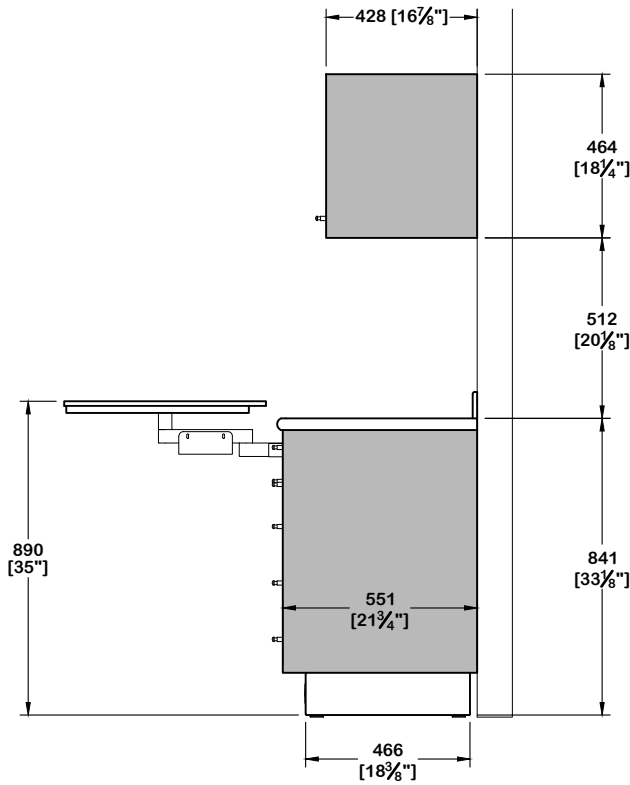
\*ALSO AVAILABLE IN 19" DEPTH



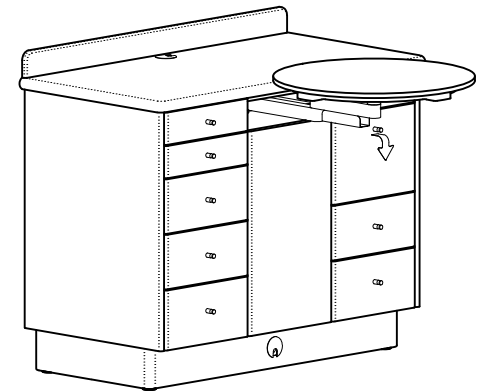
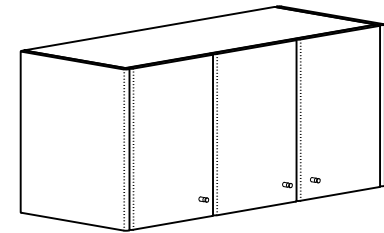
**FRONT VIEW**

STANDARD REAR SUPPORT CONFIGURATION. SHOWN WITH WORK SURFACE OPTION '3' DUO SWING TABLE. PLEASE SEE RS-OPTION PAGES FOR NUMEROUS WORK SURFACE, HUTCH, AND BASE MODULE CONFIGURATIONS.

● ACCENT COLOR  
○ BASE COLOR



**END VIEW**



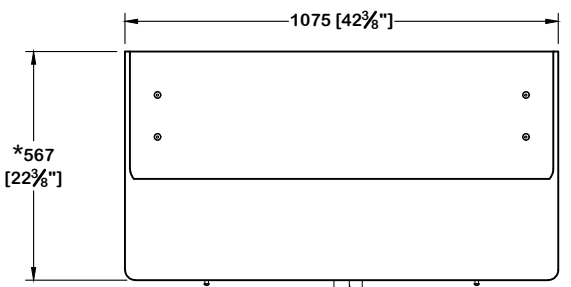
**ISOMETRIC VIEW**

SERIES:     SIGNATURE     MERIDIAN  
 DEPTH:     19"     23"  
 COUNTER:  SOLID SURFACE     LAMINATE     STONE    COLOR: \_\_\_\_\_  
 BASE COLOR: \_\_\_\_\_    ACCENT COLOR: \_\_\_\_\_  
 FINISHED BACK:  YES     NO    COLOR: \_\_\_\_\_     MONOTONE

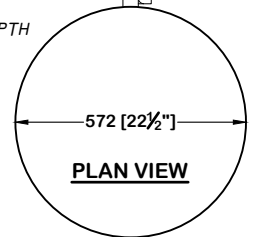


DRAWING DETAIL		DRAWING NAME	
REAR SUPPORT - 23" DEEP WALL HUNG UPPER		<b>RS-23-WHU</b>	
DRAWN BY	DATE	SCALE	VIEW
MLW	05-JUL-18	NTS	AS SHOWN
COPYRIGHT NOTICE			
© Copyright of Bow Wood Dental Systems Inc. All Rights Reserved. No part of this drawing may be reproduced or distributed in any form without prior written permission from Bow Wood Dental			

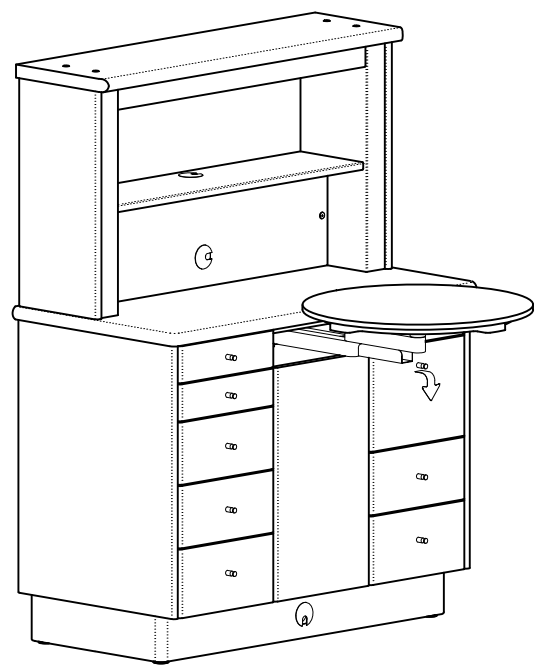
STANDARD REAR SUPPORT CONFIGURATION. SHOWN WITH WORK SURFACE OPTION '3' DUO SWING TABLE. PLEASE SEE RS-OPTION PAGES FOR NUMEROUS WORK SURFACE, HUTCH, AND BASE MODULE CONFIGURATIONS.



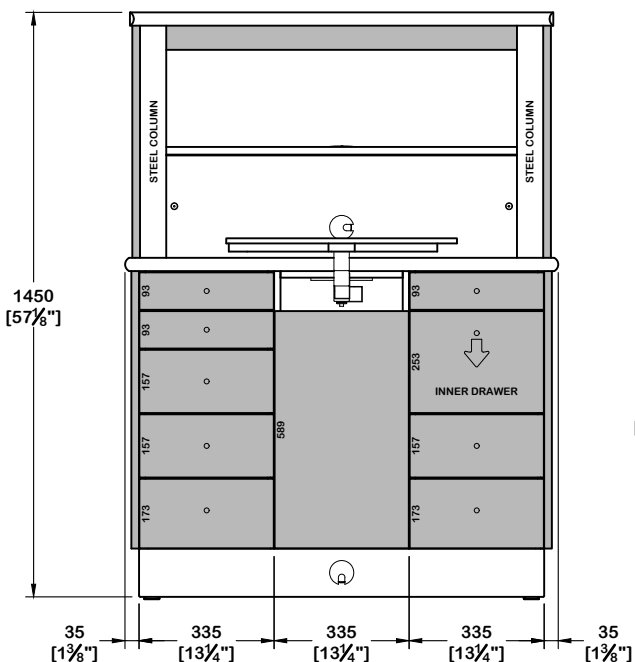
\*ALSO AVAILABLE IN 19" DEPTH



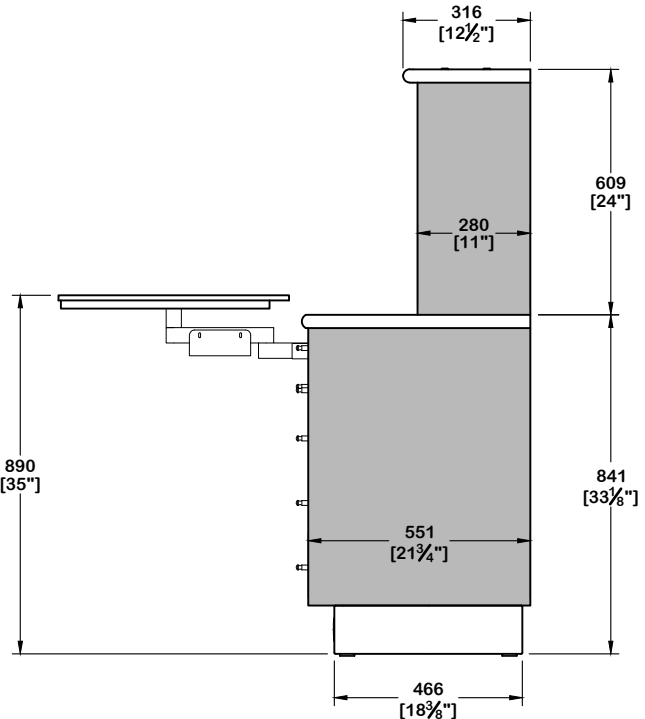
● ACCENT COLOR  
○ BASE COLOR



ISOMETRIC VIEW



FRONT VIEW



END VIEW

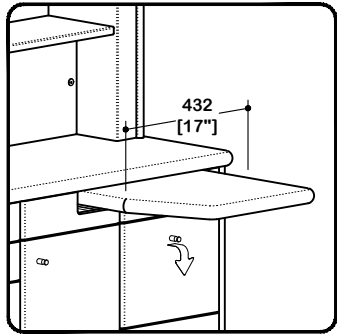
SERIES:  SIGNATURE  MERIDIAN  
 DEPTH:  19"  23"  
 COUNTER:  SOLID SURFACE  LAMINATE  STONE COLOR: \_\_\_\_\_  
 BASE COLOR: \_\_\_\_\_ ACCENT COLOR: \_\_\_\_\_  
 FINISHED BACK:  YES  NO COLOR: \_\_\_\_\_  MONOTONE



DRAWING DETAIL		DRAWING NAME	
REAR SUPPORT - 23" DEEP HUTCH CAP		RS-23-CAP	
DRAWN BY	DATE	SCALE	VIEW
MLW	05-JUL-18	NTS	AS SHOWN
COPYRIGHT NOTICE			
© Copyright of Bow Wood Dental Systems Inc. All Rights Reserved. No part of this drawing may be reproduced or distributed in any form without prior written permission from Bow Wood Dental			

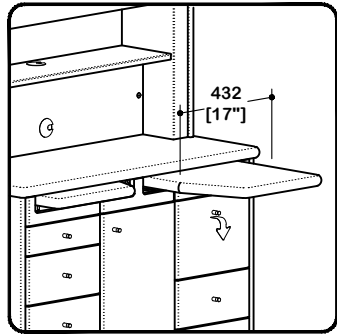


## WORK SURFACE OPTIONS

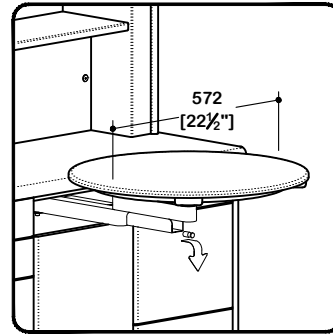


SINGLE PULLOUT

LEFT  RIGHT

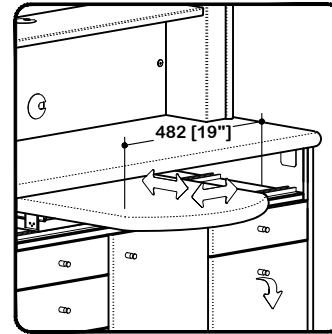


DUAL L/R SLIDING COUNTER

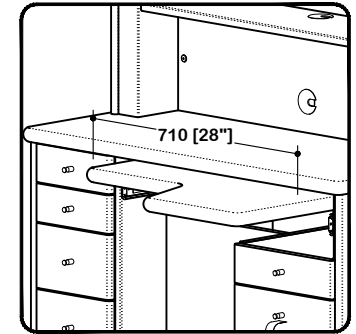


DUO SWING TABLE

ROUND  SQUARE

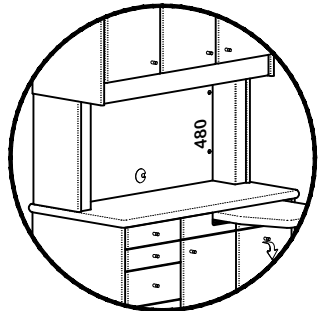


LINEAR SLIDING COUNTER

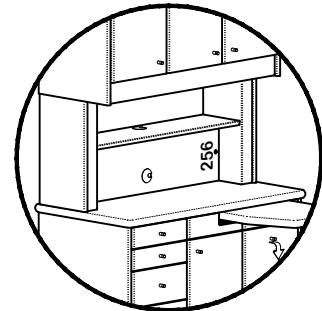


FOREST PULLOUT

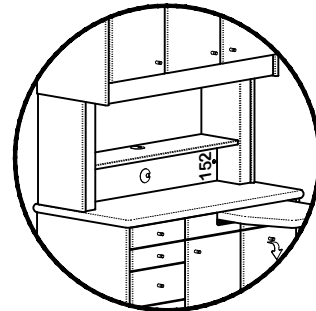
## HUTCH CONFIGURATIONS



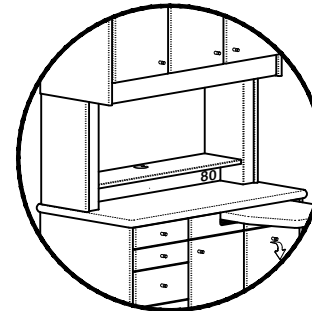
FULL SPLASH



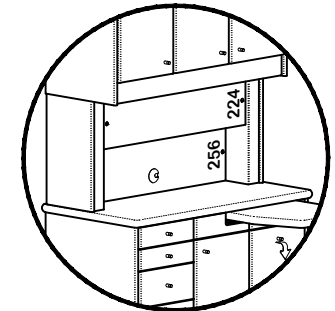
STANDARD SHELF



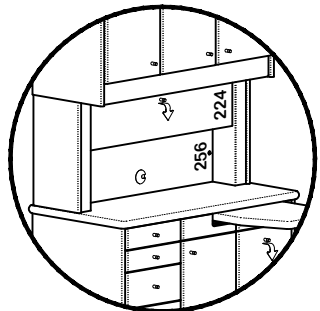
HALF HEIGHT SHELF



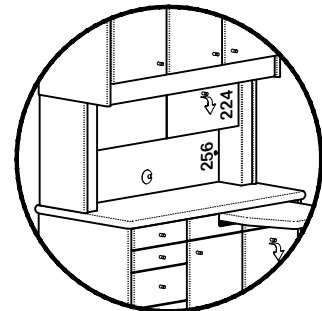
QUARTER HEIGHT SHELF



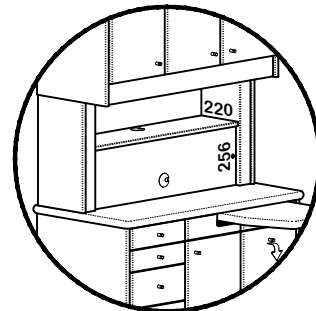
UPPER ACCESSORY PANEL



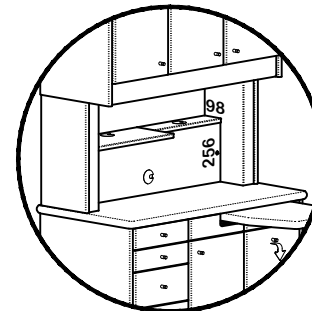
UPPER STORAGE



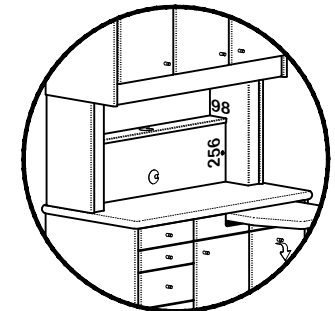
ACCESSORY / STORAGE



BASE ACCESSORY PANEL



SPLIT SHELF



SHALLOW SHELF

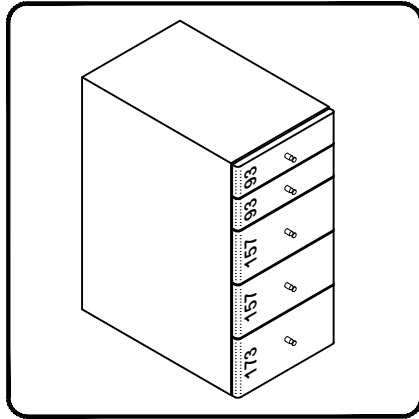
WORK SURFACE OPTION: \_\_\_\_\_  
 BASE MODULES: L: \_\_\_\_\_ C: \_\_\_\_\_ R: \_\_\_\_\_  
 HUTCH CONFIGURATION: \_\_\_\_\_  
 CUSTOM NOTES: \_\_\_\_\_

**Bow Wood**  
 cabinet systems

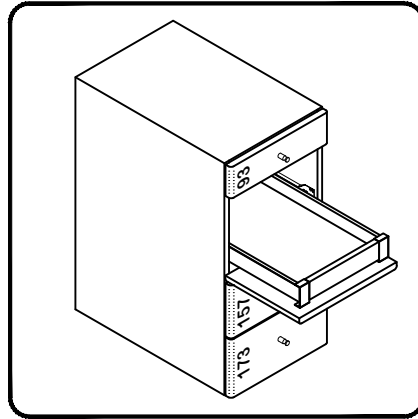
DRAWING DETAIL		DRAWING NAME	
REAR SUPPORT OPTIONS		RS-OPT-PG1	
PAGE 1 OF 2			
DRAWN BY	DATE	SCALE	VIEW
MLW	05-JUL-18	NTS	AS SHOWN
COPYRIGHT NOTICE			
© Copyright of Bow Wood Dental Systems Inc. All Rights Reserved. No part of this drawing may be reproduced or distributed in any form without prior written permission from Bow Wood Dental			

# BASE MODULES

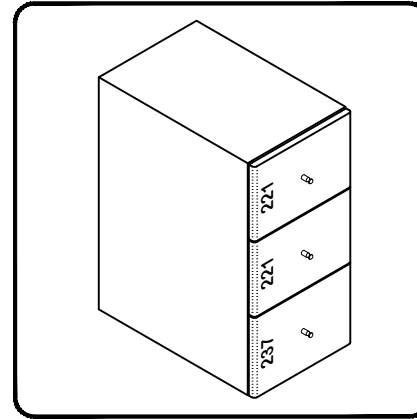
(MOST MODULES CAN BE CONVERTED TO SIDE OPENING)



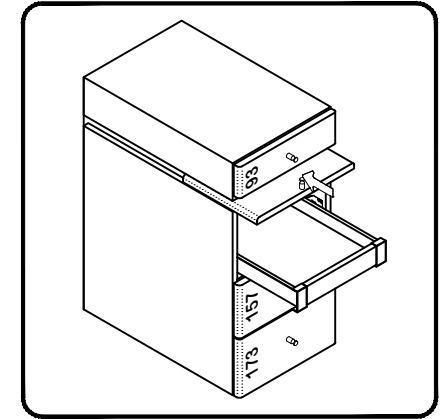
DOCTOR'S



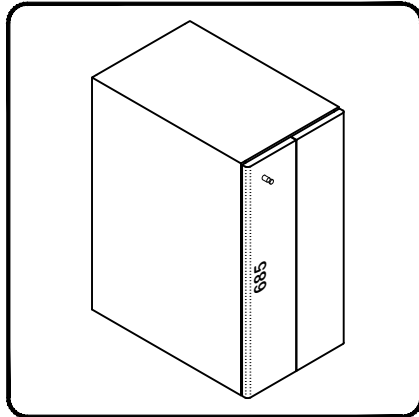
ASSISTANT'S



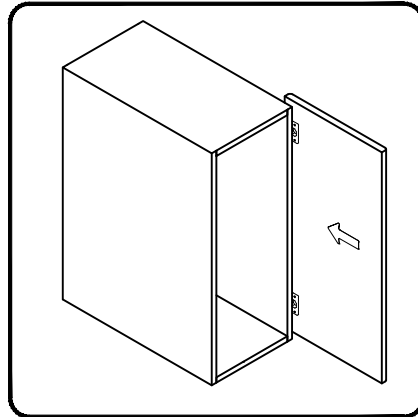
EQUIPMENT



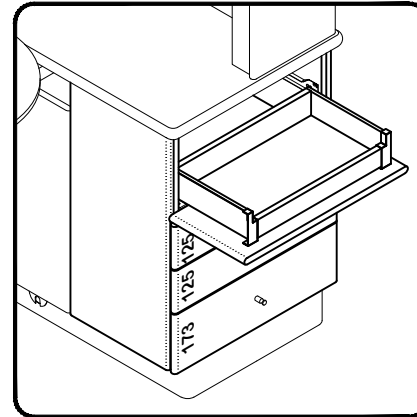
FLIP & PUSH



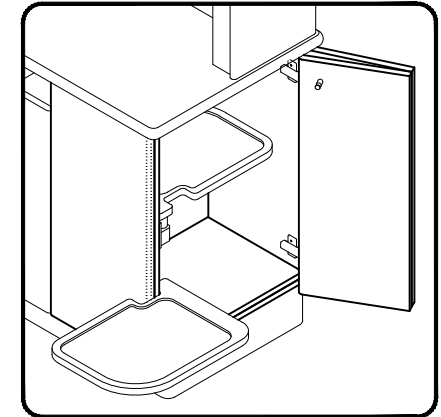
BI-FOLD



POCKET



SIDE OPENING ASSISTANT'S



SIDE OPENING SWING TRAY

WORK SURFACE OPTION: \_\_\_\_\_

BASE MODULES: L: \_\_\_\_\_ C: \_\_\_\_\_ R: \_\_\_\_\_

HUTCH CONFIGURATION: \_\_\_\_\_

CUSTOM NOTES: \_\_\_\_\_



DRAWING DETAIL		DRAWING NAME	
REAR SUPPORT OPTIONS		RS-OPT-PG2	
PAGE 2 OF 2			
DRAWN BY	DATE	SCALE	VIEW
MLW	05-JUL-18	NTS	AS SHOWN
COPYRIGHT NOTICE			
© Copyright of Bow Wood Dental Systems Inc. All Rights Reserved. No part of this drawing may be reproduced or distributed in any form without prior written permission from Bow Wood Dental			