

BowWood
Meridian
Series



BowWood
cabinet systems

Designed to fit. Built to perform.



Welcome to Bow Wood

The company that specializes in designing and crafting beautiful dental cabinetry. That's our focus. So you're free to choose whatever equipment you like and we'll make it fit like a dream. What we're about is making extraordinarily, well-made dental cabinets that help you work better and give your environment an unmistakable sense of class. Our strength is listening to what you want...so you get remarkable cabinetry that makes your surroundings unbelievably beautiful.

Introducing our "Meridian" Collection. A series of cabinets that enables you to create an office that enhances your workflow and complements your staff. Meridian Series provides flexible design options at attractive pricing – all designed to fit and built to perform.

Bow Wood Meridian Series

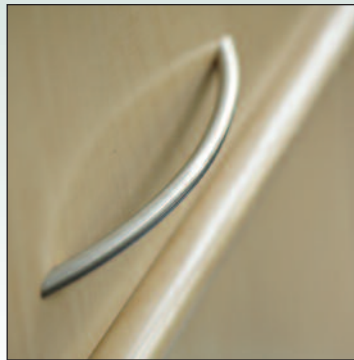
TWO YEAR WARRANTY

We believe in what we build so much that we put our warranty where our mouth is. Our two-year warranty is industry leading. It's also seldom used, because our cabinetry is so well built in the first place.



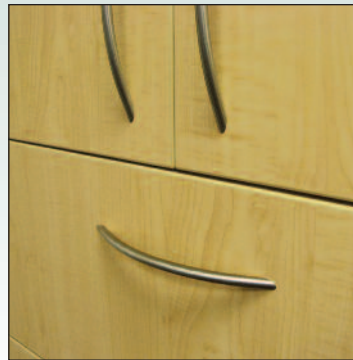
MADE TO BE FLEXIBLE

Do you want a different drawer bank location? A different place for the sink? Our designs are about giving you designs that are effective for you and your workflow.



DURABLE EDGING

We use 3mm edging on our Meridian Series panels, doors and drawer fronts. Results in increased durability, reduced chipping and a smart clean look!



EUROPEAN HARDWARE

We go the extra mile — right down to the hinges. We use the best hinges Europe can make. They allow for greater adjustability in all directions. Because it's all about the finishing details.



GLASS WINDOW TREATMENT

Choose our seamlessly designed windows on the front, back or both. Designed with elegant detail, each window is handcrafted for a smooth, clean look and fine borders.



STAINLESS STEEL SINKS

Bow Wood uses stainless steel basins so they always look shiny; instruments don't scratch; and stains don't show. Undermounted so water doesn't collect. Durable foot-activated faucets available.



STRUCTURAL BASE

Our kick base is made of 1" thick plywood faced with laminate. Immensely strong and water resistant, it incorporates our heavy-duty levelling feet, with no need for plastic legs or shims.



SOLID SURFACE OPTION

There's nothing like the real thing. Solid surfacing gives your countertops one of the best surfaces out there. Hygienic and safe. Smart with a very contemporary look.



DUO SWING TABLE

Did you know that 30% of dentists are left-handed? That's why our swing table can accommodate ambidextrous delivery systems for the dentist and the assistant. Now that's handy.



SIDE SWING TRAYS

Versatility. That's the word of the day. Our swing trays significantly increase storage surface for ancillary equipment, such as curing lights, so they're easily within reach.



CHOICES

Our staff is familiar with many different manufacturer's brands — their controls and accessories — and how they can integrate into our products. As you make your choices, use our expertise.

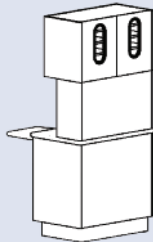
PULLOUT SURFACE

Strong. Stable. Versatile. Those are just three words to describe our pull-out work surface. Push it in. It disappears. Pull it out and your assistant has an extra work area that locks. Ask for our dual pull out option.

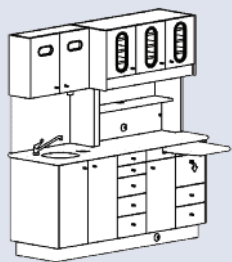
Optional Design Configurations



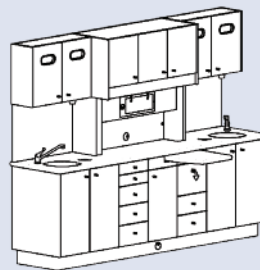
RS 42" WITH
DUO SWING TABLE



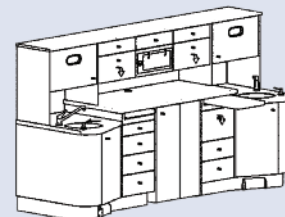
RS12, 34" WITH
FINISHED BACK



RS1, 69" WITH
SINK, LEFT



RS2, 95" WITH
TWO SINKS



P&C EXEC.
REPLACEMENT

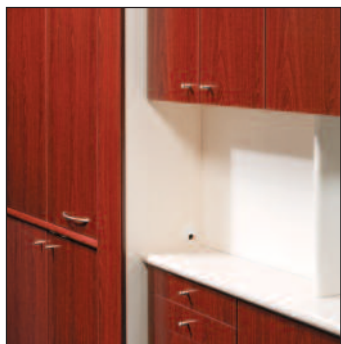
STEEL COLUMNS

Strength matters. Especially when a steel column is holding up your expensive x-ray. We use the strongest column in the industry so our cabinetry doesn't flex and x-rays don't drift.



LIGHT CHOICES

Our steel columns are compatible with operating lights from any manufacturer. Plus, our ladder-frame construction means easy access for equipment installation and servicing.



X-RAY ENCLOSURE

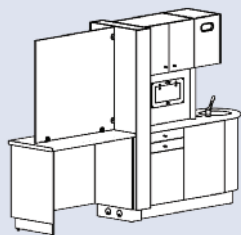
Conceal the x-ray machine and have ops private at the same time. The back end of our centre island can include the necessary cabinetry to do both. A popular choice.

STORAGE OPTIONS

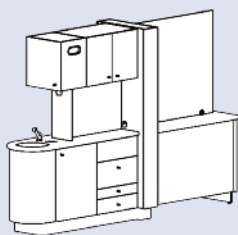
The island rear section can be specified as a storage area configured to your needs. A capacious solution to an ongoing problem.



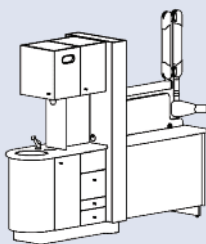
Optional Design Configurations



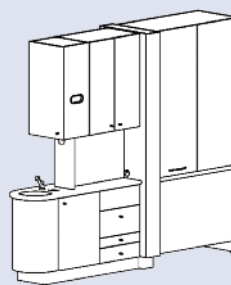
CIR, 106" SHOWN
DOCTOR'S SIDE



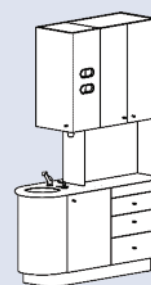
CIR, 106" SHOWN
ASSISTANT'S SIDE



CIR, 90" SHOWN
WITH X-RAY



CIR, 88" TALL X-RAY
ENCLOSURE



CIR, 1/2 ISLAND
88" TALL

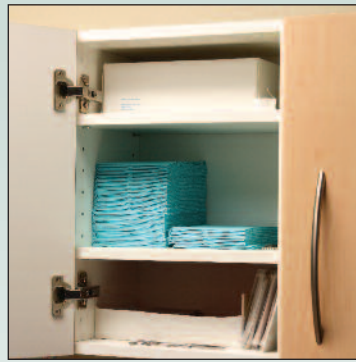
Designed to fit. Built to perform.

Side Cabinets



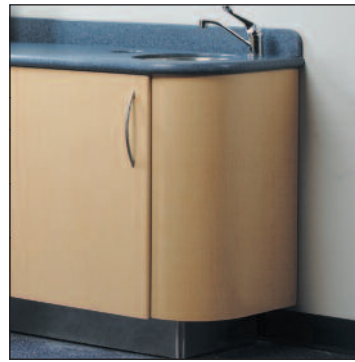
DRAWER BOX CONSTRUCTION

We make our drawers using metal sides. They last longer. Sturdy is very important to us, and our clients appreciate it as well. Drawer banks are also reconfigurable.



UPPER STORAGE

Storage is paramount in an office, so our upper cabinets give you as much room as possible, while remaining space-savily smart.



ROUND END

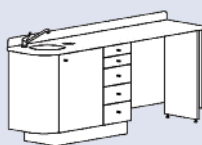
We round our end corner to give you more room to get in and out of your operatory and more wheelchair accessibility. Plus, if we do say so ourselves, it looks really smart.



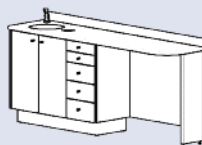
GLOVE/CUP DISPENSERS

Our upper storage can come with time-saving glove and cup dispensers so you never have to open a door to get what you need and risk contamination.

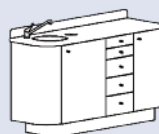
Optional Design Configurations



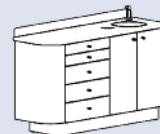
DRSL



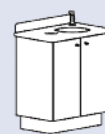
DRSR



ASTL



ASTL-T



WS

SOAK DRAWERS

Opt to soak in a drawer, instead of on the counter. Our soak drawers are designed for cold sterilization and easy clean out. Add an extra High Volume Evacuator (HVE) for even snappier and mess-free draining.



BLUE OR RED LIGHTS

Our Sterilization Centres can also be outfitted with blue and red lights for increased patient awareness of the aseptic process. So, give us the green light to put blue and red lights in for you.



SOLID SURFACE PULLOUTS

Solidly waterproof. Our grooved solid surface tower pullouts make sure any moisture that drips down during sterilization stays exactly where it's supposed to. Because containment is where it's at.

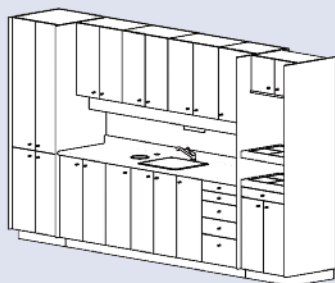


MAXIMUM TRAY STORAGE

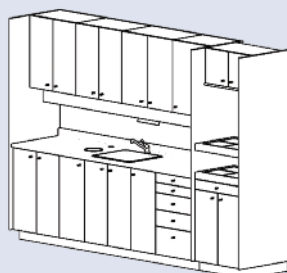
We designed wire racks so they give you the maximum amount of storage space possible. They're chrome, long-lasting...and they're adjustable.



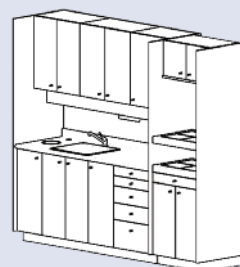
Optional Design Configurations



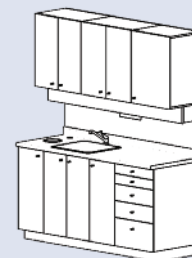
SC12



SC10



SC8

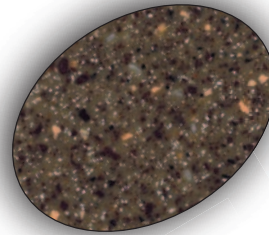


SC6

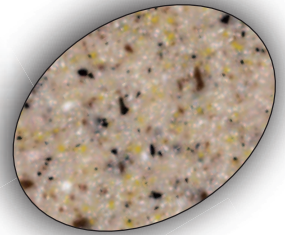
Designed to fit. Built to perform.

Storage and Office

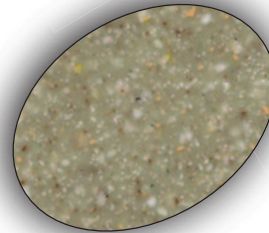
Storage options as you dreamed
it should be!



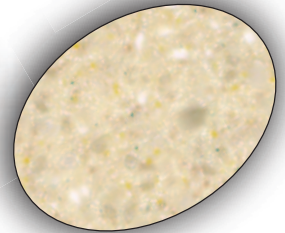
Allspice Quartz



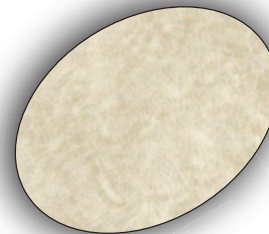
Aztec Quartz



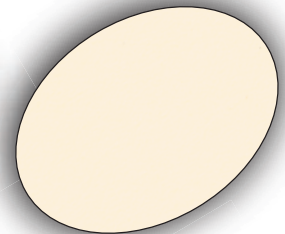
Foliage Quartz



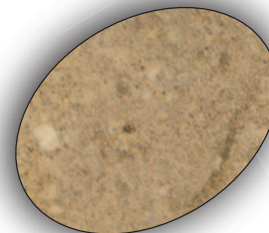
Moonscape Quartz



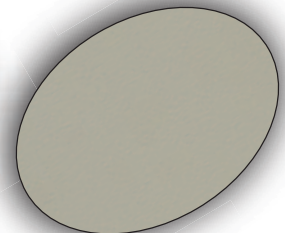
Almond Leather



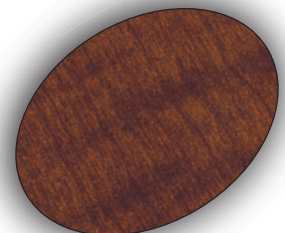
Antique White



Gridlock in LA

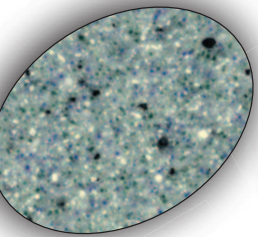


Pepperdust

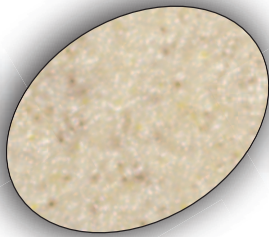


*Sipping Seattle
Java*

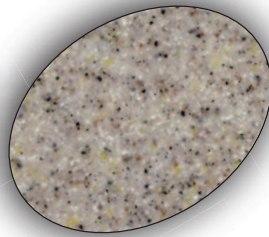
Solid Surface Partial Colour Palette



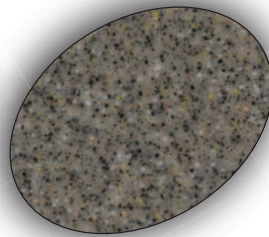
Azure Quartz



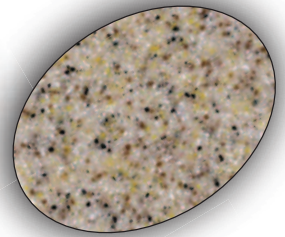
Beach Sand



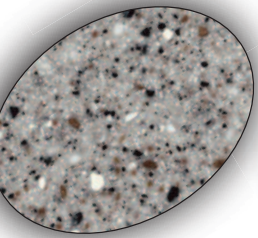
Beige Sand



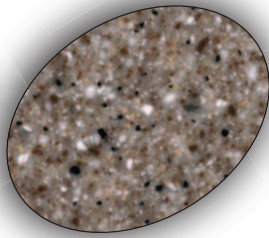
Delta Sand



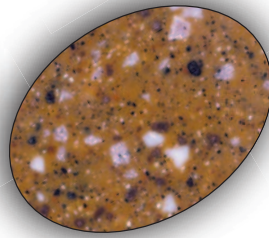
Desert Sand



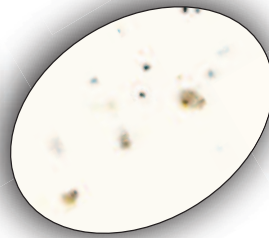
Platinum Granite



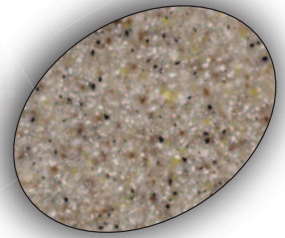
Rose Quartz



Sienna Quartz



Tundra Quartz

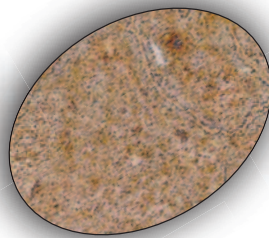


Venetian Sand

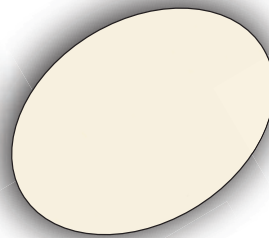
Laminate Partial Colour Palette



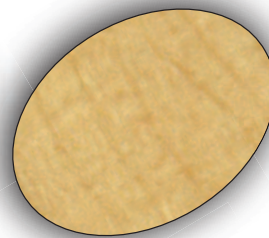
Concrete Stone



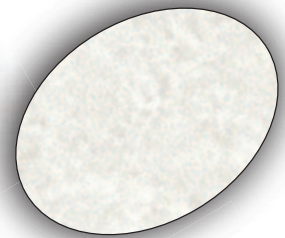
Cotta Stone



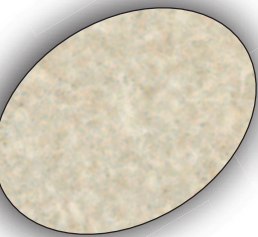
Frosty White



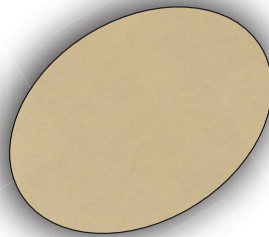
Fusion Maple



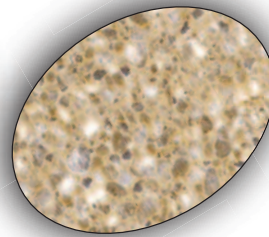
Gray Pampas



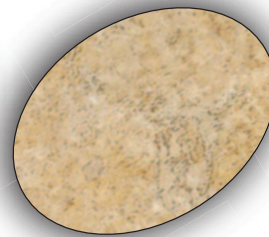
Prairie Terra



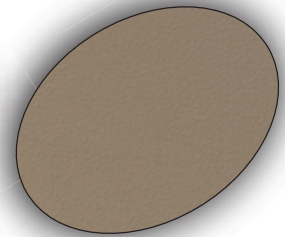
Pumice



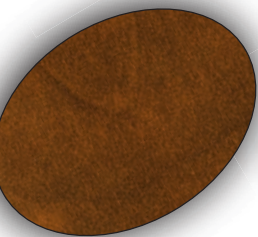
Sand Crystal



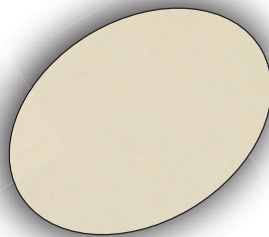
Sandstone



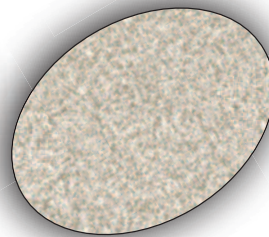
Shadow



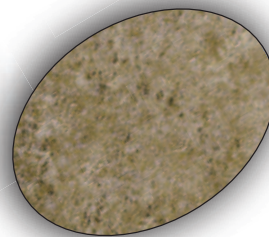
Sunset



Surf



White Nebula

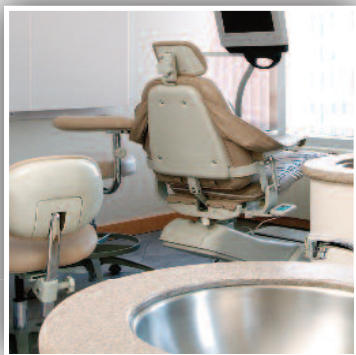


Willowstone

Bow Wood
Meridian
Series



*Meridian Reception Desks...
Beautiful, Smart and Functional,
Yours for the asking.*



Industry-Leading Two-Year Warranty

To us, excellent service is crafting the best cabinetry out there so you never have to call us; however, if you do need help, we go the extra mile to take care of you. That's why we have an industry-leading two-year warranty. We believe that strongly in our cabinetry. And we invite you to as well.



Care through to completion...

Our products are custom packed and crated to ensure safe delivery to you. Our care continues even then with our industry leading warranty for your peace of mind.

Bow Wood
cabinet systems

Bow Wood Inc.

410 Railway Avenue, Oxbow, SK, S0C 2B0

Tel: 1-888-269-9663 • Fax: 1-306-483-2102

E-mail: design@bowwood.net • Website: www.bowwood.net

Designed to fit. Built to perform.