



Red Hot Split Case Pump Models
3"1824F
4"1823DF
5"1822CF
5"1823F
6"1823CF
6"1824BF
6"1825F
8"1824BF

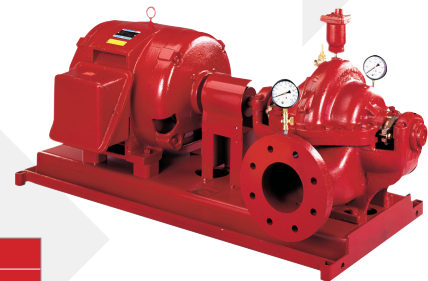
Horizontal Split Case Fire Pump Packages

Red Hot horizontal split case pump packages are available in either electric or diesel format. The fire pump package includes:

- UL-Listed/FM-Approved bronze fitted fire pump on steel base
- #125 or #250 suction and discharge flanges
- Factory choice coupling and coupling guard
- Air release valve
- Suction and discharge gauges
- Certified performance test

Electric Motors Available for Quick Ship

- All motors are listed for fire pump service
- All motors are 3-phase, ODP enclosure and suitable for Wye-Delta start
- Refer to factory for availability of other motor sizes or types



60 Hz Motors

3600 RPM		
Part Number	Volts	HP
920-5691-80E-V	230/460	25
920-6091-80E-V	230/460	30
920-6491-80E-V	230/460	40
920-6891-80E-V	230/460	50
920-7291-80E-V	230/460	60
920-7691-80E-V	230/460	75
920-8091-80E-V	230/460	100
920-8495-80E-V	460	125
920-8895-80E-V	460	150

1800 RPM		
Part Number	Volts	HP
922-6491-80E-V	230/460	40
922-6891-80E-V	230/460	50
922-7291-80E-V	230/460	60
922-7691-80E-V	230/460	75
922-8091-80E-V	230/460	100
922-8495-80E-V	460	125
922-8895-80E-V	460	150
922-9295-80E-V	460	200

50 Hz Motors

3000 RPM		
Part Number	Volts	HP
921-6499-802-A	380	40
921-6899-802-A	380	50
921-7299-802-A	380	60
921-7699-802-A	380	75
921-8099-802-A	380	100
921-8499-802-A	380	125

Diesel Engines Available for Quick Ship

Diesel Red Hot Fire Pump packages are available with horizontal split case pumps that are in the Red Hot program. Diesel engines are subject to availability and delivery from the manufacturer and require a quoted leadtime through North Aurora Customer Service prior to Red Hot order submittal.



Inline Fire Pump Packages

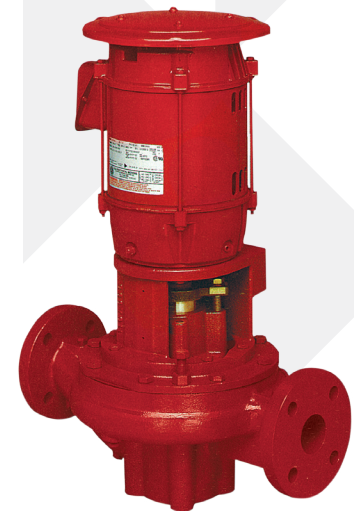
Red Hot Inline Pump packages include:

- UL-Listed/FM-Approved bronze fitted fire pump
- #125 suction and discharge flanges
- Suction discharge gauges
- Certified performance test

JP Motors

- All motors are ODP

Inline Fire Pump Models	
2"	1591CF
3"	1591AF
3"	1591BF
3"	1593F
3"	1592AF
4"	1591BF
4"	1592F
4"	1593BF



3-Phase Motors

Part Number	60 Hz 3500 RPM	
	Volts	HP
980-4491-902-V	230/460	10
980-4891-902-V	230/460	15
980-5291-902-V	230/460	20
980-5691-902-V	230/460	25
980-6091-902-V	230/460	30
980-6491-902-V	230/460	40
980-6891-902-V	230/460	50

Part Number	50 Hz 3000 RPM	
	Volts	HP
981-4499-902-V	380	10
981-4899-902-V	380	15
981-5299-902-V	380	20
981-5699-902-V	380	25
981-6099-902-V	380	30

Fire Pump Controllers

Fire Pump Controllers are available with standard NEMA 2 enclosure at 60 Hz Across-the-Line start; limited service for controllers 7.5 and 10 hp; or 50 Hz Wye-Delta Open start. Controllers for diesel fire pump packages are also available in NEMA 2 enclosure with standard options. Note that some manufacturers charge an expediting fee for any controller shipped in less than 2 or 3 weeks. Please consult North Aurora Customer Service to verify that your selected manufacturer is available without extra charge. Any controllers other than those described above, such as controllers with different enclosure types, reduced voltages or transfer switches, require a quoted leadtime from North Aurora Customer Service prior to Red Hot order submittal.



Jockey Pumps

PVM Jockey Pumps and Motors

PVM Model	60 Hz TEFC NEMA Premium Motor 3Ph/ 230/460V		50 Hz TEFC NEMA Premium Motor 3Ph/ 190/380V	
	Motor HP	Part No.	Motor HP	Part No.
PVM1-6	0.75	9301891905	0.50	9301891905
PVM1-7	0.75	9301891905	0.50	9301891905
PVM1-8	1.00	9302291905	0.75	9302291905
PVM1-10	1.50	9302691905	1.00	9302691905
PVM1-11	1.50	9302691905	1.00	9302691905
PVM1-12	1.50	9302691905	1.00	9302691905
PVM1-15	2.00	9303091905	1.50	9303091905
PVM3-5	1.00	9302291905	0.75	9302291905
PVM3-6	1.00	9302291905	0.75	9302291905
PVM3-7	1.50	9302691905	1.00	9302691905
PVM3-9	1.50	9302691905	1.00	9302691905
PVM3-10	2.00	9303091905	1.50	9303091905
PVM3-11	2.00	9303091905	1.50	9303091905
PVM5-8	3.00	9303491905	2.00	9303491905
PVM5-9	3.00	9303491905	2.00	9303491905
PVM5-10	5.00	9303891905	3.00	9303891905
PVM5-12	5.00	9303891905	3.00	9303891905
PVM5-13	5.00	9303891905	3.00	9303891905
PVM10-4	3.00	9303491905	2.00	9303491905
PVM10-8	7.50	9304291905	5.00	9304291905

RED HOT PVM JOCKEY PUMPS
Vertical Multistage (PVM) Jockey Pumps are available in a variety of sizes. Red Hot PVM pumps are cast iron, flanged and include a 60/50 Hz, 3-phase, TEFC NEMA Premium Motor.



Regenerative Turbine Jockey Pumps and Motors

Pump Models	Pump Models
G03	G05
E03	H05
F03	I05
D04	F05

Motors

- .75 to 3 hp
- 60 Hz
- 1750/3500 rpm
- Factory Choice

Jockey Pump Control Panels

Jockey pump control panels are available up to 7.5 hp in 3-phase only.

Accessories

Select fire pump accessories available in the Red Hot Program include:

- Cast iron hose valve manifold
- Bronze hose valves
- Caps and chains



800 AIRPORT ROAD, NORTH AURORA, IL 60542 USA www.FairbanksNijhuis.com
PH: 630-859-7000

Because we are continuously improving our products and services, Pentair reserves the right to change specifications without prior notice.