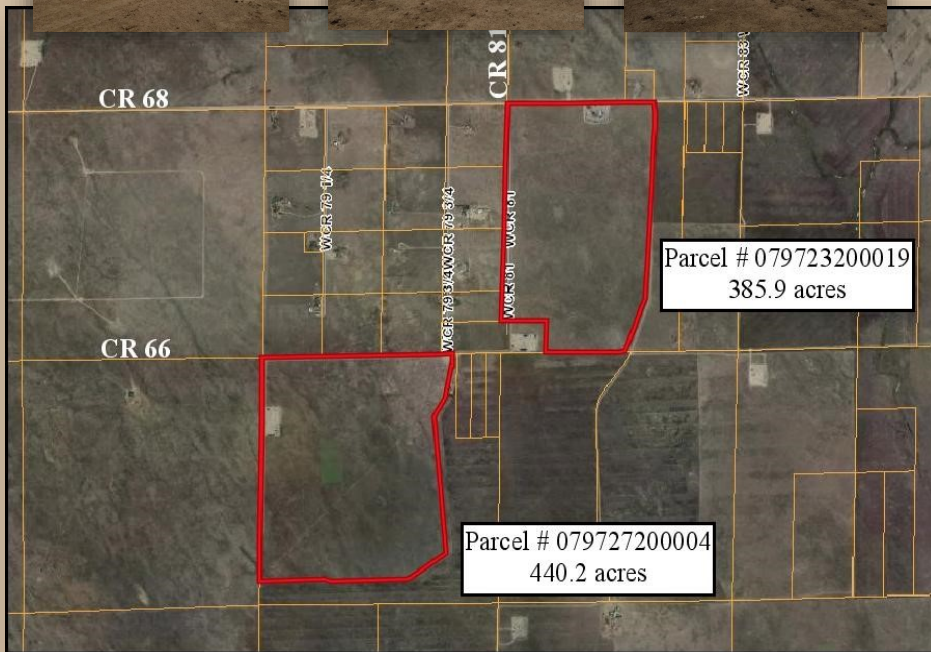


AGPROfessionals

DEVELOPERS OF AGRICULTURE



Native Grass

Hwy 392 & CR 81

Barnesville, CO

\$750,000

- 826 acres m/l
- 3 stock wells (1 needing repair)
- Taxes: \$617/2016
- Seller to retain all future Bronco station payments
- 826.1 acres m/l, situated in Sections 23 & 27, Township 6N, Range 62 West
- From Hwy 85 and Hwy 392 (CR 68) east from approx. 21 miles to CR 81



**RYAN
HOSTETLER**
ACCREDITED LAND CONSULTANT

AGPROS.COM

3050 67th Avenue, Greeley, CO

720.684.4111 Ryan@Agpros.com