

CRP for Sale

4 Tracts



Property Overview: 4 Parcels

Parcel 1
(\$60,000)

45.76 Acres close to HWY 85. Enrolled in CRP through 2020 with annual payment of \$1,485. Oil, gas and other minerals excluded.

Parcel 2
(\$110,838)

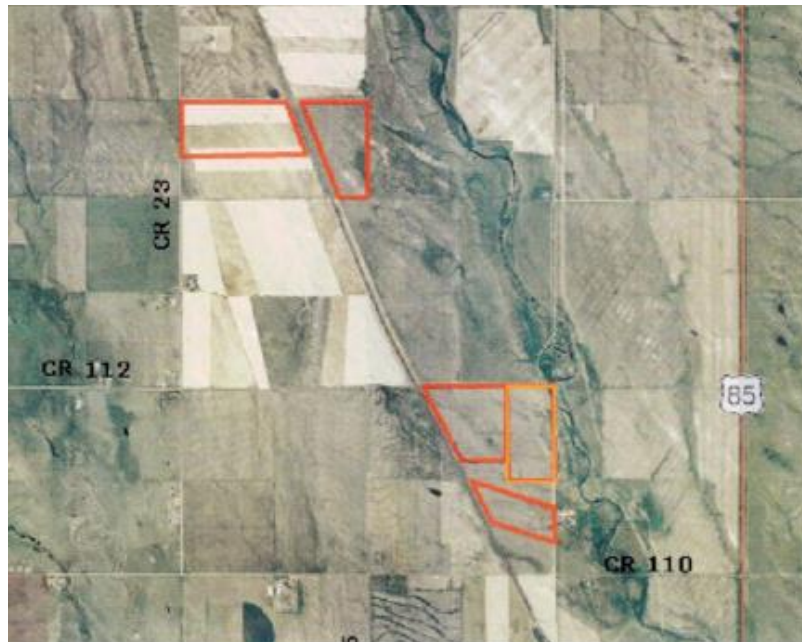
85.27 Acres +/- enrolled in CRP through 2020 with annual payment of \$2,774. Oil, gas and other minerals excluded.

Parcel 3
(\$116,207)

89.39 Acres could be developed for a home site. Enrolled in CRP through 2020 at \$35.91/CRP acres. CRP acres are not separated yet, but the annual payment should be +/- \$3,000-\$3,200 annually. Oil, gas and other minerals excluded.

Parcel 4
(\$114,161)

113.97 Acres farm. Enrolled in CRP through 2020 with annual payment +/- \$2,200. There is a tenant on the CRP contract who also receives +/- \$2,200. Oil, gas and other minerals excluded.



Presented by:

RYAN HOSTETLER, ALC
Accredited Land
Consultant

3050 67th Avenue, Ste.
200
Greeley, CO 80634

720.684.4111 direct
303.883.7080 cell
ryan@agpros.com

NOTICE TO PROSPECTIVE PURCHASERS: The information contained herein has either been given to us by the owner or obtained from sources we deem reliable. We have no reason to doubt its accuracy; however, we do not guarantee it. AGPROfessionals, LLC, and the seller assume no responsibility for the omissions, corrections, withdrawals, or prior sales. The prospective purchaser should verify all information contained herein. AGPROfessionals, LLC, and all other agents of the broker are or will be acting in the capacity of a Transaction Broker in the sale of subject property.