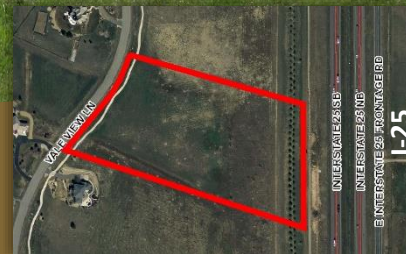
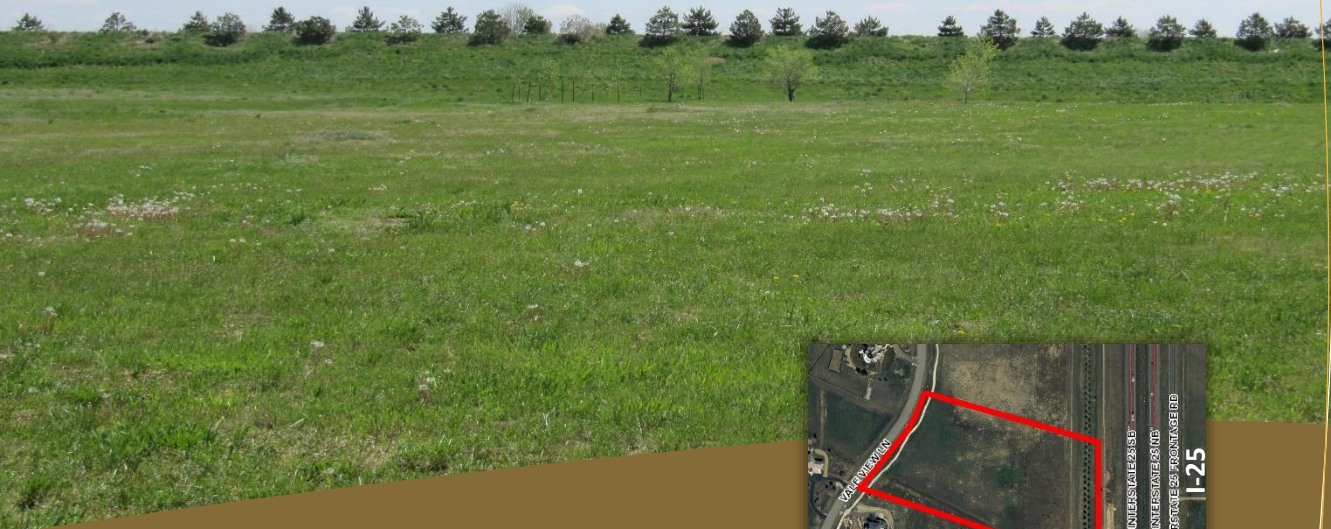


**AGPRO**professionals  
DEVELOPERS OF AGRICULTURE

# Residential Lot

3928 Vale View Lane, Mead, CO

**\$285,000**



## Property Overview

<b>Property</b>	+/- 7.76 acres located in Vale View Subdivision. This property offers easy access to Denver International Airport and Downtown Denver via Interstate 25. From I-25 take County Road 34 West for 1 mile to WCR 7 North. Take WCR 7 North to WCR 36. Take WCR 36 East to North on Vale View Lane. Signs will be posted.
<b>Location</b>	Located in Mea Vale L15 Vale View (Belmont Park Annex) of Section 3 of Township 3 North, Range 68 West.
<b>Taxes</b>	2015 = \$4,237.78
<b>Additional</b>	Come enjoy the spectacular views from this one of a kind property. Located just north of Mead, this unique property allows for 4 horses and has irrigation water to irrigate the land for grazing! Being one of the larger lots in the development and on the east side, your western views will be unobstructed. On a clear day, you can see Pikes Peak. Schedule a showing today to come enjoy this property. HOA is \$1,700 a year.



*Presented by:*

**RYAN HOSTETLER, ALC**  
Accredited Land Consultant

3050 67<sup>th</sup> Avenue, Ste. 200  
Greeley, CO 80634

720.684.4111 direct  
303.883.7080 cell  
ryan@agpros.com

**NOTICE TO PROSPECTIVE PURCHASERS:** The information contained herein has either been given to us by the owner or obtained from sources we deem reliable. We have no reason to doubt its accuracy; however, we do not guarantee it. AGPROfessionals, LLC, and the seller assume no responsibility for the omissions, corrections, withdrawals, or prior sales. The prospective purchaser should verify all information contained herein. AGPROfessionals, LLC, and all other agents of the broker are or will be acting in the capacity of a Transaction Broker in the sale of subject property.